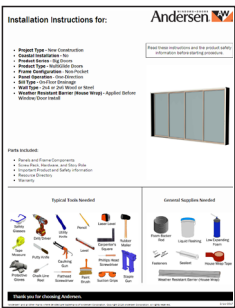


Site Preparation Information for:



- **Product Series** - Big Doors
- **Product Type** - Folding Outswing Door

For: Folding Outswing Door Installation Instructions



Go To -
**[andersenwindows.com/
installation](https://andersenwindows.com/installation)**

or



Scan -

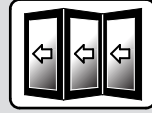


Table of Contents

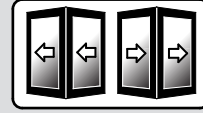
Folding Outswing Door Installation Site Specifications

Installation Site Specifications

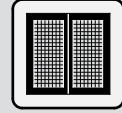
One-Direction Panel Operation
Two-Direction Panel Operation
with or without Retractable Insect Screen ... 4-9



FOLDING DOOR
ONE-DIRECTION



FOLDING DOOR
TWO-DIRECTION



RETRACTABLE
SCREEN

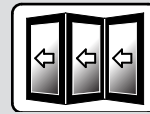


NO RETRACTABLE
SCREEN

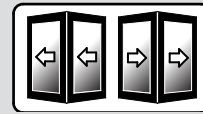
Folding Outswing Door Vertical Details

Vertical Details

One-Direction Panel Operation
Two-Direction Panel Operation
without Retractable Insect Screen 10-13



FOLDING DOOR
ONE-DIRECTION



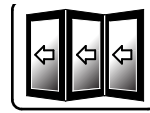
FOLDING DOOR
TWO-DIRECTION



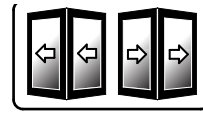
NO RETRACTABLE
SCREEN

Vertical Details

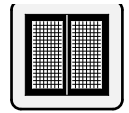
One-Direction Panel Operation
Two-Direction Panel Operation
with Retractable Insect Screen 14-17



FOLDING DOOR
ONE-DIRECTION



FOLDING DOOR
TWO-DIRECTION



RETRACTABLE
SCREEN

Folding Outswing Door Horizontal Details/Typical Rough Framing

Horizontal Details/Typical Rough Framing

One-Direction Panel Operation
without Retractable Insect Screen 18-19



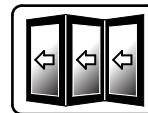
FOLDING DOOR
ONE-DIRECTION



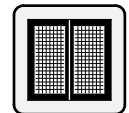
NO RETRACTABLE
SCREEN

Horizontal Details/Typical Rough Framing

One-Direction Panel Operation
with Retractable Insect Screen 20-21



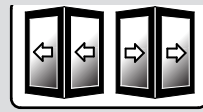
FOLDING DOOR
ONE-DIRECTION



RETRACTABLE
SCREEN

Horizontal Details/Typical Rough Framing

Two-Direction Panel Operation
without Retractable Insect Screen 22-25



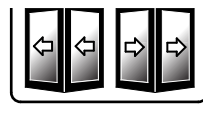
FOLDING DOOR
TWO-DIRECTION



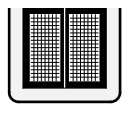
NO RETRACTABLE
SCREEN

Horizontal Details/Typical Rough Framing

Two-Direction Panel Operation
with Retractable Insect Screen 26-32



FOLDING DOOR
TWO-DIRECTION

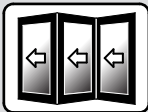


RETRACTABLE
SCREEN

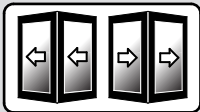
Folding Outswing Door Interior Trim Options

Interior Trim Options

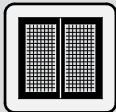
One-Direction Panel Operation
Two-Direction Panel Operation
with Retractable Insect Screen **33-34**



FOLDING DOOR
ONE-DIRECTION



FOLDING DOOR
TWO-DIRECTION



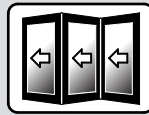
RETRACTABLE
SCREEN

Installation Site Specifications

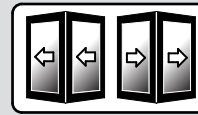
One-Direction Panel Operation

Two-Direction Panel Operation

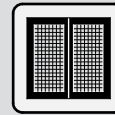
with or without Retractable Insect Screen



FOLDING DOOR
ONE-DIRECTION



FOLDING DOOR
TWO-DIRECTION



RETRACTABLE
SCREEN



NO RETRACTABLE
SCREEN

Document Use

This document is a guide to support the door's Opening Preparation and Installation Instructions. Information in this document assists in the construction of the rough opening. It does not constitute actual wall fabrication, construction, or material recommendations. This document identifies considerations that must be taken into account in the construction of the rough opening. Andersen has no obligation to perform any on-site inspection, before, during, or after construction and installation.

Code Compliance

Compliance with all applicable laws, ordinances, building codes, and safety requirements with regard to Andersen specifications or use of the door is the responsibility of the architect, building owner, installer and/or contractor.

Product Protection

Store the door and any accessories off the ground, fully supported, under cover, protected from weather and construction activities. Protect uncartoned components. Continue to protect door from construction activities and floor traffic after installation.

Construction by Others

Andersen is not responsible for conditions in or performance of the building construction adjacent to and beyond the perimeter of the door. The method of attachment for the door to the building structure and the fastener selection is the responsibility of the architect, building owner, installer and/or contractor. In door replacement situations, Andersen is not responsible to inspect the site or door rough opening to approve the structural integrity of the existing rough opening, header load carrying capabilities, or overall rough opening fitness for door installation.

IMPORTANT

- Header size must be calculated to handle the structural dead load of the finished structure plus an additional 1/8" maximum live load of deflection. Failure to do so will affect operation and product performance.
- Header at full dead load deflection cannot encroach the rough opening height requirement. Doing so will affect operation and product performance.
- Rough opening framing and header (e.g. LVL, glulam, steel or lintel with header plate, etc.) must provide an anchoring surface that allows for a minimum 1-1/2" fastener embedment at all fastener locations.

Installation Site Specifications (continued)

Floor

- Floor must be structurally sound, flat, and level the entire frame width and depth and have a load carrying capacity of 100 pounds per lineal foot and a maximum deflection of 1/16" over the span of the opening after loading.

Fastening



WARNING

- Verify there are no electrical, plumbing, or HVAC components at fastener locations. Failure to do so could result in injury or property damage.

Head Jamb and Side Jamb(s)

- Fasteners (#12 x 3-1/2" pan head screw - supplied, 11/64" drill bit for pilot hole - supplied) must attach to a wood structural framing member with a 1-1/2" minimum fastener embedment, or 3 full threads of engagement - (#12 self-drilling pan head screw - by others) in structural steel studs.

Sill Fasteners

- Fasteners (#10 x 1-3/4" flat head screw - supplied) must attach to a wood structural framing member with a 1-1/2" minimum fastener embedment, or 3/16" x 1-3/4" in masonry with a 1-1/4" minimum fastener embedment. Masonry fasteners must be set back a minimum of 1-1/2" from the concrete slab's edge.

Retractable Screen/Optional Automation

NOTICE

- **DO NOT** fasten trim and/or finishing components to the retractable insect screen frame. Doing so will result in product or property damage and could affect operation and product performance. Trim removal for the retractable insect screen could be required for servicing.

IMPORTANT

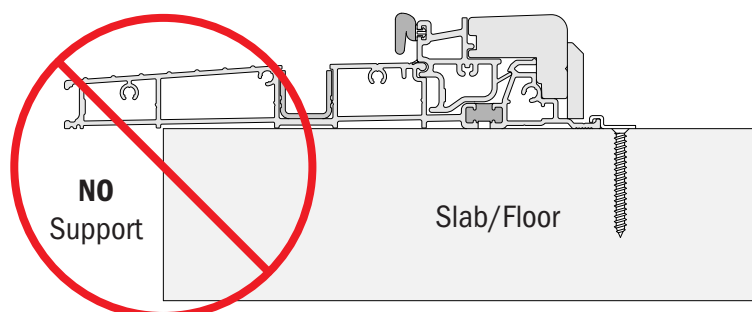
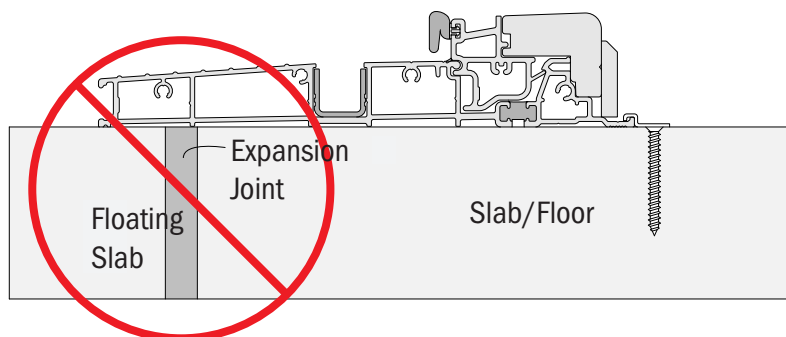
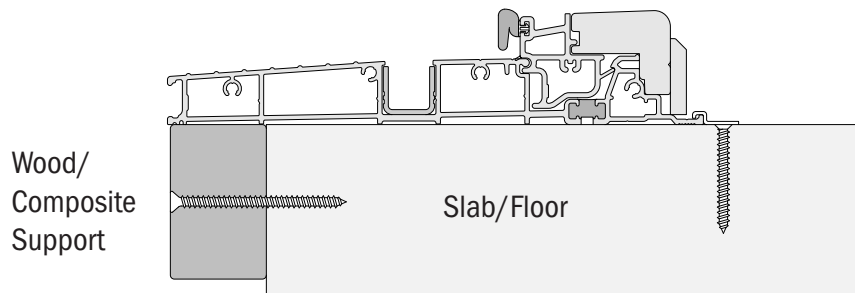
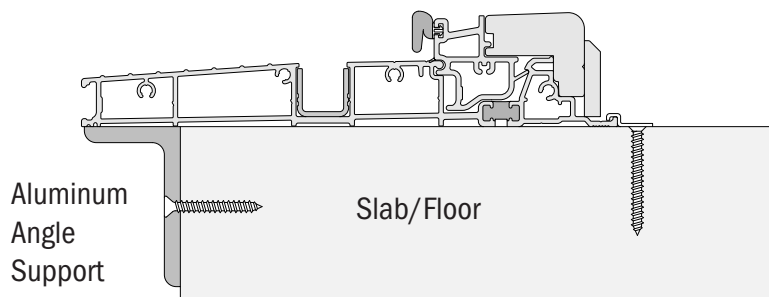
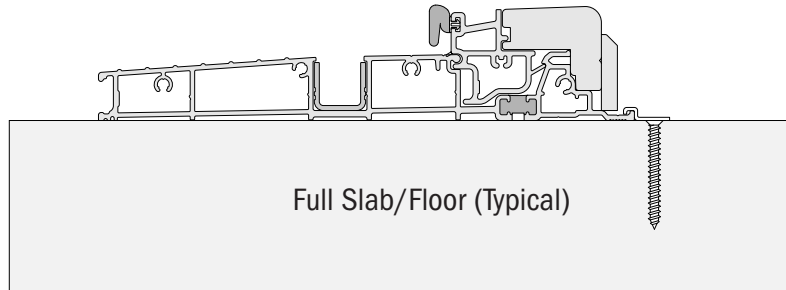
- A Dap-out for some Big Door Retractable Insect Screen Installations is required. See Vertical Detail section for your Specific Installation.
- Retractable Insect Screen frames installed adjacent to Folding Outswing Doors with On-Floor Low Threshold or Flush Sills are located 1-3/4" below the top of the finished floor. Retractable Insect Screens are not recommended for wood floor framing construction for Folding Outswing Doors with On-Floor Low Threshold or Flush Sills.

Installation Site Specifications (continued)

Sill Support

- Sill must be supported full depth. See structural support options below, where the existing slab/floor does not extend far enough to support the full depth of the sill.
- Sill Support material is supplied by others.

Folding Outswing Door On-Floor Sill Support Options



Installation Site Specifications (continued)

Folding Outswing Door Dimensions

Door dimensions are to the outermost exterior of the door frame components for Folding Outswing doors with either an On-Floor Drainage, On-Floor Low Threshold, Flush, or On-Floor Drainage with Raised Threshold Sill. The Folding Outswing door and rough opening dimensions are generated in the quoting tool.

Rough Opening Dimensions

Rough opening dimension references shown are the dimensions recommended for proper installation as instructed. These dimensions may need to be increased to allow for use of building wraps, flashings, sill panning, brackets, fasteners or other items within the rough opening. The rough opening is to be constructed in such a way as to provide structural framing members at all anchoring locations for fastening the head and side jambs. The header must be constructed in such a manner as to allow a maximum deflection of 1/8" over the span of the opening when the header is fully loaded. Due to the large jamb depths, make sure the sides of the rough opening are square to the exterior wall.

Rough Opening Dimensions are:

- Folding Outswing Door (All Sill Options) - 3/4" wider and 3/4" higher than the door dimensions

Header Height

- Folding Outswing Door (On-Floor Sill) - Rough opening header height is measured from the top of the slab or floor sheathing.
- Folding Outswing Door (Flush Sill) - Rough opening header height is measured from the bottom of the dap-out, which is 1-1/2" below the top of the finished floor. If you deviate from the 1-1/2" dap-out dimension you must calculate for the difference.

Door Component Weights

Door panels and frame components for Folding Outswing doors are heavy. The charts below provide an estimated weight for panels or frame components for handling requirement planning. Weights are approximate and will vary by door configuration.

| FRAME COMPONENT WEIGHT | |
|--|--------------|
| Actual weight will vary by material and jamb depth | |
| FRAME COMPONENT | Track Weight |
| On-Floor Drainage Sill | 3.2 lbs/ft |
| On-Floor Low Threshold Sill | 1.5 lbs/ft |
| On-Floor Drainage Sill with Raised Threshold | 3.5 lbs/ft |
| Flush Sill | 0.3 lbs/ft |
| Head Track | 4.7 lbs/ft |
| Side Jamb | 2.5 lbs/ft |

| PANEL WEIGHT | | - Dual Pane Tempered | | | |
|---|------|----------------------------|-----------|-----------|-----------|
| Actual weight will vary by glass configuration and panel type | | - Triple Pane Tempered () | | | |
| | | PANEL WIDTH | | | |
| | | 20" | 30" | 40" | 48" |
| PANEL HEIGHT | 80" | 80 lbs | 106 lbs | 132 lbs | 153 lbs |
| | | (92 lbs) | (129 lbs) | (166 lbs) | (195 lbs) |
| | 90" | 90 lbs | 118 lbs | 147 lbs | 170 lbs |
| | | (103 lbs) | (144 lbs) | (185 lbs) | (218 lbs) |
| | 100" | 106 lbs | 145 lbs | 183 lbs | 214 lbs |
| | | (114 lbs) | (159 lbs) | (205 lbs) | (n/a) |
| | 115" | 121 lbs | 165 lbs | 209 lbs | 245 lbs |
| | | (144 lbs) | (208 lbs) | (n/a) | (n/a) |

IMPORTANT

- Folding Outswing Door configurations are illustrated in document 113644 - **Installation Layout Door Configurations**. Use this document to reference your specific unit.

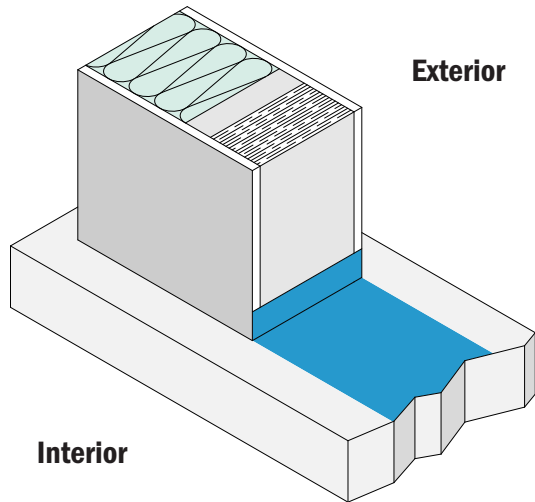
Installation Site Specifications (continued)

Additional Installation Information

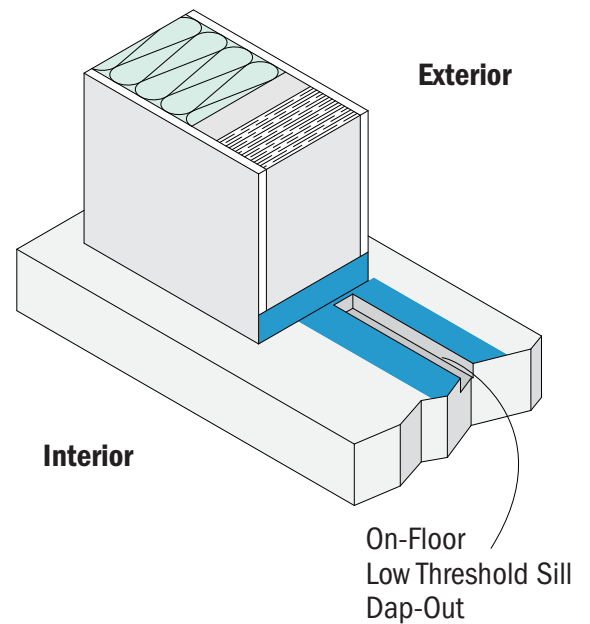
For dimensional stability, engineered lumber is recommended for the wall studs where the top, bottom, and wall pivots will be attached.

***IMPORTANT** - THESE STUDS MUST BE PLUMB AND LEVEL

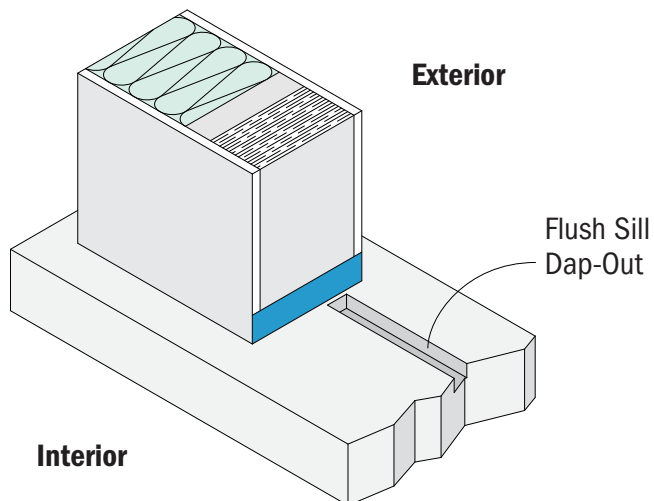
On-Floor Drainage Sill and On-Floor Drainage Sill with Raised Threshold (without Retractable Insect Screen)



On-Floor Low Threshold Sill (without Retractable Insect Screen)



Flush Sill (without Retractable Insect Screen)



 = Liquid Flashing
Sill Locations

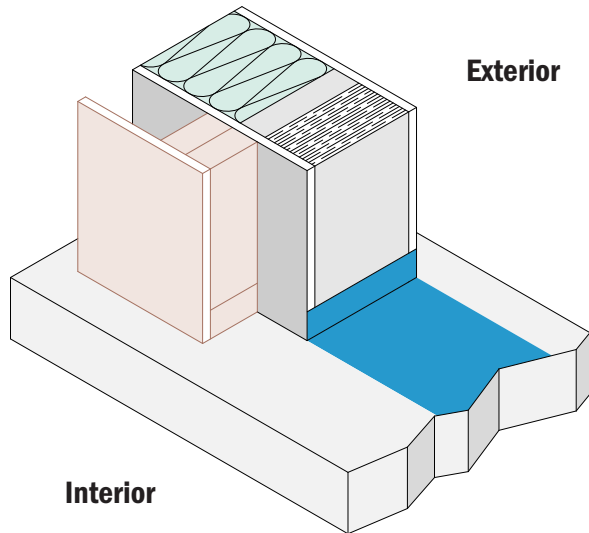
Installation Site Specifications (continued)

Additional Installation Information

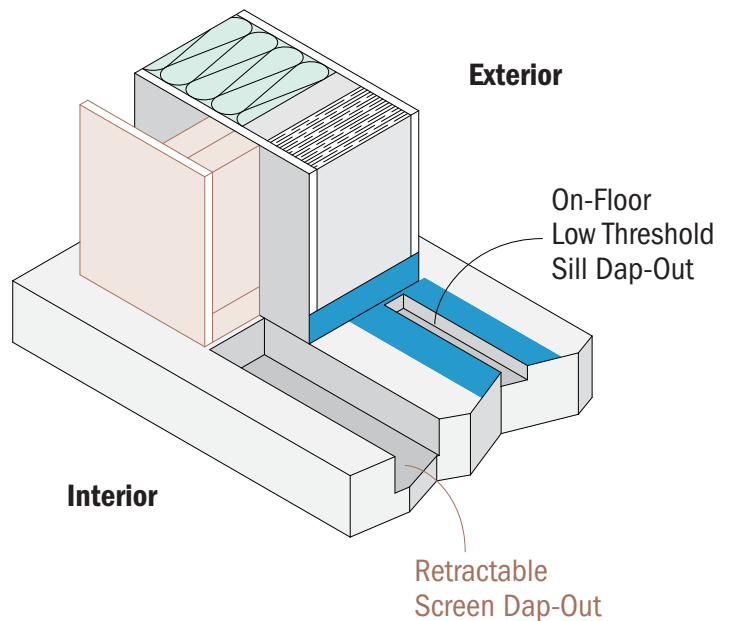
For dimensional stability, engineered lumber is recommended for the wall studs where the top, bottom, and wall pivots will be attached.

***IMPORTANT** - THESE STUDS MUST BE PLUMB AND LEVEL

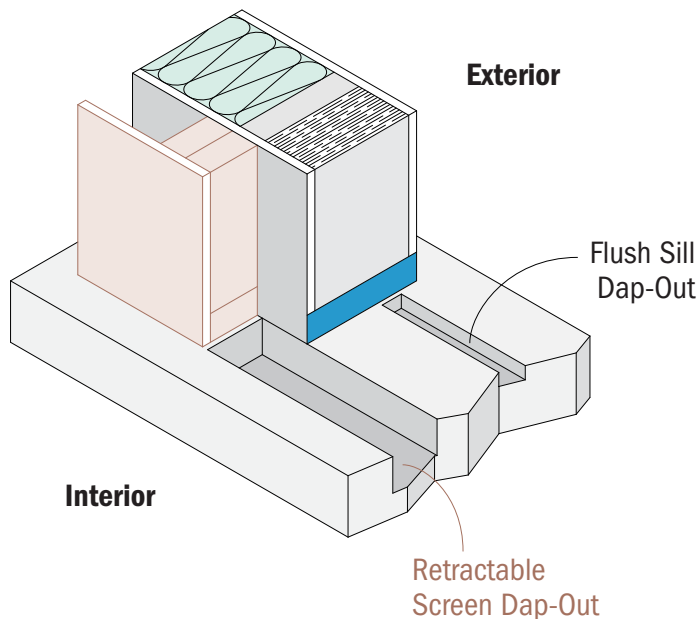
On-Floor Drainage Sill and On-Floor Drainage Sill with Raised Threshold (with Retractable Insect Screen)



On-Floor Low Threshold Sill (with Retractable Insect Screen)



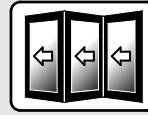
Flush Sill (with Retractable Insect Screen)



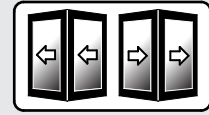
 = Liquid Flashing
Sill Locations

Vertical Details

One-Direction and Two-Direction Panel Operation
without Retractable Insect Screen



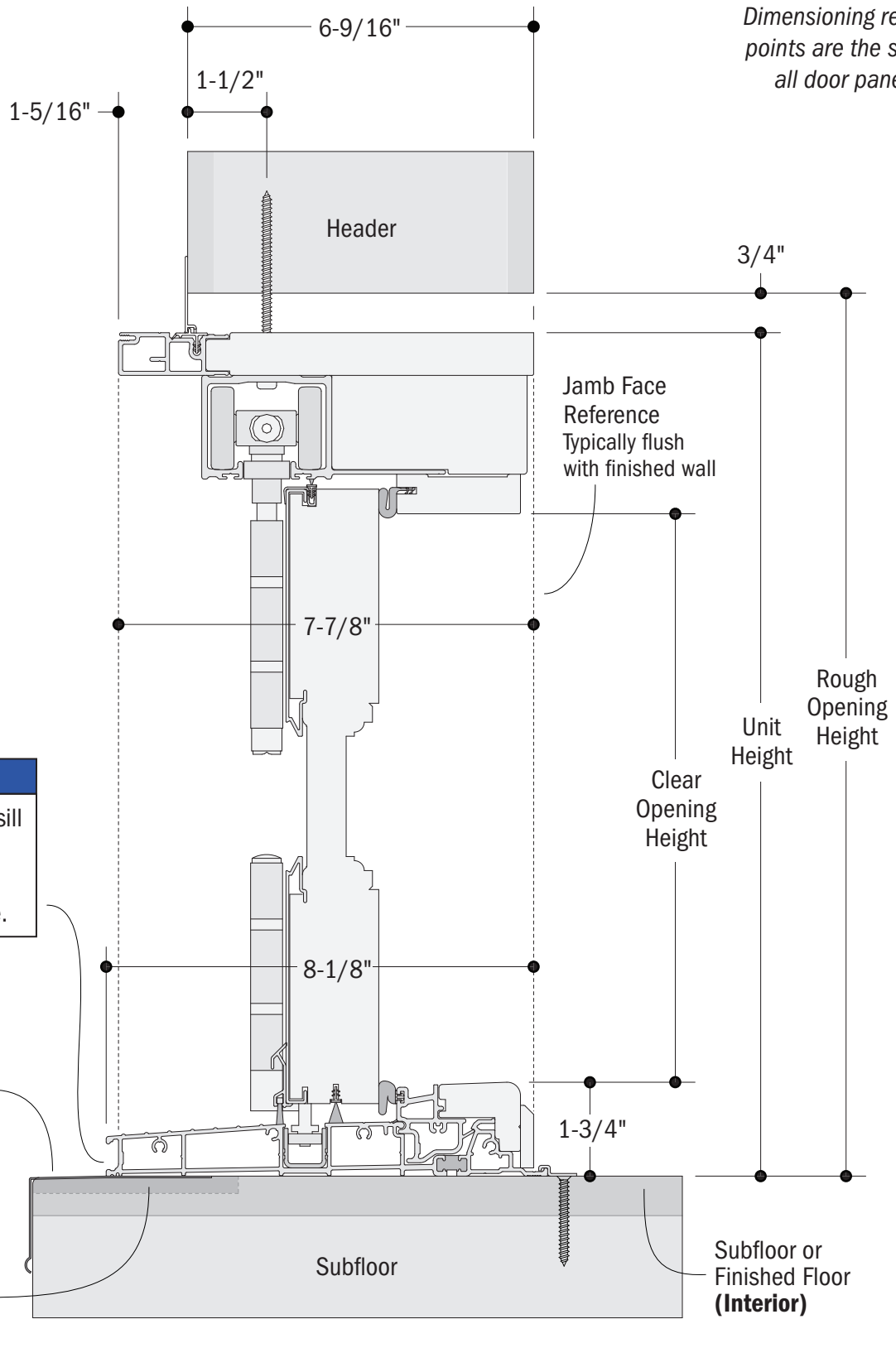
FOLDING DOOR
ONE-DIRECTION



FOLDING DOOR
TWO-DIRECTION



NO RETRACTABLE
SCREEN



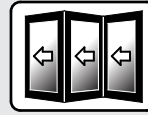
NOTICE

- **DO NOT** block sill drains. Doing so could result in property damage.

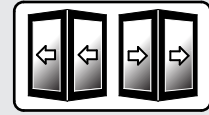
ON-FLOOR DRAINAGE SILL

Vertical Details (continued)

One-Direction and Two-Direction Panel Operation without Retractable Insect Screen



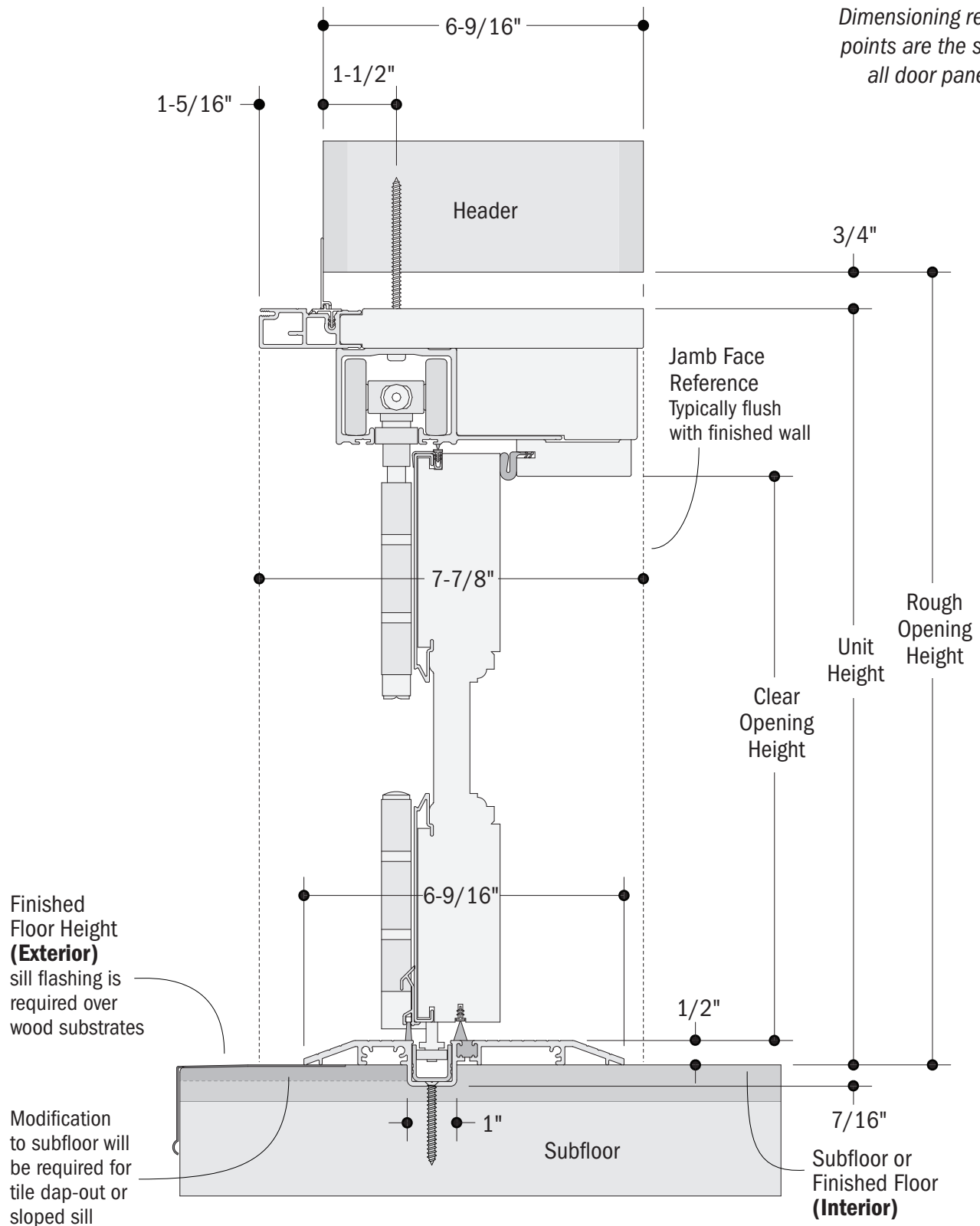
FOLDING DOOR
ONE-DIRECTION



FOLDING DOOR
TWO-DIRECTION



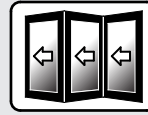
NO RETRACTABLE
SCREEN



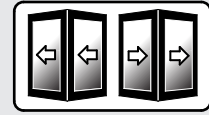
ON-FLOOR LOW THRESHOLD SILL

Vertical Details (continued)

One-Direction and Two-Direction Panel Operation without Retractable Insect Screen



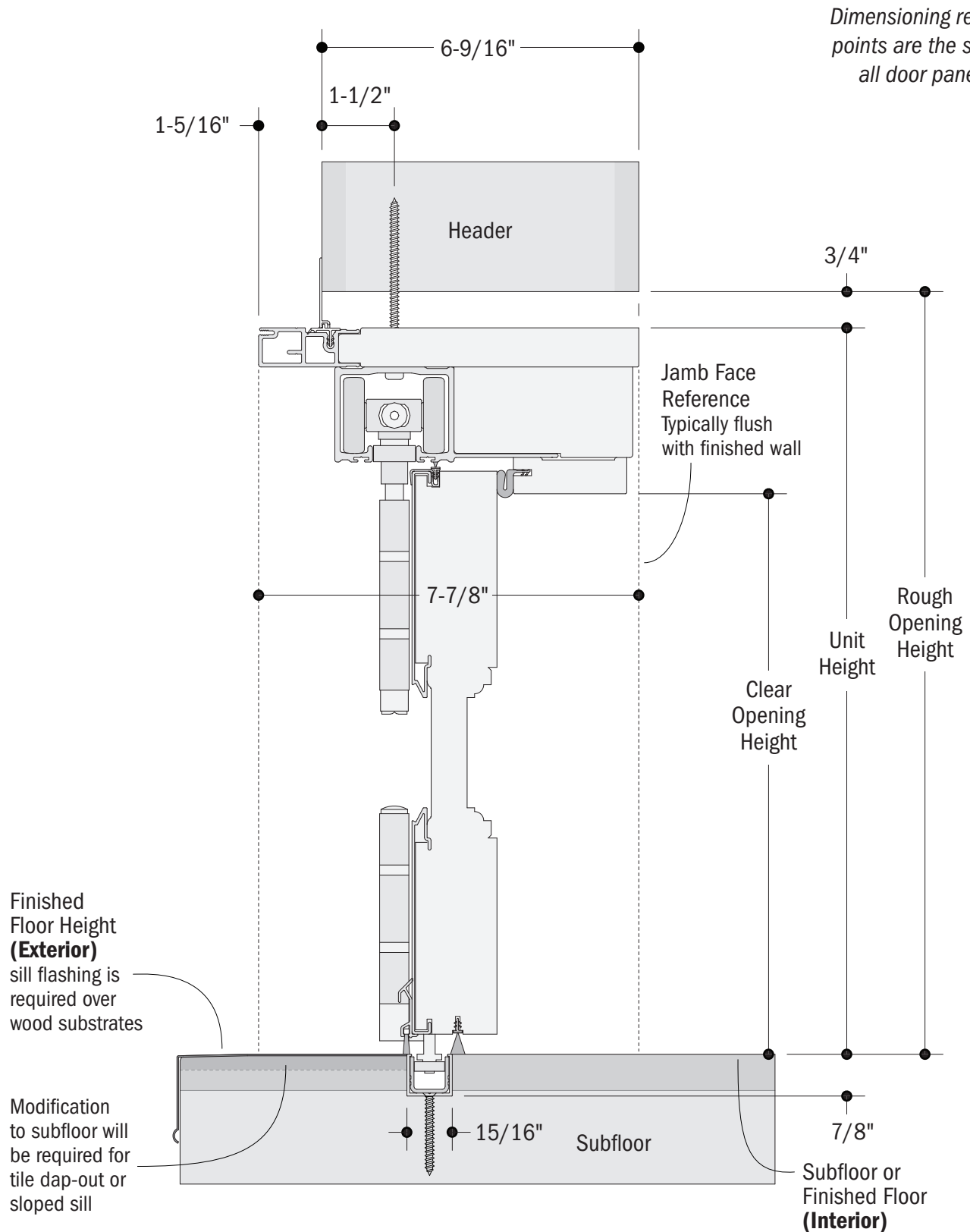
FOLDING DOOR
ONE-DIRECTION



FOLDING DOOR
TWO-DIRECTION



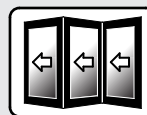
NO RETRACTABLE
SCREEN



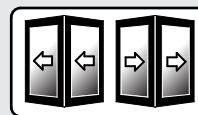
FLUSH SILL

Vertical Details (continued)

One-Direction and Two-Direction Panel Operation without Retractable Insect Screen



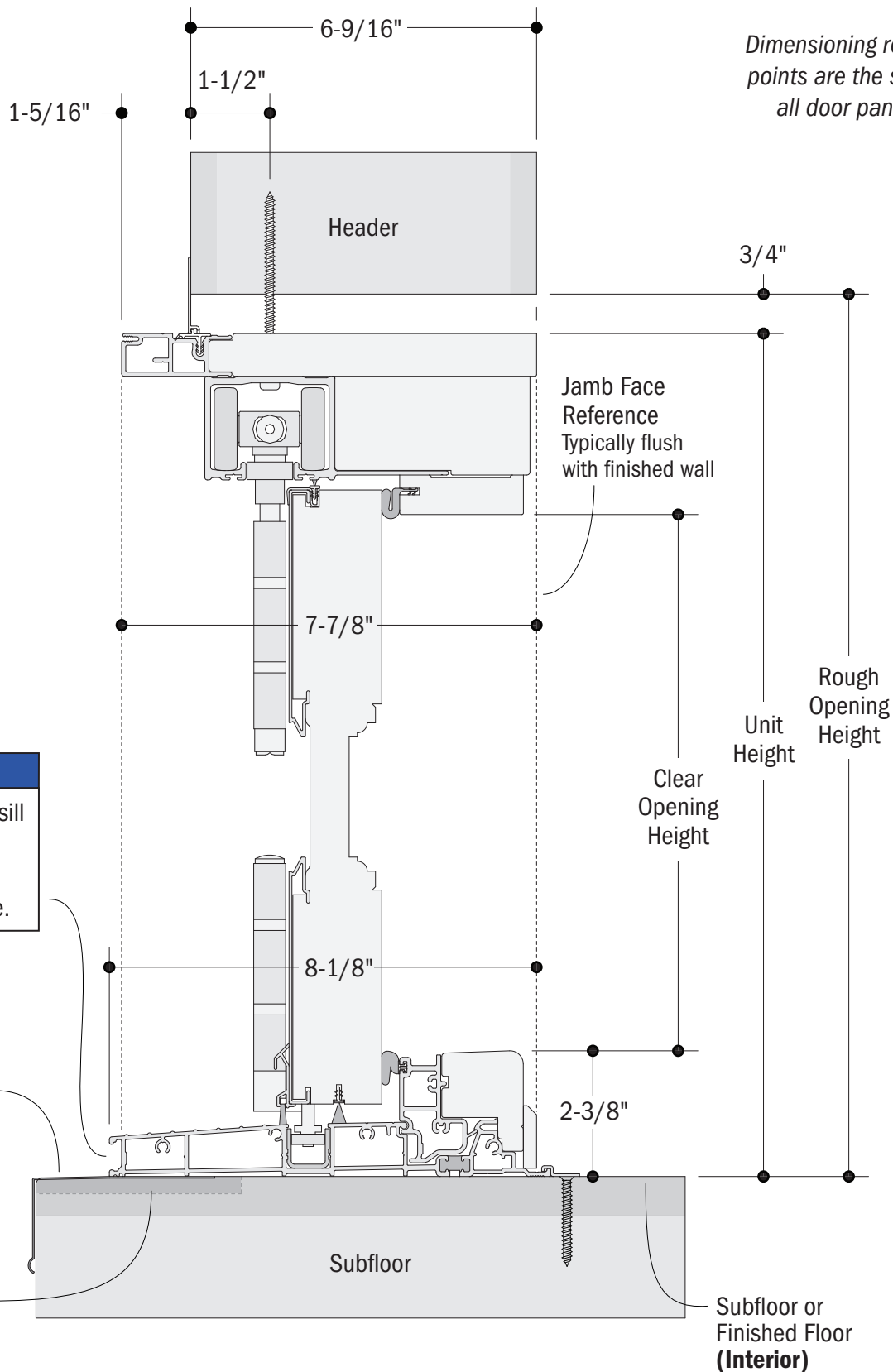
FOLDING DOOR
ONE-DIRECTION



FOLDING DOOR
TWO-DIRECTION



NO RETRACTABLE
SCREEN



ON-FLOOR DRAINAGE SILL with RAISED THRESHOLD

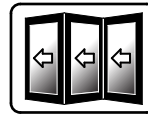
One-Direction and Two-Direction Panel Operation with Retractable Insect Screen



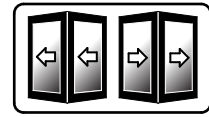
ON-FLOOR DRAINAGE SILL (Bottom Retractable Insect Screen Track on Supplied Floor Shims)

Vertical Details (continued)

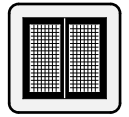
One-Direction and Two-Direction Panel Operation with Retractable Insect Screen



BIG DOOR
ONE-DIRECTION

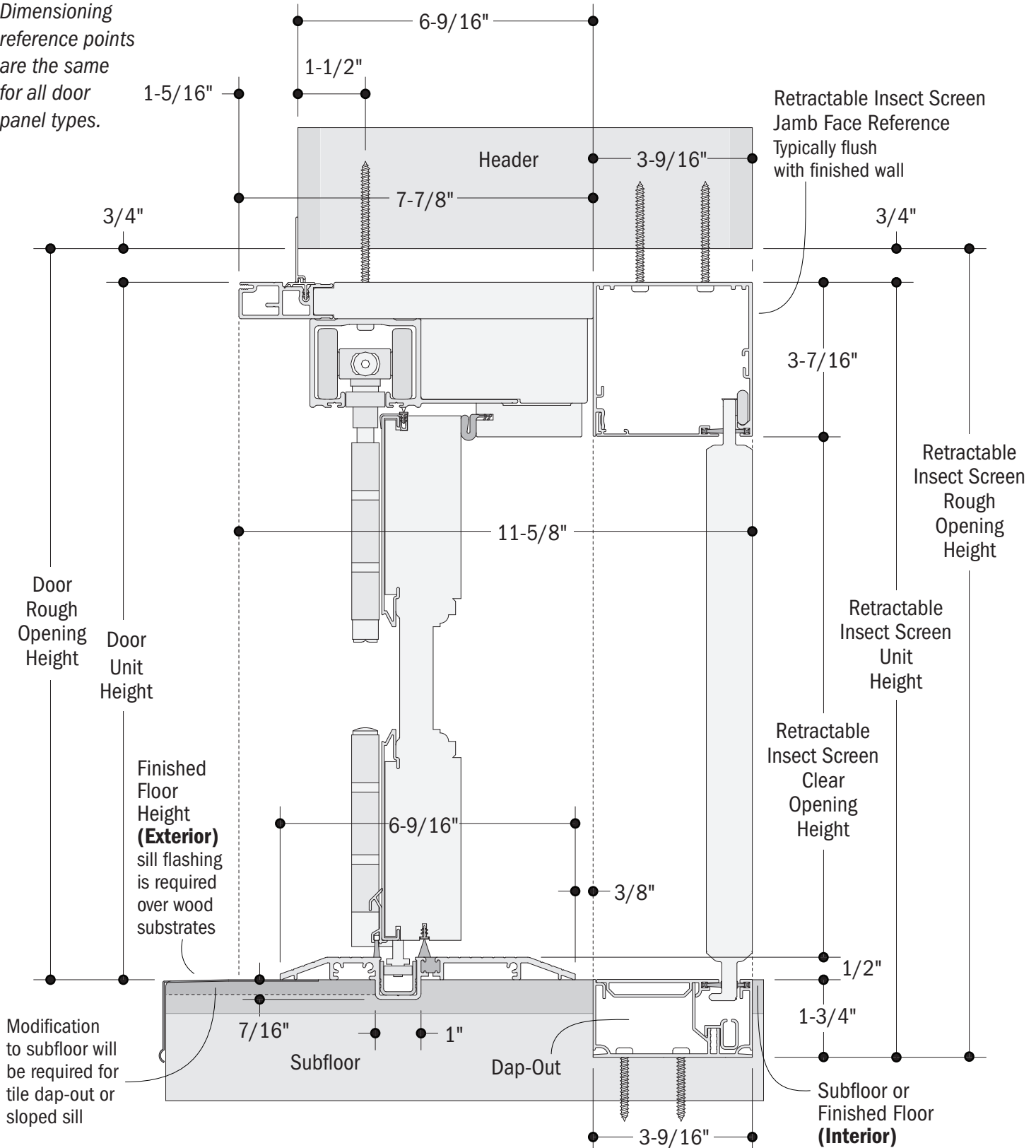


BIG DOOR
TWO-DIRECTION



RETRACTABLE
SCREEN

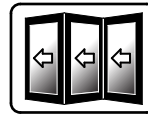
Dimensioning
reference points
are the same
for all door
panel types.



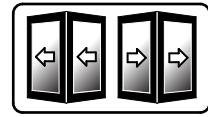
ON-FLOOR LOW THRESHOLD SILL
(Retractable Insect Screen Track Flush with Finished Floor)

Vertical Details (continued)

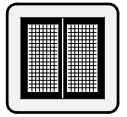
One-Direction and Two-Direction Panel Operation with Retractable Insect Screen



**BIG DOOR
ONE-DIRECTION**



**BIG DOOR
TWO-DIRECTION**

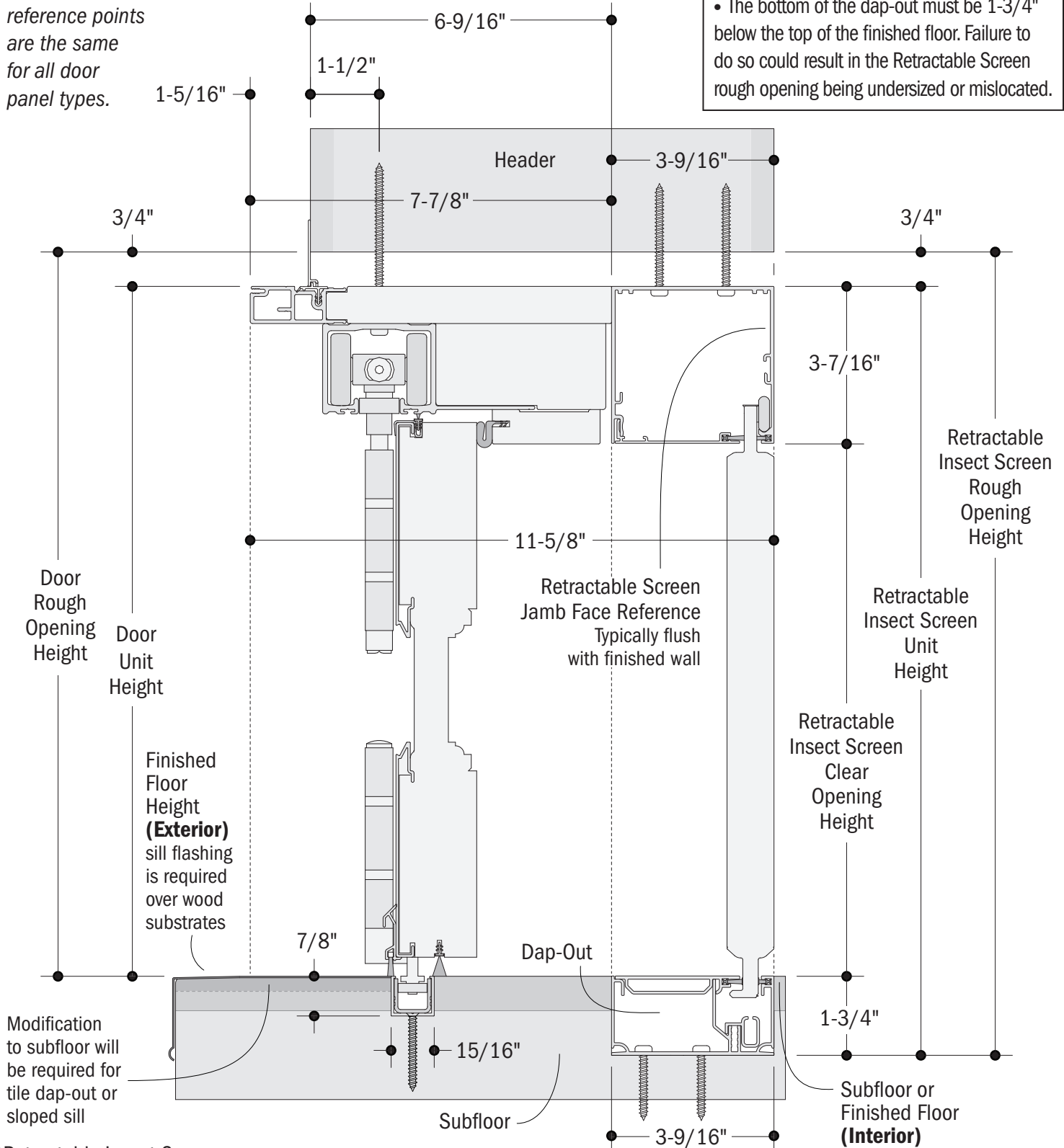


**RETRACTABLE
SCREEN**

IMPORTANT

- The bottom of the dap-out must be 1-3/4" below the top of the finished floor. Failure to do so could result in the Retractable Screen rough opening being undersized or mislocated.

Dimensioning
reference points
are the same
for all door
panel types.

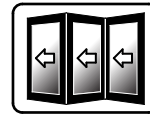


*Retractable Insect Screens are not recommended for wood floor construction.

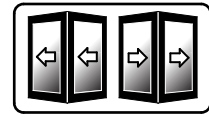
FLUSH SILL
(Retractable Insect Screen Track Flush with Finished Floor)*

Vertical Details (continued)

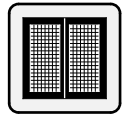
One-Direction and Two-Direction Panel Operation with Retractable Insect Screen



BIG DOOR
ONE-DIRECTION

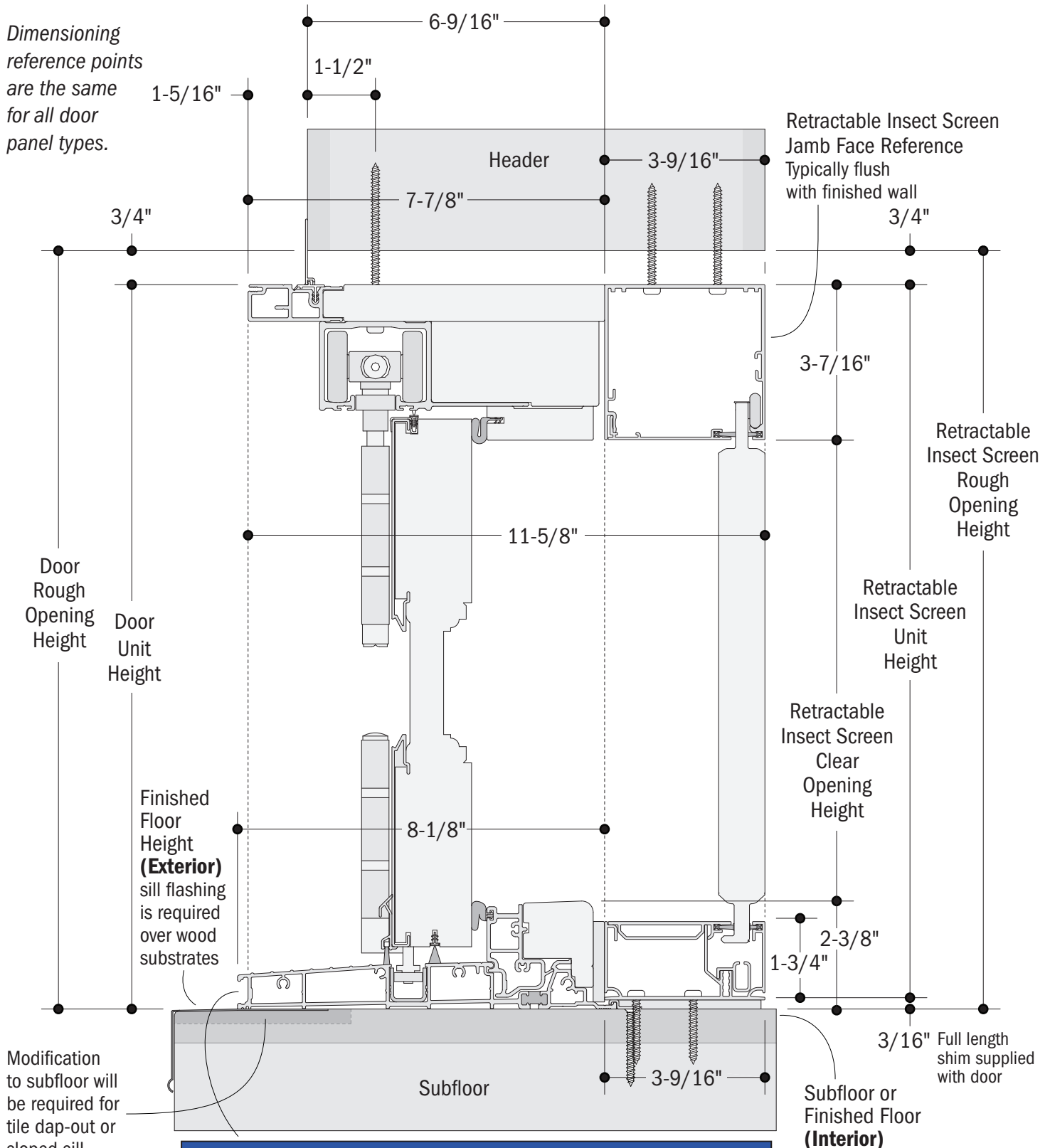


BIG DOOR
TWO-DIRECTION



RETRACTABLE
SCREEN

Dimensioning
reference points
are the same
for all door
panel types.



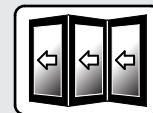
NOTICE

- **DO NOT** block sill drains. Doing so could result in property damage.

ON-FLOOR DRAINAGE SILL with RAISED THRESHOLD (Bottom Retractable Insect Screen Track on Supplied Floor Shim)

Horizontal Details

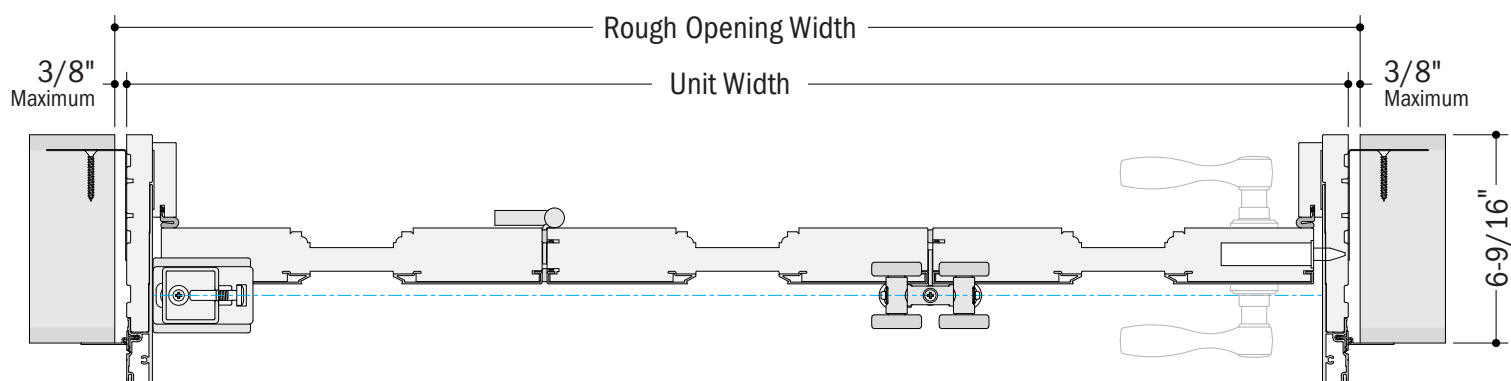
One-Direction Panel Operation (Closed and Open)
without Retractable Insect Screen



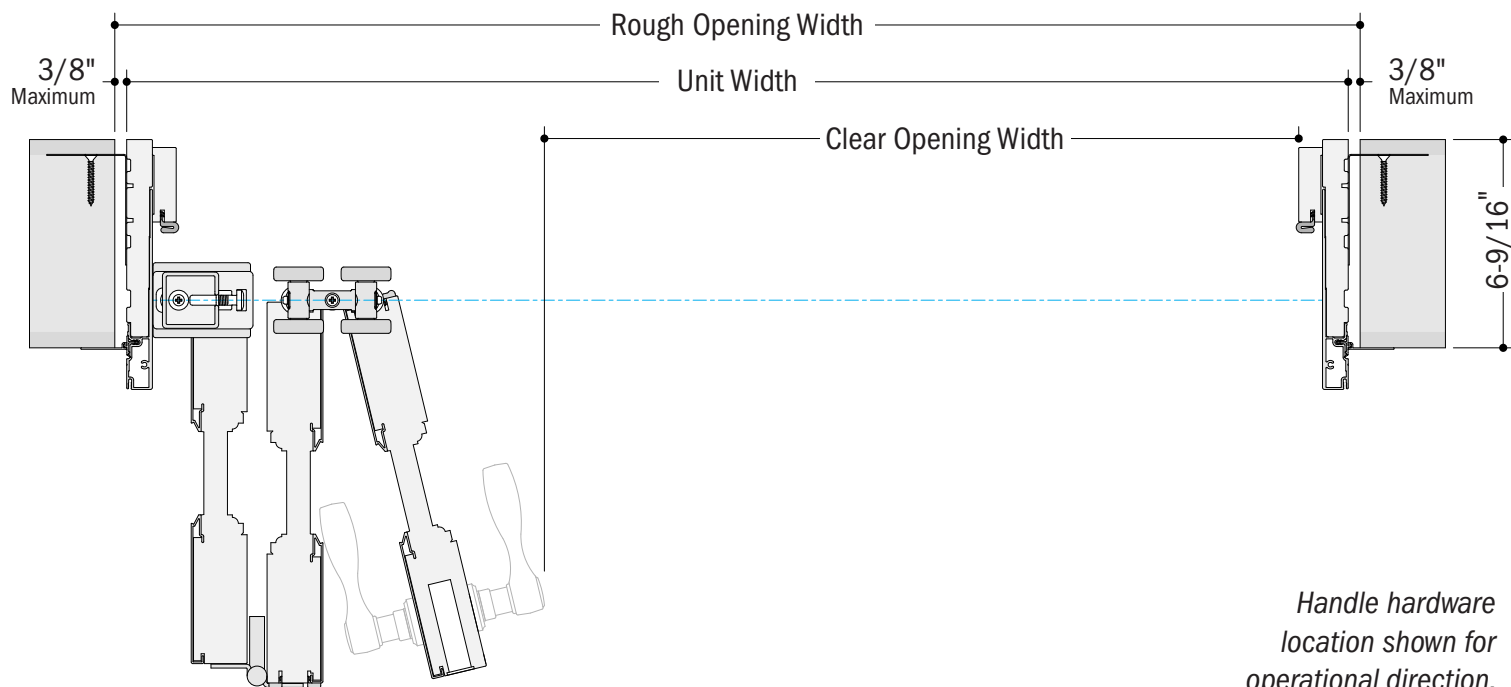
FOLDING DOOR
ONE-DIRECTION



NO RETRACTABLE
SCREEN



**ON-FLOOR DRAINAGE, ON-FLOOR LOW THRESHOLD,
FLUSH, and ON-FLOOR DRAINAGE with RAISED THRESHOLD SILLS**
(Closed)



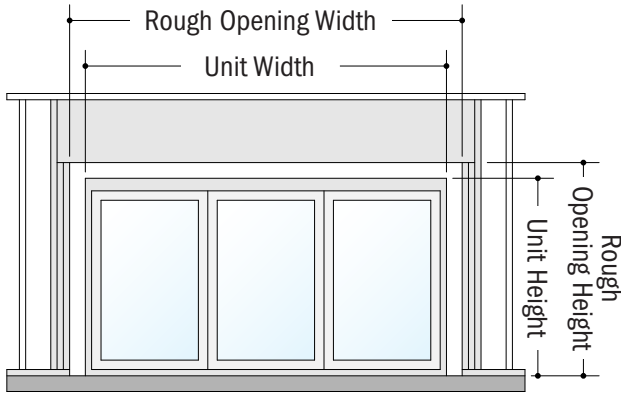
**ON-FLOOR DRAINAGE, ON-FLOOR LOW THRESHOLD,
FLUSH, and ON-FLOOR DRAINAGE with RAISED THRESHOLD SILLS**
(Open)

Typical Rough Framing

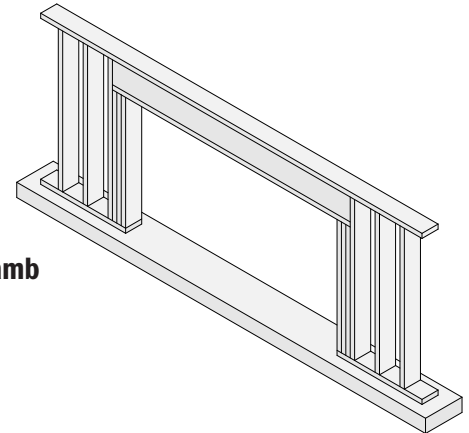
One-Direction Panel Operation without Retractable Insect Screen



Shown as viewed from the **EXTERIOR** without sheathing for clarity



Jamb-Jamb



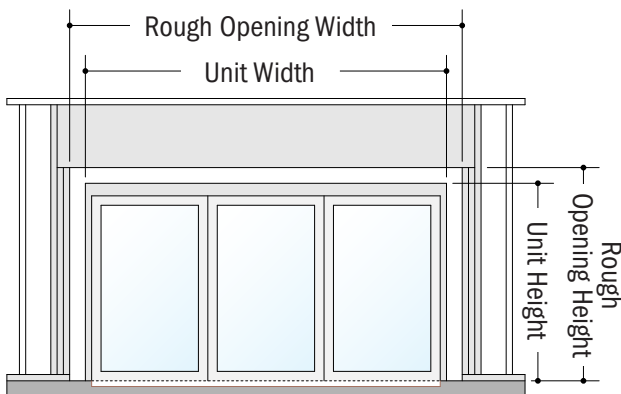
EXTERIOR

ON-FLOOR DRAINAGE SILL or ON-FLOOR DRAINAGE SILL with RAISED THRESHOLD

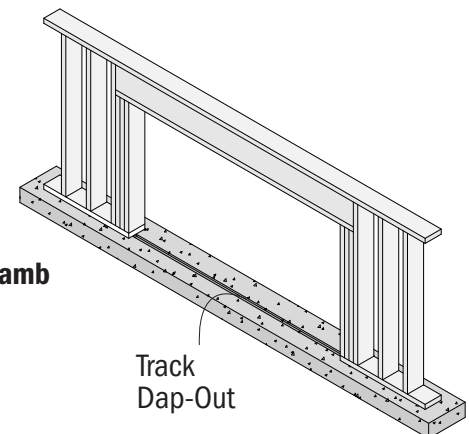
Wood or Concrete

IMPORTANT

- See the **Installation Site Specifications** for header requirements.



Jamb-Jamb



Track
Dap-Out

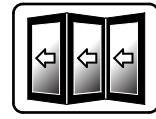
EXTERIOR

ON-FLOOR LOW THRESHOLD SILL or FLUSH SILL

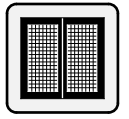
Wood or Concrete

Horizontal Details

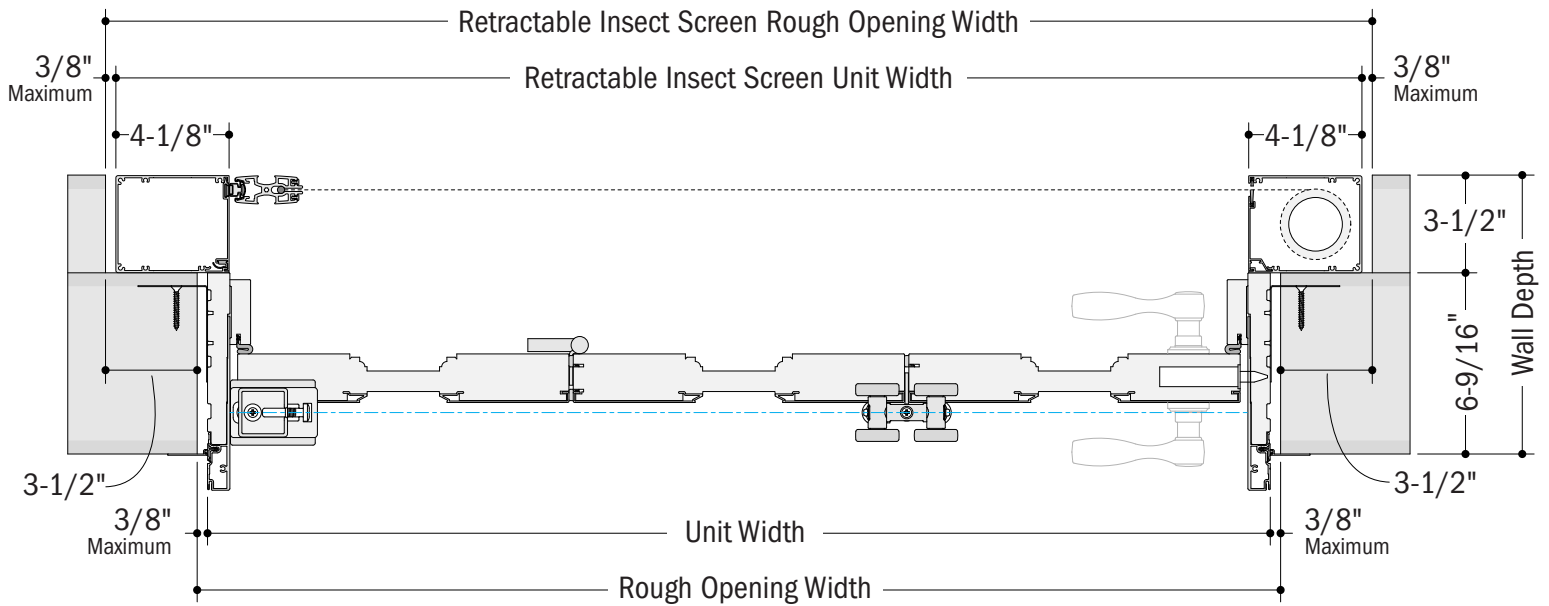
One-Direction Panel Operation (Closed and Open)
with Retractable Insect Screen



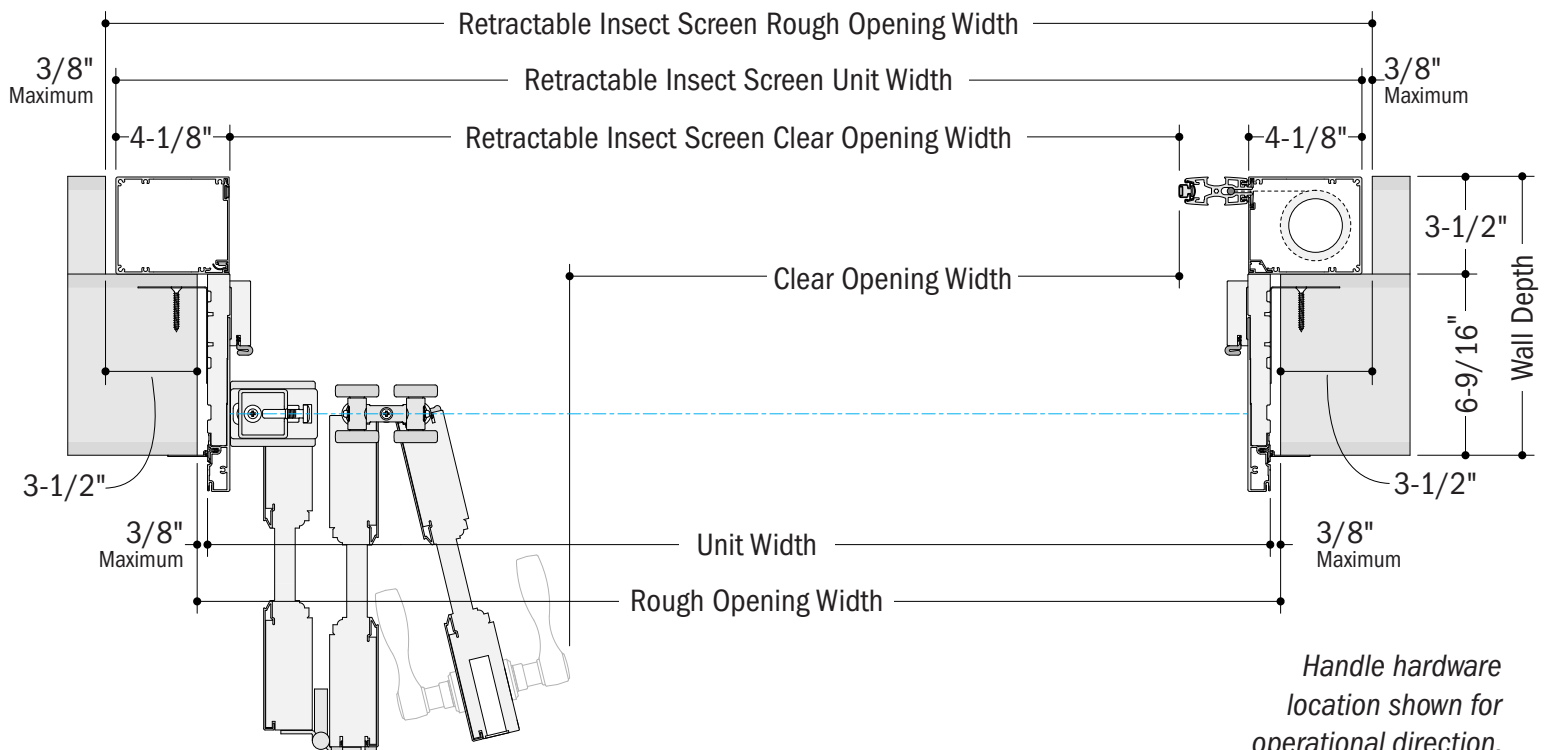
BIG DOOR
ONE-DIRECTION



RETRACTABLE
SCREEN



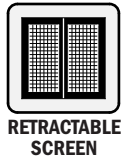
**ON-FLOOR DRAINAGE, ON-FLOOR LOW THRESHOLD,
FLUSH, and ON-FLOOR DRAINAGE with RAISED THRESHOLD SILLS**
(Closed)



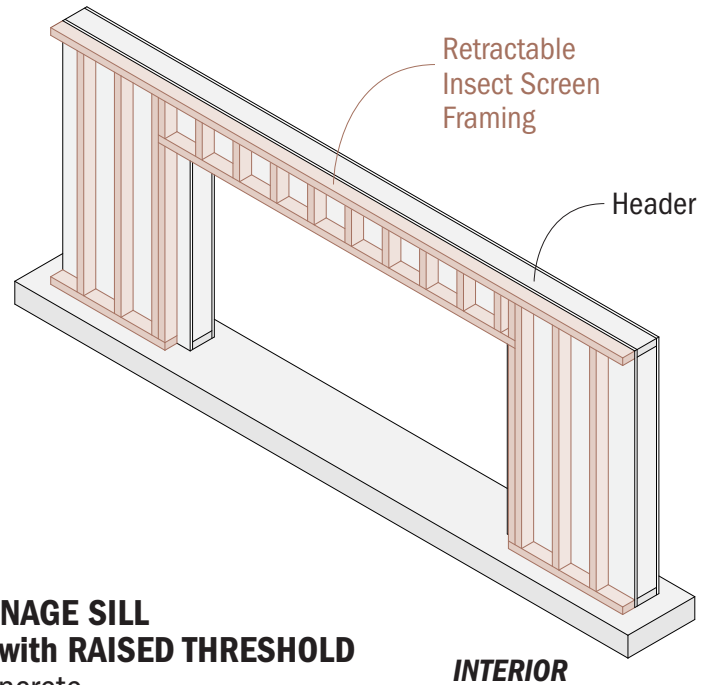
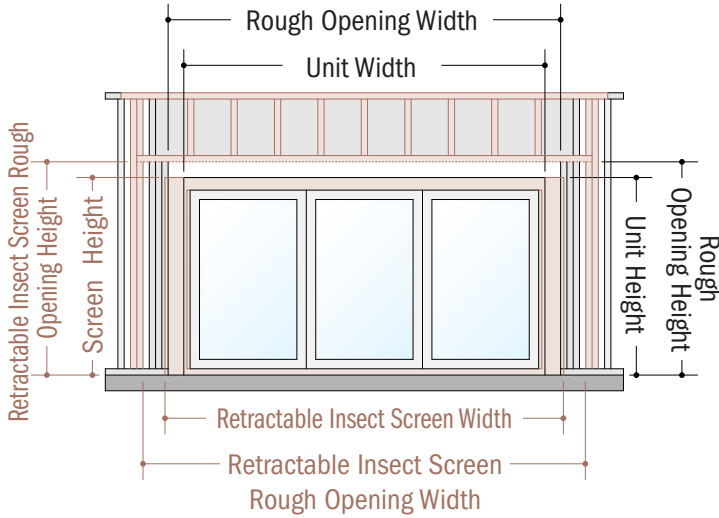
**ON-FLOOR DRAINAGE, ON-FLOOR LOW THRESHOLD,
FLUSH, and ON-FLOOR DRAINAGE with RAISED THRESHOLD SILLS**
(Open)

Typical Rough Framing

One-Direction Panel Operation with Retractable Insect Screen



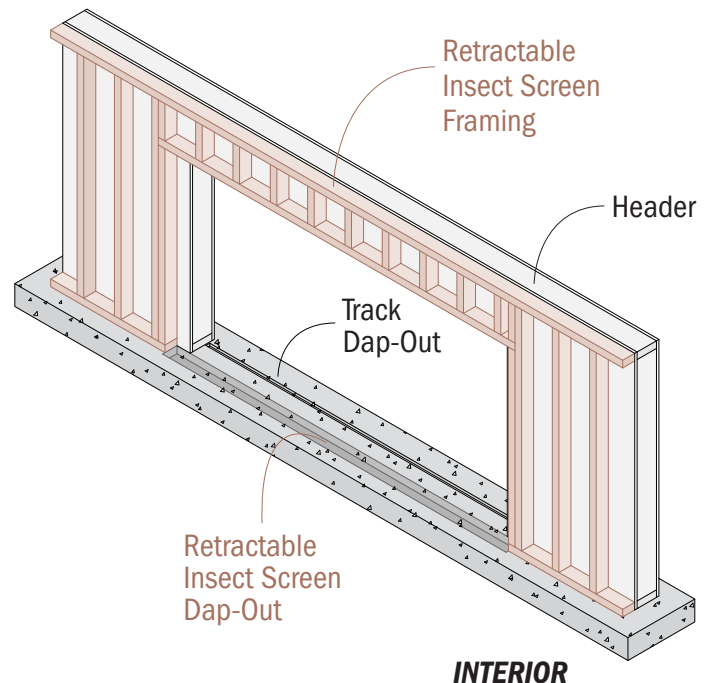
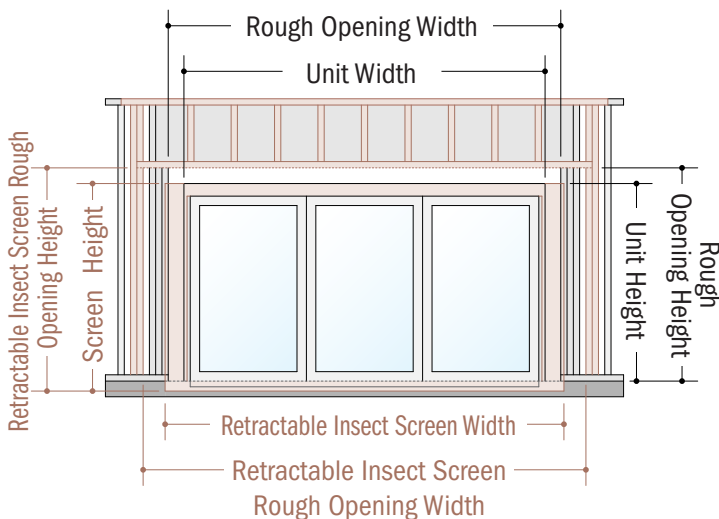
Shown as viewed from the **INTERIOR** without sheathing for clarity



ON-FLOOR DRAINAGE SILL
or **ON-FLOOR DRAINAGE SILL with RAISED THRESHOLD**
Wood or Concrete

IMPORTANT

- See the **Installation Site Specifications** for header requirements.

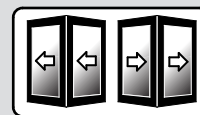


*Folding Outswing Doors with On-Floor Low-Threshold or Flush sill options with Retractable Insect Screens are not recommended for wood floor construction.

ON-FLOOR LOW THRESHOLD SILL
or **FLUSH SILL**
Concrete*

Horizontal Details

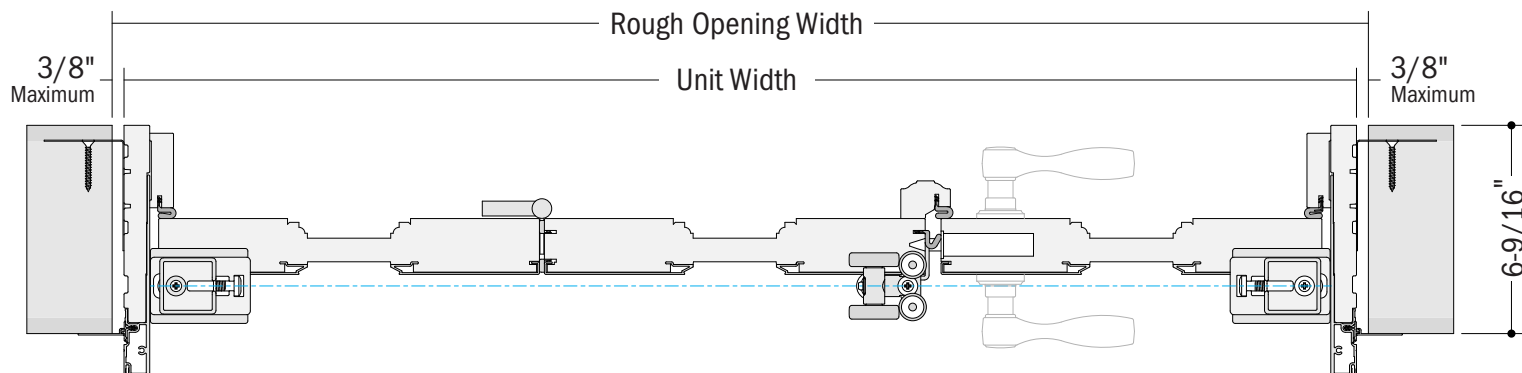
Two-Direction Panel Operation (Closed and Open)
without Retractable Insect Screen



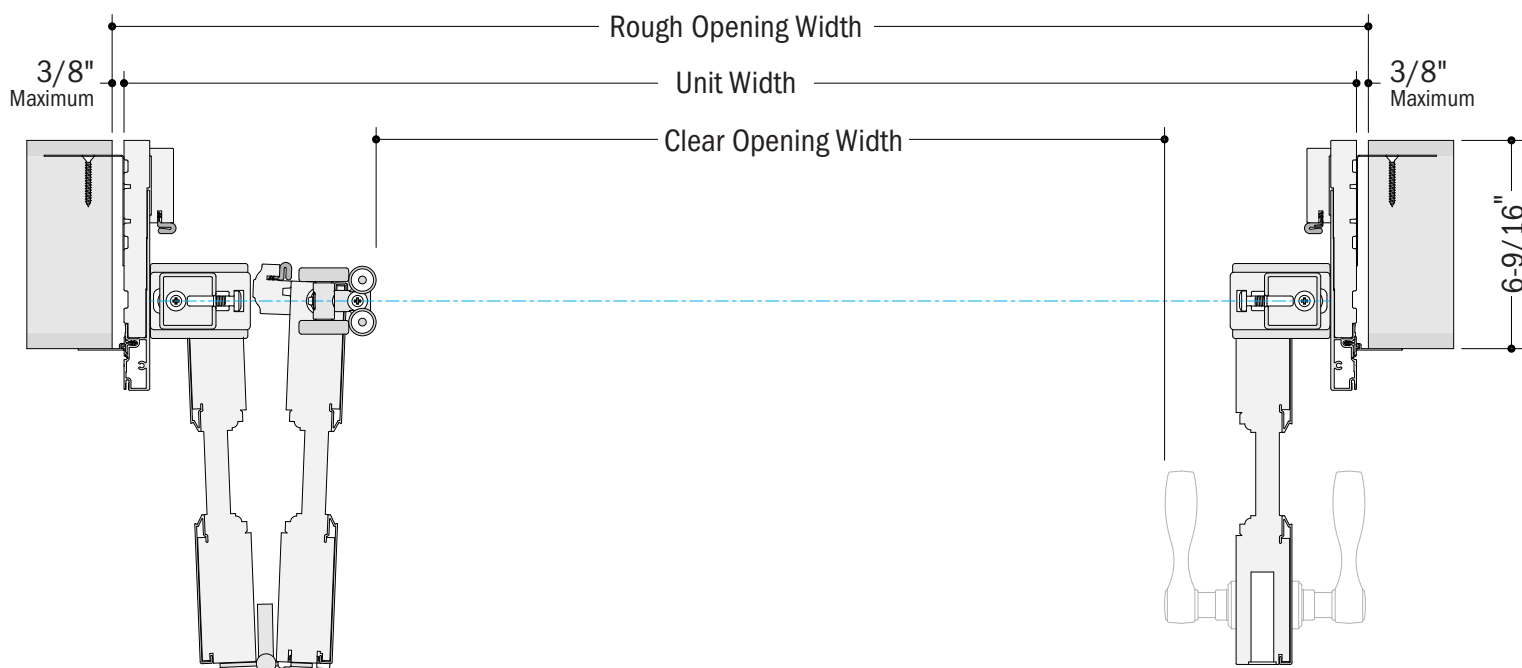
FOLDING DOOR
TWO-DIRECTION



NO RETRACTABLE
SCREEN



**ON-FLOOR DRAINAGE, ON-FLOOR LOW THRESHOLD,
FLUSH, and ON-FLOOR DRAINAGE with RAISED THRESHOLD SILLS**
(Closed)

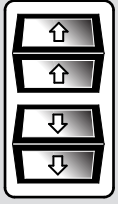


*Handle hardware
location shown for
operational direction.*

**ON-FLOOR DRAINAGE, ON-FLOOR LOW THRESHOLD,
FLUSH, and ON-FLOOR DRAINAGE with RAISED THRESHOLD SILLS**
(Open)

Horizontal Details

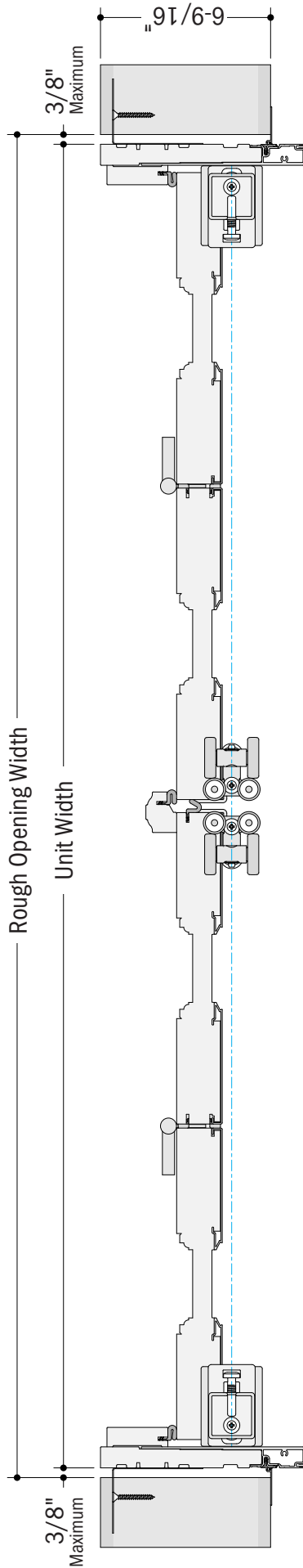
Two-Direction Panel Operation (Closed and Open)
without Retractable Insect Screen



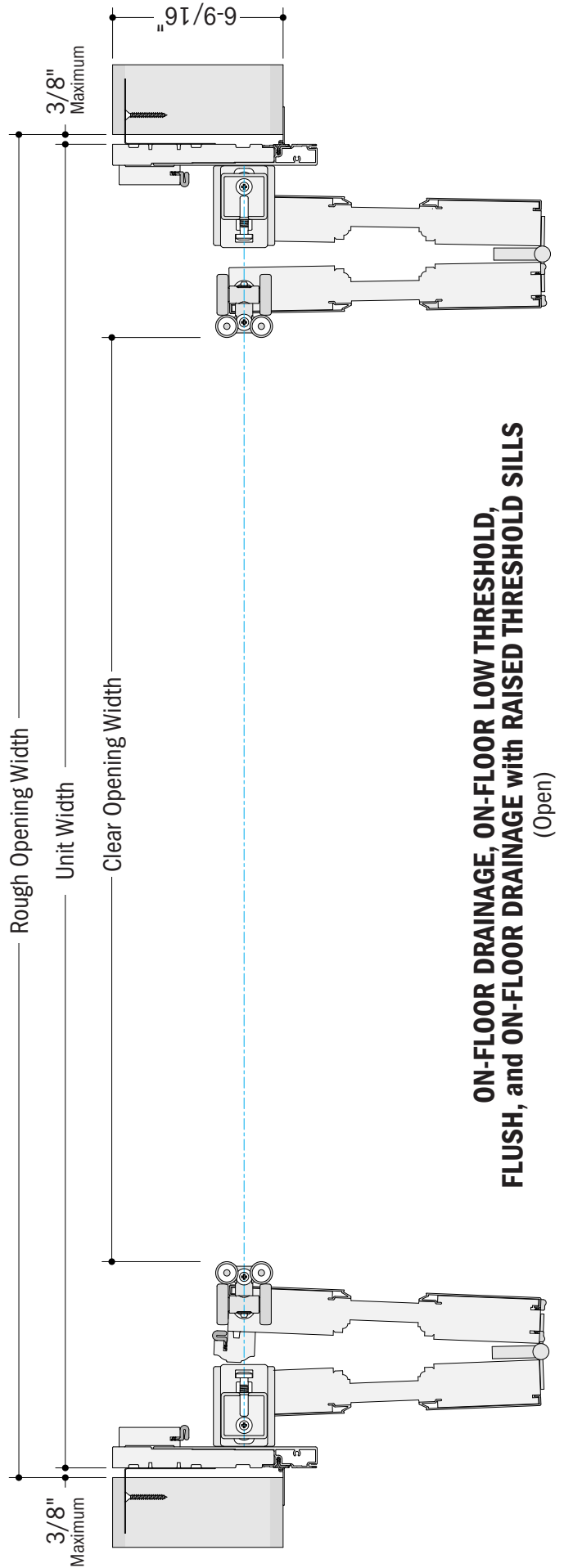
FOLDING DOOR
TWO-DIRECTION



NO RETRACTABLE
SCREEN

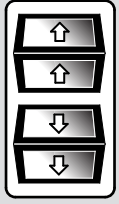


**ON-FLOOR DRAINAGE, ON-FLOOR LOW THRESHOLD,
FLUSH, and ON-FLOOR DRAINAGE with RAISED THRESHOLD SILLS**
(Closed)



**ON-FLOOR DRAINAGE, ON-FLOOR LOW THRESHOLD,
FLUSH, and ON-FLOOR DRAINAGE with RAISED THRESHOLD SILLS**
(Open)

Horizontal Details (continued) Two-Direction Panel Operation (Closed and Open) without Retractable Insect Screen

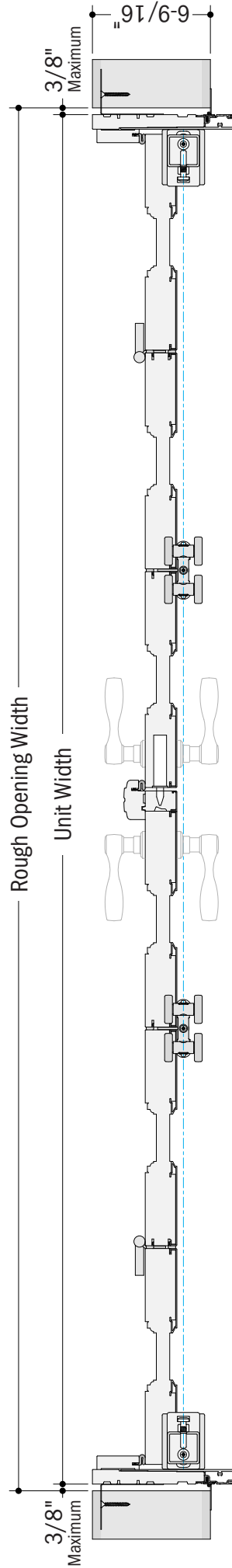


FOLDING DOOR
TWO-DIRECTION

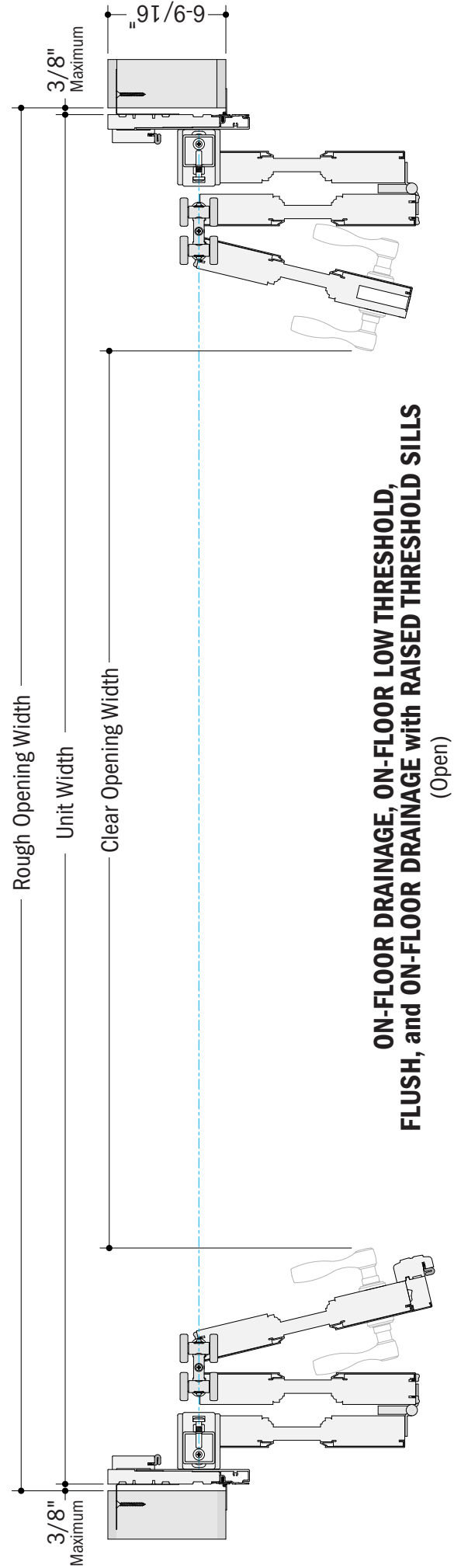


NO RETRACTABLE
SCREEN

Handle hardware location
shown for operational direction.



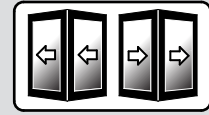
**ON-FLOOR DRAINAGE, ON-FLOOR LOW THRESHOLD,
FLUSH, and ON-FLOOR DRAINAGE with RAISED THRESHOLD SILLS**
(Closed)



**ON-FLOOR DRAINAGE, ON-FLOOR LOW THRESHOLD,
FLUSH, and ON-FLOOR DRAINAGE with RAISED THRESHOLD SILLS**
(Open)

Typical Rough Framing

Two-Direction Panel Operation without Retractable Insect Screen

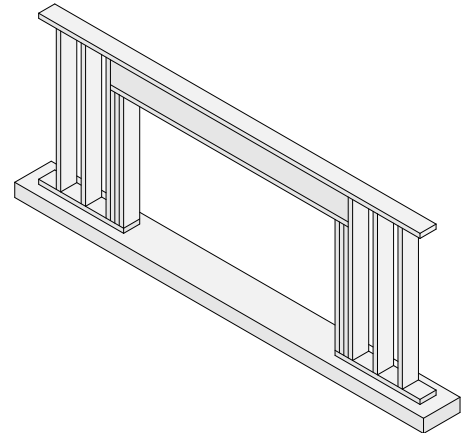
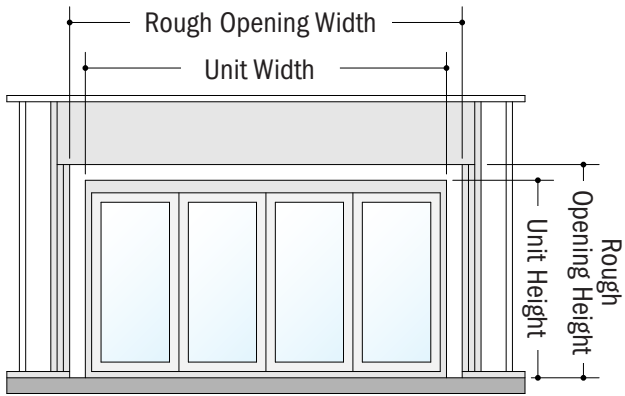


FOLDING DOOR
TWO-DIRECTION



NO RETRACTABLE
SCREEN

Shown as viewed from the **EXTERIOR** without sheathing for clarity



EXTERIOR

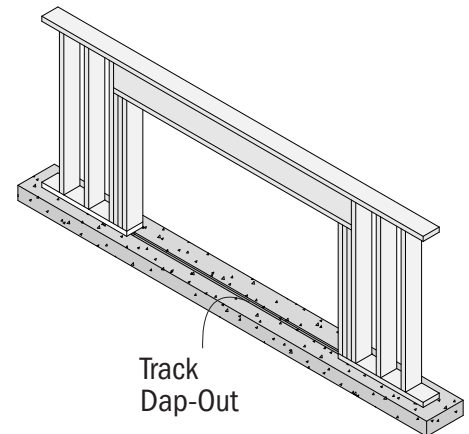
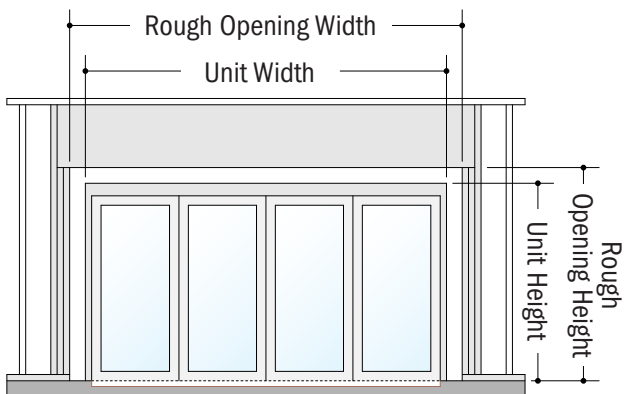
ON-FLOOR DRAINAGE SILL

ON-FLOOR DRAINAGE SILL with RAISED THRESHOLD

Wood or Concrete

IMPORTANT

- See the **Installation Site Specifications** for header requirements.



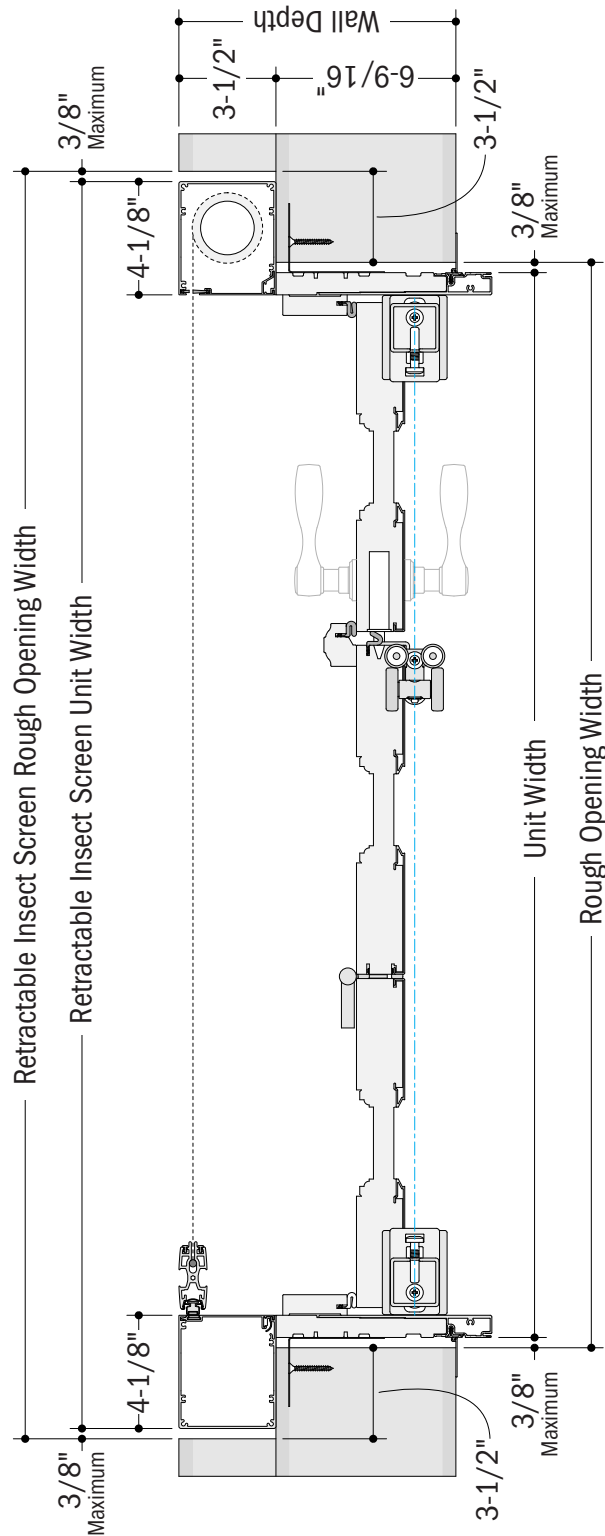
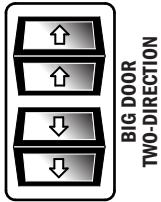
EXTERIOR

ON-FLOOR LOW THRESHOLD SILL

or FLUSH SILL

Concrete*

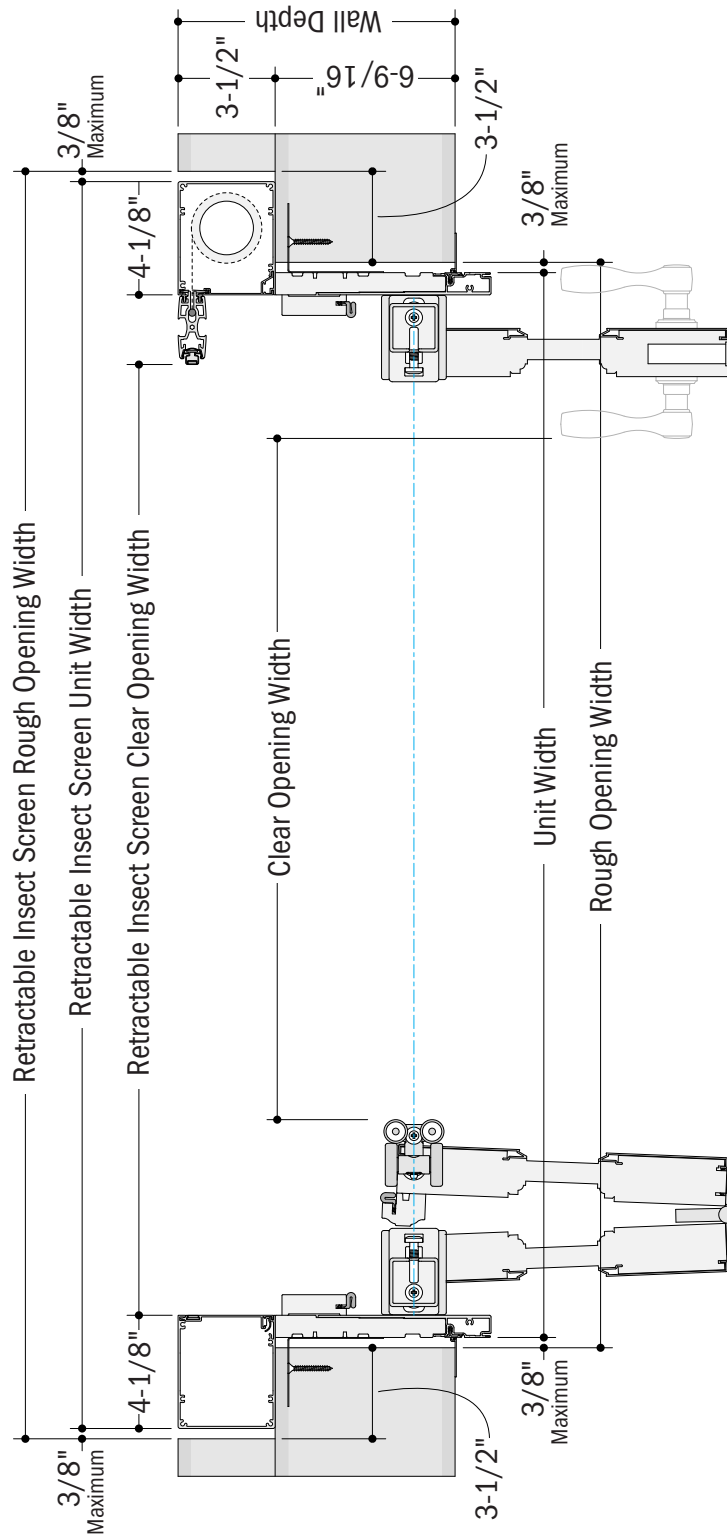
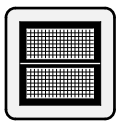
Horizontal Details (continued) Two-Direction Panel Operation (Closed) with Retractable Insect Screen (Single)



Handle hardware
 location shown for
 operational direction.

**ON-FLOOR DRAINAGE, ON-FLOOR LOW THRESHOLD,
 FLUSH, and ON-FLOOR DRAINAGE with RAISED THRESHOLD SILLS**

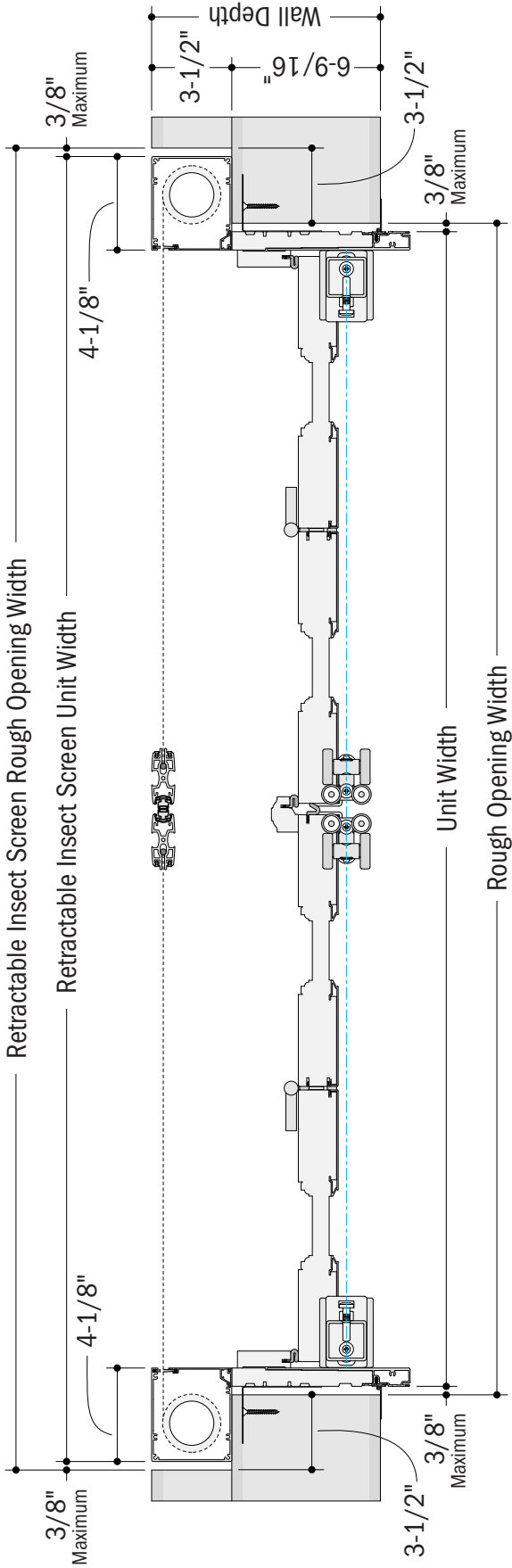
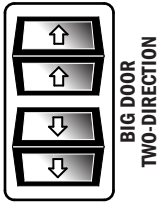
Horizontal Details (continued) Two-Direction Panel Operation (Open) with Retractable Insect Screen (Single)



**ON-FLOOR DRAINAGE, ON-FLOOR LOW THRESHOLD,
 FLUSH, and ON-FLOOR DRAINAGE with RAISED THRESHOLD SILLS**

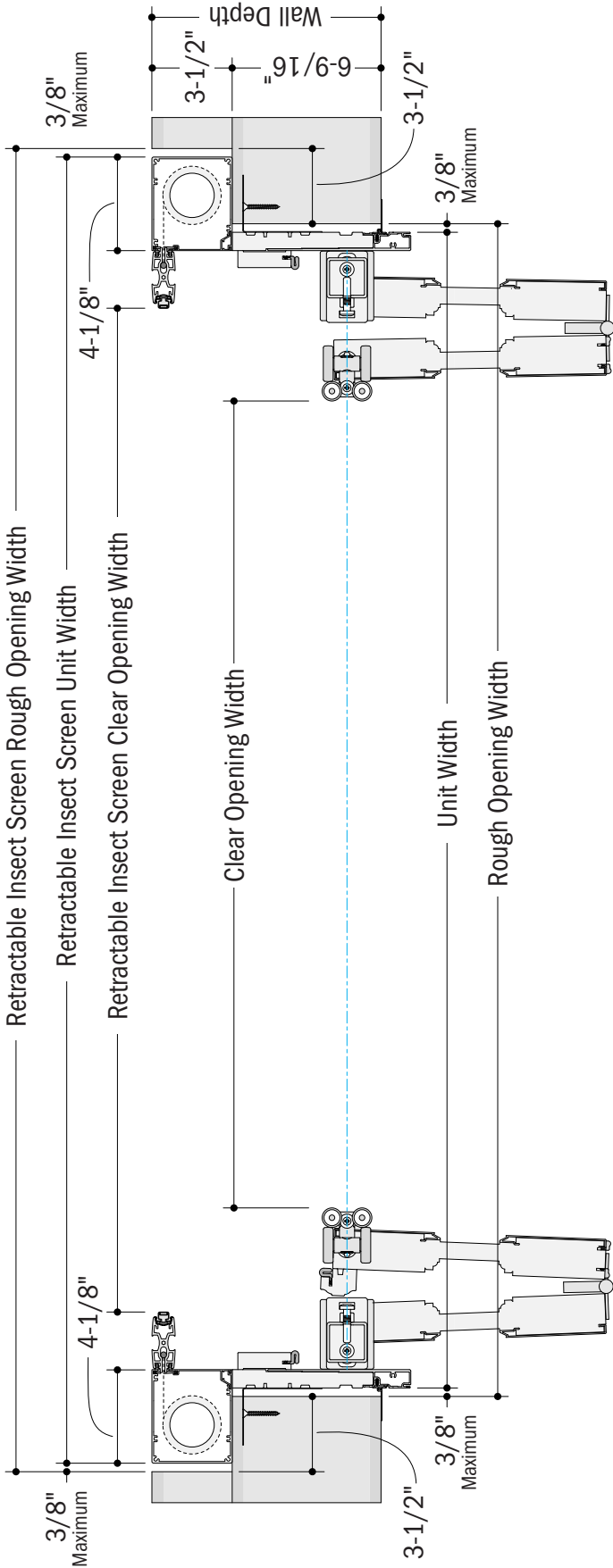
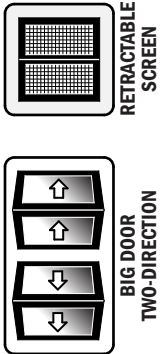
Handle hardware
 location shown for
 operational direction.

Horizontal Details (continued)
Two-Direction Panel Operation (Closed)
with Retractable Insect Screen (Double)



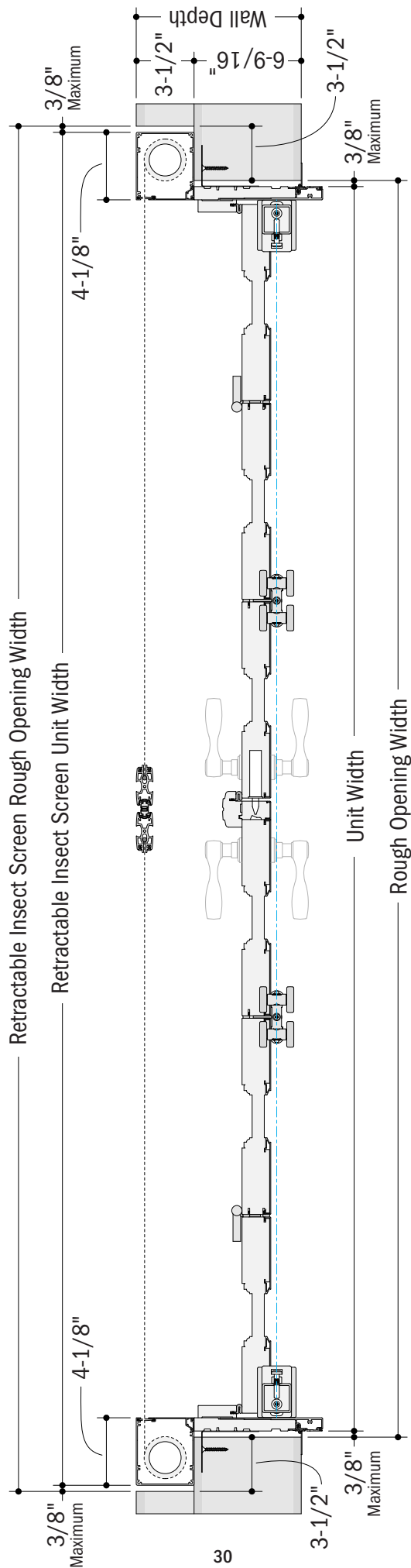
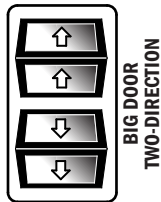
**ON-FLOOR DRAINAGE, ON-FLOOR LOW THRESHOLD,
 FLUSH, and ON-FLOOR DRAINAGE with RAISED THRESHOLD SILLS**

Horizontal Details (continued) Two-Direction Panel Operation (Open) with Retractable Insect Screen (Double)



**ON-FLOOR DRAINAGE, ON-FLOOR LOW THRESHOLD,
 FLUSH, and ON-FLOOR DRAINAGE with RAISED THRESHOLD SILLS**

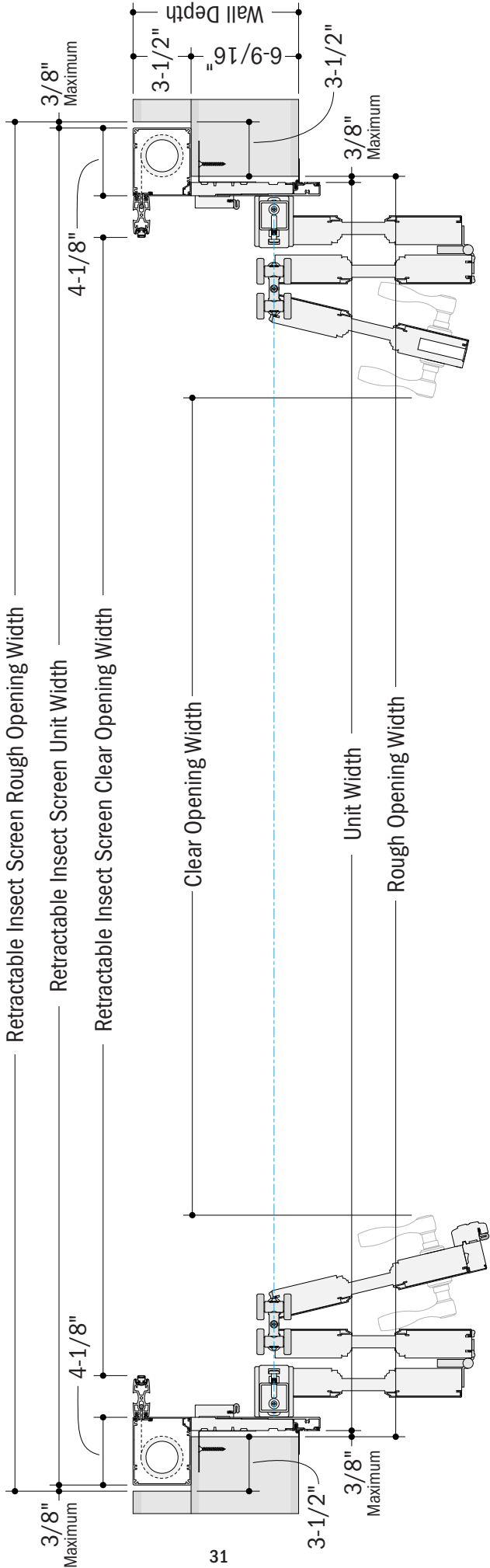
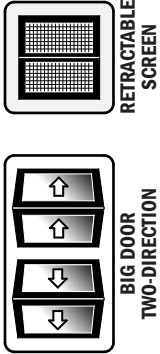
Horizontal Details (continued) Two-Direction Panel Operation (Closed) with Retractable Insect Screen (Double)



**ON-FLOOR DRAINAGE, ON-FLOOR LOW THRESHOLD,
 FLUSH, and ON-FLOOR DRAINAGE with RAISED THRESHOLD SILLS**

*Handle hardware
 location shown for
 operational direction.*

Horizontal Details (continued)
Two-Direction Panel Operation (Open)
with Retractable Insect Screen (Double)

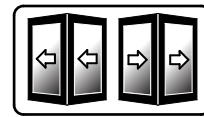


Handle hardware
location shown for
operational direction.

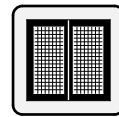
**ON-FLOOR DRAINAGE, ON-FLOOR LOW THRESHOLD,
FLUSH, and ON-FLOOR DRAINAGE with RAISED THRESHOLD SILLS**

Typical Rough Framing

Two-Direction Panel Operation with Retractable Insect Screen

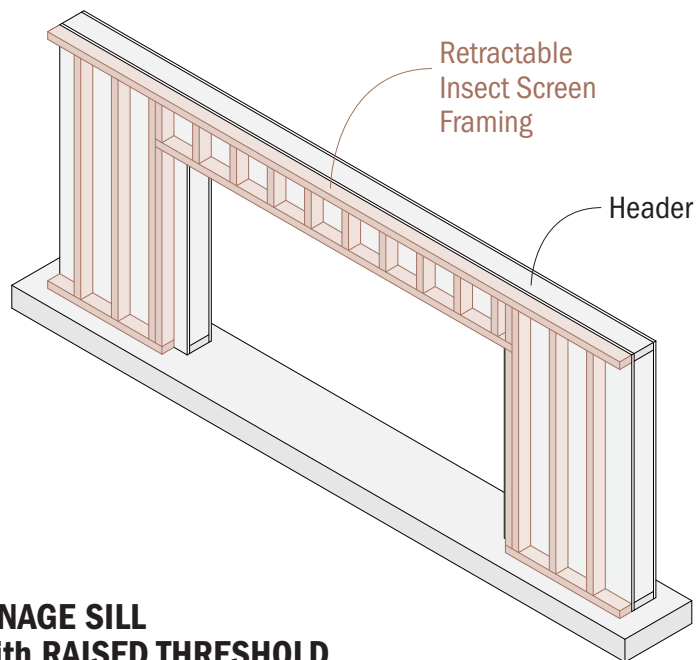
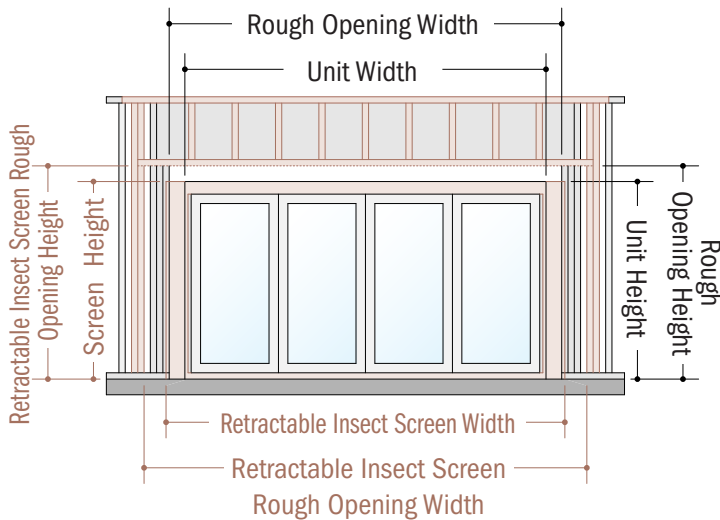


**BIG DOOR
TWO-DIRECTION**



**RETRACTABLE
SCREEN**

Shown as viewed from the **INTERIOR** without sheathing for clarity



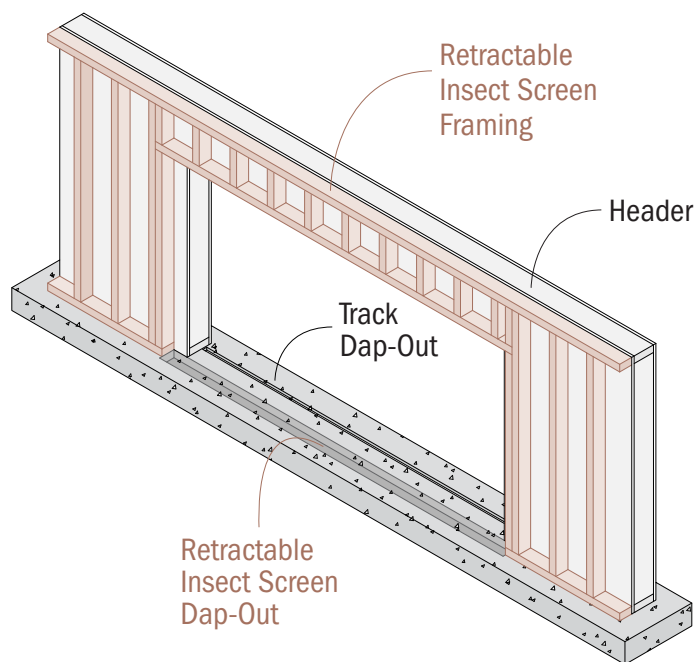
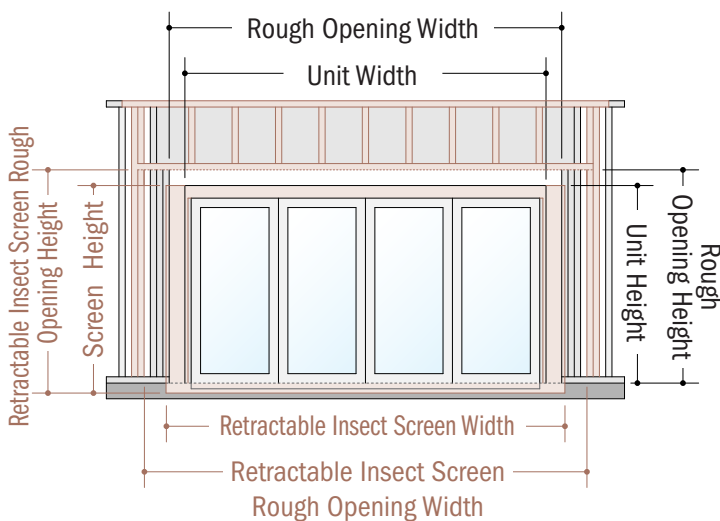
INTERIOR

ON-FLOOR DRAINAGE SILL ON-FLOOR DRAINAGE SILL with RAISED THRESHOLD

Wood or Concrete

IMPORTANT

- See the **Installation Site Specifications** for header requirements.



INTERIOR

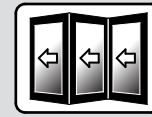
ON-FLOOR LOW THRESHOLD SILL or FLUSH SILL

Concrete*

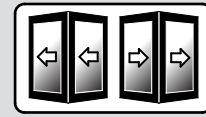
*Folding Outswing Doors with On-Floor Low-Threshold or Flush sill options with Retractable Insect Screens are not recommended for wood floor construction.

Interior Trim Options

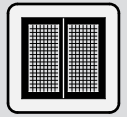
One-Direction and Two-Direction Panel Operation with Retractable Insect Screen



FOLDING DOOR
ONE-DIRECTION



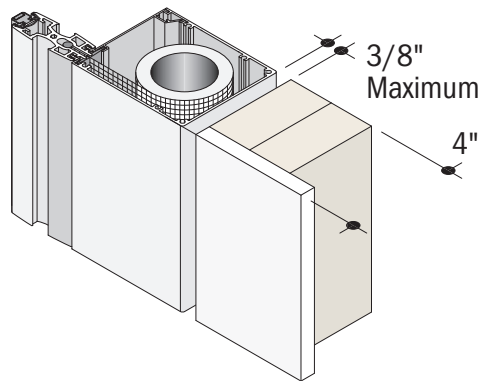
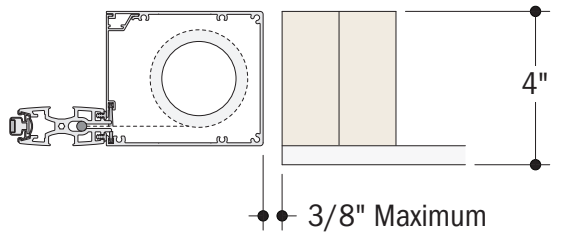
FOLDING DOOR
TWO-DIRECTION



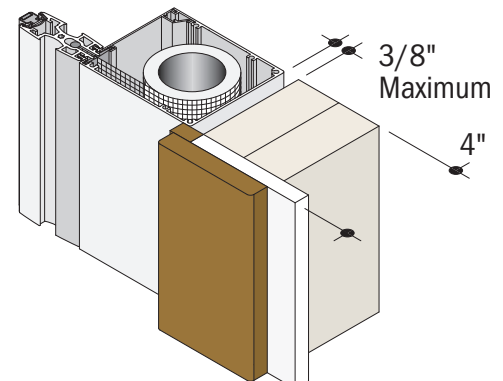
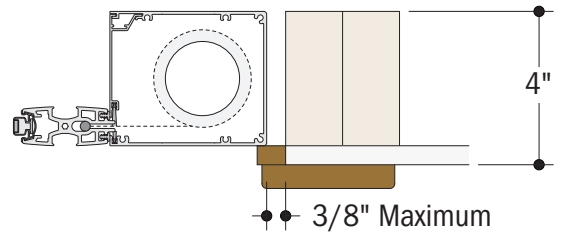
RETRACTABLE
SCREEN

NOTICE

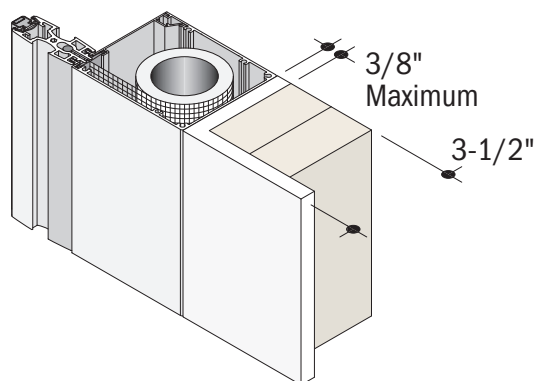
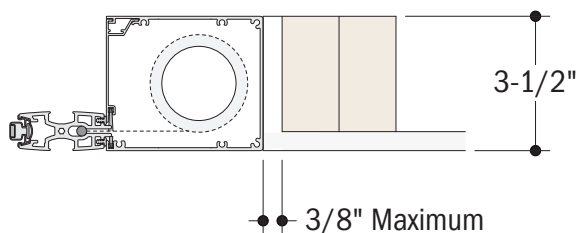
- **DO NOT** fasten trim and/or finishing components to the retractable insect screen frame. Doing so will result in product or property damage and could affect operation and product performance. Trim removal for the retractable screen could be required for servicing.



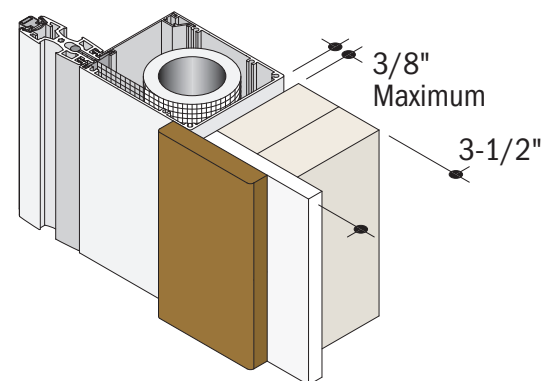
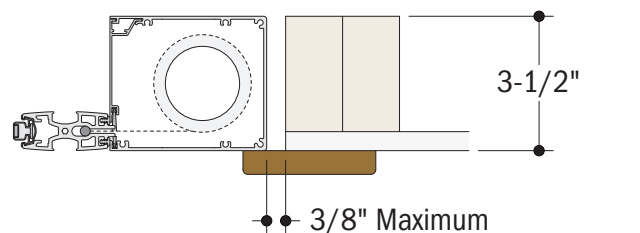
UNTRIMMED POCKET WALL



EXTENSION JAMB with CASING



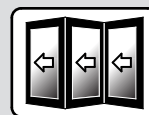
DRYWALL RETURN



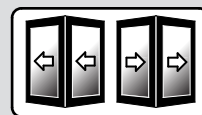
FLUSH DRYWALL with CASING

Interior Trim Options (continued)

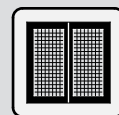
One-Direction and Two-Direction Panel Operation with Retractable Insect Screen



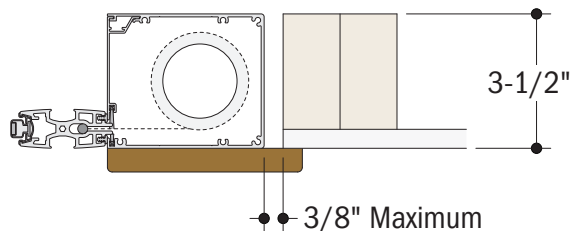
FOLDING DOOR
ONE-DIRECTION



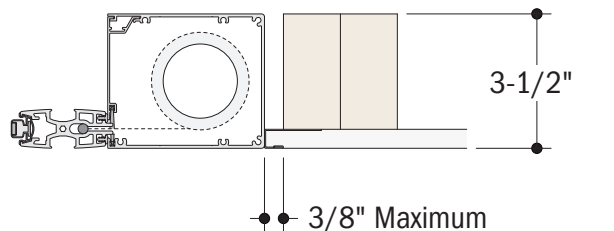
FOLDING DOOR
TWO-DIRECTION



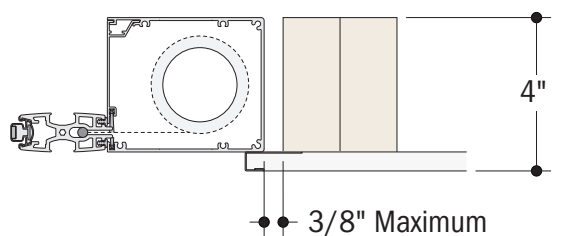
RETRACTABLE
SCREEN



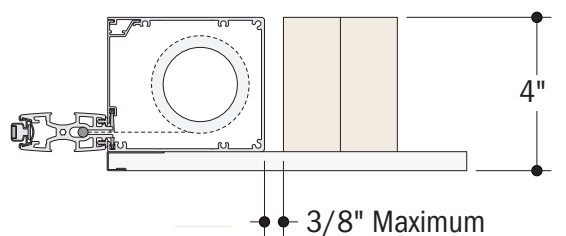
FLUSH DRYWALL with CASING



FLUSH DRYWALL



OVERLAPPED DRYWALL RETURN



FULL OVERLAP DRYWALL RETURN