

## STATELY WALLS OF LIGHT

Blur the lines between indoors and out with Folding outswing doors, part of the Andersen® Architectural Collection. When closed, they are a stately wall of light and when open, they fold, virtually out of sight. Contemporary and traditional style options make them ideal for nearly any home design.

### KEY FEATURES

- 2- to 16-panel configurations available
- Doors can be built to open from the left, right or center
- Multi-point locking system secures the door firmly
- Top hung system allows for easy operation
- Optional retractable insect screen\*
- PG40 (DP +40/-40 psf) for sizes up to 24' wide and 8' tall with the on-floor drainage sill option\*\*
- PG30 (DP +30/-30 psf) for sizes up to 24' wide and 10' tall with the on-floor drainage sill option\*\*
- Maximum weight per panel with Low-E4®, SmartSun™ or Sun glass is 250 lbs per panel†

### FINISH OPTIONS

#### Exterior Options:

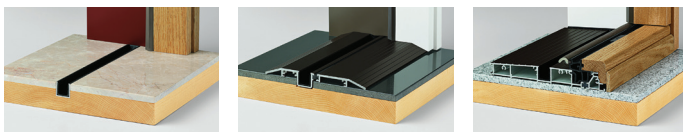
- 50 standard color options and custom colors available
- Seven anodized finishes
- Standard AAMA 2605 finish

#### Interior Options:

- Wood species common options include: pine, maple, oak, cherry, mahogany,†† vertical grain Douglas fir, alder, walnut, mixed grain Douglas fir, hickory and white oak
- 14 standard interior paint options available on pine. Custom colors available
- Three interior paint colors available on maple: black, dark bronze and anodized silver



### SILL OPTIONS



Flush Sill in Bronze

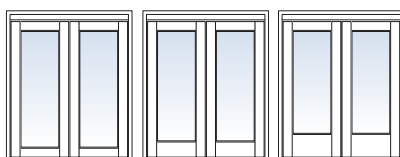
On-Floor Low-Threshold Sill in Aluminum or Bronze

On-Floor Drainage Sill in Bronze or Gray (PG40/30 rated)\*\*

### TRADITIONAL PANEL OPTIONS

- Panel profile options include 4 1/16" stiles with 4 1/16", 8" or 12" bottom rail heights
- Built to fit openings up to 48' wide by 10' tall
- Maximum panel width is 39"
- 1 3/4" panel thickness
- Standard flush shoot bolt hardware available in matte black and satin stainless steel

#### Traditional Panels



4 1/16" Bottom Rail

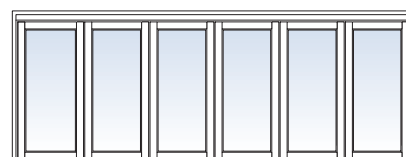
8" Bottom Rail

12" Bottom Rail



Flush Shoot Bolt

#### Contemporary Panels



3 1/16" Stiles and Rails



Concealed Shoot Bolt

### CONTEMPORARY PANEL OPTIONS

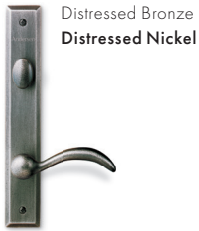
- 3 1/16" panel profile on all sides
- Built to fit openings up to 48' wide by 10' tall
- Maximum panel width is 48"
- 2 1/4" panel thickness
- Standard concealed shoot bolt hardware available in brushed stainless steel or bronze stainless steel

\*Folding door insect screens are available for purchase through an authorized Andersen dealer. \*\*Performance rating: Class SP-PG30 size tested 159" x 119.5", for a door with standard sill. Class SP-PG40 size tested 159" x 95.5", for a door with standard sill. †Verify the structural integrity of the header such that maximum deflection with live and dead loads is limited to lesser of L/750 of the span and 1/4". ††Actual wood species is either Sapele or Sipo, both non-endangered species grown in Africa, with color and characteristics similar to Central American mahoganies.

# FOLDING DOORS

## HARDWARE\*

### YUMA®



Distressed Bronze  
Distressed Nickel

### ENCINO®



Distressed Bronze  
Distressed Nickel

### NEWBURY®



Antique Brass  
Bright Brass  
Oil Rubbed Bronze  
Satin Nickel

### ANVERS®



Bright Brass  
Oil Rubbed Bronze  
Satin Nickel

### ALBANY



Black Stone  
White

### TRIBECA®

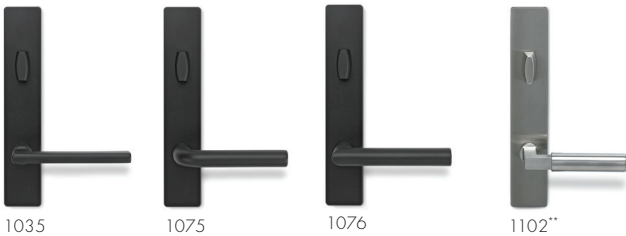


Black Stone  
White

Bold name denotes finish shown.

### FSB®

Durable FSB hardware features clean lines and a sleek finish for a thoroughly modern look. Choose from a black anodized aluminum or satin stainless steel finish.



1035

1075

1076

1102\*\*

### Yale® Assure Lock®†



The Yale Assure Lock allows you to monitor, lock and unlock your door from anywhere. Choose from black, satin nickel or white finishes.

\*Hardware sold separately.

\*\*FSB style 1102 is not available in black anodized aluminum.

†Available on select Andersen® hinged patio doors, see your Andersen supplier for details.

Tribeca and Albany hardware are zinc die cast with powder-coat durable finish. Yuma, Encino, Newbury and Anvers are solid forged brass. FSB is stainless steel or aluminum. Distressed bronze and oil rubbed bronze are "living" finishes that will change with time and use. Bright brass and satin nickel finishes feature a 10-year limited warranty.

## PERFORMANCE

	Traditional Alum-Clad Wood	Traditional Alum-Clad Wood	Traditional Alum-Clad Wood	Traditional Alum-Clad Wood	Contemporary Alum-Clad Wood	Contemporary Alum-Clad Wood
Configuration	1L3R <sup>1</sup>	2L2R	1L3R <sup>1</sup> k	2L2R	3L1R <sup>1</sup>	3L1R <sup>1</sup>
AAMA/WEMA/CSA 101/IS2/A440-08 AND -11	Class CW PG40 <sup>2</sup> Size Tested 159.8" x 95.5" <sup>3</sup>	Class CW PG40 <sup>2</sup> Size Tested 159.8" x 95.5" <sup>3</sup>	Class CW PG30 <sup>2</sup> Size Tested 159.8" x 95.5" <sup>4</sup>	Class CW PG30 <sup>2</sup> Size Tested 159.8" x 95.5" <sup>4</sup>	Class CW PG40 <sup>2</sup> Size Tested 159.8" x 95.5" <sup>3</sup>	Class CW PG30 <sup>2</sup> Size Tested 159.8" x 95.5" <sup>4</sup>
Design Pressure (DP)	+40/-40	+40/-40	+30/-30	+30/-30	+40/-40	+30/-30
Air Infiltration (CFM/FT <sup>2</sup> )	0.06	0.05	0.06	0.06	0.08	0.08
Water Test Pressure (PSF)	6.0	6.0	4.5	4.5	7.5 <sup>5</sup>	7.5 <sup>5</sup>
Florida Approval FL #14346	Non-Impact	Non-Impact	Non-Impact	Non-Impact	Non-Impact	Non-Impact

- "Performance Grade (PG)" ratings may vary from tested performance ratings for larger or smaller units of a particular type. Some units may not be rated.
- This data is accurate as of October 2020. Due to ongoing product changes, updated test results or new industry standards, this data may change over time.
- Where designated, Andersen products are certified and labeled to the requirements of the Hallmark Certification Program. Actual performance may vary based on variations in manufacturing, shipping, installation, environmental conditions and conditions of use.
- Contact your Andersen supplier for more information.

1 Tested with standard multi-point hardware.

2 Standard on-floor drainage sill must be used for performance ratings.

3 Actual door size tested; certification maximum door size 288" x 95.5".

4 Actual door size tested; certification maximum door size 288" x 119.5".

5 Tested with optional high-profile sill stop. Test value without optional high-profile sill stop is 6.0 PSF.



\*FSB is a registered trademark of Franz Schneider Brakel GmbH & Co.

Yale manufactures and supports the limited warranty for Yale Assure Lock for Andersen patio doors.

"Andersen" and all other marks where denoted are trademarks of Andersen Corporation.

©2022 Andersen Corporation. All rights reserved. 05/22

For more information, visit [andersenwindows.com/foldingdoors](https://andersenwindows.com/foldingdoors)