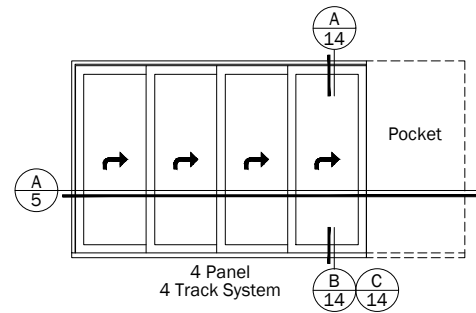
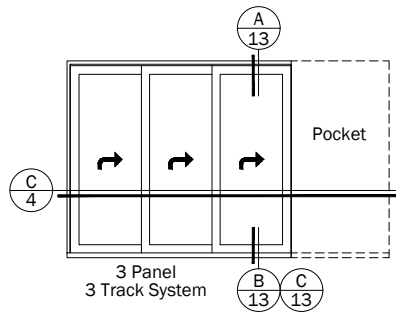
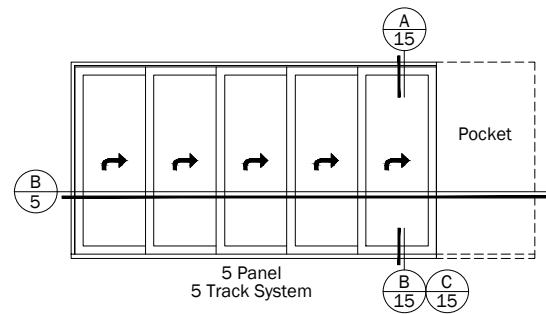
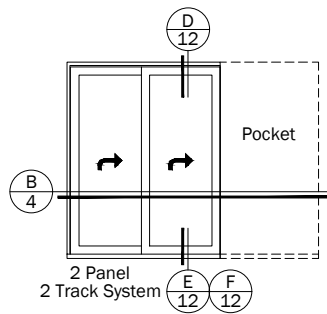
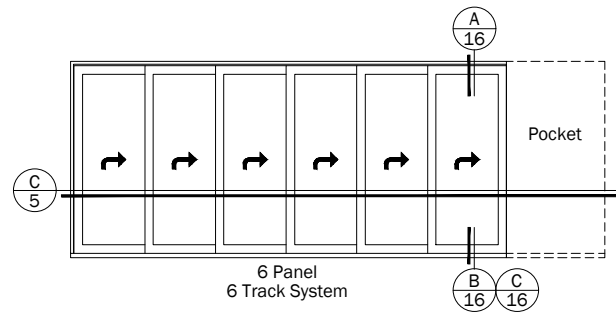
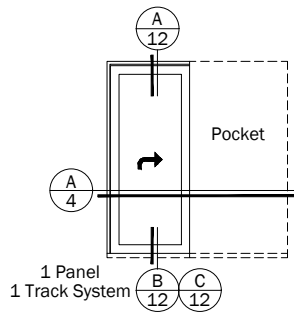


Big Doors

Weiland™ Pocket Liftslide
Aluminum Wood - No Screen



Notes:

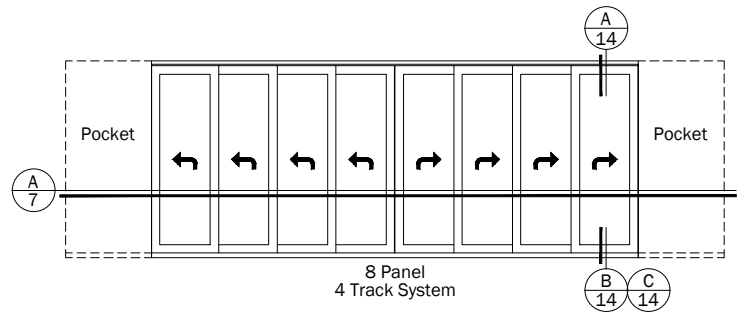
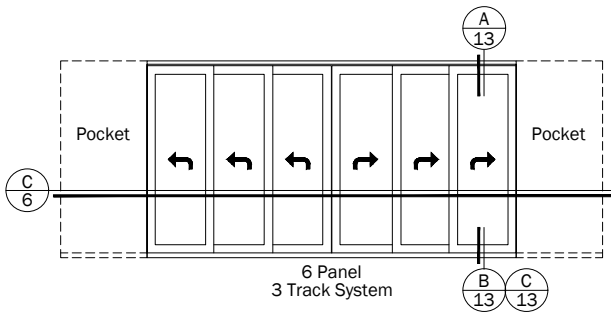
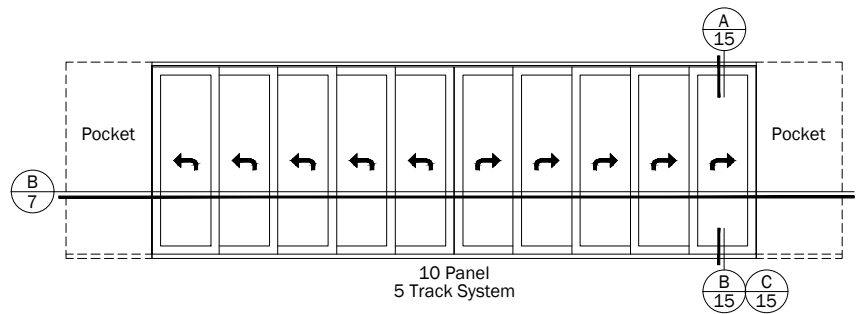
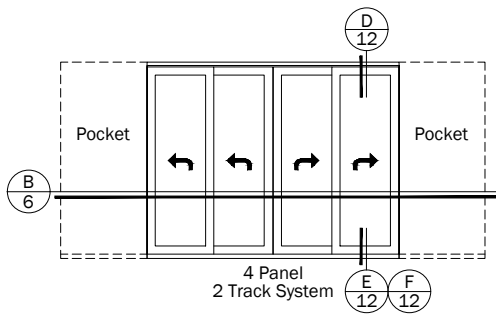
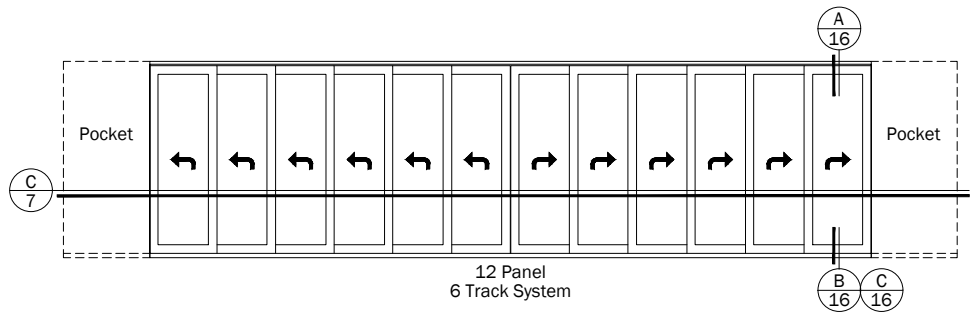
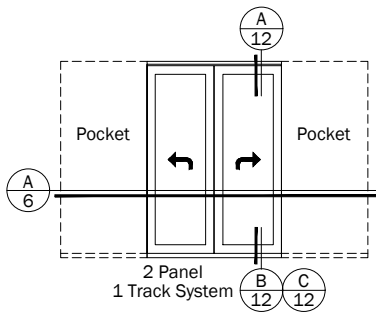
Details have been optimized for use in architectural software and do not match manufacturing specifications.
Dimensions in parentheses are in millimeters.

See Page 22 for Glazing Accessories

Date: 7/11/18
Scale: None

Big Doors

Weiland™ Pocket Liftslide
Aluminum Wood - No Screen



Notes:

Details have been optimized for use in architectural software and do not match manufacturing specifications.
Dimensions in parentheses are in millimeters.

See Page 22 for Glazing Accessories

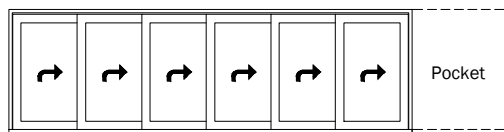
Date: 7/11/18
Scale: None

Big Doors

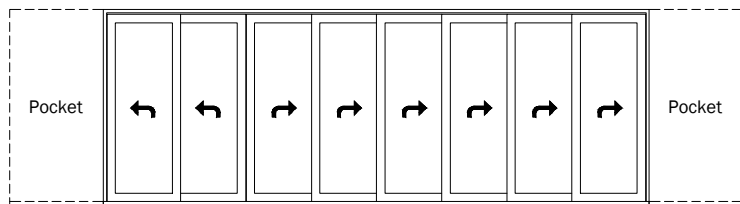
Weiland™ Pocket Liftslide
Aluminum Wood - No Screen



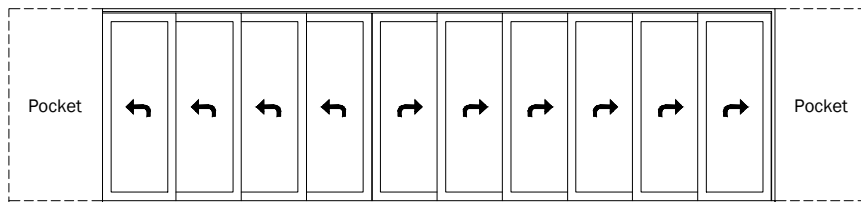
Additional Configurations - Many more configurations available.
Examples shown below are just the beginning of the possibilities.
Contact your local Andersen supplier for additional information.



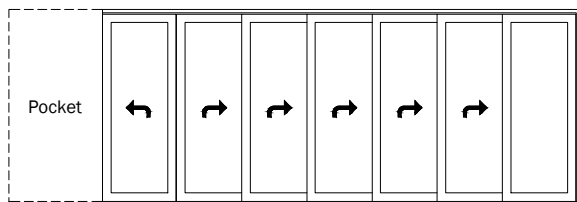
Window Height
Configurations



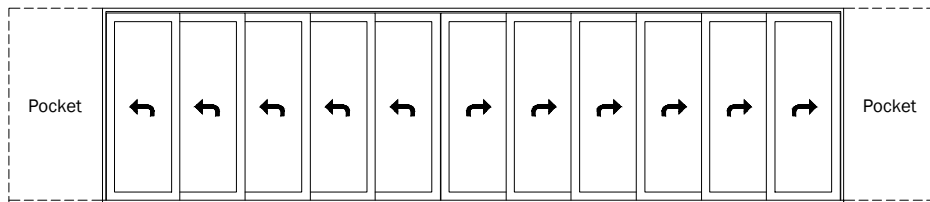
8 Panel
6 Track System



10 Panel
6 Track System



7 Panel
6 Track System



11 Panel
6 Track System

Notes:

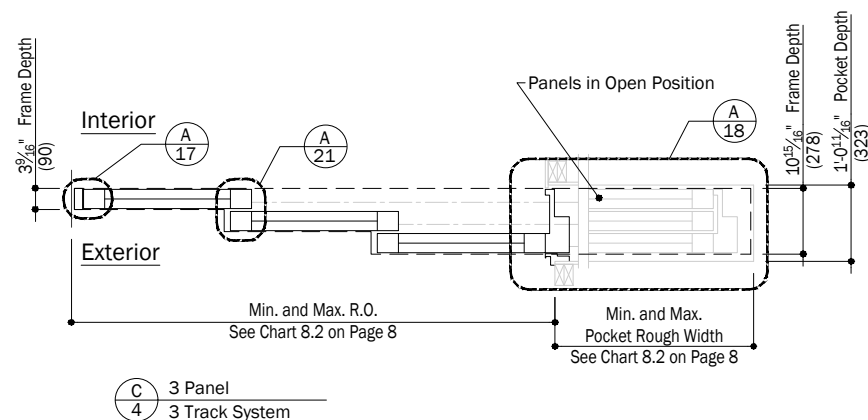
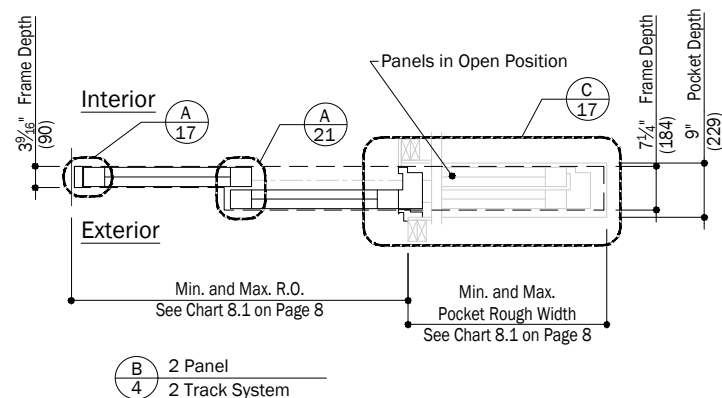
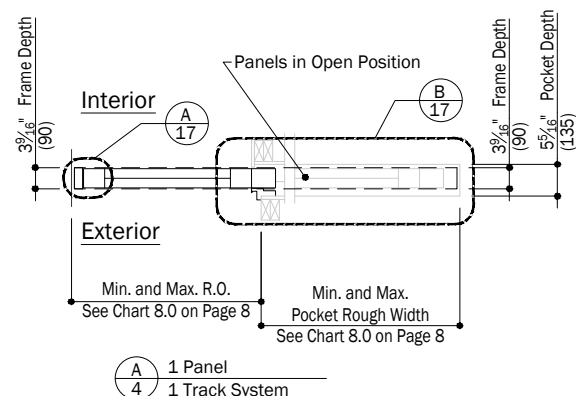
Details have been optimized for use in architectural software and do not match manufacturing specifications.
Dimensions in parentheses are in millimeters.

See Page 22 for Glazing Accessories

Date: 7/11/18
Scale: None

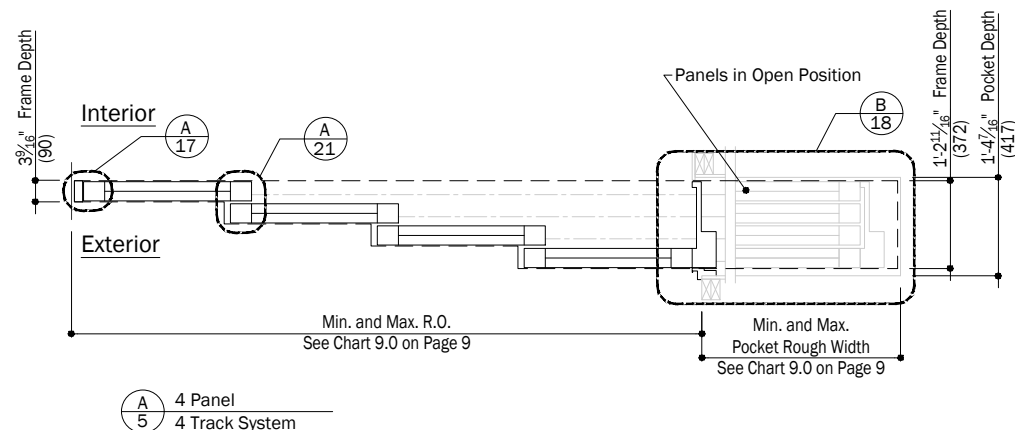
Big Doors

Weiland™ Pocket Liftslide
Aluminum Wood - No Screen



Big Doors

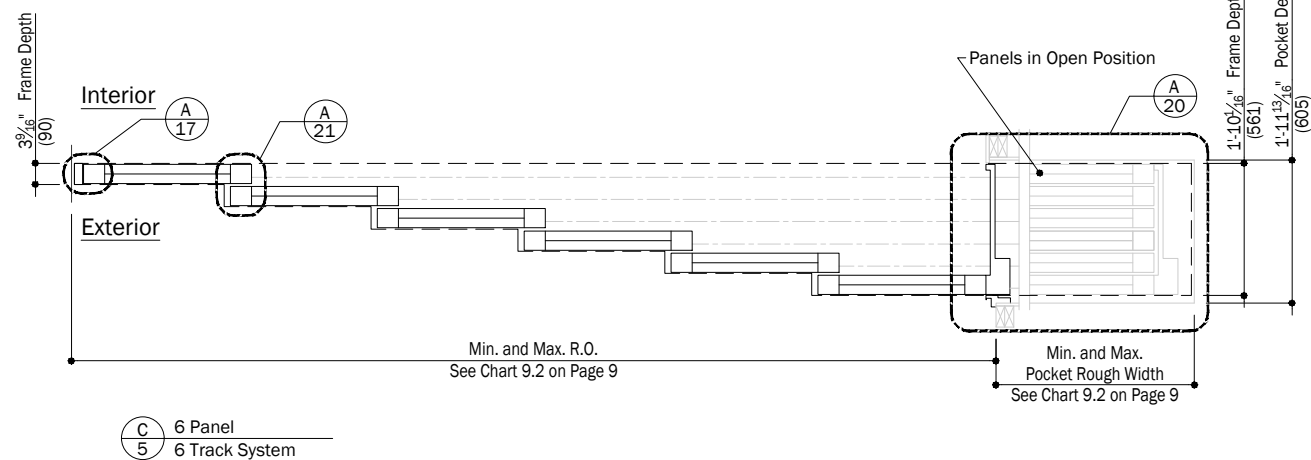
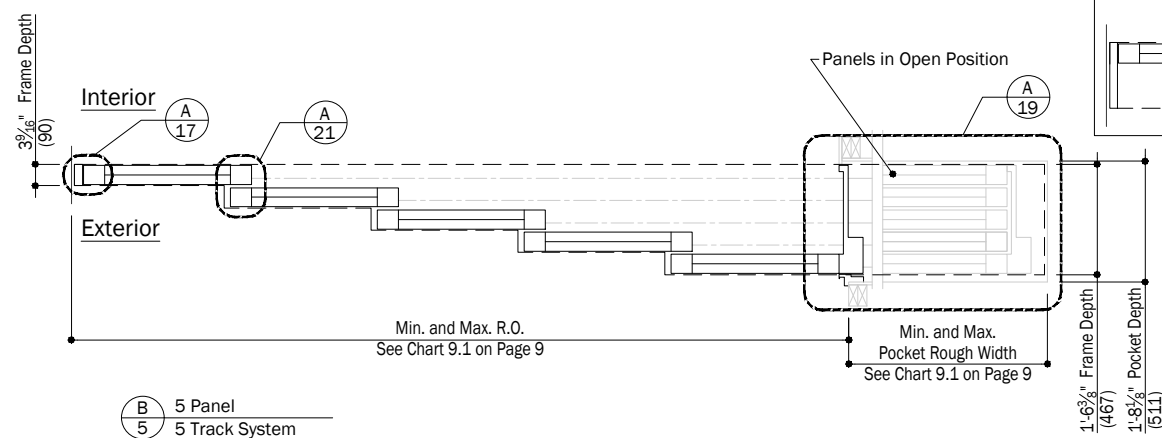
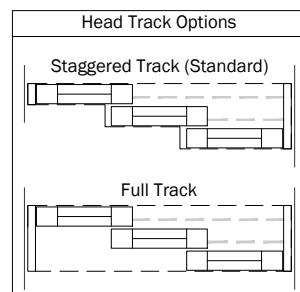
Weiland™ Pocket Liftslide
Aluminum Wood - No Screen



Line Types	
---	Perimeter of head jamb
...	Sill tracks
—	Panel and jamb outline
—	Rough opening

IMPORTANT

For more detailed information pertaining to product application. See the **Weiland® Liftslide Site Prep Guide.**



Notes:

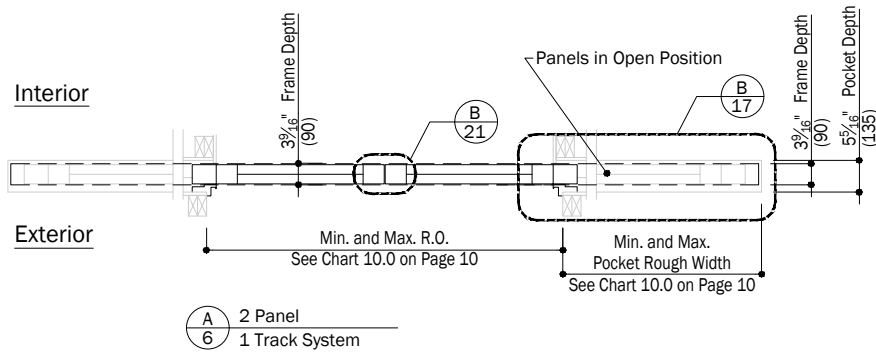
Details have been optimized for use in architectural software and do not match manufacturing specifications. Dimensions in parentheses are in millimeters.

See Page 22 for Glazing Accessories

Date: 7/11/18
Scale: 3/8" (10) = 1' (305)

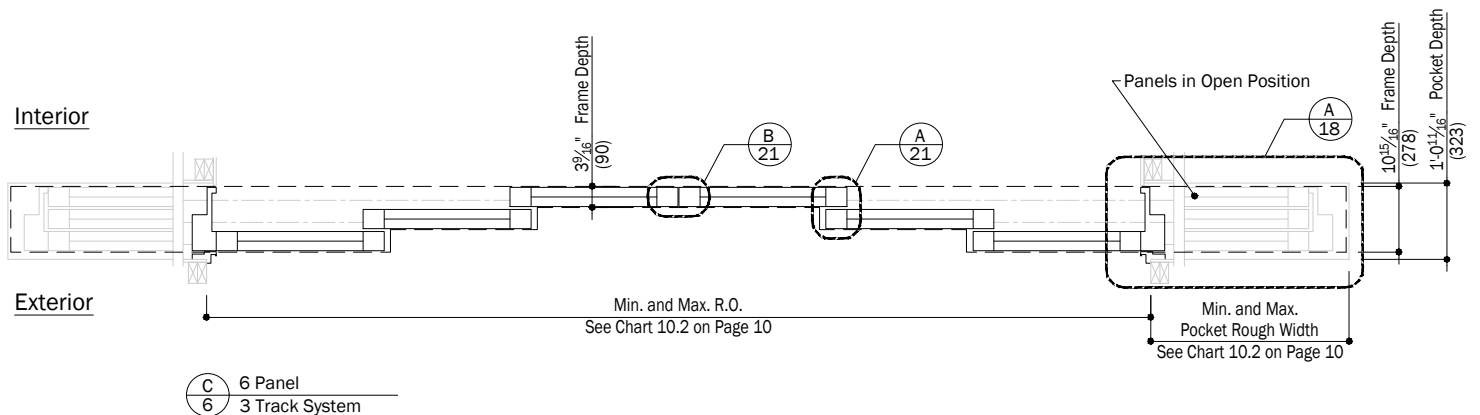
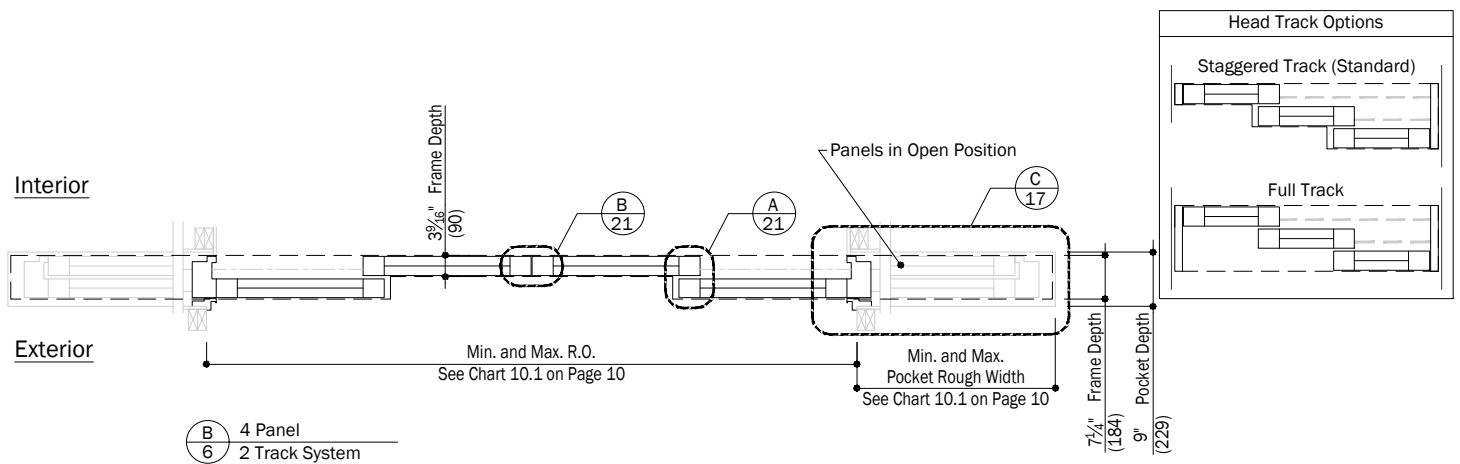
Big Doors

Weiland™ Pocket Liftslide
Aluminum Wood - No Screen



Line Types	
---	Perimeter of head jamb
---	Sill tracks
---	Panel and jamb outline
---	Rough opening

IMPORTANT
For more detailed information pertaining to product application. See the Weiland® Liftslide Site Prep Guide.



Notes:

Details have been optimized for use in architectural software and do not match manufacturing specifications. Dimensions in parentheses are in millimeters.

See Page 22 for Glazing Accessories

Date: 7/11/18
Scale: 3/8" (10) = 1' (305)

Big Doors

Weiland™ Pocket Liftslide
Aluminum Wood - No Screen

Line Types

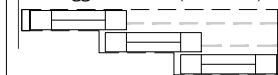
---	Perimeter of head jamb
---	Sill tracks
---	Panel and jamb outline
---	Rough opening

IMPORTANT

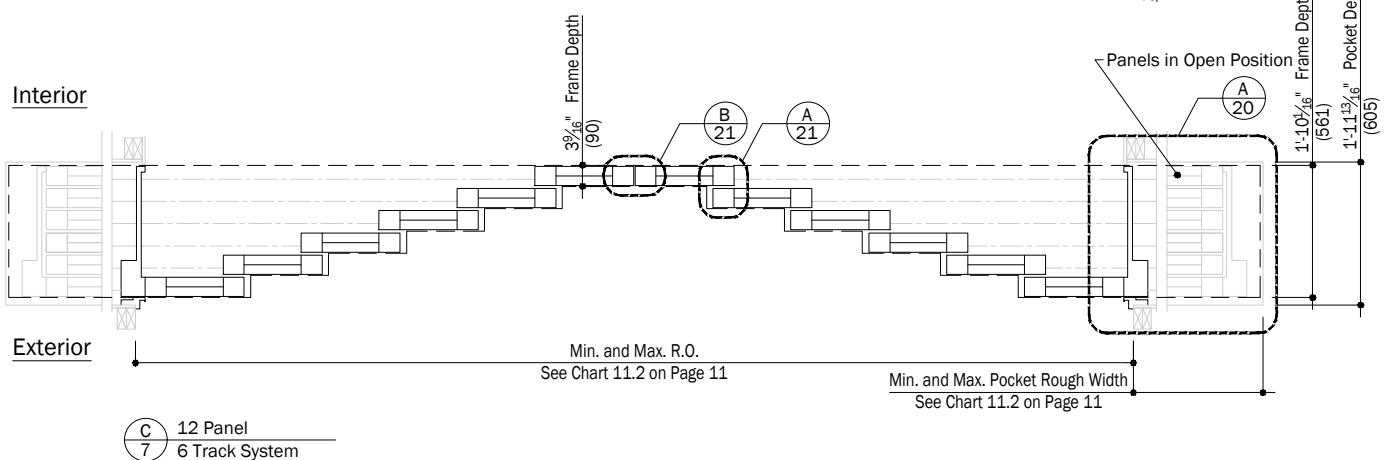
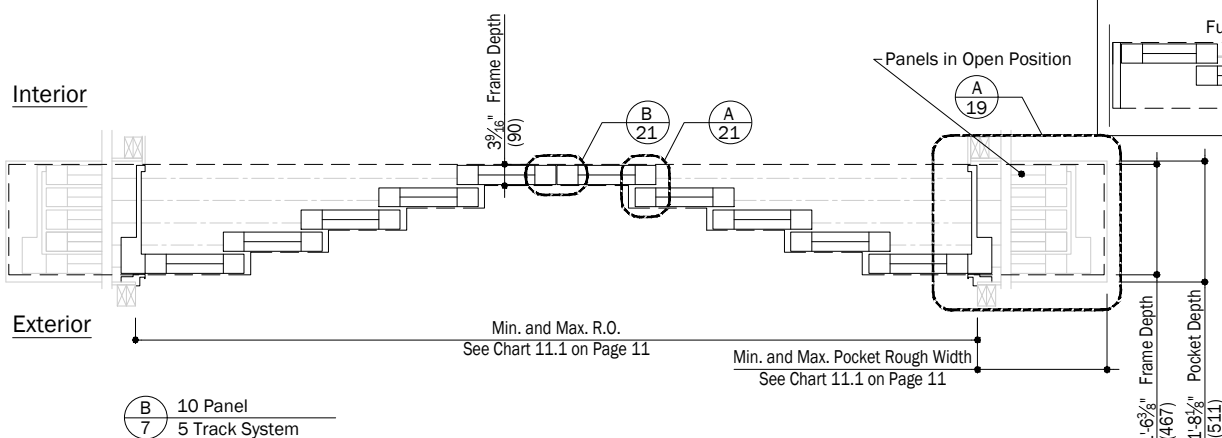
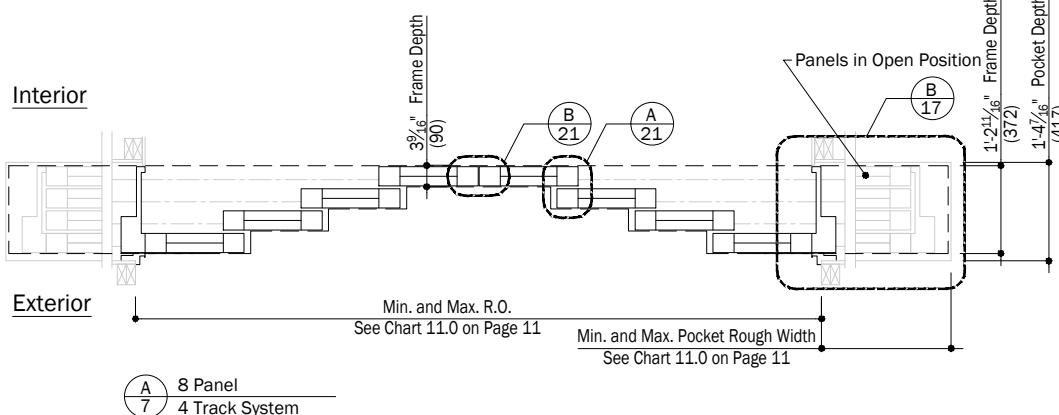
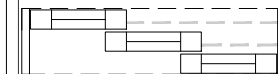
For more detailed information pertaining to product application. See the **Weiland® Liftslide Site Prep Guide.**

Head Track Options

Staggered Track (Standard)



Full Track



Notes:

Details have been optimized for use in architectural software and do not match manufacturing specifications. Dimensions in parentheses are in millimeters.

See Page 22 for Glazing Accessories

Date: 7/11/18
Scale: 3/8" (10) = 1' (305)

Chart 8.0			One-Directional - One Panel									
Frame Depth = 3 5/16", Pocket Depth = 5 5/16"												
Panel Height	R.O. Height	Top of F.F. to Bottom of Header	Minimum Width		Maximum Width							
			R.O.	Pocket R.O.	R.O.	Pocket R.O.	R.O.	Pocket R.O.	R.O.	Pocket R.O.		
			Rated				Not Rated					
Without Intermediate Stile							With Intermediate Stile					
Contact local Andersen supplier												
< 6'-6"	6'-10 3/4"	6'-8 7/16"	2'-5 5/8"	2'-7 1/8"	7'-3 5/8"	7'-5 1/8"	12'-3 5/8"	12'-5 1/8"	Contact local Andersen supplier	Contact local Andersen supplier		
7'-0"	7'-4 3/4"	7'-2 7/16"	2'-7 5/8"	2'-9 1/8"			7'-3 5/8"	7'-5 1/8"				
7'-6"	7'-10 3/4"	7'-8 7/16"	2'-9 5/8"	2'-11 1/8"								
8'-0"	8'-4 3/4"	8'-2 7/16"	2'-11 5/8"	3'-1 1/8"								
8'-6"	8'-10 3/4"	8'-8 7/16"	3'-1 5/8"	3'-3 1/8"								
9'-0"	9'-4 3/4"	9'-2 7/16"	3'-3 5/8"	3'-5 1/8"							6'-9 5/8"	6'-11 1/8"
9'-6"	9'-10 3/4"	9'-8 7/16"	3'-5 5/8"	3'-7 1/8"							6'-5 5/8"	6'-7 1/8"
10'-0"	10'-4 3/4"	10'-2 7/16"	3'-7 5/8"	3'-9 1/8"							6'-3 5/8"	6'-5 1/8"
10'-6"	10'-10 3/4"	10'-8 7/16"	3'-9 5/8"	3'-11 1/8"							5'-11 5/8"	6'-1 1/8"
11'-0"	11'-4 3/4"	11'-2 7/16"	3'-11 5/8"	4'-1 1/8"							5'-8 5/8"	5'-10 1/8"
11'-6"	11'-10 3/4"	11'-8 7/16"	4'-1 5/8"	4'-3 1/8"	5'-5 5/8"	5'-7 1/8"						
12'-0"	12'-4 3/4"	12'-2 7/16"	4'-3 5/8"	4'-5 1/8"	5'-3 5/8"	5'-5 1/8"						
> 12'-0"	Contact local Andersen supplier											

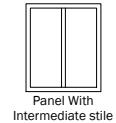
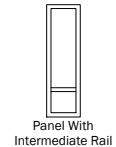
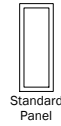


Chart 8.1			One-Directional - Two Panel							
Lock Jamb Depth = 3 9/16", O.A. Frame Depth = 7 1/4", Pocket Depth = 9"										
Panel Height	R.O. Height	Top of F.F. to Bottom of Header	Minimum Width		Maximum Width					
			R.O.	Pocket R.O.	R.O.	Pocket R.O.	R.O.	Pocket R.O.	R.O.	Pocket R.O.
			Rated				Not Rated			
			Without Intermediate Stile						With Intermediate Stile	
< 6'-6"	Contact local Andersen supplier									
6'-6"	6'-10 3/4"	6'-8 7/16"	4'-4 1/8"	2'-7 1/8"	14'-0 1/8"	7'-5 1/8"	24'-0 1/8"	12'-5 1/8"	Contact local Andersen supplier	Contact local Andersen supplier
7'-0"	7'-4 3/4"	7'-2 7/16"	4'-8 1/8"	2'-9 1/8"			14'-0 1/8"	7'-5 1/8"		
7'-6"	7'-10 3/4"	7'-8 7/16"	5'-0 1/8"	2'-11 1/8"						
8'-0"	8'-4 3/4"	8'-2 7/16"	5'-4 1/8"	3'-1 1/8"						
8'-6"	8'-10 3/4"	8'-8 7/16"	5'-8 1/8"	3'-3 1/8"						
9'-0"	9'-4 3/4"	9'-2 7/16"	6'-0 1/8"	3'-5 1/8"	13'-0 1/8"	6'-11 1/8"	14'-0 1/8"	7'-5 1/8"		
9'-6"	9'-10 3/4"	9'-8 7/16"	6'-4 1/8"	3'-7 1/8"	12'-4 1/8"	6'-7 1/8"				
10'-0"	10'-4 3/4"	10'-2 7/16"	6'-8 1/8"	3'-9 1/8"	12'-0 1/8"	6'-5 1/8"				
10'-6"	10'-10 3/4"	10'-8 7/16"	7'-0 1/8"	3'-11 1/8"	11'-4 1/8"	6'-1 1/8"				
11'-0"	11'-4 3/4"	11'-2 7/16"	7'-4 1/8"	4'-1 1/8"	10'-10 1/8"	5'-10 1/8"				
11'-6"	11'-10 3/4"	11'-8 7/16"	7'-8 1/8"	4'-3 1/8"	10'-4 1/8"	5'-7 1/8"	14'-0 1/8"	7'-5 1/8"		
12'-0"	12'-4 3/4"	12'-2 7/16"	8'-0 1/8"	4'-5 1/8"	10'-0 1/8"	5'-5 1/8"				
> 12'-0"	Contact local Andersen supplier									

Chart 8.2		One-Directional - Three Panel										
Lock Jamb Depth = 3 ⁹ / ₁₆ " , O.A. Frame Depth = 10 ¹⁵ / ₁₆ " , Pocket Depth = 1'-0 ¹¹ / ₁₆ "												
Panel Height	R.O. Height	Top of F.F. to Bottom of Header	Minimum Width		Maximum Width							
			R.O.	Pocket R.O.	R.O.	Pocket R.O.	R.O.	Pocket R.O.	R.O.	Pocket R.O.		
			Rated				Not Rated					
			Without Intermediate Stile						With Intermediate Stile			
< 6'-6"		Contact local Andersen supplier										
6'-6"	6'-10 ³ / ₄ "	6'-8 ⁷ / ₁₆ "	6'-2 ⁵ / ₈ "	2'-7 ¹ / ₈ "	20'-8 ⁵ / ₈ "	7'-5 ¹ / ₈ "	35'-8 ⁵ / ₈ "	12'-5 ¹ / ₈ "	Contact local Andersen supplier	Contact local Andersen supplier		
7'-0"	7'-4 ³ / ₄ "	7'-2 ⁷ / ₁₆ "	6'-8 ⁵ / ₈ "	2'-9 ¹ / ₈ "			20'-8 ⁵ / ₈ "	7'-5 ¹ / ₈ "				
7'-6"	7'-10 ³ / ₄ "	7'-8 ⁷ / ₁₆ "	7'-2 ⁵ / ₈ "	2'-11 ¹ / ₈ "								
8'-0"	8'-4 ³ / ₄ "	8'-2 ⁷ / ₁₆ "	7'-8 ⁵ / ₈ "	3'-1 ¹ / ₈ "								
8'-6"	8'-10 ³ / ₄ "	8'-8 ⁷ / ₁₆ "	8'-2 ⁵ / ₈ "	3'-3 ¹ / ₈ "								
9'-0"	9'-4 ³ / ₄ "	9'-2 ⁷ / ₁₆ "	8'-8 ⁵ / ₈ "	3'-5 ¹ / ₈ "	19'-2 ⁵ / ₈ "	6'-11 ¹ / ₈ "	20'-8 ⁵ / ₈ "	7'-5 ¹ / ₈ "				
9'-6"	9'-10 ³ / ₄ "	9'-8 ⁷ / ₁₆ "	9'-2 ⁵ / ₈ "	3'-7 ¹ / ₈ "	18'-2 ⁵ / ₈ "	6'-7 ¹ / ₈ "						
10'-0"	10'-4 ³ / ₄ "	10'-2 ⁷ / ₁₆ "	9'-8 ⁵ / ₈ "	3'-9 ¹ / ₈ "	17'-8 ⁵ / ₈ "	6'-5 ¹ / ₈ "						
10'-6"	10'-10 ³ / ₄ "	10'-8 ⁷ / ₁₆ "	10'-2 ⁵ / ₈ "	3'-11 ¹ / ₈ "	16'-8 ⁵ / ₈ "	6'-1 ¹ / ₈ "						
11'-0"	11'-4 ³ / ₄ "	11'-2 ⁷ / ₁₆ "	10'-8 ⁵ / ₈ "	4'-1 ¹ / ₈ "	15'-11 ⁵ / ₈ "	5'-10 ¹ / ₈ "						
11'-6"	11'-10 ³ / ₄ "	11'-8 ⁷ / ₁₆ "	11'-2 ⁵ / ₈ "	4'-3 ¹ / ₈ "	15'-2 ⁵ / ₈ "	5'-7 ¹ / ₈ "	20'-8 ⁵ / ₈ "	7'-5 ¹ / ₈ "				
12'-0"	12'-4 ³ / ₄ "	12'-2 ⁷ / ₁₆ "	11'-8 ⁵ / ₈ "	4'-5 ¹ / ₈ "	14'-8 ⁵ / ₈ "	5'-5 ¹ / ₈ "						
> 12'-0"		Contact local Andersen supplier										

Notes:

Details have been optimized for use in architectural software and do not match manufacturing specifications.
Dimensions in parentheses are in millimeters.

See Page 22 for Glazing Accessories

Date: 7/11/18
Scale: None

Chart 9.0			One-Directional - Four Panel								
Lock Jamb Depth = 3 9/16", O.A. Frame Depth = 1'-2 11/16", Pocket Depth = 1'-4 7/16"											
Panel Height	R.O. Height	Top of F.F. to Bottom of Header	Minimum Width		Maximum Width						
			R.O.	Pocket R.O.	R.O.	Pocket R.O.	R.O.	Pocket R.O.	R.O.	Pocket R.O.	
			Rated			Not Rated					
			Without Intermediate Stile						With Intermediate Stile		
Contact local Andersen supplier											
< 6'-6"											
6'-6"	6'-10 3/4"	6'-8 7/16"	8'-1 1/8"	2'-7 1/8"	27'-5 1/8"	7'-5 1/8"	47'-3 1/8"	12'-5 1/8"	Contact local Andersen supplier	Contact local Andersen supplier	
7'-0"	7'-4 3/4"	7'-2 7/16"	8'-9 1/8"	2'-9 1/8"			27'-5 1/8"	7'-5 1/8"			
7'-6"	7'-10 3/4"	7'-8 7/16"	9'-5 1/8"	2'-11 1/8"							
8'-0"	8'-4 3/4"	8'-2 7/16"	10'-1 1/8"	3'-1 1/8"							
8'-6"	8'-10 3/4"	8'-8 7/16"	10'-9 1/8"	3'-3 1/8"							
9'-0"	9'-4 3/4"	9'-2 7/16"	11'-5 1/8"	3'-5 1/8"	25'-5 1/8"	6'-11 1/8"					
9'-6"	9'-10 3/4"	9'-8 7/16"	12'-1 1/8"	3'-7 1/8"	24'-1 1/8"	6'-7 1/8"					
10'-0"	10'-4 3/4"	10'-2 7/16"	12'-9 1/8"	3'-9 1/8"	23'-5 1/8"	6'-5 1/8"					
10'-6"	10'-10 3/4"	10'-8 7/16"	13'-5 1/8"	3'-11 1/8"	22'-1 1/8"	6'-1 1/8"					
11'-0"	11'-4 3/4"	11'-2 7/16"	14'-1 1/8"	4'-1 1/8"	21'-1 1/8"	5'-10 1/8"					
11'-6"	11'-10 3/4"	11'-8 7/16"	14'-9 1/8"	4'-3 1/8"	20'-1 1/8"	5'-7 1/8"					
12'-0"	12'-4 3/4"	12'-2 7/16"	15'-5 1/8"	4'-5 1/8"	19'-3 1/8"	5'-5 1/8"					
> 12'-0"					Contact local Andersen supplier						

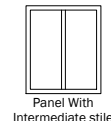
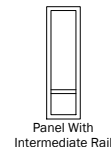
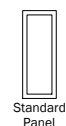


Chart 9.1		One-Directional - Five Panel									
Lock Jamb Depth = 3 9/16", O.A. Frame Depth = 1'-6 3/8", Pocket Depth = 1'-8 1/8"											
Panel Height	R.O. Height	Top of F.F. to Bottom of Header	Minimum Width		Maximum Width						
			R.O.	Pocket R.O.	R.O.	Pocket R.O.	R.O.	Pocket R.O.	R.O.	Pocket R.O.	
			Rated				Not Rated				
			Without Intermediate Stile						With Intermediate Stile		
Contact local Andersen supplier											
< 6'-6"											
6'-6"	6'-10 3/4"	6'-8 7/16"	9'-11 5/8"	2'-7 1/8"	34'-1 5/8"	7'-5 1/8"	59'-1 5/8"	12'-5 1/8"	Contact local Andersen supplier	Contact local Andersen supplier	
7'-0"	7'-4 3/4"	7'-2 7/16"	10'-9 5/8"	2'-9 1/8"			34'-1 5/8"	7'-5 1/8"			
7'-6"	7'-10 3/4"	7'-8 7/16"	11'-7 5/8"	2'-11 1/8"							
8'-0"	8'-4 3/4"	8'-2 7/16"	12'-5 5/8"	3'-1 1/8"							
8'-6"	8'-10 3/4"	8'-8 7/16"	13'-3 5/8"	3'-3 1/8"							
9'-0"	9'-4 3/4"	9'-2 7/16"	14'-1 5/8"	3'-5 1/8"	31'-7 5/8"	6'-11 1/8"					
9'-6"	9'-10 3/4"	9'-8 7/16"	14'-11 5/8"	3'-7 1/8"	29'-11 5/8"	6'-7 1/8"					
10'-0"	10'-4 3/4"	10'-2 7/16"	15'-9 5/8"	3'-9 1/8"	29'-1 5/8"	6'-5 1/8"					
10'-6"	10'-10 3/4"	10'-8 7/16"	16'-7 5/8"	3'-11 1/8"	27'-5 5/8"	6'-1 1/8"					
11'-0"	11'-4 3/4"	11'-2 7/16"	17'-5 5/8"	4'-1 1/8"	26'-2 5/8"	5'-10 1/8"					
11'-6"	11'-10 3/4"	11'-8 7/16"	18'-3 5/8"	4'-3 1/8"	24'-11 5/8"	5'-7 1/8"					
12'-0"	12'-4 3/4"	12'-2 7/16"	19'-1 5/8"	4'-5 1/8"	24'-1 5/8"	5'-5 1/8"					
> 12'-0"					Contact local Andersen supplier						

Chart 9.2		One-Directional - Six Panel										
Lock Jamb Depth = 3 9/16", O.A. Frame Depth = 1'-10 1/16", Pocket Depth = 1'-11 13/16"												
Panel Height	R.O. Height	Top of F.F. to Bottom of Header	Minimum Width		Maximum Width							
			R.O.	Pocket R.O.	R.O.	Pocket R.O.	R.O.	Pocket R.O.	R.O.	Pocket R.O.		
			Rated		Not Rated							
			Without Intermediate Stile						With Intermediate Stile			
Contact local Andersen supplier												
< 6'-6"												
6'-6"	6'-10 3/4"	6'-8 7/16"	11'-10 1/8"	2'-7 1/8"	40'-10 1/8"	7'-5 1/8"	70'-10 1/8"	12'-5 1/8"	Contact local Andersen supplier	Contact local Andersen supplier		
7'-0"	7'-4 3/4"	7'-2 7/16"	12'-10 1/8"	2'-9 1/8"			40'-10 1/8"	7'-5 1/8"				
7'-6"	7'-10 3/4"	7'-8 7/16"	13'-10 1/8"	2'-11 1/8"								
8'-0"	8'-4 3/4"	8'-2 7/16"	14'-10 1/8"	3'-1 1/8"								
8'-6"	8'-10 3/4"	8'-8 7/16"	15'-10 1/8"	3'-3 1/8"								
9'-0"	9'-4 3/4"	9'-2 7/16"	16'-10 1/8"	3'-5 1/8"	37'-10 1/8"	6'-11 1/8"						
9'-6"	9'-10 3/4"	9'-8 7/16"	17'-10 1/8"	3'-7 1/8"	35'-10 1/8"	6'-7 1/8"						
10'-0"	10'-4 3/4"	10'-2 7/16"	18'-10 1/8"	3'-9 1/8"	34'-10 1/8"	6'-5 1/8"						
10'-6"	10'-10 3/4"	10'-8 7/16"	19'-10 1/8"	3'-11 1/8"	32'-10 1/8"	6'-1 1/8"						
11'-0"	11'-4 3/4"	11'-2 7/16"	20'-10 1/8"	4'-1 1/8"	31'-4 1/8"	5'-10 1/8"						
11'-6"	11'-10 3/4"	11'-8 7/16"	21'-10 1/8"	4'-3 1/8"	29'-10 1/8"	5'-7 1/8"						
12'-0"	12'-4 3/4"	12'-2 7/16"	22'-10 1/8"	4'-5 1/8"	28'-10 1/8"	5'-5 1/8"						
> 12'-0"					Contact local Andersen supplier							

Notes:

Details have been optimized for use in architectural software and do not match manufacturing specifications.
Dimensions in parentheses are in millimeters.

See Page 22 for Glazing Accessories

Date: 7/11/18
Scale: None

Chart 10.0			Two-Directional - Two Panel								
Frame Depth = 3 ⁹ / ₁₆ " , Pocket Depth = 5 ⁵ / ₁₆ "											
Panel Height	R.O. Height	Top of F.F. to Bottom of Header	Minimum Width		Maximum Width						
			R.O.	Pocket R.O.	R.O.	Pocket R.O.	R.O.	Pocket R.O.	R.O.	Pocket R.O.	
			Rated			Not Rated					
			Without Intermediate Stile						With Intermediate Stile		
Contact local Andersen supplier											
< 6'-6"	6'-10 ³ / ₄ "	6'-8 ⁷ / ₁₆ "	4'-7 ⁷ / ₁₆ "	2'-7 ¹ / ₈ "	14'-3 ⁷ / ₁₆ "	7'-5 ¹ / ₈ "	24'-3 ⁷ / ₁₆ "	12'-5 ¹ / ₈ "	Contact local Andersen supplier	Contact local Andersen supplier	
7'-0"	7'-4 ³ / ₄ "	7'-2 ⁷ / ₁₆ "	4'-11 ¹ / ₁₆ "	2'-9 ¹ / ₈ "			14'-3 ⁷ / ₁₆ "	7'-5 ¹ / ₈ "			
7'-6"	7'-10 ³ / ₄ "	7'-8 ⁷ / ₁₆ "	5'-3 ⁷ / ₁₆ "	2'-11 ¹ / ₈ "							
8'-0"	8'-4 ³ / ₄ "	8'-2 ⁷ / ₁₆ "	5'-7 ⁷ / ₁₆ "	3'-1 ¹ / ₈ "							
8'-6"	8'-10 ³ / ₄ "	8'-8 ⁷ / ₁₆ "	5'-11 ⁷ / ₁₆ "	3'-3 ³ / ₈ "							
9'-0"	9'-4 ³ / ₄ "	9'-2 ⁷ / ₁₆ "	6'-3 ⁷ / ₁₆ "	3'-5 ¹ / ₈ "	13'-3 ⁷ / ₁₆ "	6'-11 ¹ / ₈ "	14'-3 ⁷ / ₁₆ "	7'-5 ¹ / ₈ "			
9'-6"	9'-10 ³ / ₄ "	9'-8 ⁷ / ₁₆ "	6'-7 ⁷ / ₁₆ "	3'-7 ¹ / ₈ "	12'-7 ⁷ / ₁₆ "	6'-7 ⁷ / ₁₆ "					
10'-0"	10'-4 ³ / ₄ "	10'-2 ⁷ / ₁₆ "	6'-11 ⁷ / ₁₆ "	3'-9 ¹ / ₈ "	12'-3 ⁷ / ₁₆ "	6'-5 ¹ / ₈ "					
10'-6"	10'-10 ³ / ₄ "	10'-8 ⁷ / ₁₆ "	7'-3 ⁷ / ₁₆ "	3'-11 ¹ / ₈ "	11'-7 ⁷ / ₁₆ "	6'-1 ¹ / ₈ "					
11'-0"	11'-4 ³ / ₄ "	11'-2 ⁷ / ₁₆ "	7'-7 ⁷ / ₁₆ "	4'-1 ¹ / ₈ "	11'-1 ⁷ / ₁₆ "	5'-10 ¹ / ₈ "					
11'-6"	11'-10 ³ / ₄ "	11'-8 ⁷ / ₁₆ "	7'-11 ⁷ / ₁₆ "	4'-3 ³ / ₈ "	10'-7 ⁷ / ₁₆ "	5'-7 ¹ / ₈ "					
12'-0"	12'-4 ³ / ₄ "	12'-2 ⁷ / ₁₆ "	8'-3 ⁷ / ₁₆ "	4'-5 ¹ / ₈ "	10'-3 ⁷ / ₁₆ "	5'-5 ¹ / ₈ "					
> 12'-0"	Contact local Andersen supplier										

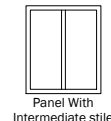
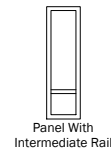
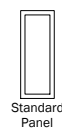


Chart 10.1		Two-Directional - Four Panel										
Head Jamb Depth at Astragal = 3 9/16", O.A. Frame Depth = 7 1/4", Pocket Depth = 9"												
Panel Height	R.O. Height	Top of F.F. to Bottom of Header	Minimum Width		Maximum Width							
			R.O.	Pocket R.O.	R.O.	Pocket R.O.	R.O.	Pocket R.O.	R.O.	Pocket R.O.		
			Rated			Not Rated						
			Without Intermediate Stile						With Intermediate Stile			
< 6'-6"	Contact local Andersen supplier											
6'-6"	6'-10 3/4"	6'-8 7/16"	8'-4 7/16"	2'-7 1/8"	27'-8 7/16"	7'-5 1/8"	47'-6 7/16"	12'-5 1/8"	Contact local Andersen supplier	Contact local Andersen supplier		
7'-0"	7'-4 3/4"	7'-2 7/16"	9'-0 7/16"	2'-9 1/8"			27'-8 7/16"	7'-5 1/8"				
7'-6"	7'-10 3/4"	7'-8 7/16"	9'-8 7/16"	2'-11 1/8"								
8'-0"	8'-4 3/4"	8'-2 7/16"	10'-4 7/16"	3'-1 1/8"								
8'-6"	8'-10 3/4"	8'-8 7/16"	11'-0 7/16"	3'-3 3/8"								
9'-0"	9'-4 3/4"	9'-2 7/16"	11'-8 7/16"	3'-5 1/8"							25'-8 7/16"	6'-11 1/8"
9'-6"	9'-10 3/4"	9'-8 7/16"	12'-4 7/16"	3'-7 1/8"							24'-4 7/16"	6'-7 1/8"
10'-0"	10'-4 3/4"	10'-2 7/16"	13'-0 7/16"	3'-9 1/8"							23'-8 7/16"	6'-5 1/8"
10'-6"	10'-10 3/4"	10'-8 7/16"	13'-8 7/16"	3'-11 1/8"							22'-4 7/16"	6'-1 1/8"
11'-0"	11'-4 3/4"	11'-2 7/16"	14'-4 7/16"	4'-1 1/8"							21'-4 7/16"	5'-10 1/8"
11'-6"	11'-10 3/4"	11'-8 7/16"	15'-0 7/16"	4'-3 3/8"	20'-4 7/16"	5'-7 1/8"						
12'-0"	12'-4 3/4"	12'-2 7/16"	15'-8 7/16"	4'-5 1/8"	19'-6 7/16"	5'-5 1/8"						
> 12'-0"	Contact local Andersen supplier											

Chart 10.2		Two-Directional - Six Panel										
Head Jamb Depth at Astragal = 3 9/16", O.A. Frame Depth = 10 15/16", Pocket Depth = 1'-0 11/16"												
Panel Height	R.O. Height	Top of F.F. to Bottom of Header	Minimum Width		Maximum Width							
			R.O.	Pocket R.O.	R.O.	Pocket R.O.	R.O.	Pocket R.O.	R.O.	Pocket R.O.		
			Rated				Not Rated					
			Without Intermediate Stile						With Intermediate Stile			
< 6'-6"		Contact local Andersen supplier										
6'-6"	6'-10 3/4"	6'-8 7/16"	12'-1 7/16"	2'-7 1/8"	41'-1 7/16"	7'-5 1/8"	71'-1 7/16"	12'-5 1/8"	Contact local Andersen supplier	Contact local Andersen supplier		
7'-0"	7'-4 3/4"	7'-2 1/16"	13'-1 7/16"	2'-9 1/8"			41'-1 7/16"	7'-5 1/8"				
7'-6"	7'-10 3/4"	7'-8 7/16"	14'-1 7/16"	2'-11 1/8"								
8'-0"	8'-4 3/4"	8'-2 1/16"	15'-1 7/16"	3'-1 1/8"								
8'-6"	8'-10 3/4"	8'-8 7/16"	16'-1 7/16"	3'-3 3/8"								
9'-0"	9'-4 3/4"	9'-2 1/16"	17'-1 7/16"	3'-5 1/8"								
9'-6"	9'-10 3/4"	9'-8 7/16"	18'-1 7/16"	3'-7 1/8"								
10'-0"	10'-4 3/4"	10'-2 1/16"	19'-1 7/16"	3'-9 1/8"								
10'-6"	10'-10 3/4"	10'-8 7/16"	20'-1 7/16"	3'-11 1/8"								
11'-0"	11'-4 3/4"	11'-2 1/16"	21'-1 7/16"	4'-1 1/8"								
11'-6"	11'-10 3/4"	11'-8 7/16"	22'-1 7/16"	4'-3 3/8"								
12'-0"	12'-4 3/4"	12'-2 1/16"	23'-1 7/16"	4'-5 1/8"								
> 12'-0"		Contact local Andersen supplier										

Notes:

Details have been optimized for use in architectural software and do not match manufacturing specifications.
Dimensions in parentheses are in millimeters.

See Page 22 for Glazing Accessories

Date: 7/11/18
Scale: None

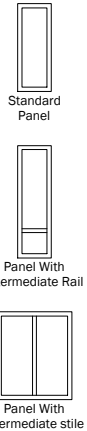


Chart 11.0		Two-Directional - Eight Panel									
Head Jamb Depth at Astragal = 3 1/16", O.A. Frame Depth = 1'-2 11/16", Pocket Depth = 1'-4 7/16"											
Panel Height	R.O. Height	Top of F.F. to Bottom of Header	Minimum Width		Maximum Width						
			R.O.	Pocket R.O.	R.O.	Pocket R.O.	R.O.	Pocket R.O.	R.O.	Pocket R.O.	
			Rated				Not Rated				
			Without Intermediate Stile						With Intermediate Stile		
Contact local Andersen supplier											
< 6'-6"											
6'-6"	6'-10 3/4"	6'-8 7/16"	15'-10 7/16"	2'-7 1/8"	43'-9 3/4"	6'-1"	94'-6 7/16"	12'-5 1/8"	Contact local Andersen supplier	Contact local Andersen supplier	
7'-0"	7'-4 3/4"	7'-2 7/16"	17'-2 7/16"	2'-9 1/8"							
7'-6"	7'-10 3/4"	7'-8 7/16"	18'-6 7/16"	2'-11 1/8"							
8'-0"	8'-4 3/4"	8'-2 7/16"	19'-10 7/16"	3'-1 1/8"							
8'-6"	8'-10 3/4"	8'-8 7/16"	21'-2 7/16"	3'-3 1/8"							
9'-0"	9'-4 3/4"	9'-2 7/16"	22'-6 7/16"	3'-5 1/8"							
9'-6"	9'-10 3/4"	9'-8 7/16"	23'-10 7/16"	3'-7 1/8"							
10'-0"	10'-4 3/4"	10'-2 7/16"	25'-2 7/16"	3'-9 1/8"							
10'-6"	10'-10 3/4"	10'-8 7/16"	26'-6 7/16"	3'-11 1/8"							
11'-0"	11'-4 3/4"	11'-2 7/16"	27'-10 7/16"	4'-1 1/8"			41'-10 7/16"	5'-10 1/8"			
11'-6"	11'-10 3/4"	11'-8 7/16"	29'-2 7/16"	4'-3 1/8"	39'-10 7/16"	5'-7 1/8"					
12'-0"	12'-4 3/4"	12'-2 7/16"	30'-6 7/16"	4'-5 1/8"	38'-6 7/16"	5'-5 1/8"					
> 12'-0"			Contact local Andersen supplier								

Chart 11.1		Two-Directional - Ten Panel									
Head Jamb Depth at Astragal = 3 9/16", O.A. Frame Depth = 1'-6 3/8", Pocket Depth = 1'-8 1/8"											
Panel Height	R.O. Height	Top of F.F. to Bottom of Header	Minimum Width		Maximum Width						
			R.O.	Pocket R.O.	R.O.	Pocket R.O.	R.O.	Pocket R.O.	R.O.	Pocket R.O.	
			Rated				Not Rated				
Without Intermediate Stile										With Intermediate Stile	
Contact local Andersen supplier											
< 6'-6"											
6'-6"	6'-10 3/4"	6'-8 7/16"	19'-7 7/16"	2'-7 1/8"	43'-9 3/4"	5'-0 1/8"	117'-11 7/16"	12'-5 1/8"	Contact local Andersen supplier	Contact local Andersen supplier	
7'-0"	7'-4 3/4"	7'-2 7/16"	21'-3 7/16"	2'-9 1/8"							
7'-6"	7'-10 3/4"	7'-8 7/16"	22'-11 7/16"	2'-11 1/8"							
8'-0"	8'-4 3/4"	8'-2 7/16"	24'-7 7/16"	3'-1 1/8"							
8'-6"	8'-10 3/4"	8'-8 7/16"	26'-3 7/16"	3'-3 1/8"							
9'-0"	9'-4 3/4"	9'-2 7/16"	27'-11 7/16"	3'-5 1/8"							
9'-6"	9'-10 3/4"	9'-8 7/16"	29'-7 7/16"	3'-7 1/8"							
10'-0"	10'-4 3/4"	10'-2 7/16"	31'-3 7/16"	3'-9 1/8"							
10'-6"	10'-10 3/4"	10'-8 7/16"	32'-11 7/16"	3'-11 1/8"							
11'-0"	11'-4 3/4"	11'-2 7/16"	34'-7 7/16"	4'-1 1/8"							
11'-6"	11'-10 3/4"	11'-8 7/16"	36'-3 7/16"	4'-3 1/8"							
12'-0"	12'-4 3/4"	12'-2 7/16"	37'-11 7/16"	4'-5 1/8"							
> 12'-0"					Contact local Andersen supplier						

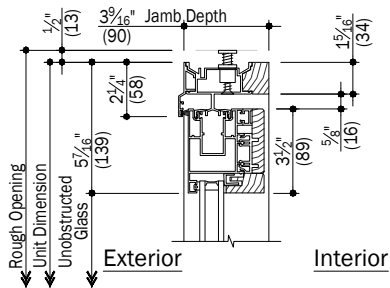
Chart 11.2		Two-Directional - Twelve Panel									
Head Jamb Depth at Astragal = 3 9/16", O.A. Frame Depth = 1'-10 1/16", Pocket Depth = 1'-11 13/16"											
Panel Height	R.O. Height	Top of F.F. to Bottom of Header	Minimum Width		Maximum Width						
			R.O.	Pocket R.O.	R.O.	Pocket R.O.	R.O.	Pocket R.O.	R.O.	Pocket R.O.	
			Rated				Not Rated				
			Without Intermediate Stile						With Intermediate Stile		
< 6'-6"		Contact local Andersen supplier									
6'-6"	6'-10 3/4"	6'-8 7/16"	23'-4 7/16"	2'-7 1/8"	43'-9 3/4"	4'-3 9/16"	141'-4 7/16"	12'-5 1/8"	Contact local Andersen supplier	Contact local Andersen supplier	
7'-0"	7'-4 3/4"	7'-2 7/16"	25'-4 7/16"	2'-9 1/8"			81'-4 7/16"	7'-5 1/8"			
7'-6"	7'-10 3/4"	7'-8 7/16"	27'-4 7/16"	2'-11 1/8"							
8'-0"	8'-4 3/4"	8'-2 7/16"	29'-4 7/16"	3'-1 1/8"							
8'-6"	8'-10 3/4"	8'-8 7/16"	31'-4 7/16"	3'-3 1/8"							
9'-0"	9'-4 3/4"	9'-2 7/16"	33'-4 7/16"	3'-5 1/8"							
9'-6"	9'-10 3/4"	9'-8 7/16"	35'-4 7/16"	3'-7 1/8"							
10'-0"	10'-4 3/4"	10'-2 7/16"	37'-4 7/16"	3'-9 1/8"							
10'-6"	10'-10 3/4"	10'-8 7/16"	39'-4 7/16"	3'-11 1/8"							
11'-0"	11'-4 3/4"	11'-2 7/16"	41'-4 7/16"	4'-1 1/8"							
11'-6"	11'-10 3/4"	11'-8 7/16"	43'-4 7/16"	4'-3 1/8"							
12'-0"	12'-4 3/4"	12'-2 7/16"	45'-4 7/16"	4'-5 1/8"							
> 12'-0"		Contact local Andersen supplier									

Notes:

Details have been optimized for use in architectural software and do not match manufacturing specifications.
Dimensions in parentheses are in millimeters.

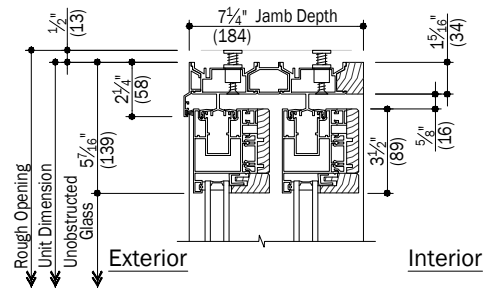
See Page 22 for Glazing Accessories

Date: 7/11/18
Scale: None

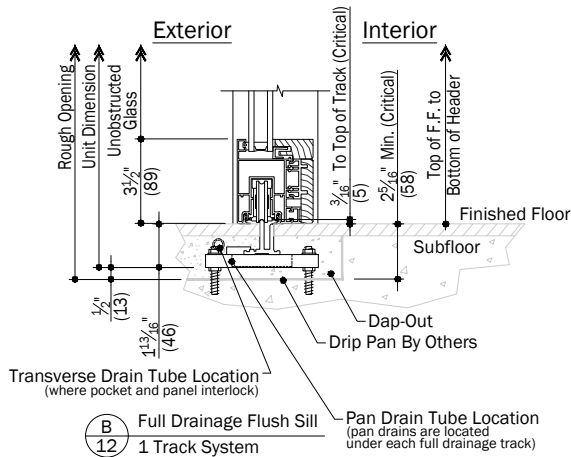


A
12 Head
1 Track System

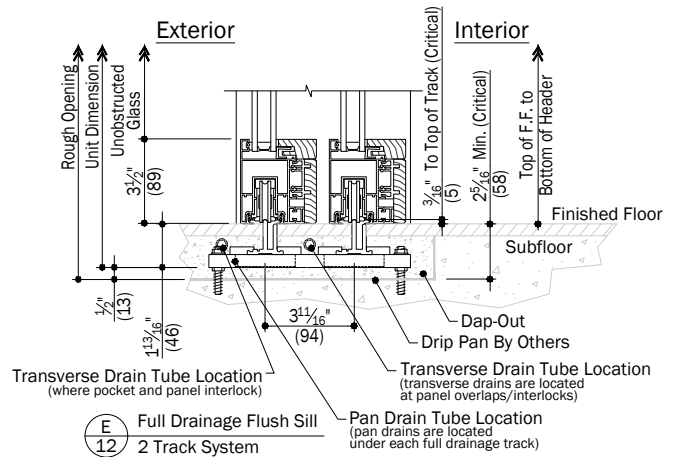
IMPORTANT
For more detailed
information pertaining to
product application. See the
**Weiland® Liftslide
Site Prep Guide.**



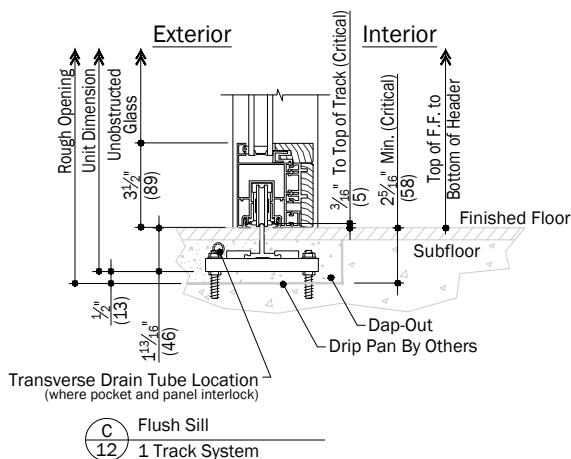
D
12 Head
2 Track System



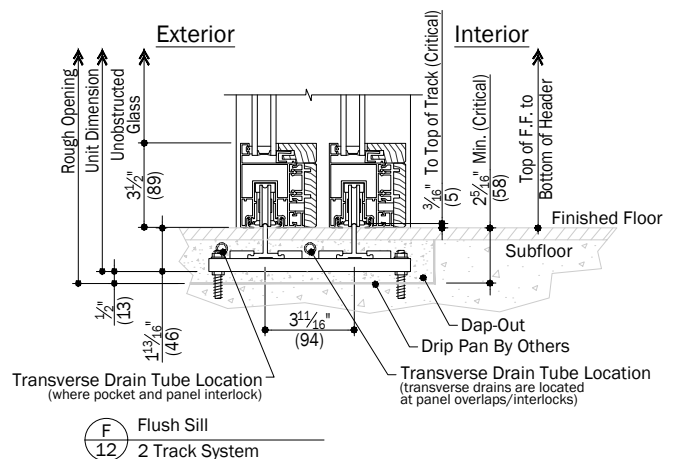
B
12 Full Drainage Flush Sill
1 Track System



E
12 Full Drainage Flush Sill
2 Track System



C
12 Flush Sill
1 Track System



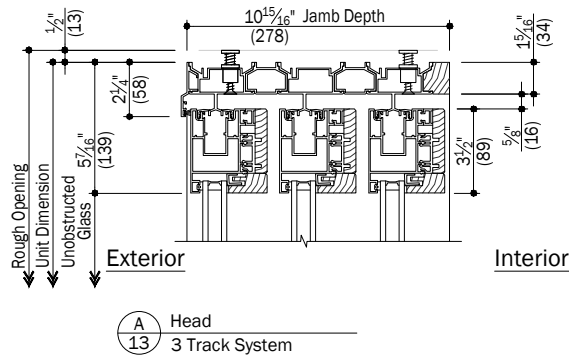
F
12 Flush Sill
2 Track System

Notes:

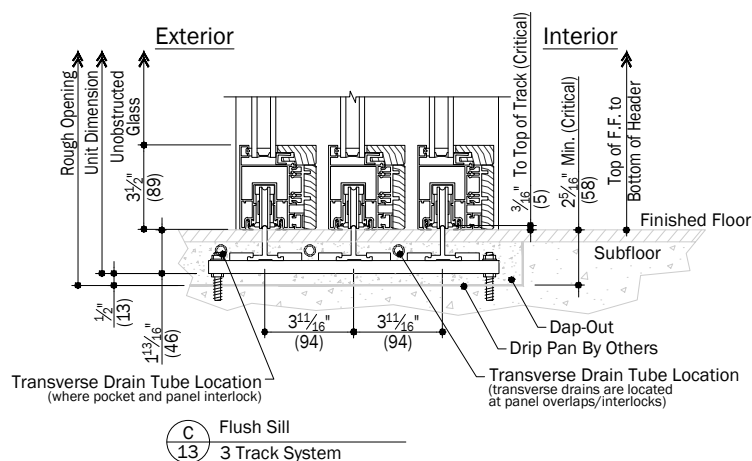
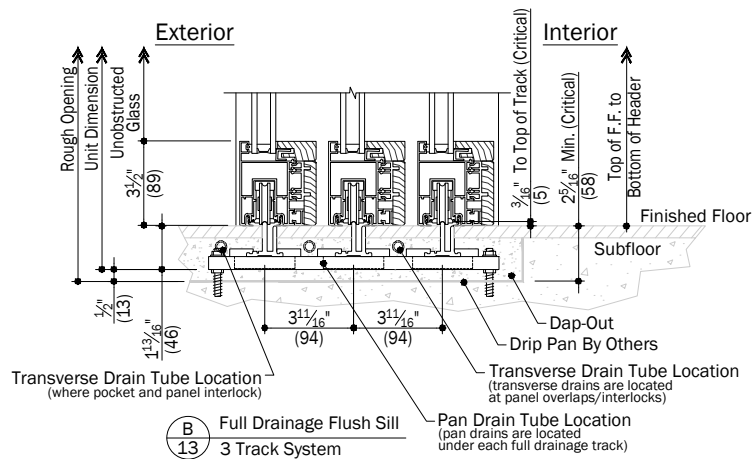
Details have been optimized for use in architectural software and do not match manufacturing specifications.
Dimensions in parentheses are in millimeters.

See Page 22 for Glazing Accessories

Date: 7/11/18
Scale: 1 1/2" (38) = 1' (305)



IMPORTANT
For more detailed information pertaining to product application. See the Weiland® Liftslide Site Prep Guide.



Notes:

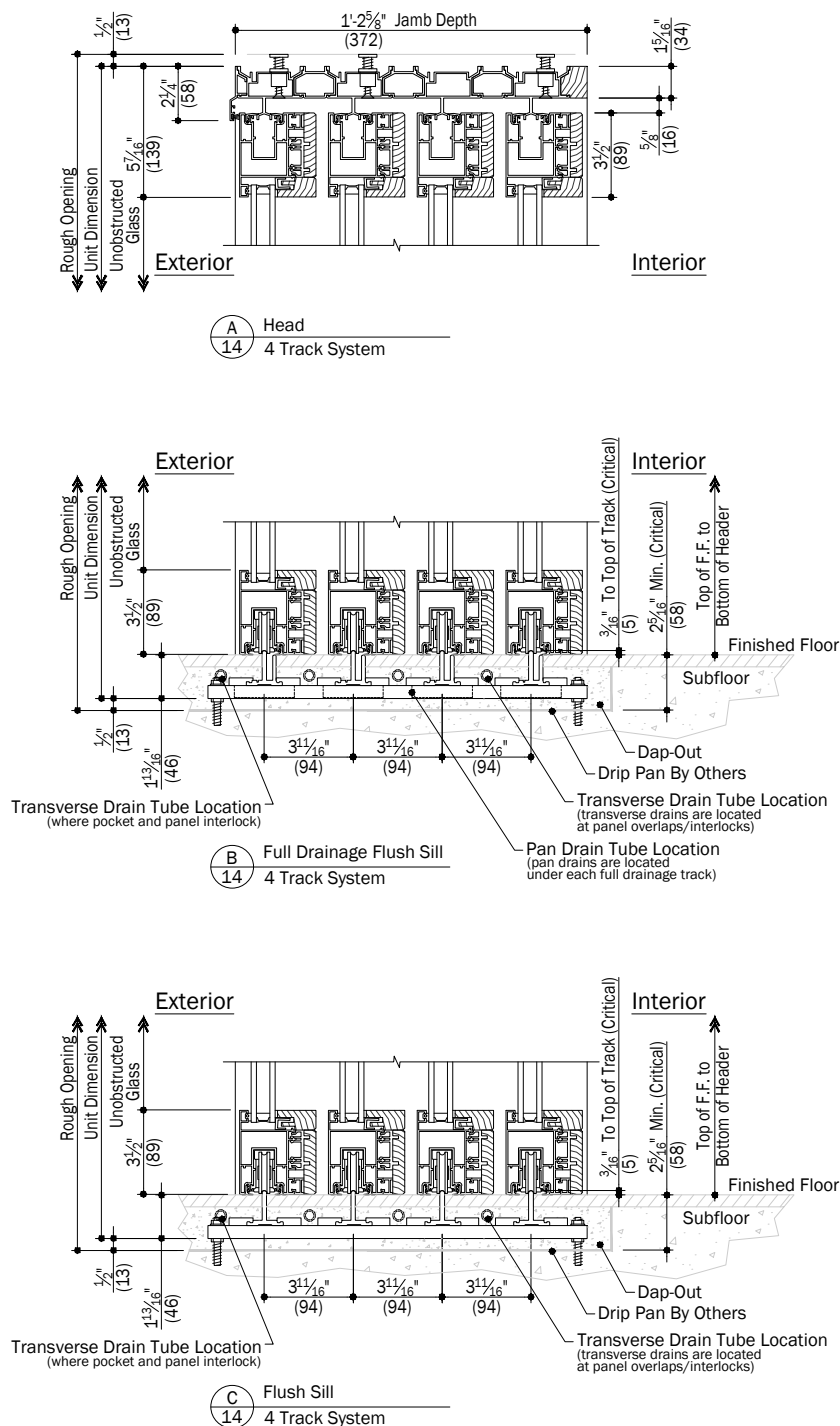
Details have been optimized for use in architectural software and do not match manufacturing specifications.
Dimensions in parentheses are in millimeters.

See Page 22 for Glazing Accessories

Date: 7/11/18
Scale: 1 1/2" (38) = 1' (305)

IMPORTANT

For more detailed information pertaining to product application. See the **Weiland® Liftslide Site Prep Guide.**



Notes:

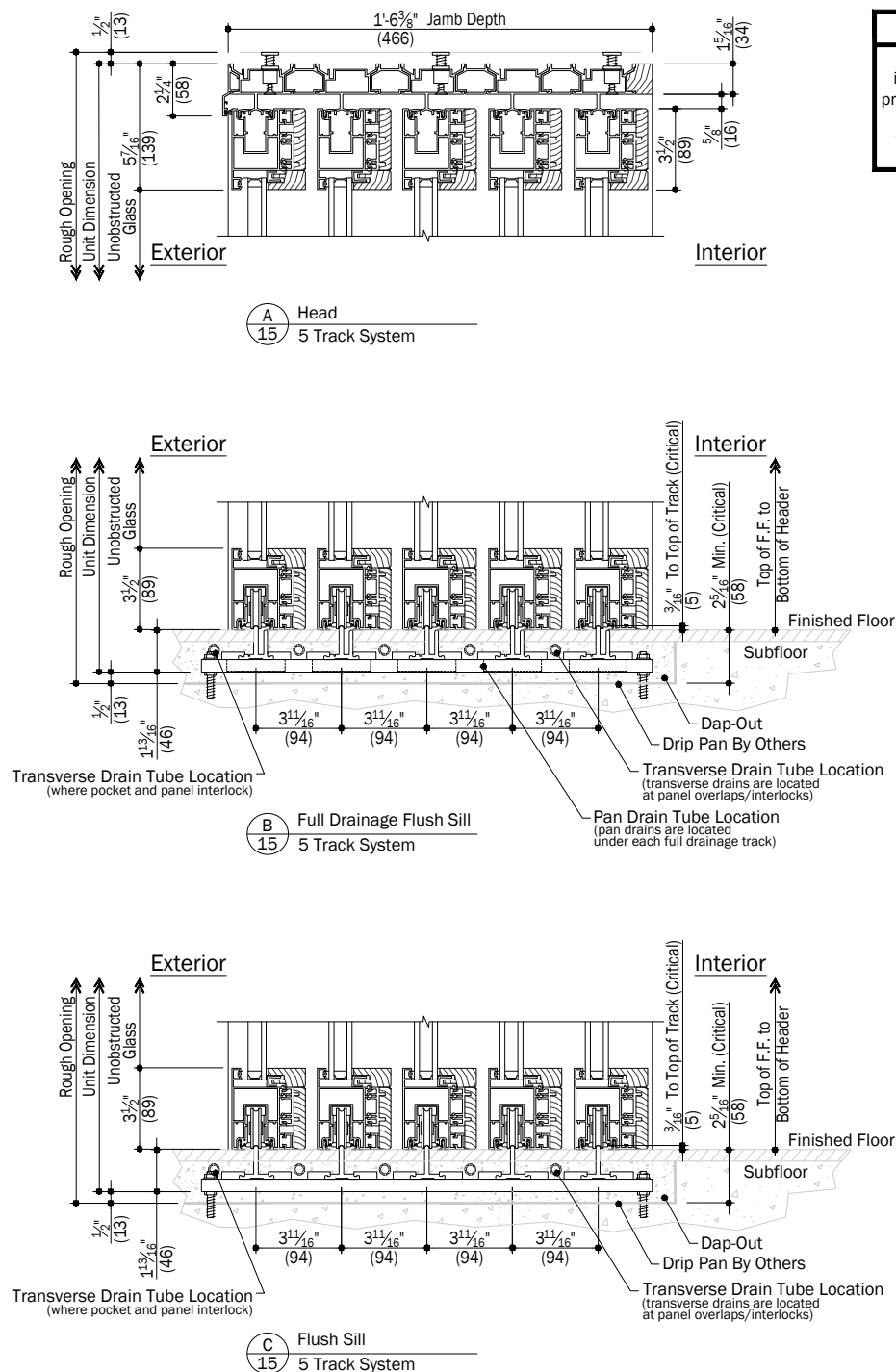
Details have been optimized for use in architectural software and do not match manufacturing specifications. Dimensions in parentheses are in millimeters.

See Page 22 for Glazing Accessories

Date: 7/11/18
Scale: 1 1/2" (38) = 1' (305)

IMPORTANT

For more detailed information pertaining to product application. See the **Weiland® Liftslide Site Prep Guide.**



Notes:

Details have been optimized for use in architectural software and do not match manufacturing specifications. Dimensions in parentheses are in millimeters.

See Page 22 for Glazing Accessories

Date: 7/11/18
Scale: 1 1/2" (38) = 1' (305)

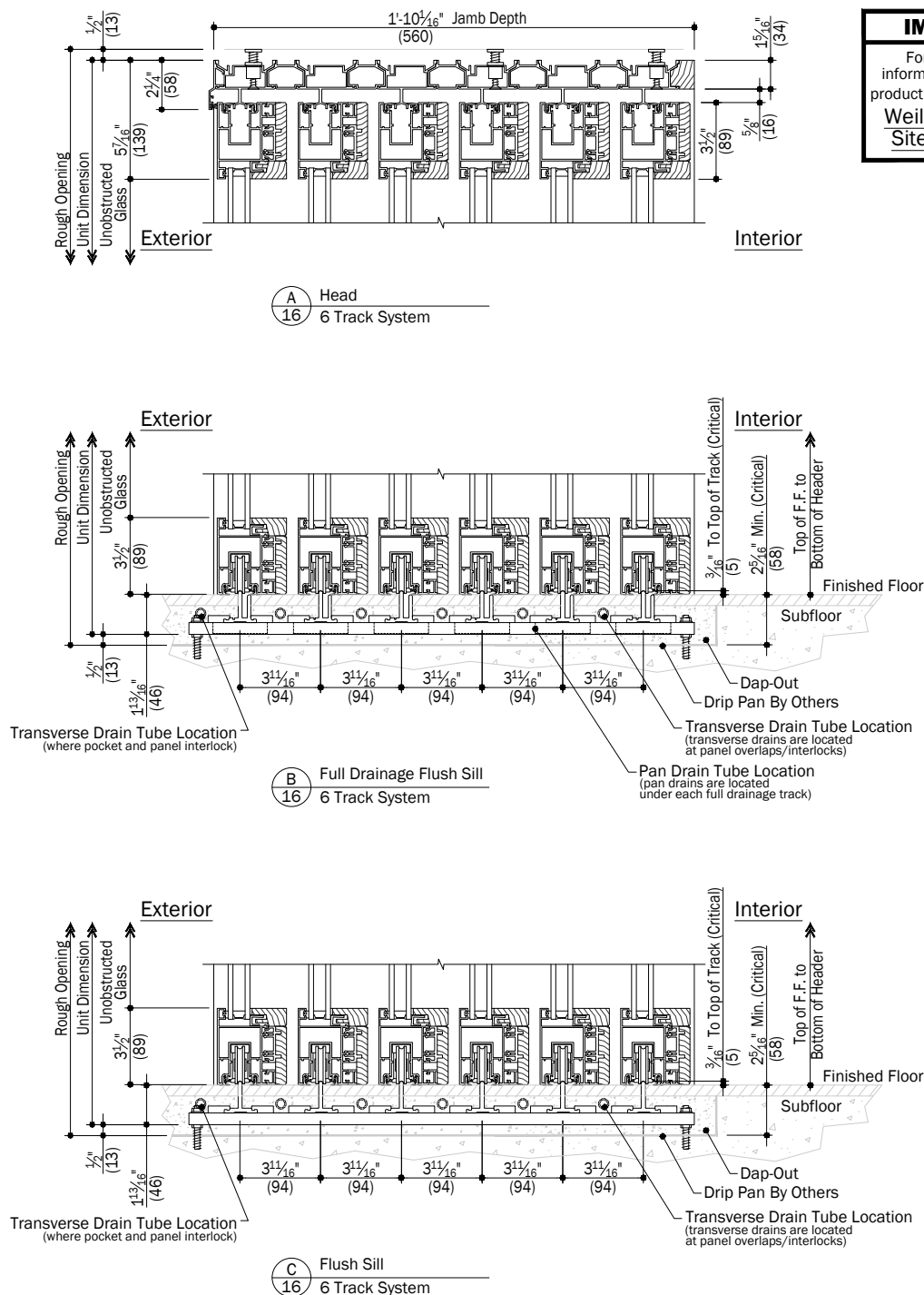
Big Doors

Weiland™ Pocket Liftslide
Aluminum Wood - No Screen

Andersen®
ARCHITECTURAL
COLLECTION

IMPORTANT

For more detailed information pertaining to product application. See the Weiland® Liftslide Site Prep Guide.



Notes:

Details have been optimized for use in architectural software and do not match manufacturing specifications. Dimensions in parentheses are in millimeters.

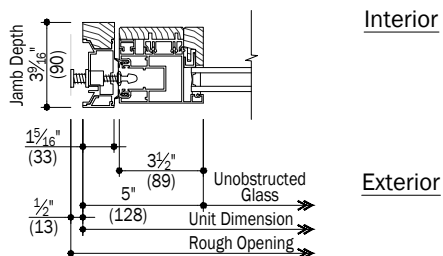
See Page 22 for Glazing Accessories

Date: 7/11/18
Scale: $1\frac{1}{2}"$ (38) = 1' (305)

Big Doors

Weiland™ Pocket Liftslide
Aluminum Wood - No Screen

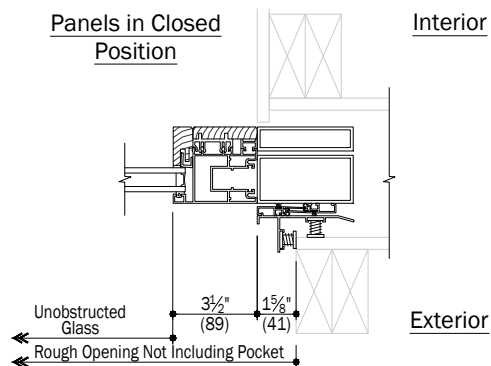
Andersen®
ARCHITECTURAL
COLLECTION



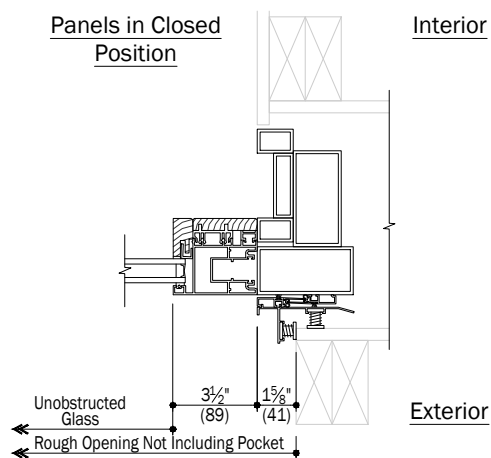
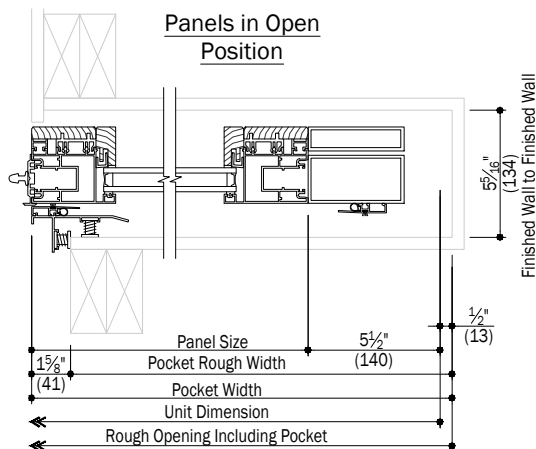
(A) Stationary Jamb
17 1 Track System

IMPORTANT

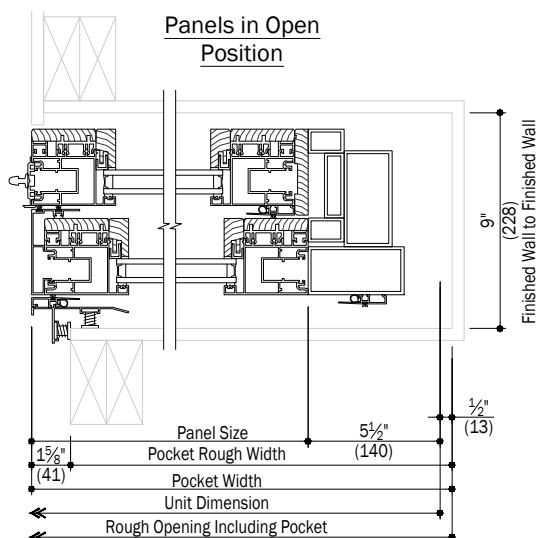
For more detailed information pertaining to product application. See the Weiland® Liftslide Site Prep Guide.



(B) Pocket Jamb
17 1 Track System



(C) Pocket Jamb
17 2 Track System



Notes:

Details have been optimized for use in architectural software and do not match manufacturing specifications. Dimensions in parentheses are in millimeters.

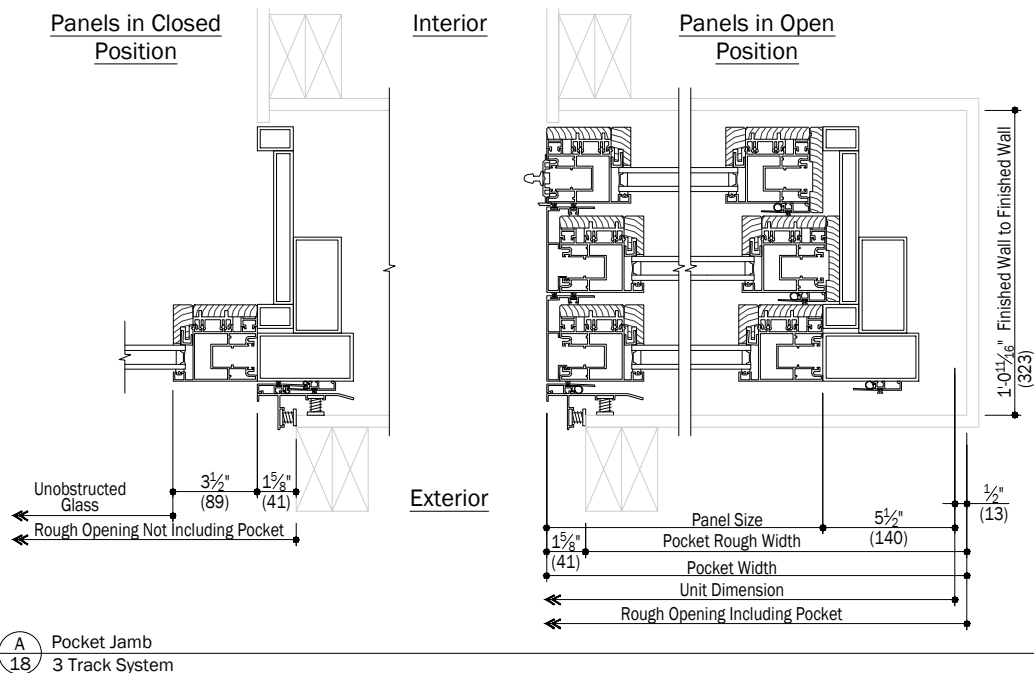
See Page 22 for Glazing Accessories

Date: 7/11/18
Scale: 1 1/2" (38) = 1' (305)

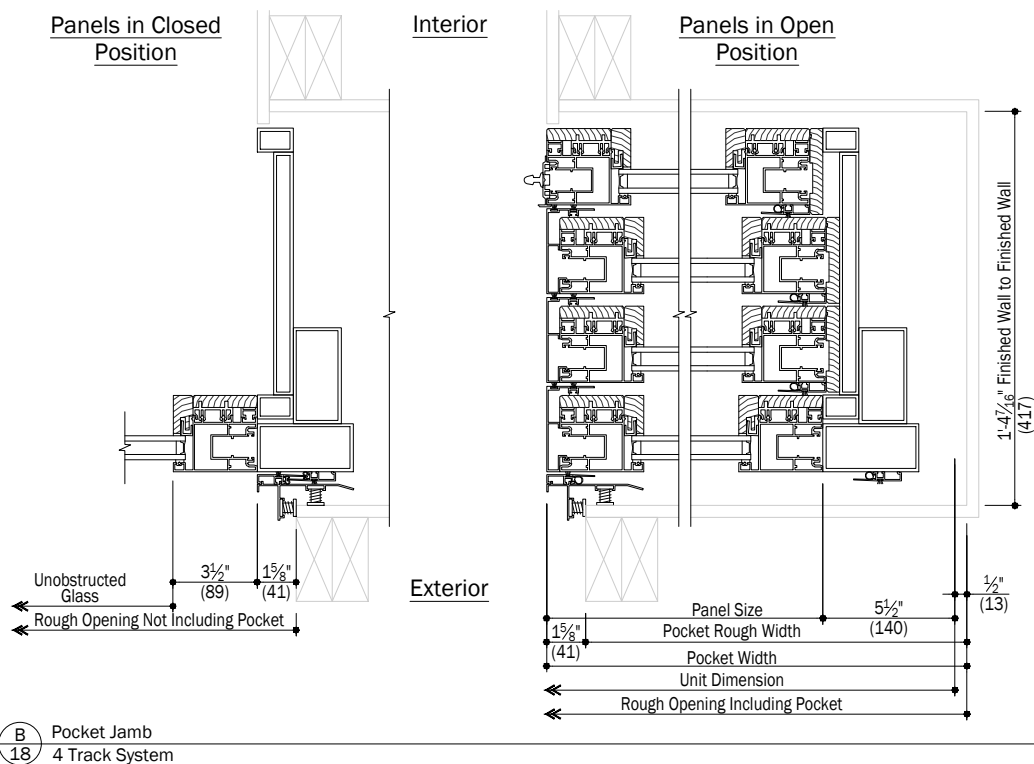
Big Doors

Weiland™ Pocket Liftslide
Aluminum Wood - No Screen

Andersen®
ARCHITECTURAL
COLLECTION



IMPORTANT
For more detailed information pertaining to product application. See the Weiland® Liftslide Site Prep Guide.



Notes:

Details have been optimized for use in architectural software and do not match manufacturing specifications.
Dimensions in parentheses are in millimeters.

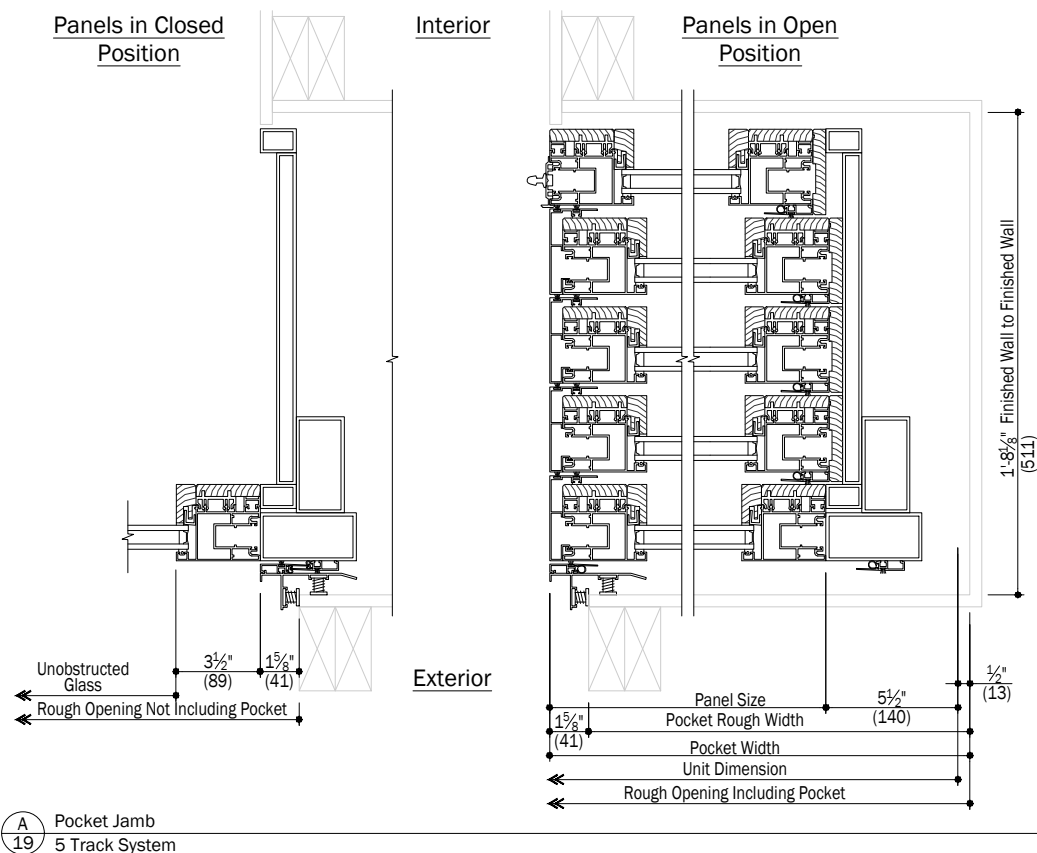
See Page 22 for Glazing Accessories

Date: 7/11/18
Scale: 1 1/2" (38) = 1' (305)

Big Doors

Weiland™ Pocket Liftslide
Aluminum Wood - No Screen

Andersen®
ARCHITECTURAL
COLLECTION



IMPORTANT

For more detailed information pertaining to product application. See the **Weiland® Liftslide Site Prep Guide.**

Notes:

Details have been optimized for use in architectural software and do not match manufacturing specifications. Dimensions in parentheses are in millimeters.

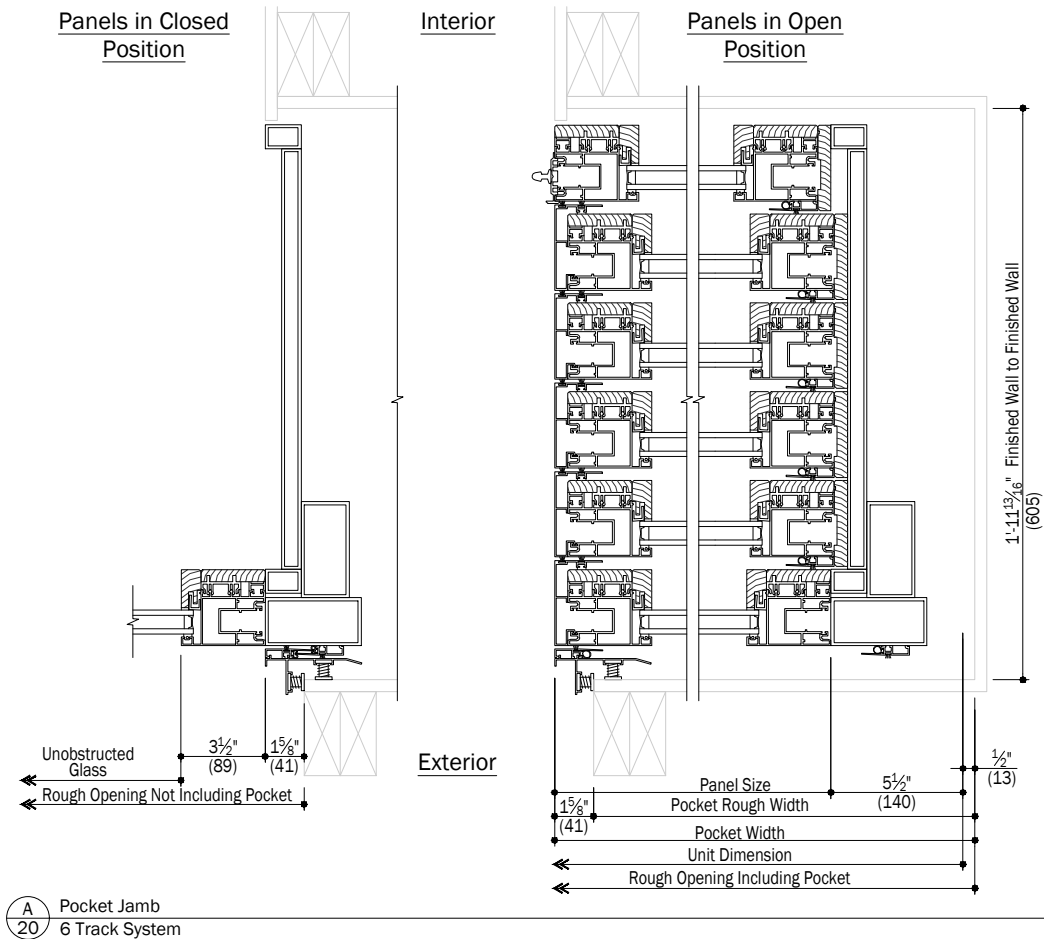
See Page 22 for Glazing Accessories

Date: 7/11/18
Scale: $1\frac{1}{2}"$ (38) = 1' (305)

Big Doors

Weiland™ Pocket Liftslide
Aluminum Wood - No Screen

Andersen®
ARCHITECTURAL
COLLECTION



IMPORTANT

For more detailed information pertaining to product application. See the **Weiland® Liftslide Site Prep Guide.**

Weiland® Liftslide Site Prep Guide.

Notes:

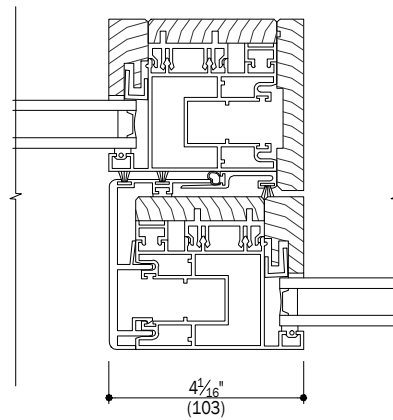
Details have been optimized for use in architectural software and do not match manufacturing specifications.
Dimensions in parentheses are in millimeters.

See Page 22 for Glazing Accessories

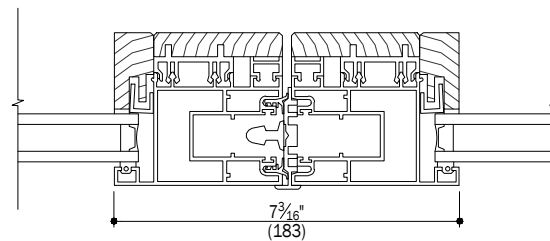
Date: 7/11/18
Scale: 1 1/2" (38) = 1' (305)

Andersen Windows, Inc. reserves the right to change drawing specifications without notice

File:	AC	Big Doors	Sections	Liftnslide	AW-P-NS	Page 20 of 22
-------	----	-----------	----------	------------	---------	---------------



A
21 Panel Interlock



B
21 Astragal

Notes:

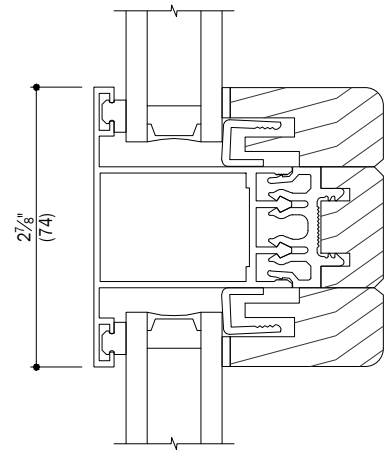
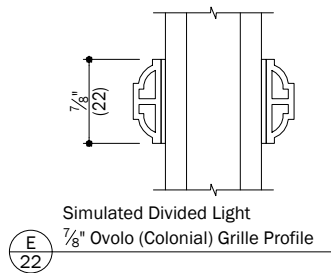
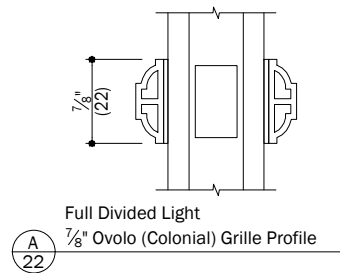
Details have been optimized for use in architectural software and do not match manufacturing specifications.
Dimensions in parentheses are in millimeters.

See Page 22 for Glazing Accessories

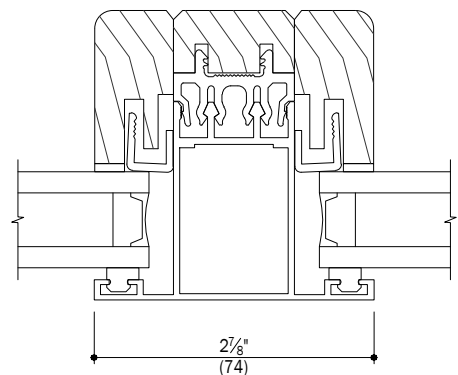
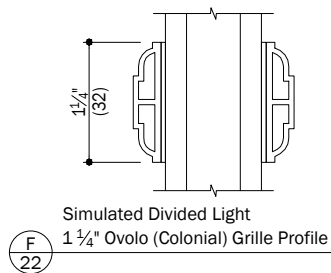
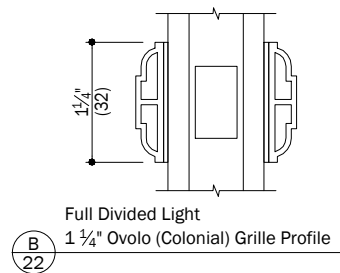
Date: 7/11/18
Scale: 3" (76) = 1' (305)

Big Doors

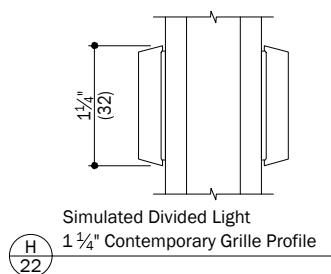
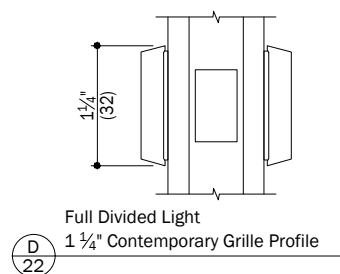
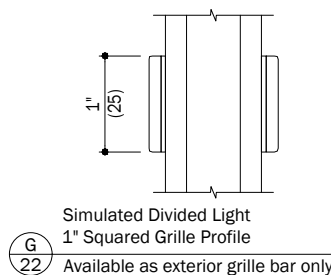
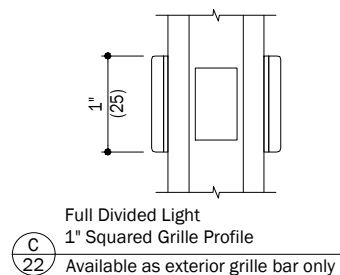
Weiland™ Pocket Liftslide
Aluminum Wood - No Screen



J
22 Intermediate Rail



K
22 Intermediate Stile



Notes:

Details have been optimized for use in architectural software and do not match manufacturing specifications.
Dimensions in parentheses are in millimeters.

Date: 7/11/18
Scale: 6" (152) = 1' (305)