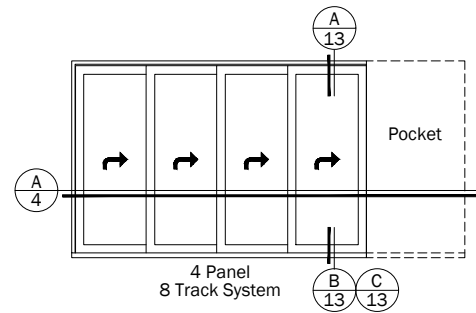
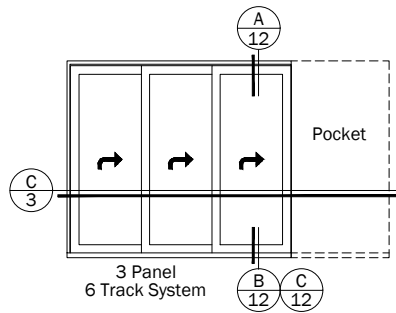
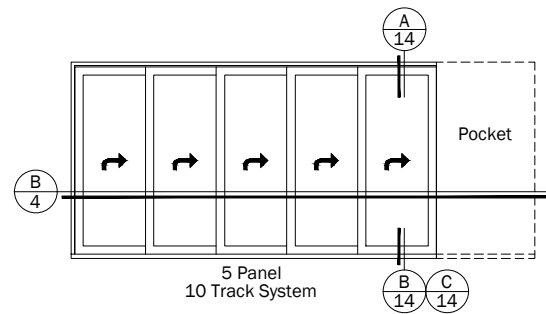
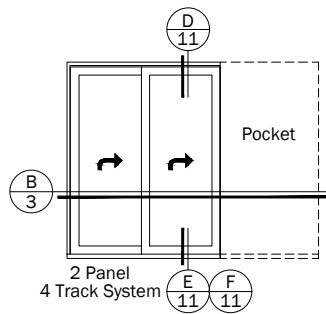
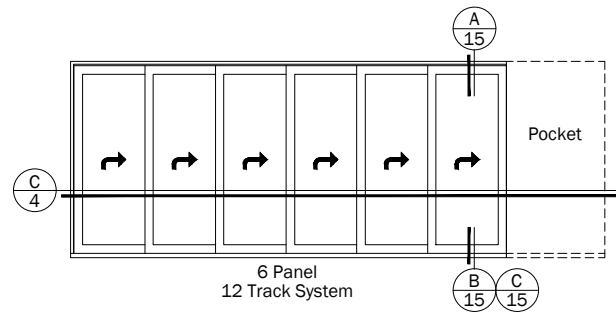
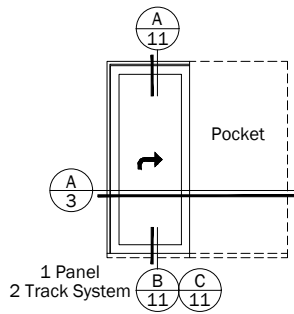


Big Doors

Weiland™ Pocket Liftslide
Aluminum - With Multiple Screens

Andersen®
ARCHITECTURAL
COLLECTION



Notes:

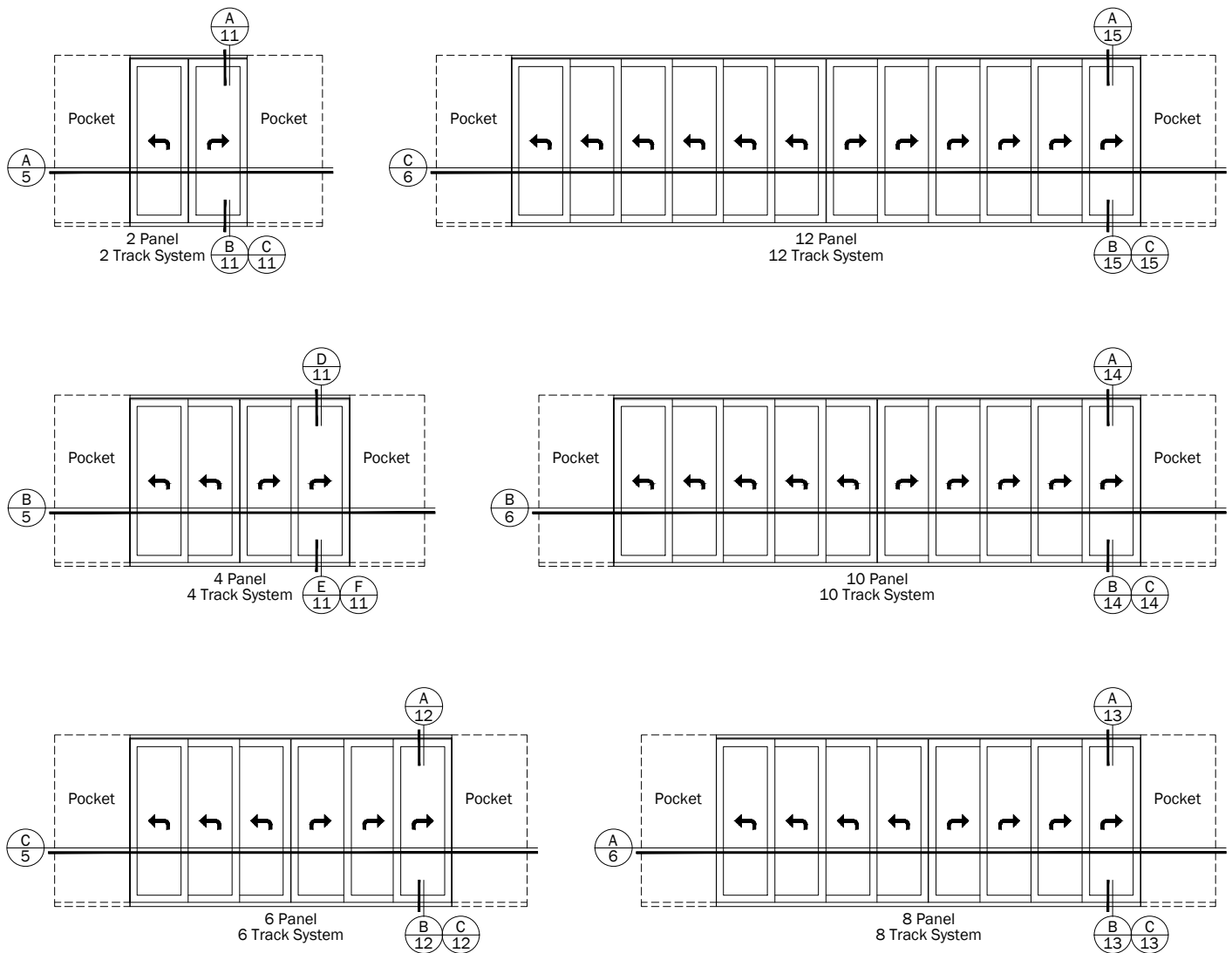
Details have been optimized for use in architectural software and do not match manufacturing specifications.
Dimensions in parentheses are in millimeters.

See Page 22 for Glazing Accessories

Date: 11/06/18
Scale: None

Big Doors

Weiland™ Pocket Liftslide
Aluminum - With Multiple Screens



Notes:

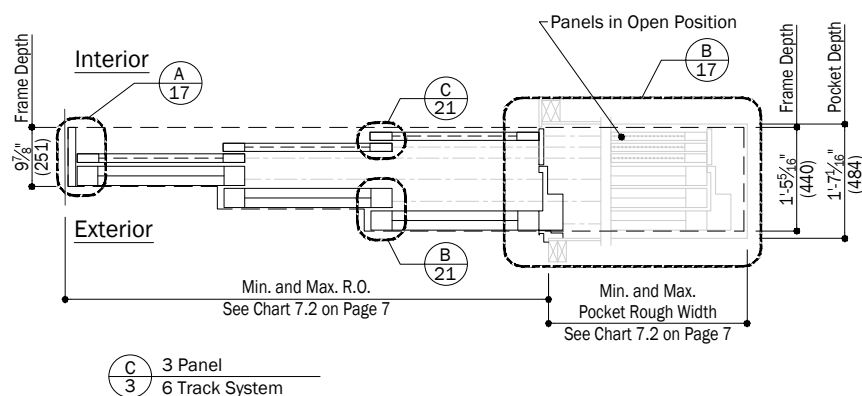
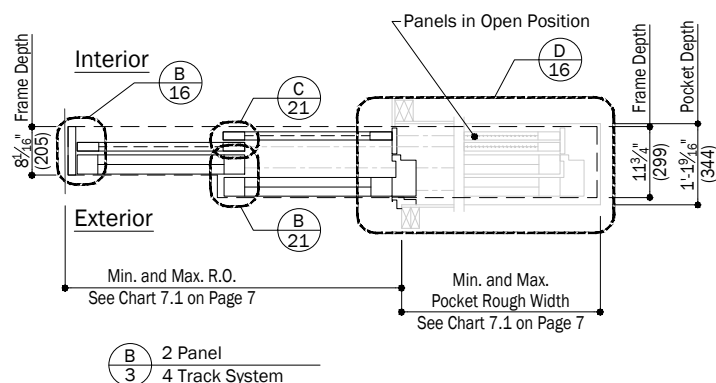
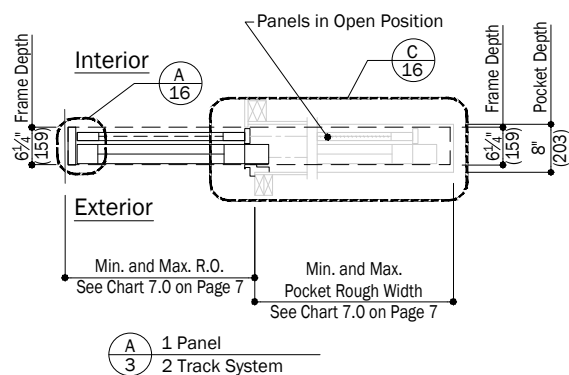
Details have been optimized for use in architectural software and do not match manufacturing specifications.
Dimensions in parentheses are in millimeters.

See Page 22 for Glazing Accessories

Date: 11/06/18
Scale: None

Big Doors

Weiland™ Pocket Liftslide
Aluminum - With Multiple Screens



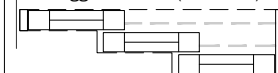
Line Types
--- Perimeter of head jamb
--- Sill tracks
--- Panel and jamb outline
--- Rough opening

IMPORTANT

For more detailed information pertaining to product application. See the Weiland® Liftslide Site Prep Guide.

Head Track Options

Staggered Track (Standard)



Full Track



Notes:

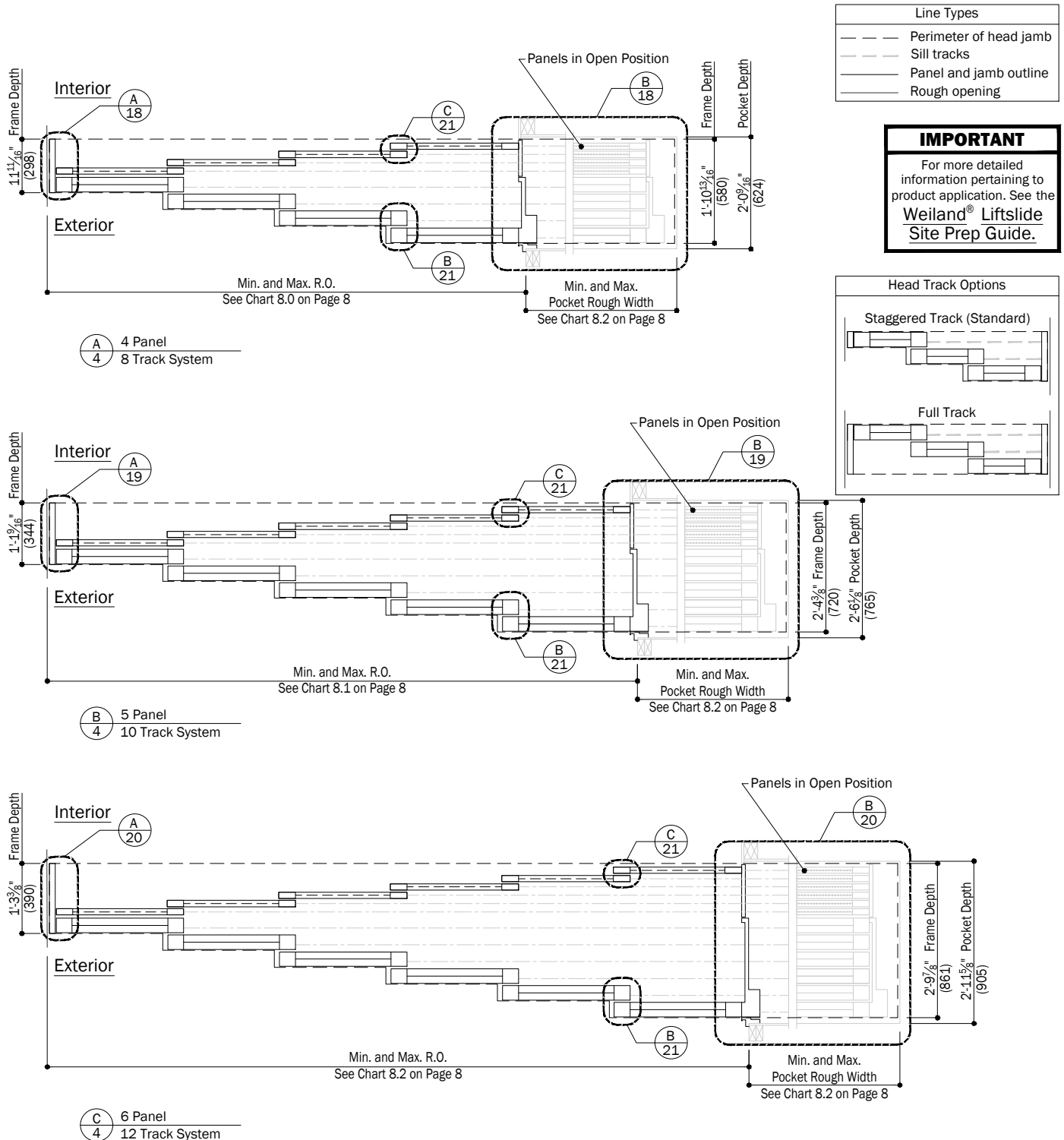
Details have been optimized for use in architectural software and do not match manufacturing specifications. Dimensions in parentheses are in millimeters.

See Page 22 for Glazing Accessories

Date: 11/06/18
Scale: 3/8" (10) = 1' (305)

Big Doors

Weiland™ Pocket Liftslide
Aluminum - With Multiple Screens



Notes:

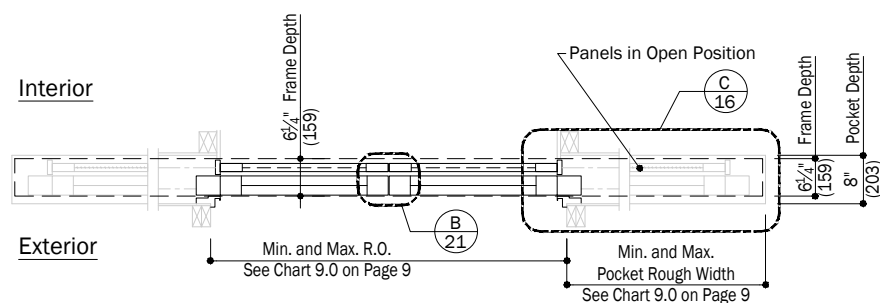
Details have been optimized for use in architectural software and do not match manufacturing specifications.
Dimensions in parentheses are in millimeters.

See Page 22 for Glazing Accessories

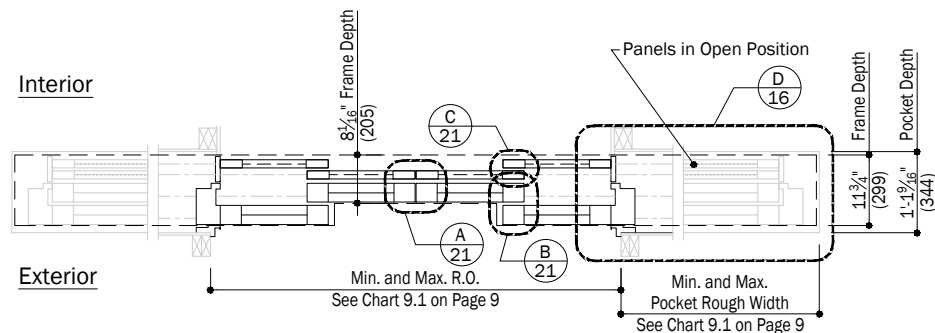
Date: 11/06/18
Scale: 3/8" (10) = 1' (305)

Big Doors

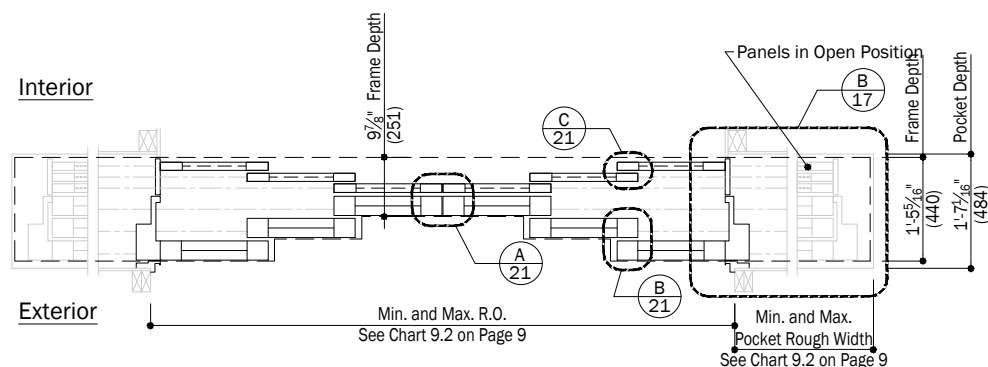
Weiland™ Pocket Liftslide
Aluminum - With Multiple Screens



A 2 Panel
5 2 Track System



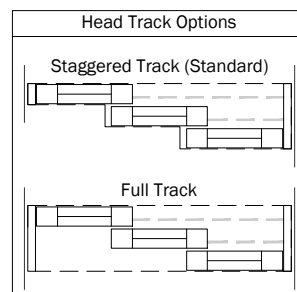
B 4 Panel
5 4 Track System



C 6 Panel
5 6 Track System

Line Types
--- Perimeter of head jamb
--- Sill tracks
--- Panel and jamb outline
--- Rough opening

IMPORTANT
For more detailed information pertaining to product application. See the Weiland® Liftslide Site Prep Guide.



Notes:

Details have been optimized for use in architectural software and do not match manufacturing specifications. Dimensions in parentheses are in millimeters.

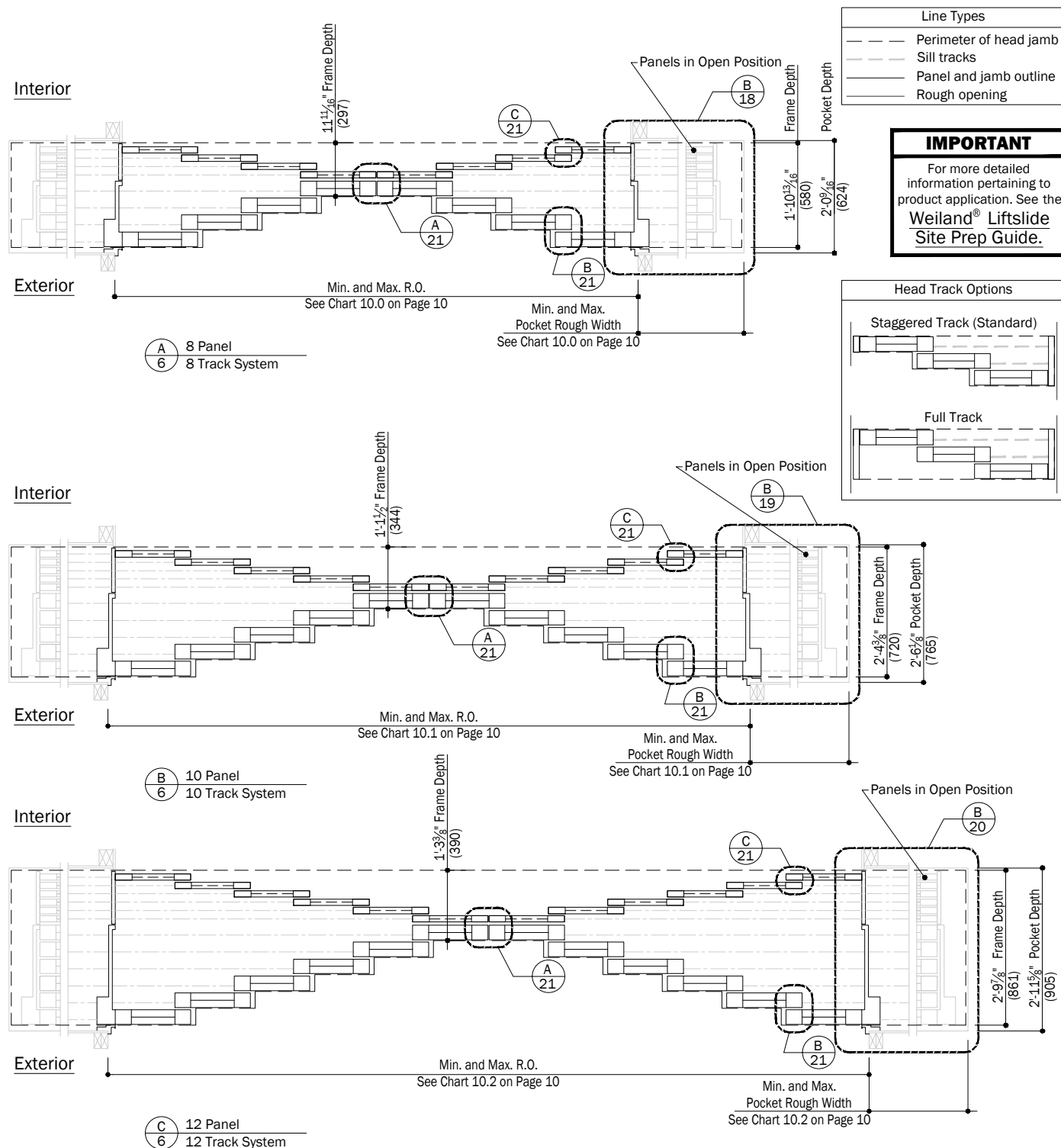
See Page 22 for Glazing Accessories

Date: 11/06/18
Scale: 3/8" (10) = 1' (305)

Big Doors

Weiland™ Pocket Liftslide
Aluminum - With Multiple Screens

Andersen®
ARCHITECTURAL
COLLECTION



Notes:

Details have been optimized for use in architectural software and do not match manufacturing specifications.
Dimensions in parentheses are in millimeters.

See Page 22 for Glazing Accessories

Date: 11/06/18
Scale: 3/8" (10) = 1' (305)

Chart 7.0		One-Directional - One Panel									
Frame Depth = 6 1/4", Pocket Depth = 8"											
Panel Height	R.O. Height	Top of F.F. to Bottom of Header	Minimum Width			Maximum Width					
			R.O.	Pocket R.O.	R.O.	Pocket R.O.	R.O.	Pocket R.O.	R.O.	Pocket R.O.	
			Rated Non-Impact			Not Rated					
			Without Intermediate Stile						With Intermediate Stile		
< 6'-6"		Contact local Andersen supplier									
6'-6"	6'-10 3/4"	6'-8 7/16"	2'-5 5/8"	2'-7 1/8"	7'-3 5/8"	7'-5 1/8"	12'-3 5/8"	12'-5 1/8"	Contact local Andersen supplier	Contact local Andersen supplier	
7'-0"	7'-4 3/4"	7'-2 7/16"	2'-7 5/8"	2'-9 1/8"							
7'-6"	7'-10 3/4"	7'-8 7/16"	2'-9 5/8"	2'-11 1/8"							
8'-0"	8'-4 3/4"	8'-2 7/16"	2'-11 5/8"	3'-1 1/8"							
8'-6"	8'-10 3/4"	8'-8 7/16"	3'-1 5/8"	3'-3 1/8"							
9'-0"	9'-4 3/4"	9'-2 7/16"	3'-3 5/8"	3'-5 1/8"	6'-9 5/8"	6'-11 1/8"					
9'-6"	9'-10 3/4"	9'-8 7/16"	3'-5 5/8"	3'-7 1/8"	6'-5 5/8"	6'-7 1/8"					
10'-0"	10'-4 3/4"	10'-2 7/16"	3'-7 5/8"	3'-9 1/8"	6'-3 5/8"	6'-5 1/8"					
10'-6"	10'-10 3/4"	10'-8 7/16"	3'-9 5/8"	3'-11 1/8"	5'-11 1/8"	6'-1 1/8"					
11'-0"	11'-4 3/4"	11'-2 7/16"	3'-11 5/8"	4'-1 1/8"	5'-8 5/8"	5'-10 1/8"					
11'-6"	11'-10 3/4"	11'-8 7/16"	4'-1 5/8"	4'-3 1/8"	5'-5 5/8"	5'-7 1/8"					
12'-0"	12'-4 3/4"	12'-2 7/16"	4'-3 5/8"	4'-5 1/8"	5'-3 5/8"	5'-5 1/8"					
> 12'-0"		Contact local Andersen supplier									

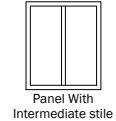
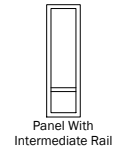
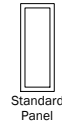


Chart 7.1		One-Directional - Two Panel											
Lock Jamb Depth = 8 1/16", O.A. Frame Depth = 11 3/4", Pocket Depth = 1'-1 9/16"													
Panel Height	R.O. Height	Top of F.F. to Bottom of Header	Minimum Width		Maximum Width								
			R.O.	Pocket R.O.	R.O.		Pocket R.O.	R.O.	Pocket R.O.	R.O.	Pocket R.O.		
			Rated Non-Impact				Not Rated						
Without Intermediate Stile												With Intermediate Stile	
< 6'-6"		Contact local Andersen supplier											
6'-6"	6'-10 3/4"	6'-8 7/16"	4'-4 1/8"	2'-7 1/8"	14'-0 1/8"	7'-5 1/8"	24'-0 1/8"	12'-5 1/8"	Contact local Andersen supplier	Contact local Andersen supplier			
7'-0"	7'-4 3/4"	7'-2 7/16"	4'-8 1/8"	2'-9 1/8"			14'-0 1/8"	7'-5 1/8"					
7'-6"	7'-10 3/4"	7'-8 7/16"	5'-0 1/8"	2'-11 1/8"									
8'-0"	8'-4 3/4"	8'-2 7/16"	5'-4 1/8"	3'-1 1/8"									
8'-6"	8'-10 3/4"	8'-8 7/16"	5'-8 1/8"	3'-3 1/8"									
9'-0"	9'-4 3/4"	9'-2 7/16"	6'-0 1/8"	3'-5 1/8"	13'-0 1/8"	6'-11 1/8"							
9'-6"	9'-10 3/4"	9'-8 7/16"	6'-4 1/8"	3'-7 1/8"	12'-4 1/8"	6'-7 1/8"							
10'-0"	10'-4 3/4"	10'-2 7/16"	6'-8 1/8"	3'-9 1/8"	12'-0 1/8"	6'-5 1/8"							
10'-6"	10'-10 3/4"	10'-8 7/16"	7'-0 1/8"	3'-11 1/8"	11'-4 1/8"	6'-1 1/8"							
11'-0"	11'-4 3/4"	11'-2 7/16"	7'-4 1/8"	4'-1 1/8"	10'-10 1/8"	5'-10 1/8"							
11'-6"	11'-10 3/4"	11'-8 7/16"	7'-8 1/8"	4'-3 1/8"	10'-4 1/8"	5'-7 1/8"							
12'-0"	12'-4 3/4"	12'-2 7/16"	8'-0 1/8"	4'-5 1/8"	10'-0 1/8"	5'-5 1/8"							
> 12'-0"		Contact local Andersen supplier											

Chart 7.2		One-Directional - Three Panel									
Lock Jamb Depth = 9 7/8", O.A. Frame Depth = 1'-5 5/16", Pocket Depth = 1'-7 1/16"											
Panel Height	R.O. Height	Top of F.F. to Bottom of Header	Minimum Width			Maximum Width					
			R.O.	Pocket R.O.	R.O.	Pocket R.O.	R.O.	Pocket R.O.	R.O.	Pocket R.O.	
			Rated Non-Impact						Not Rated		
			Without Intermediate Stile						With Intermediate Stile		
< 6'-6"	Contact local Andersen supplier										
6'-6"	6'-10 3/4"	6'-8 7/16"	6'-2 5/8"	2'-7 1/8"	20'-8 5/8"	7'-5 1/8"	35'-8 5/8"	12'-5 1/8"	Contact local Andersen supplier	Contact local Andersen supplier	
7'-0"	7'-4 3/4"	7'-2 7/16"	6'-8 5/8"	2'-9 1/8"			20'-8 5/8"	7'-5 1/8"			
7'-6"	7'-10 3/4"	7'-8 7/16"	7'-2 5/8"	2'-11 1/8"							
8'-0"	8'-4 3/4"	8'-2 7/16"	7'-8 5/8"	3'-1 1/8"							
8'-6"	8'-10 3/4"	8'-8 7/16"	8'-2 5/8"	3'-3 3/8"							
9'-0"	9'-4 3/4"	9'-2 7/16"	8'-8 5/8"	3'-5 1/8"	19'-2 5/8"	6'-11 1/8"					
9'-6"	9'-10 3/4"	9'-8 7/16"	9'-2 5/8"	3'-7 1/8"	18'-2 5/8"	6'-7 1/8"					
10'-0"	10'-4 3/4"	10'-2 7/16"	9'-8 5/8"	3'-9 1/8"	17'-8 5/8"	6'-5 1/8"					
10'-6"	10'-10 3/4"	10'-8 7/16"	10'-2 5/8"	3'-11 1/8"	16'-8 5/8"	6'-1 1/8"					
11'-0"	11'-4 3/4"	11'-2 7/16"	10'-8 5/8"	4'-1 1/8"	15'-11 5/8"	5'-10 1/8"					
11'-6"	11'-10 3/4"	11'-8 7/16"	11'-2 5/8"	4'-3 3/8"	15'-2 5/8"	5'-7 1/8"					
12'-0"	12'-4 3/4"	12'-2 7/16"	11'-8 5/8"	4'-5 1/8"	14'-8 5/8"	5'-5 1/8"					
> 12'-0"	Contact local Andersen supplier										

Notes:

Details have been optimized for use in architectural software and do not match manufacturing specifications.
Dimensions in parentheses are in millimeters.

See Page 22 for Glazing Accessories

Date: 11/06/18
Scale: None

Chart 8.0		One-Directional - Four Panel									
Lock Jamb Depth = 11 11⁄16", O.A. Frame Depth = 1'-10 13⁄16", Pocket Depth = 2'-0 9⁄16"											
Panel Height	R.O. Height	Top of F.F. to Bottom of Header	Minimum Width			Maximum Width					
			R.O.	Pocket R.O.	R.O.	Pocket R.O.	R.O.	Pocket R.O.	R.O.	Pocket R.O.	
			Rated Non-Impact				Not Rated				
			Without Intermediate Stile				With Intermediate Stile				
< 6'-6"		Contact local Andersen supplier									
6'-6"	6'-10 3⁄4"	6'-8 7⁄16"	8'-1 1⁄8"	2'-7 1⁄8"	27'-5 1⁄8"	7'-5 1⁄8"	47'-3 1⁄8"	12'-5 1⁄8"	Contact local Andersen supplier	Contact local Andersen supplier	
7'-0"	7'-4 3⁄4"	7'-2 7⁄16"	8'-9 1⁄8"	2'-9 1⁄8"							
7'-6"	7'-10 3⁄4"	7'-8 7⁄16"	9'-5 1⁄8"	2'-11 1⁄8"							
8'-0"	8'-4 3⁄4"	8'-2 7⁄16"	10'-1 1⁄8"	3'-1 1⁄8"							
8'-6"	8'-10 3⁄4"	8'-8 7⁄16"	10'-9 1⁄8"	3'-3 1⁄8"	27'-5 1⁄8"	7'-5 1⁄8"					
9'-0"	9'-4 3⁄4"	9'-2 7⁄16"	11'-5 1⁄8"	3'-5 1⁄8"							
9'-6"	9'-10 3⁄4"	9'-8 7⁄16"	12'-1 1⁄8"	3'-7 1⁄8"							
10'-0"	10'-4 3⁄4"	10'-2 7⁄16"	12'-9 1⁄8"	3'-9 1⁄8"							
10'-6"	10'-10 3⁄4"	10'-8 7⁄16"	13'-5 1⁄8"	3'-11 1⁄8"							
11'-0"	11'-4 3⁄4"	11'-2 7⁄16"	14'-1 1⁄8"	4'-1 1⁄8"							
11'-6"	11'-10 3⁄4"	11'-8 7⁄16"	14'-9 1⁄8"	4'-3 1⁄8"							
12'-0"	12'-4 3⁄4"	12'-2 7⁄16"	15'-5 1⁄8"	4'-5 1⁄8"							
> 12'-0"		Contact local Andersen supplier									

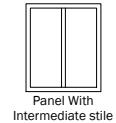
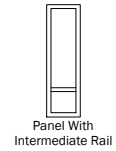
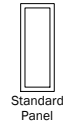


Chart 8.1		One-Directional - Five Panel										
Lock Jamb Depth = 1'-1 9/16", O.A. Frame Depth = 2'-4 3/8", Pocket Depth = 2'-6 1/8"												
Panel Height	R.O. Height	Top of F.F. to Bottom of Header	Minimum Width		Maximum Width							
			R.O.	Pocket R.O.	R.O.		Pocket R.O.	R.O.	Pocket R.O.	R.O.	Pocket R.O.	
			Rated Non-Impact				Not Rated					
Without Intermediate Stile								With Intermediate Stile				
< 6'-6"	Contact local Andersen supplier											
6'-6"	6'-10 3/4"	6'-8 7/16"	9'-11 5/8"	2'-7 1/8"	34'-1 5/8"	7'-5 1/8"	59'-1 5/8"	12'-5 1/8"	Contact local Andersen supplier	Contact local Andersen supplier		
7'-0"	7'-4 3/4"	7'-2 7/16"	10'-9 5/8"	2'-9 1/8"								
7'-6"	7'-10 3/4"	7'-8 7/16"	11'-7 5/8"	2'-11 1/8"								
8'-0"	8'-4 3/4"	8'-2 7/16"	12'-5 5/8"	3'-1 1/8"								
8'-6"	8'-10 3/4"	8'-8 7/16"	13'-3 5/8"	3'-3 1/8"								
9'-0"	9'-4 3/4"	9'-2 7/16"	14'-1 5/8"	3'-5 1/8"	31'-7 5/8"	6'-11 1/8"	34'-1 5/8"	7'-5 1/8"				
9'-6"	9'-10 3/4"	9'-8 7/16"	14'-11 5/8"	3'-7 5/8"	29'-11 5/8"	6'-7 1/8"						
10'-0"	10'-4 3/4"	10'-2 7/16"	15'-9 5/8"	3'-9 1/8"	29'-1 5/8"	6'-5 1/8"						
10'-6"	10'-10 3/4"	10'-8 7/16"	16'-7 5/8"	3'-11 1/8"	27'-5 5/8"	6'-1 1/8"						
11'-0"	11'-4 3/4"	11'-2 7/16"	17'-5 5/8"	4'-1 1/8"	26'-2 5/8"	5'-10 1/8"						
11'-6"	11'-10 3/4"	11'-8 7/16"	18'-3 5/8"	4'-3 1/8"	24'-11 5/8"	5'-7 1/8"						
12'-0"	12'-4 3/4"	12'-2 7/16"	19'-1 5/8"	4'-5 1/8"	24'-1 5/8"	5'-5 1/8"						
> 12'-0"	Contact local Andersen supplier											

Chart 8.2		One-Directional - Six Panel										
Lock Jamb Depth = 1'-3 3/8", O.A. Frame Depth = 2'-9 7/8", Pocket Depth = 2'-11 5/8"												
Panel Height	R.O. Height	Top of F.F. to Bottom of Header	Minimum Width		Maximum Width							
			R.O.	Pocket R.O.	R.O.		Pocket R.O.	R.O.	Pocket R.O.	R.O.	Pocket R.O.	
			Rated Non-Impact				Not Rated					
			Without Intermediate Stile						With Intermediate Stile			
< 6'-6"	Contact local Andersen supplier											
6'-6"	6'-10 3/4"	6'-8 7/16"	11'-10 1/8"	2'-7 1/8"	40'-10 1/8"	7'-5 1/8"	70'-10 1/8"	12'-5 1/8"	Contact local Andersen supplier	Contact local Andersen supplier		
7'-0"	7'-4 3/4"	7'-2 7/16"	12'-10 1/8"	2'-9 1/8"								
7'-6"	7'-10 3/4"	7'-8 7/16"	13'-10 1/8"	2'-11 1/8"								
8'-0"	8'-4 3/4"	8'-2 7/16"	14'-10 1/8"	3'-1 1/8"								
8'-6"	8'-10 3/4"	8'-8 7/16"	15'-10 1/8"	3'-3 3/8"	40'-10 1/8"	7'-5 1/8"						
9'-0"	9'-4 3/4"	9'-2 7/16"	16'-10 1/8"	3'-5 1/8"								
9'-6"	9'-10 3/4"	9'-8 7/16"	17'-10 1/8"	3'-7 7/8"								
10'-0"	10'-4 3/4"	10'-2 7/16"	18'-10 1/8"	3'-9 1/8"								
10'-6"	10'-10 3/4"	10'-8 7/16"	19'-10 1/8"	3'-11 1/8"								
11'-0"	11'-4 3/4"	11'-2 7/16"	20'-10 1/8"	4'-1 1/8"								
11'-6"	11'-10 3/4"	11'-8 7/16"	21'-10 1/8"	4'-3 3/8"								
12'-0"	12'-4 3/4"	12'-2 7/16"	22'-10 1/8"	4'-5 1/8"								
> 12'-0"	Contact local Andersen supplier											

Notes:

Details have been optimized for use in architectural software and do not match manufacturing specifications.
Dimensions in parentheses are in millimeters.

See Page 22 for Glazing Accessories

Date: 11/06/18
Scale: None

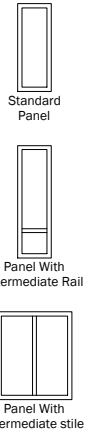


Chart 9.0		Two-Directional - Two Panel															
Frame Depth = 6 1/4", Pocket Depth = 8"																	
Panel Height	R.O. Height	Top of F.F. to Bottom of Header	Minimum Width			Maximum Width											
			R.O.	Pocket R.O.	R.O.	Pocket R.O.	R.O.	Pocket R.O.	R.O.	Pocket R.O.							
Rated Non-Impact			Not Rated														
Without Intermediate Stile			With Intermediate Stile														
< 6'-6"		Contact local Andersen supplier															
6'-6"	6'-10 3/4"	6'-8 7/16"	4'-7 7/16"	2'-7 1/8"	14'-3 7/16"	7'-5 1/8"	24'-3 7/16"	12'-5 1/8"	Contact local Andersen supplier	Contact local Andersen supplier							
7'-0"	7'-4 3/4"	7'-2 7/16"	4'-11 7/16"	2'-9 1/8"													
7'-6"	7'-10 3/4"	7'-8 7/16"	5'-3 1/16"	2'-11 1/8"													
8'-0"	8'-4 3/4"	8'-2 7/16"	5'-7 7/16"	3'-1 1/8"													
8'-6"	8'-10 3/4"	8'-8 7/16"	5'-11 7/16"	3'-3 3/8"	14'-3 7/16"	7'-5 1/8"	14'-3 7/16"	7'-5 1/8"									
9'-0"	9'-4 3/4"	9'-2 7/16"	6'-3 7/16"	3'-5 1/8"													
9'-6"	9'-10 3/4"	9'-8 7/16"	6'-7 7/16"	3'-7 1/8"													
10'-0"	10'-4 3/4"	10'-2 7/16"	6'-11 7/16"	3'-9 1/8"													
10'-6"	10'-10 3/4"	10'-8 7/16"	7'-3 7/16"	3'-11 1/8"													
11'-0"	11'-4 3/4"	11'-2 7/16"	7'-7 7/16"	4'-1 1/8"													
11'-6"	11'-10 3/4"	11'-8 7/16"	7'-11 7/16"	4'-3 1/8"													
12'-0"	12'-4 3/4"	12'-2 7/16"	8'-3 7/16"	4'-5 1/8"													
> 12'-0"		Contact local Andersen supplier															

Chart 9.1		Two-Directional - Four Panel										
Head Jamb Depth at Astragal = 8 ⁷ / ₁₆ " , O.A. Frame Depth = 11 ³ / ₄ " , Pocket Depth = 1'-1 ⁹ / ₁₆ "												
Panel Height	R.O. Height	Top of F.F. to Bottom of Header	Minimum Width		Maximum Width							
			R.O.	Pocket R.O.	R.O.		Pocket R.O.	R.O.	Pocket R.O.	R.O.	Pocket R.O.	
			Rated Non-Impact				Not Rated					
					Without Intermediate Stile					With Intermediate Stile		
Contact local Andersen supplier												
< 6'-6"												
6'-6"	6'-10 ³ / ₄ "	6'-8 ⁷ / ₁₆ "	8'-4 ⁷ / ₁₆ "	2'-7 ¹ / ₈ "	27'-8 ⁷ / ₁₆ "	7'-5 ¹ / ₈ "	47'-6 ⁷ / ₁₆ "	12'-5 ¹ / ₈ "	Contact local Andersen supplier	Contact local Andersen supplier		
7'-0"	7'-4 ³ / ₄ "	7'-2 ⁷ / ₁₆ "	9'-0 ⁷ / ₁₆ "	2'-9 ¹ / ₈ "								
7'-6"	7'-10 ³ / ₄ "	7'-8 ⁷ / ₁₆ "	9'-8 ⁷ / ₁₆ "	2'-11 ¹ / ₈ "								
8'-0"	8'-4 ³ / ₄ "	8'-2 ⁷ / ₁₆ "	10'-4 ⁷ / ₁₆ "	3'-1 ¹ / ₈ "								
8'-6"	8'-10 ³ / ₄ "	8'-8 ⁷ / ₁₆ "	11'-0 ⁷ / ₁₆ "	3'-3 ¹ / ₈ "								
9'-0"	9'-4 ³ / ₄ "	9'-2 ⁷ / ₁₆ "	11'-8 ⁷ / ₁₆ "	3'-5 ¹ / ₈ "	25'-8 ⁷ / ₁₆ "	6'-11 ¹ / ₈ "						
9'-6"	9'-10 ³ / ₄ "	9'-8 ⁷ / ₁₆ "	12'-4 ⁷ / ₁₆ "	3'-7 ¹ / ₈ "	24'-4 ⁷ / ₁₆ "	6'-7 ¹ / ₈ "						
10'-0"	10'-4 ³ / ₄ "	10'-2 ⁷ / ₁₆ "	13'-0 ⁷ / ₁₆ "	3'-9 ¹ / ₈ "	23'-8 ⁷ / ₁₆ "	6'-5 ¹ / ₈ "	27'-8 ⁷ / ₁₆ "	7'-5 ¹ / ₈ "				
10'-6"	10'-10 ³ / ₄ "	10'-8 ⁷ / ₁₆ "	13'-8 ⁷ / ₁₆ "	3'-11 ¹ / ₈ "	22'-4 ⁷ / ₁₆ "	6'-1 ¹ / ₈ "						
11'-0"	11'-4 ³ / ₄ "	11'-2 ⁷ / ₁₆ "	14'-4 ⁷ / ₁₆ "	4'-1 ¹ / ₈ "	21'-4 ⁷ / ₁₆ "	5'-10 ¹ / ₈ "						
11'-6"	11'-10 ³ / ₄ "	11'-8 ⁷ / ₁₆ "	15'-0 ⁷ / ₁₆ "	4'-3 ¹ / ₈ "	20'-4 ⁷ / ₁₆ "	5'-7 ¹ / ₈ "						
12'-0"	12'-4 ³ / ₄ "	12'-2 ⁷ / ₁₆ "	15'-8 ⁷ / ₁₆ "	4'-5 ¹ / ₈ "	19'-6 ⁷ / ₁₆ "	5'-5 ¹ / ₈ "						
> 12'-0"					Contact local Andersen supplier							

Chart 9.2		Two-Directional - Six Panel											
Head Jamb Depth at Astragal = 9 7/8", O.A. Frame Depth = 1'-5 5/16", Pocket Depth = 1'-7 1/16"													
Panel Height	R.O. Height	Top of F.F. to Bottom of Header	Minimum Width		Maximum Width								
			R.O.	Pocket R.O.	R.O.		Pocket R.O.	R.O.	Pocket R.O.	R.O.	Pocket R.O.		
			Rated Non-Impact							Not Rated			
			Without Intermediate Stile							With Intermediate Stile			
Contact local Andersen supplier													
6'-6"	6'-10 3/4"	6'-8 7/16"	12'-1 7/16"	2'-7 1/8"	41'-1 7/16"	7'-5 1/8"	71'-1 7/16"	12'-5 1/8"	Contact local Andersen supplier	Contact local Andersen supplier			
7'-0"	7'-4 3/4"	7'-2 7/16"	13'-1 7/16"	2'-9 1/8"			41'-1 7/16"	7'-5 1/8"					
7'-6"	7'-10 3/4"	7'-8 7/16"	14'-1 7/16"	2'-11 1/8"									
8'-0"	8'-4 3/4"	8'-2 7/16"	15'-1 7/16"	3'-1 1/8"									
8'-6"	8'-10 3/4"	8'-8 7/16"	16'-1 7/16"	3'-3 3/8"									
9'-0"	9'-4 3/4"	9'-2 7/16"	17'-1 7/16"	3'-5 3/8"									
9'-6"	9'-10 3/4"	9'-8 7/16"	18'-1 7/16"	3'-7 3/8"									
10'-0"	10'-4 3/4"	10'-2 7/16"	19'-1 7/16"	3'-9 3/8"									
10'-6"	10'-10 3/4"	10'-8 7/16"	20'-1 7/16"	3'-11 1/8"									
11'-0"	11'-4 3/4"	11'-2 7/16"	21'-1 7/16"	4'-1 1/8"									
11'-6"	11'-10 3/4"	11'-8 7/16"	22'-1 7/16"	4'-3 3/8"									
12'-0"	12'-4 3/4"	12'-2 7/16"	23'-1 7/16"	4'-5 1/8"									
> 12'-0"	Contact local Andersen supplier												

Notes:

Details have been optimized for use in architectural software and do not match manufacturing specifications.
Dimensions in parentheses are in millimeters.

See Page 22 for Glazing Accessories

Date: 11/06/18
Scale: None

Chart 10.0		Two-Directional - Eight Panel											
Head Jamb Depth at Astragal = 11 ¹¹ / ₁₆ ", O.A. Frame Depth = 1'-10 ¹³ / ₁₆ ", Pocket Depth = 2'-0 ⁹ / ₁₆ "													
Panel Height	R.O. Height	Top of F.F. to Bottom of Header	Minimum Width		Maximum Width								
			R.O.	Pocket R.O.	R.O.		Pocket R.O.	R.O.	Pocket R.O.	R.O.	Pocket R.O.		
			Rated Non-Impact				Not Rated						
			Without Intermediate Stile						With Intermediate Stile				
< 6'-6"		Contact local Andersen supplier											
6'-6"	6'-10 ³ / ₄ "	6'-8 ⁷ / ₁₆ "	15'-10 ⁷ / ₁₆ "	2'-7 ¹ / ₈ "	43'-9 ³ / ₄ "	6'-1"	94'-6 ⁷ / ₁₆ "	12'-5 ¹ / ₈ "	Contact local Andersen supplier	Contact local Andersen supplier			
7'-0"	7'-4 ³ / ₄ "	7'-2 ⁷ / ₁₆ "	17'-2 ⁷ / ₁₆ "	2'-9 ¹ / ₈ "									
7'-6"	7'-10 ³ / ₄ "	7'-8 ⁷ / ₁₆ "	18'-6 ⁷ / ₁₆ "	2'-11 ¹ / ₈ "									
8'-0"	8'-4 ³ / ₄ "	8'-2 ⁷ / ₁₆ "	19'-10 ⁷ / ₁₆ "	3'-1 ¹ / ₈ "									
8'-6"	8'-10 ³ / ₄ "	8'-8 ⁷ / ₁₆ "	21'-2 ⁷ / ₁₆ "	3'-3 ¹ / ₈ "									
9'-0"	9'-4 ³ / ₄ "	9'-2 ⁷ / ₁₆ "	22'-6 ⁷ / ₁₆ "	3'-5 ¹ / ₈ "									
9'-6"	9'-10 ³ / ₄ "	9'-8 ⁷ / ₁₆ "	23'-10 ⁷ / ₁₆ "	3'-7 ¹ / ₈ "									
10'-0"	10'-4 ³ / ₄ "	10'-2 ⁷ / ₁₆ "	25'-2 ⁷ / ₁₆ "	3'-9 ¹ / ₈ "									
10'-6"	10'-10 ³ / ₄ "	10'-8 ⁷ / ₁₆ "	26'-6 ⁷ / ₁₆ "	3'-11 ¹ / ₈ "									
11'-0"	11'-4 ³ / ₄ "	11'-2 ⁷ / ₁₆ "	27'-10 ⁷ / ₁₆ "	4'-1 ¹ / ₈ "							41'-10 ⁷ / ₁₆ "	5'-10 ¹ / ₈ "	
11'-6"	11'-10 ³ / ₄ "	11'-8 ⁷ / ₁₆ "	29'-2 ⁷ / ₁₆ "	4'-3 ¹ / ₈ "	39'-10 ⁷ / ₁₆ "	5'-7 ¹ / ₈ "							
12'-0"	12'-4 ³ / ₄ "	12'-2 ⁷ / ₁₆ "	30'-6 ⁷ / ₁₆ "	4'-5 ¹ / ₈ "	38'-6 ⁷ / ₁₆ "	5'-5 ¹ / ₈ "							
> 12'-0"		Contact local Andersen supplier											

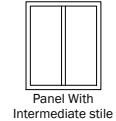
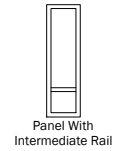
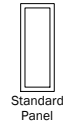


Chart 10.1		Two-Directional - Ten Panel									
Head Jamb Depth at Astragal = 1'-1 9/16", O.A. Frame Depth = 2'-4 3/8", Pocket Depth = 2'-6 1/8"											
Panel Height	R.O. Height	Top of F.F. to Bottom of Header	Minimum Width		Maximum Width						
			R.O.	Pocket R.O.	R.O.		Pocket R.O.	R.O.		Pocket R.O.	
			Rated Non-Impact				Not Rated				
			Without Intermediate Stile						With Intermediate Stile		
Contact local Andersen supplier											
< 6'-6"											
6'-6"	6'-10 3/4"	6'-8 7/16"	19'-7 7/16"	2'-7 1/8"	43'-9 3/4"	5'-0 1/8"	117'-11 7/16"	12'-5 1/8"	Contact local Andersen supplier	Contact local Andersen supplier	
7'-0"	7'-4 3/4"	7'-2 7/16"	21'-3 7/16"	2'-9 1/8"							
7'-6"	7'-10 3/4"	7'-8 7/16"	22'-11 7/16"	2'-11 1/8"							
8'-0"	8'-4 3/4"	8'-2 7/16"	24'-7 7/16"	3'-1 1/8"							
8'-6"	8'-10 3/4"	8'-8 7/16"	26'-3 7/16"	3'-3 1/8"							
9'-0"	9'-4 3/4"	9'-2 7/16"	27'-11 7/16"	3'-5 1/8"							
9'-6"	9'-10 3/4"	9'-8 7/16"	29'-7 7/16"	3'-7 1/8"							
10'-0"	10'-4 3/4"	10'-2 7/16"	31'-3 7/16"	3'-9 1/8"							
10'-6"	10'-10 3/4"	10'-8 7/16"	32'-11 7/16"	3'-11 1/8"							
11'-0"	11'-4 3/4"	11'-2 7/16"	34'-7 7/16"	4'-1 1/8"							
11'-6"	11'-10 3/4"	11'-8 7/16"	36'-3 7/16"	4'-3 1/8"							
12'-0"	12'-4 3/4"	12'-2 7/16"	37'-11 7/16"	4'-5 1/8"							
> 12'-0"					Contact local Andersen supplier						

Chart 10.2		Two-Directional - Twelve Panel												
Head Jamb Depth at Astragal = 1'-3 3/8", O.A. Frame Depth = 2'-9 7/8", Pocket Depth = 2'-11 5/8"														
Panel Height	R.O. Height	Top of F.F. to Bottom of Header	Minimum Width		Maximum Width									
			R.O.	Pocket R.O.	R.O.		Pocket R.O.		R.O.	Pocket R.O.	R.O.	Pocket R.O.		
			Rated Non-Impact								Not Rated			
			Without Intermediate Stile						With Intermediate Stile					
< 6'-6"		Contact local Andersen supplier												
6'-6"	6'-10 3/4"	6'-8 7/16"	23'-4 7/16"	2'-7 1/8"	43'-9 3/4"	4'-3 9/16"	141'-4 7/16"	12'-5 1/8"	Contact local Andersen supplier	Contact local Andersen supplier				
7'-0"	7'-4 3/4"	7'-2 7/16"	25'-4 7/16"	2'-9 1/8"			81'-4 7/16"	7'-5 1/8"						
7'-6"	7'-10 3/4"	7'-8 7/16"	27'-4 7/16"	2'-11 1/8"										
8'-0"	8'-4 3/4"	8'-2 7/16"	29'-4 7/16"	3'-1 1/8"										
8'-6"	8'-10 3/4"	8'-8 7/16"	31'-4 7/16"	3'-3 1/8"										
9'-0"	9'-4 3/4"	9'-2 7/16"	33'-4 7/16"	3'-5 1/8"										
9'-6"	9'-10 3/4"	9'-8 7/16"	35'-4 7/16"	3'-7 1/8"										
10'-0"	10'-4 3/4"	10'-2 7/16"	37'-4 7/16"	3'-9 1/8"										
10'-6"	10'-10 3/4"	10'-8 7/16"	39'-4 7/16"	3'-11 1/8"										
11'-0"	11'-4 3/4"	11'-2 7/16"	41'-4 7/16"	4'-1 1/8"										
11'-6"	11'-10 3/4"	11'-8 7/16"	43'-4 7/16"	4'-3 1/8"										
12'-0"	12'-4 3/4"	12'-2 7/16"	45'-4 7/16"	4'-5 1/8"										
> 12'-0"		Contact local Andersen supplier												

Notes:

Details have been optimized for use in architectural software and do not match manufacturing specifications.
Dimensions in parentheses are in millimeters.

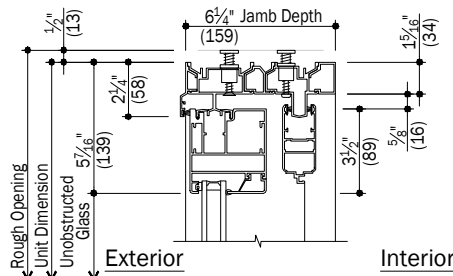
See Page 22 for Glazing Accessories

Date: 11/06/18
Scale: None

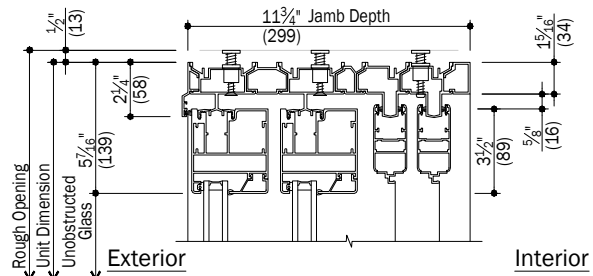
Big Doors

Weiland™ Pocket Liftslide
Aluminum - With Multiple Screens

Andersen®
ARCHITECTURAL
COLLECTION

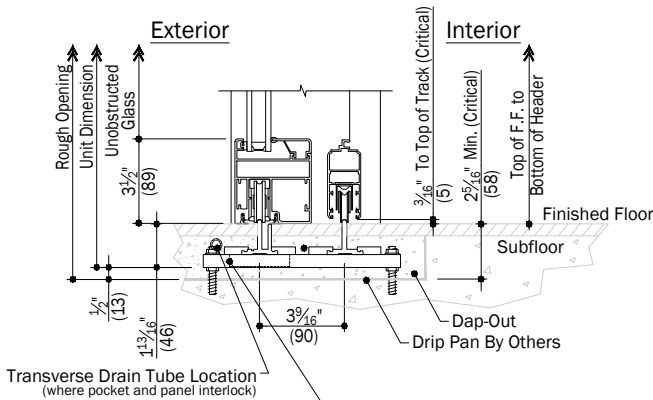


IMPORTANT
For more detailed information pertaining to product application. See the **Weiland® Liftslide Site Prep Guide.**

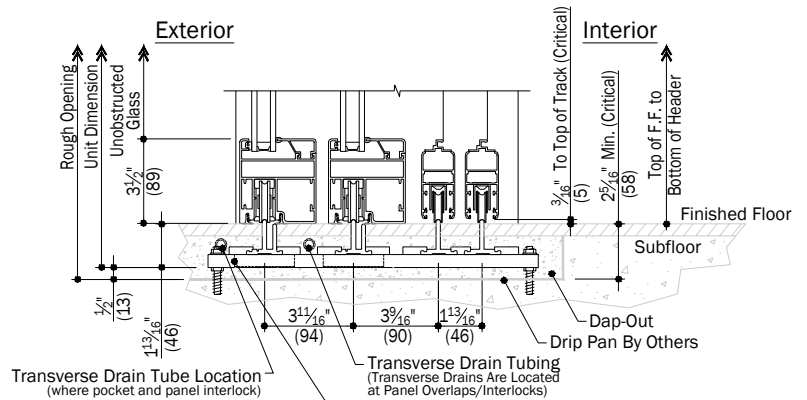


A Head
11 2 Track System

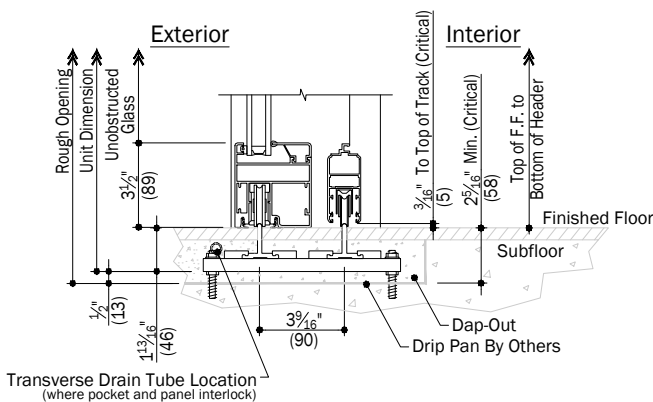
D Head
11 4 Track System



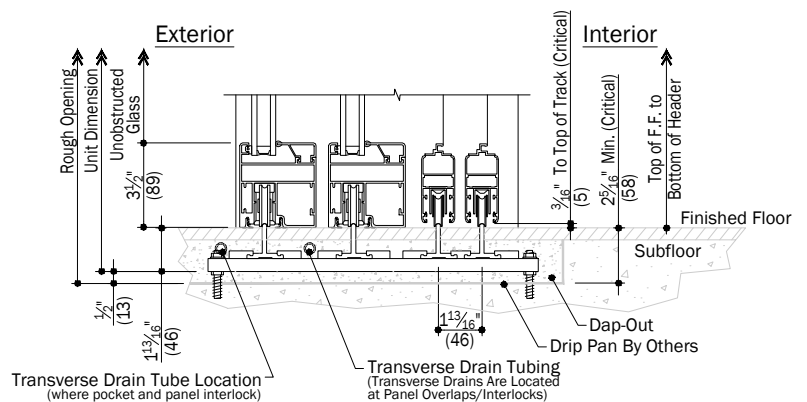
B Full Drainage Flush Sill
11 2 Track System



E Full Drainage Flush Sill
11 4 Track System



C Flush Sill
11 2 Track System



F Flush Sill
11 4 Track System

Notes:

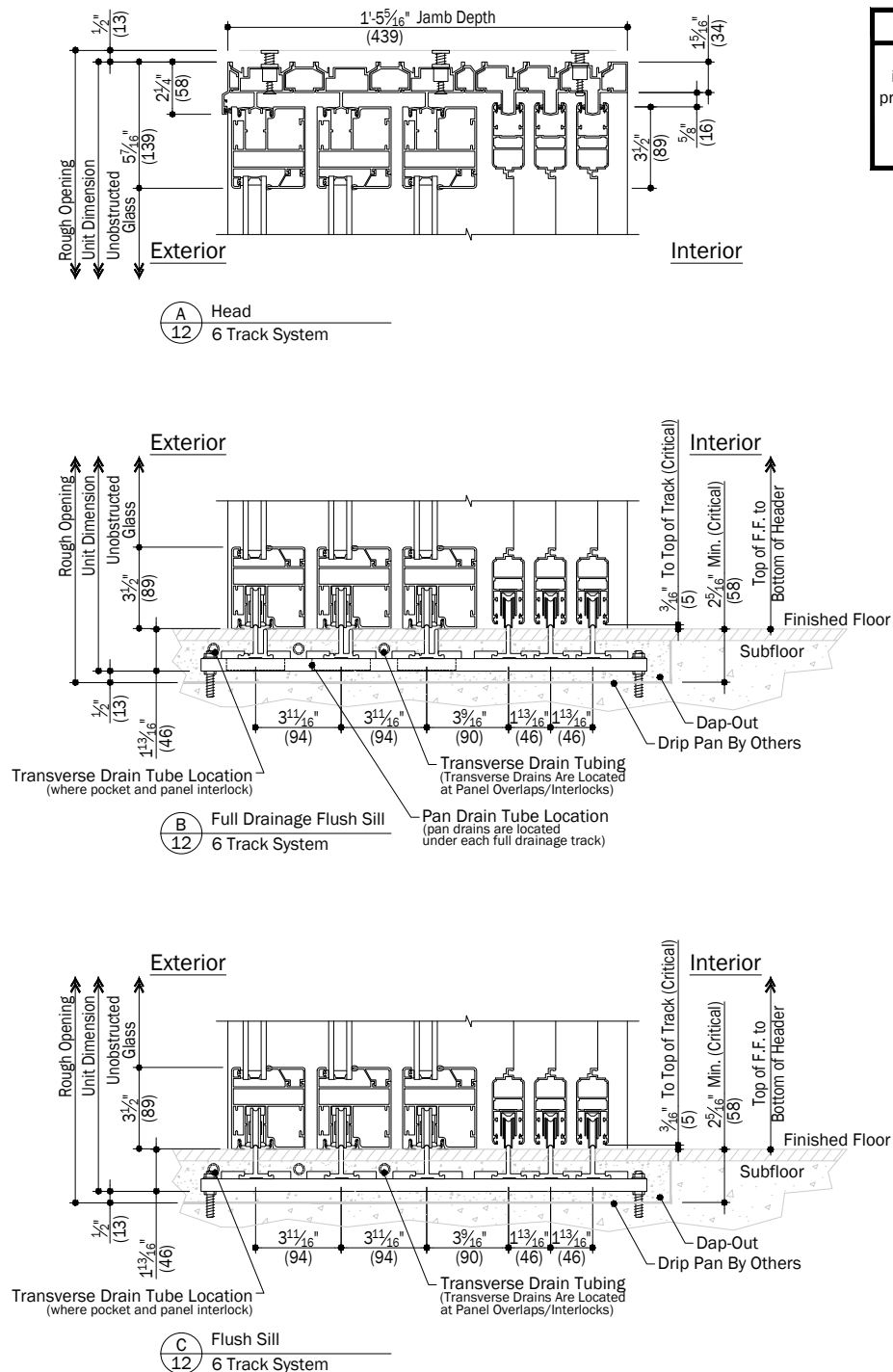
Details have been optimized for use in architectural software and do not match manufacturing specifications. Dimensions in parentheses are in millimeters.

See Page 22 for Glazing Accessories

Date: 11/06/18
Scale: 1 1/2" (38) = 1' (305)

IMPORTANT

For more detailed information pertaining to product application. See the **Weiland® Liftslide Site Prep Guide.**



Notes:

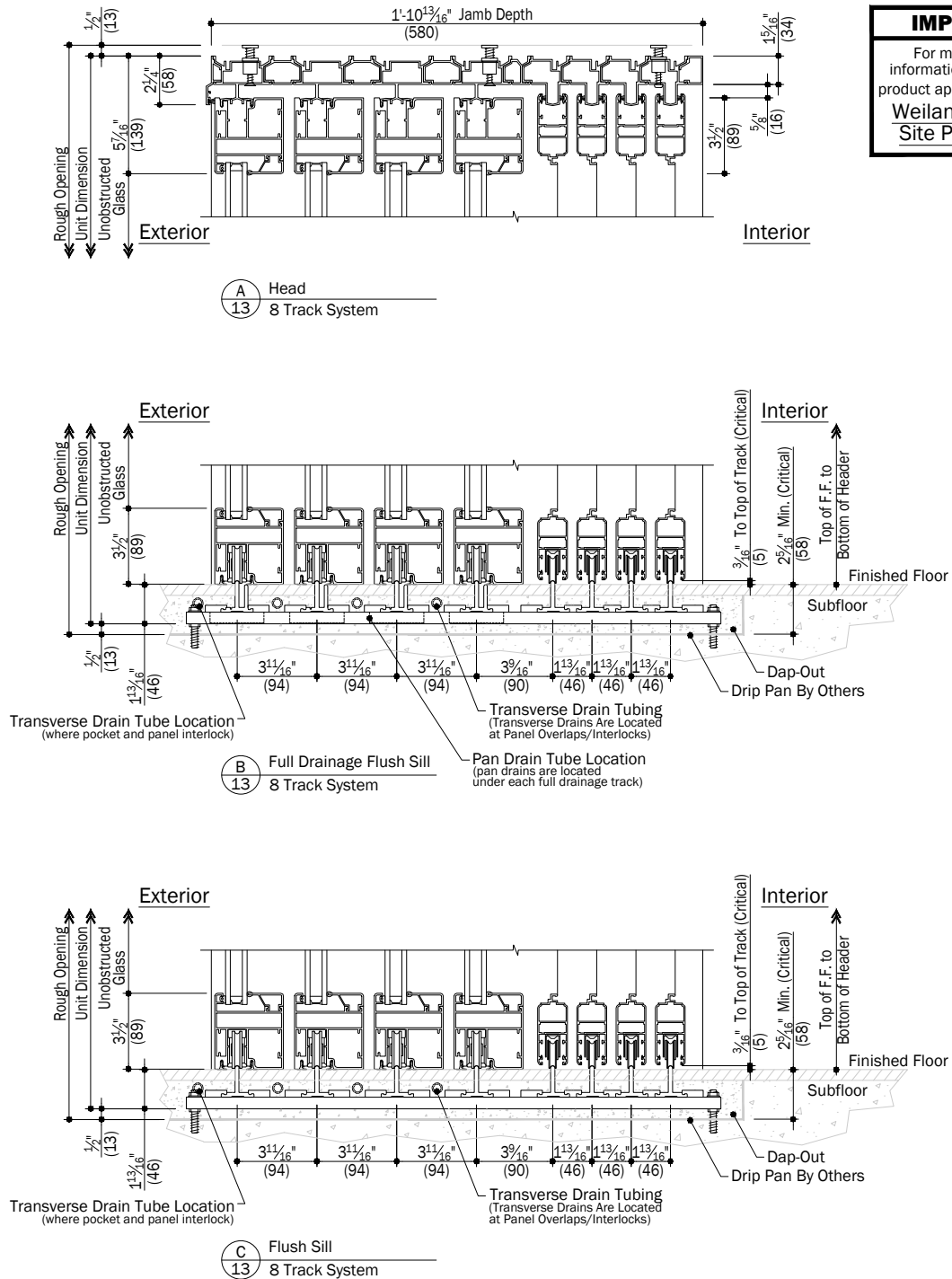
Details have been optimized for use in architectural software and do not match manufacturing specifications. Dimensions in parentheses are in millimeters.

See Page 22 for Glazing Accessories

Date: 11/06/18
Scale: 1 1/2" (38) = 1' (305)

IMPORTANT

For more detailed information pertaining to product application. See the **Weiland® Liftslide Site Prep Guide.**



Notes:

Details have been optimized for use in architectural software and do not match manufacturing specifications. Dimensions in parentheses are in millimeters.

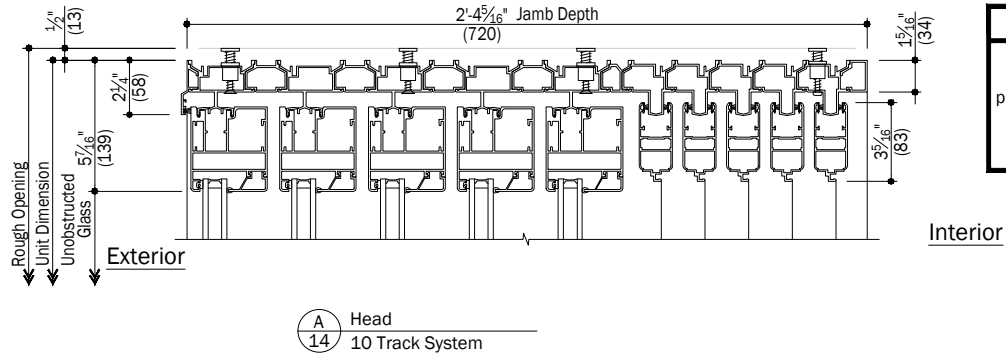
See Page 22 for Glazing Accessories

Date: 11/06/18
Scale: 1 1/2" (38) = 1' (305)

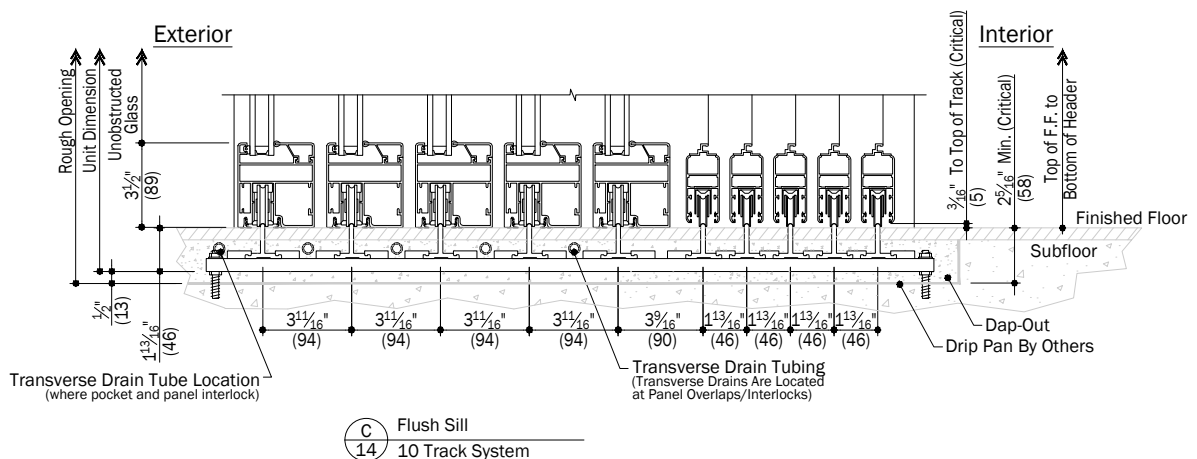
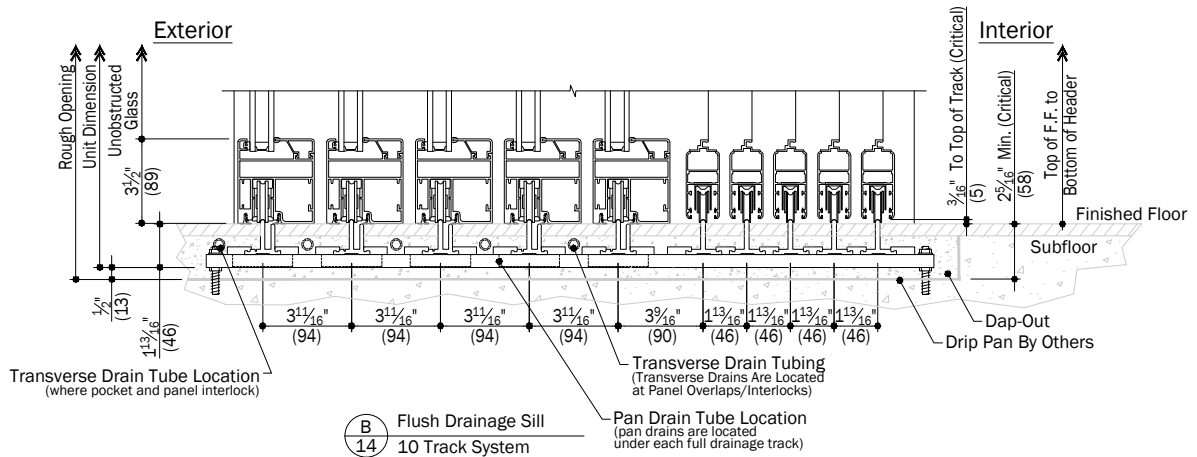
Big Doors

Weiland™ Pocket Liftslide
Aluminum - With Multiple Screens

Andersen®
ARCHITECTURAL
COLLECTION



IMPORTANT
For more detailed
information pertaining to
product application. See the
Weiland® Liftslide
Site Prep Guide.



Notes:

Details have been optimized for use in architectural software and do not match manufacturing specifications.
Dimensions in parentheses are in millimeters.

See Page 22 for Glazing Accessories

Date: 11/06/18
Scale: 1 1/2" (38) = 1' (305)

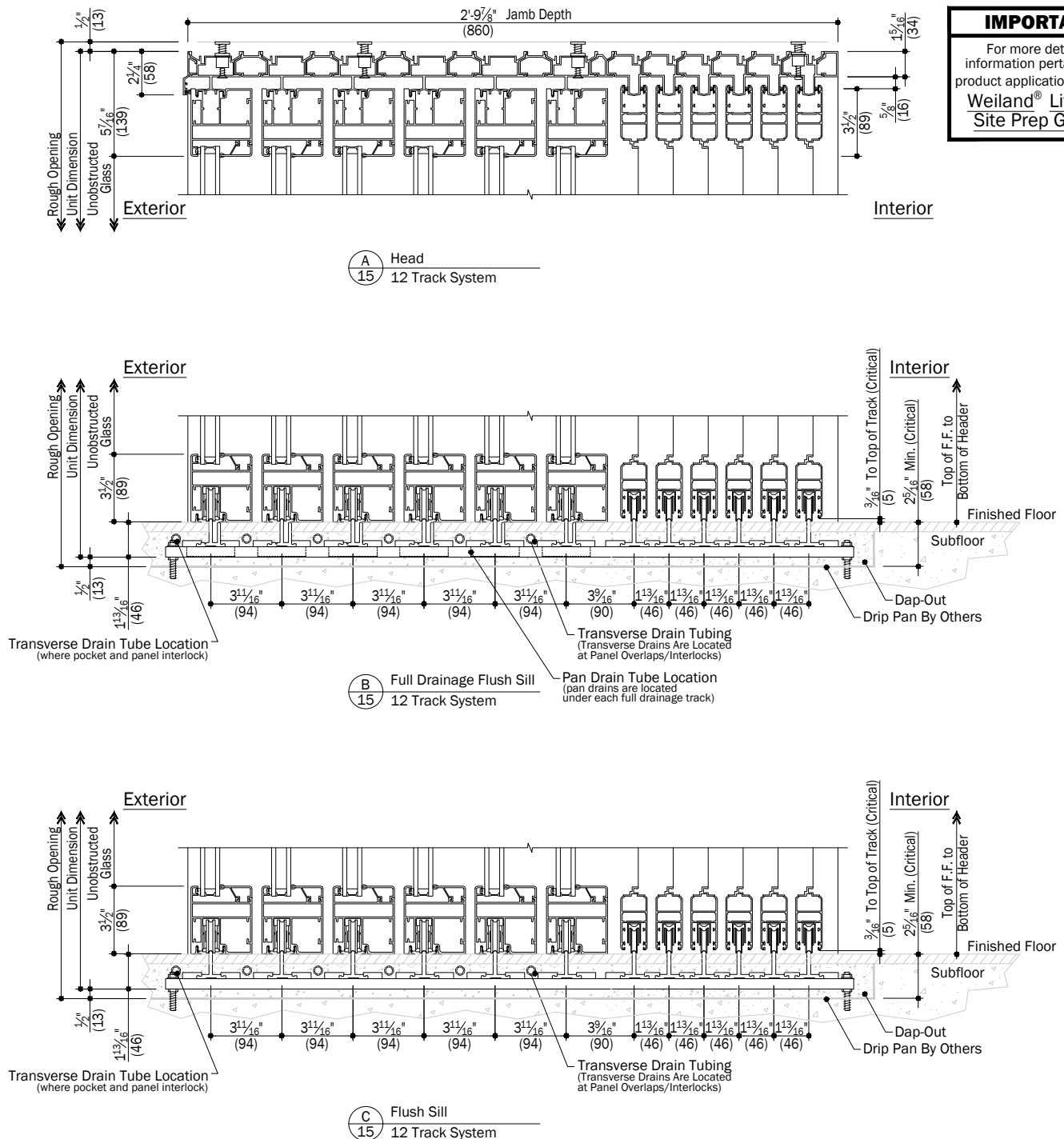
Big Doors

Weiland™ Pocket Liftslide
Aluminum - With Multiple Screens

Andersen®
ARCHITECTURAL
COLLECTION

IMPORTANT

For more detailed information pertaining to product application. See the **Weiland® Liftslide Site Prep Guide.**



Notes:

Details have been optimized for use in architectural software and do not match manufacturing specifications. Dimensions in parentheses are in millimeters.

See Page 22 for Glazing Accessories

Date: 11/06/18
Scale: 1 1/2" (38) = 1' (305)

Andersen Windows, Inc. reserves the right to change drawing specifications without notice

File: AC Big Doors Sections Liftslide AL-P-MS Page 15 of 22

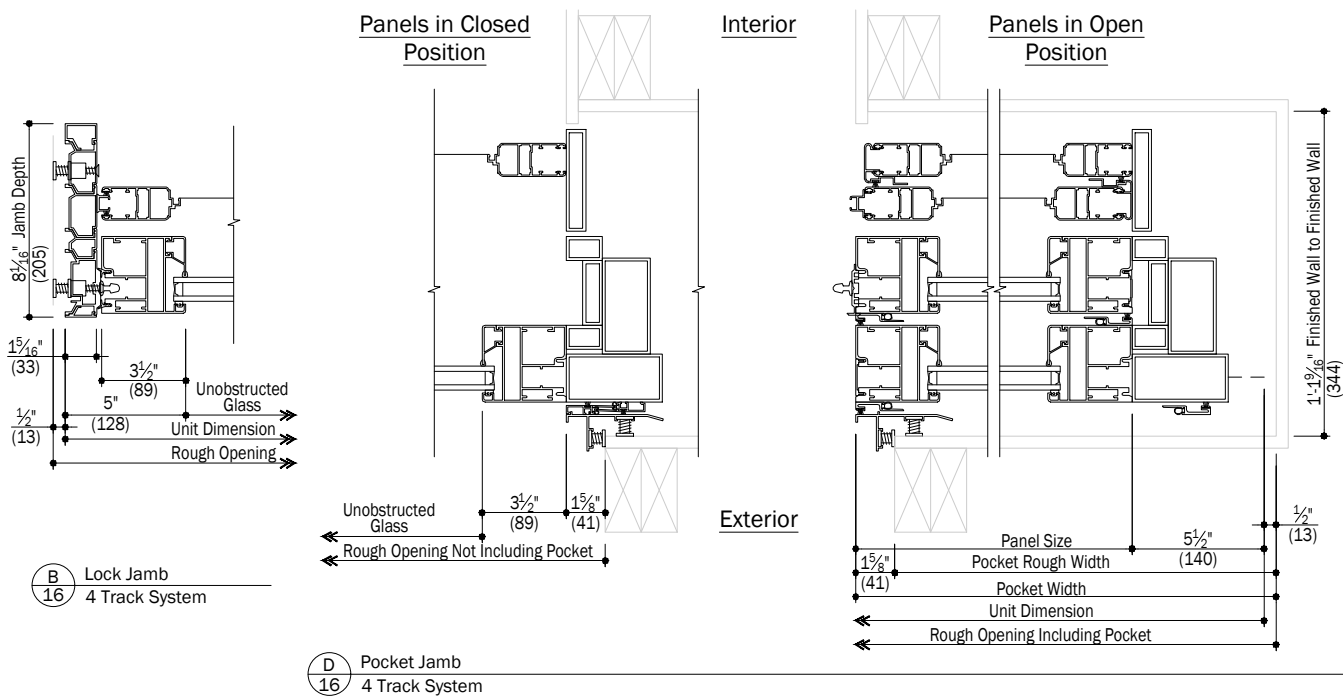
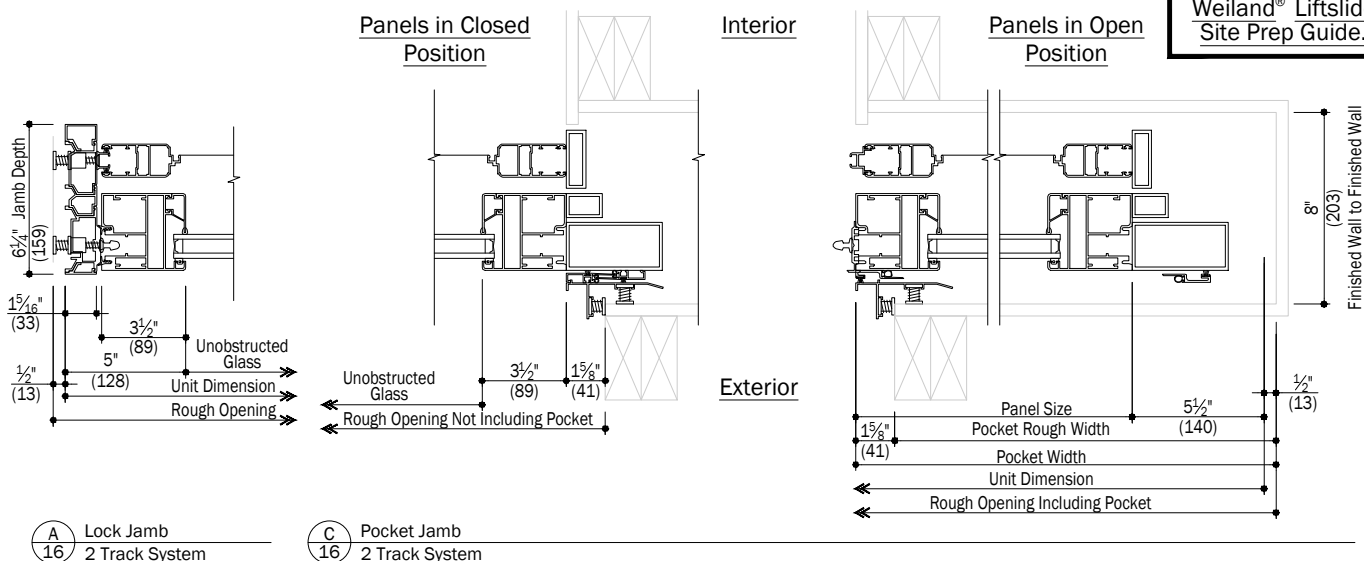
Big Doors

Weiland™ Pocket Liftslide
Aluminum - With Multiple Screens

Andersen®
ARCHITECTURAL
COLLECTION

IMPORTANT

For more detailed information pertaining to product application. See the Weiland® Liftslide Site Prep Guide.



Notes:

Details have been optimized for use in architectural software and do not match manufacturing specifications. Dimensions in parentheses are in millimeters.

See Page 22 for Glazing Accessories

Date: 11/06/18
Scale: 1 1/2" (38) = 1' (305)

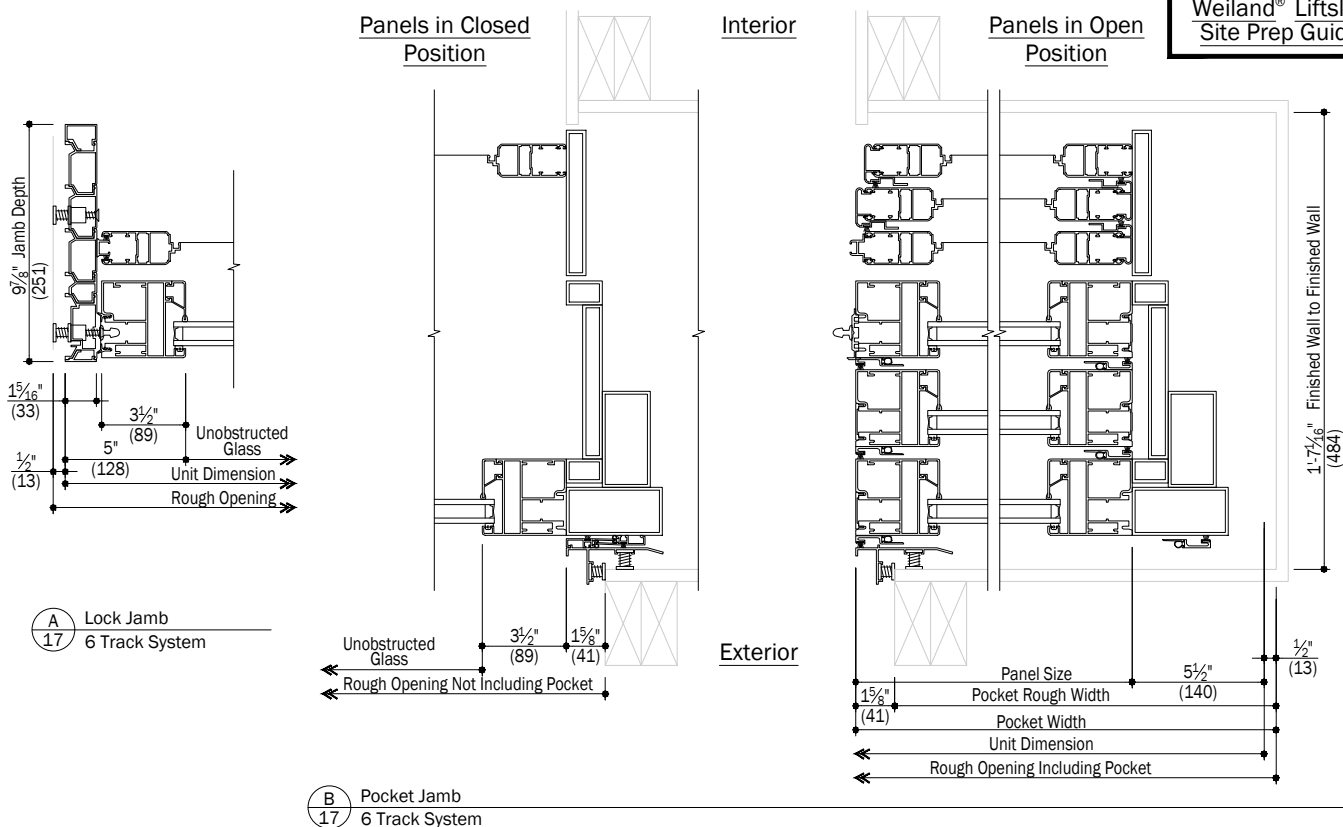
Big Doors

Weiland™ Pocket Liftslide
Aluminum - With Multiple Screens

Andersen®
ARCHITECTURAL
COLLECTION

IMPORTANT

For more detailed
information pertaining to
product application. See the
**Weiland® Liftslide
Site Prep Guide.**



Notes:

Details have been optimized for use in architectural software and do not match manufacturing specifications.
Dimensions in parentheses are in millimeters.

See Page 22 for Glazing Accessories

Date: 11/06/18
Scale: 1 1/2" (38) = 1' (305)

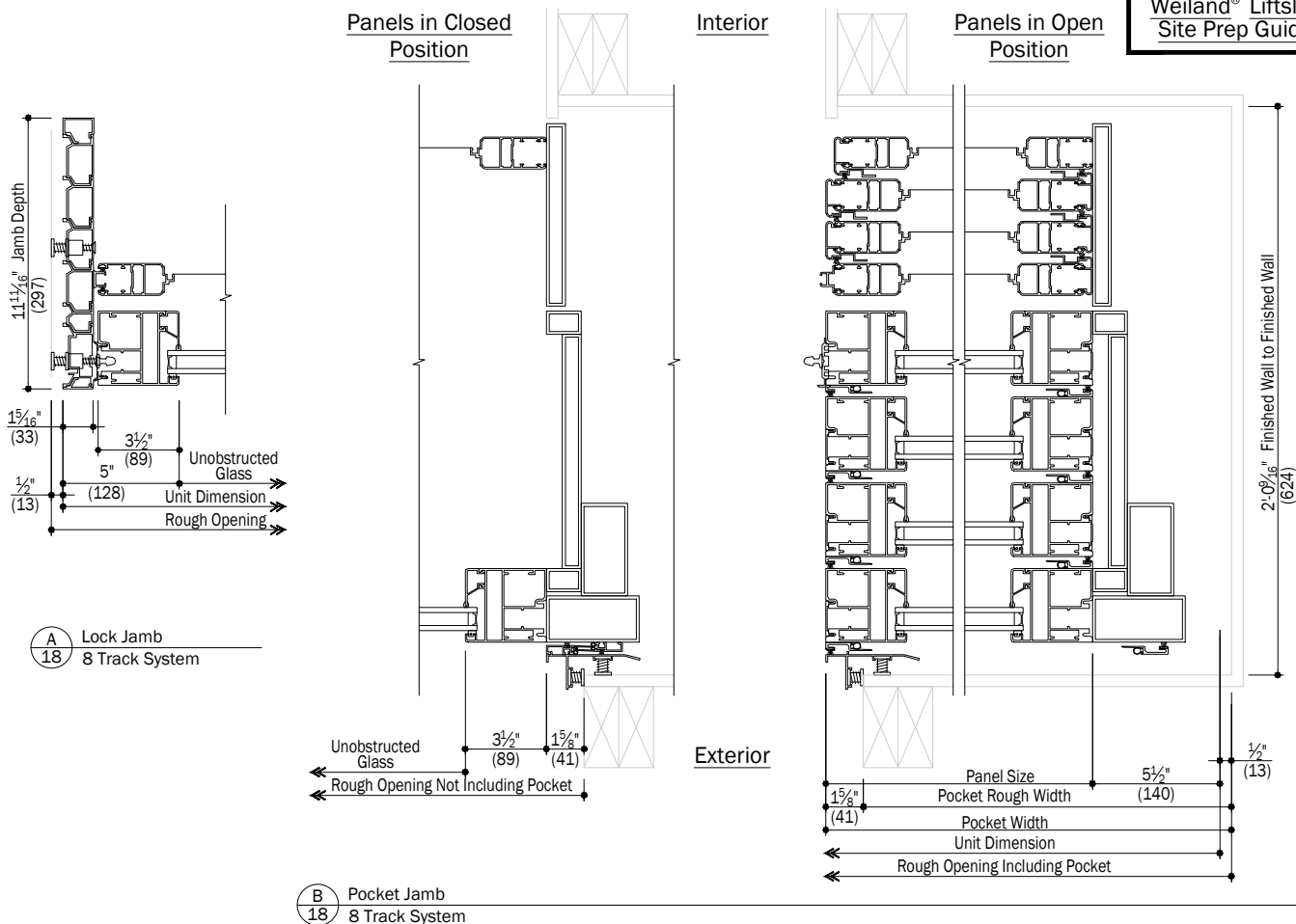
Big Doors

Weiland™ Pocket Liftslide
Aluminum - With Multiple Screens



IMPORTANT

For more detailed information pertaining to product application. See the Weiland® Liftslide Site Prep Guide.



Notes:

Details have been optimized for use in architectural software and do not match manufacturing specifications. Dimensions in parentheses are in millimeters.

See Page 22 for Glazing Accessories

Date: 11/06/18
Scale: 1 1/2" (38) = 1' (305)

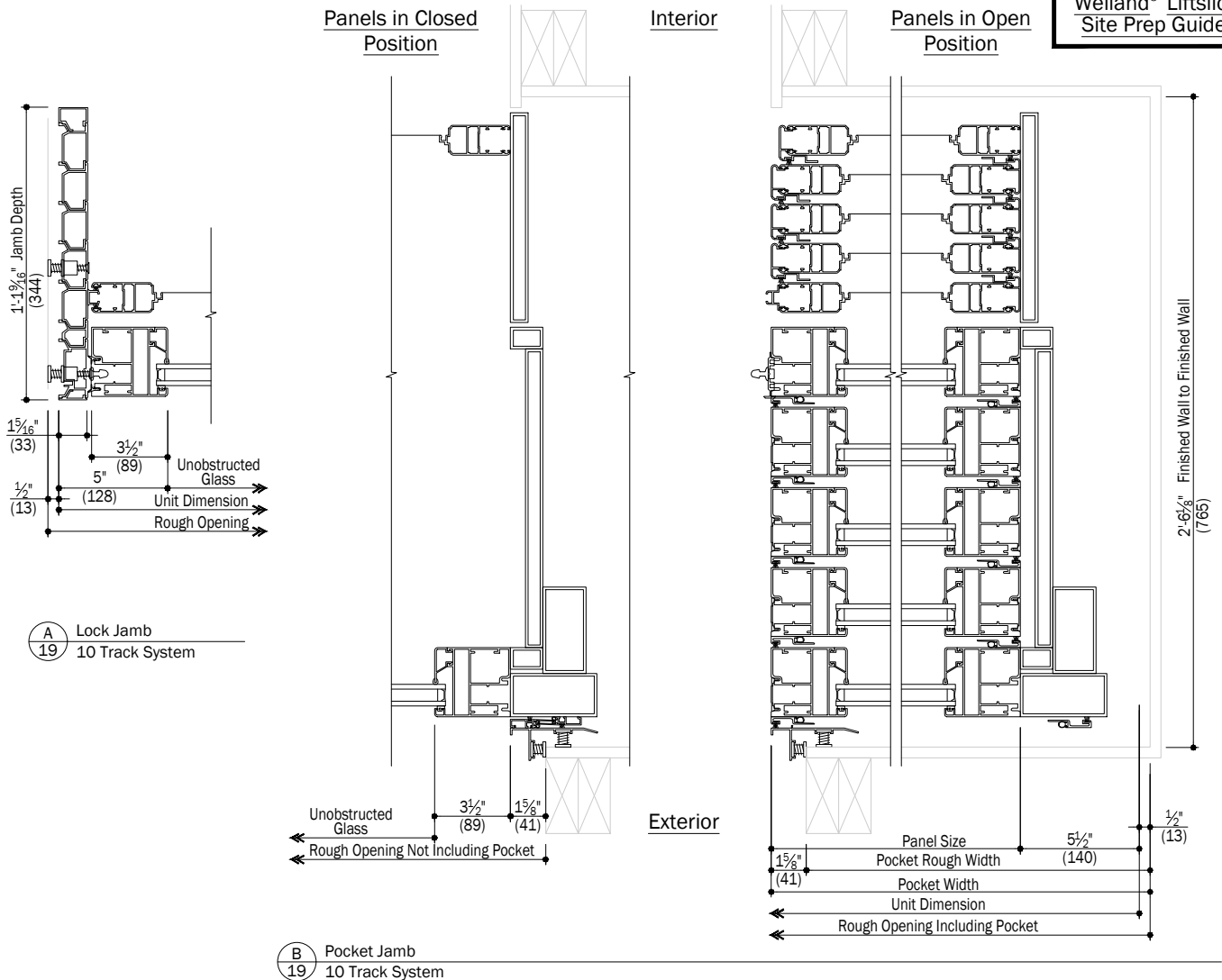
Big Doors

Weiland™ Pocket Liftslide
Aluminum - With Multiple Screens



IMPORTANT

For more detailed information pertaining to product application. See the Weiland® Liftslide Site Prep Guide.



Notes:

Details have been optimized for use in architectural software and do not match manufacturing specifications. Dimensions in parentheses are in millimeters.

See Page 22 for Glazing Accessories

Date: 11/06/18
Scale: 1 1/2" (38) = 1' (305)

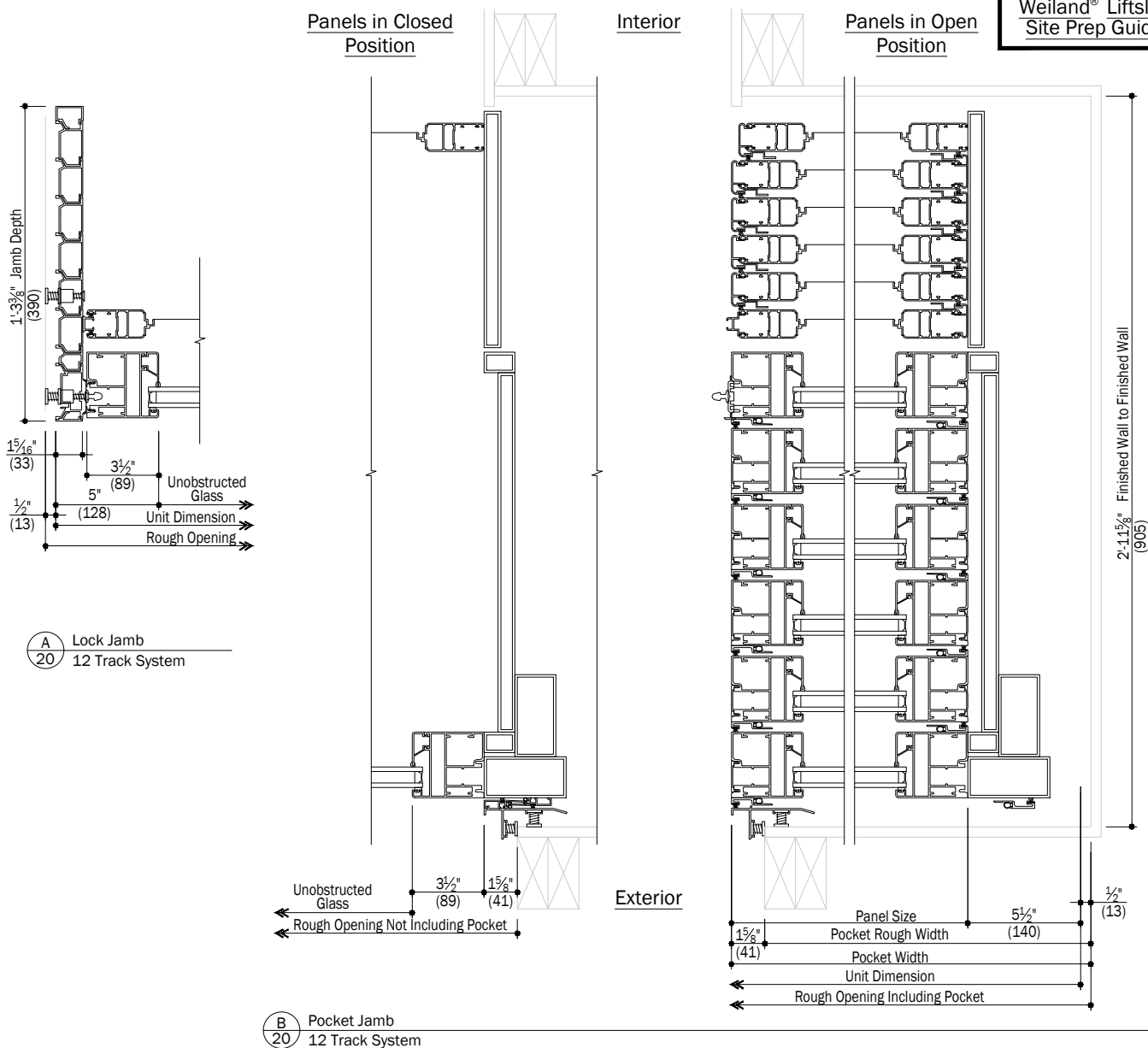
Big Doors

Weiland™ Pocket Liftslide
Aluminum - With Multiple Screens

Andersen®
ARCHITECTURAL
COLLECTION

IMPORTANT

For more detailed information pertaining to product application. See the Weiland® Liftslide Site Prep Guide.



Notes:

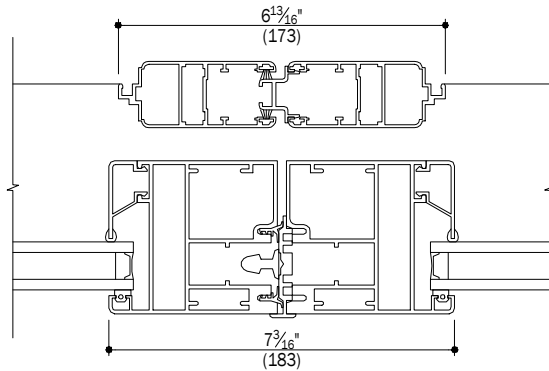
Details have been optimized for use in architectural software and do not match manufacturing specifications. Dimensions in parentheses are in millimeters.

See Page 22 for Glazing Accessories

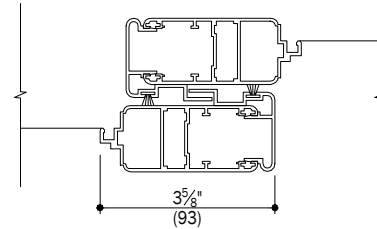
Date: 11/06/18
Scale: 1 1/2" (38) = 1' (305)

Big Doors

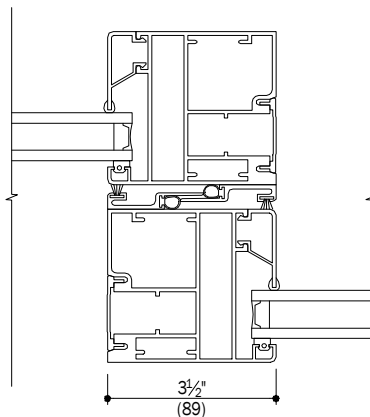
Weiland™ Pocket Liftslide
Aluminum - With Multiple Screens



A
21 Astragal



C
21 Screen Interlock



B
21 Panel Interlock

Notes:

Details have been optimized for use in architectural software and do not match manufacturing specifications.
Dimensions in parentheses are in millimeters.

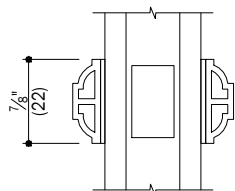
See Page 22 for Glazing Accessories

Date: 11/06/18
Scale: 3" (76) = 1' (305)

Big Doors

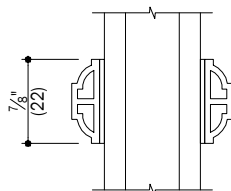
Weiland™ Pocket Liftslide
Aluminum - With Multiple Screens

Andersen®
ARCHITECTURAL
COLLECTION



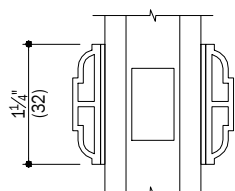
Full Divided Light
7/8" Ovolo (Colonial) Grille Profile

A
22



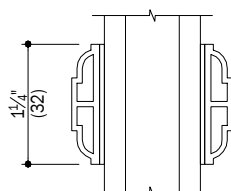
Simulated Divided Light
7/8" Ovolo (Colonial) Grille Profile

E
22



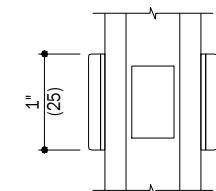
Full Divided Light
1 1/4" Ovolo (Colonial) Grille Profile

B
22



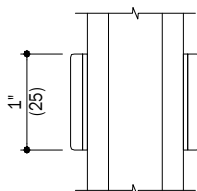
Simulated Divided Light
1 1/4" Ovolo (Colonial) Grille Profile

F
22



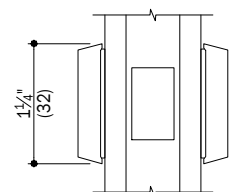
Full Divided Light
1" Squared Grille Profile
Available as exterior grille bar only

C
22



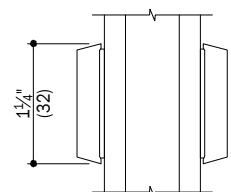
Simulated Divided Light
1" Squared Grille Profile
Available as exterior grille bar only

G
22



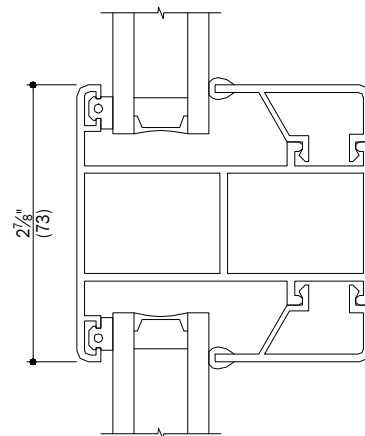
Full Divided Light
1 1/4" Contemporary Grille Profile

D
22

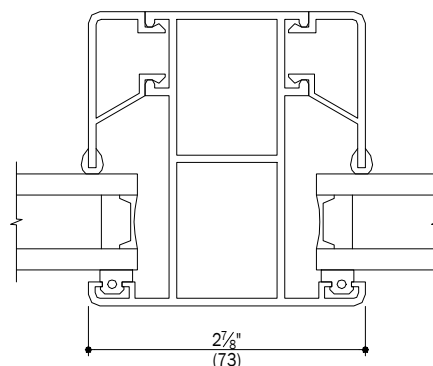


Simulated Divided Light
1 1/4" Contemporary Grille Profile

H
22



J
22 Intermediate Rail



K
22 Intermediate Stile

Notes:

Details have been optimized for use in architectural software and do not match manufacturing specifications.
Dimensions in parentheses are in millimeters.