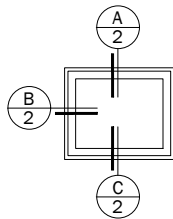
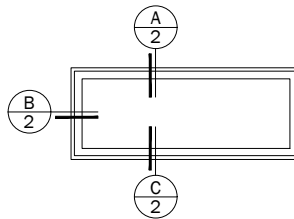


A-Series

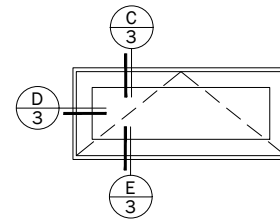
Patio Door - Sidelight & Transom
Traditional Panel



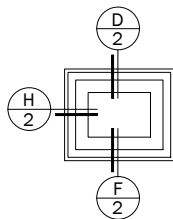
Patio Door Sidelight Transom
Direct Set



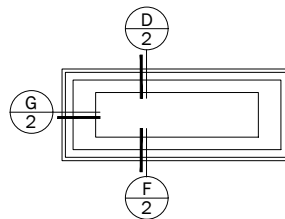
Patio Door Transom
Single - Direct Set



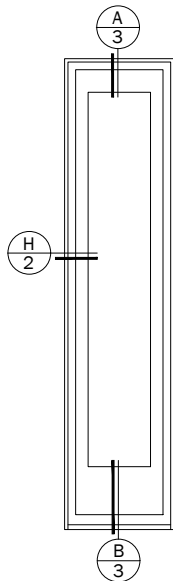
Patio Door Transom
Venting



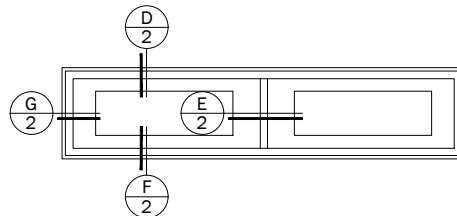
Patio Door Sidelight Transom
Sash Set



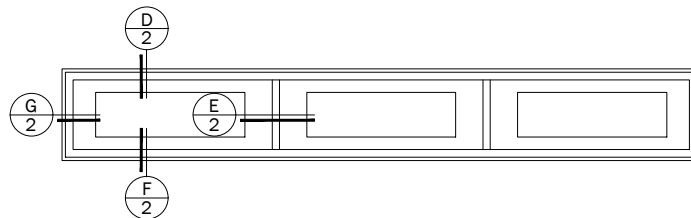
Patio Door Transom
Single - Sash Set



Patio Door Sidelight
Traditional Panel



Patio Door Transom
Double - Sash Set



Patio Door Transom
Triple - Sash Set

Notes:

Details have been optimized for use in architectural software and do not match manufacturing specifications.

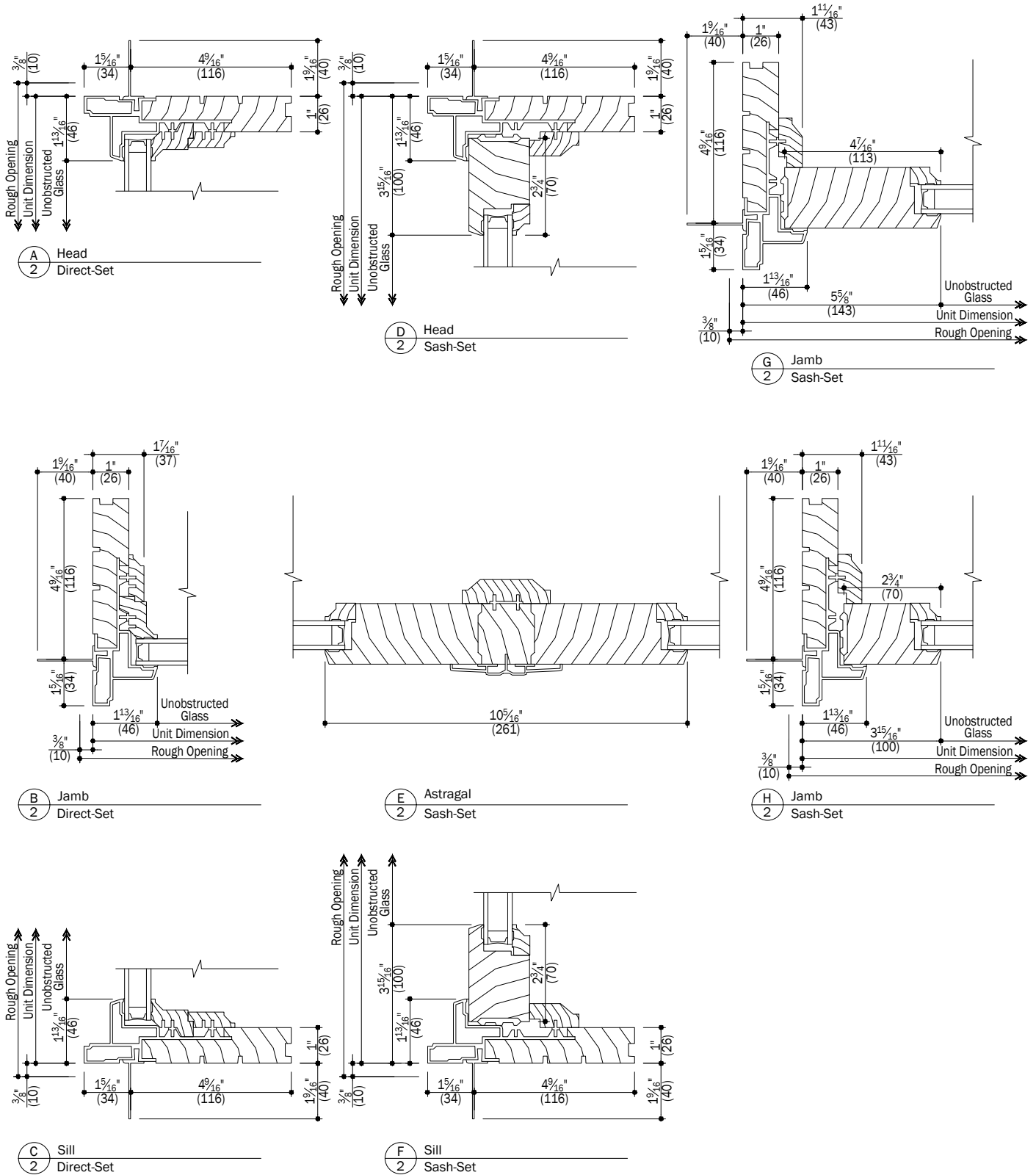
Dimensions in parentheses are in millimeters.

Andersen Windows, Inc. reserves the right to change drawing specifications without notice.

Date: 02/28/23

A-Series

Patio Door - Sidelight & Transom
Traditional Panel



Scale: 3" (76) = 1' (305)

Notes:

Details have been optimized for use in architectural software and do not match manufacturing specifications.

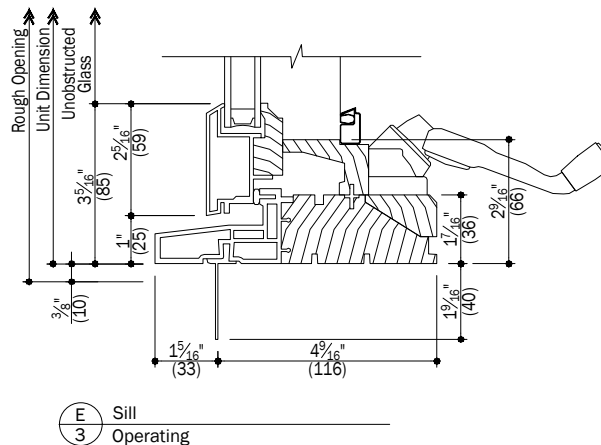
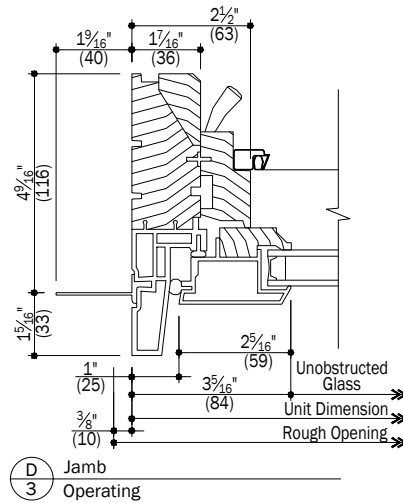
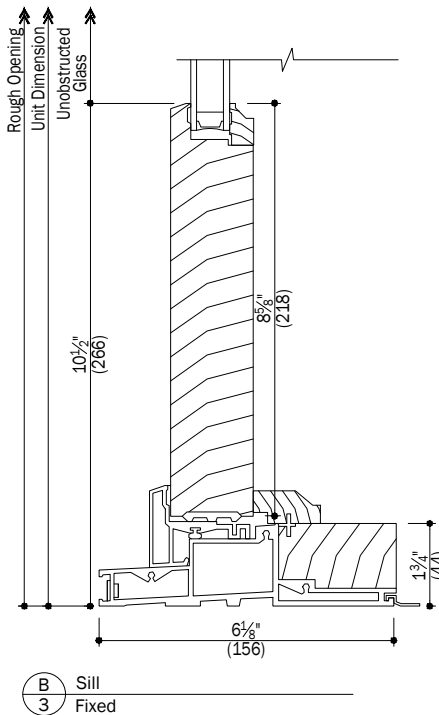
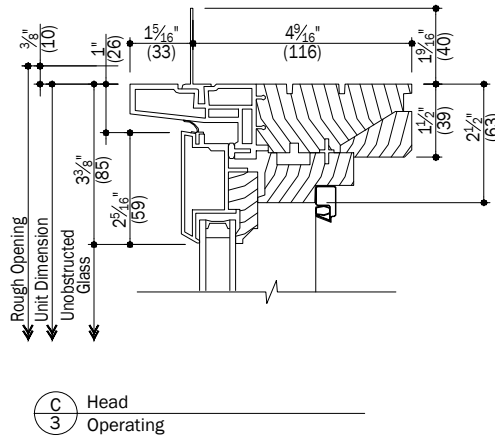
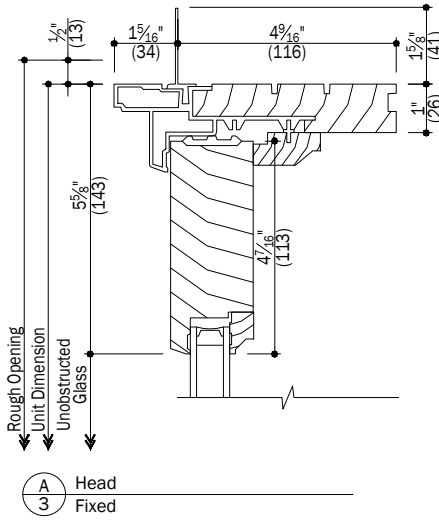
Dimensions in parentheses are in millimeters.

Andersen Windows, Inc. reserves the right to change drawing specifications without notice.

Date: 02/28/23

A-Series

Patio Door - Sidelight & Transom
Traditional Panel



Scale: 3" (76) = 1' (305)

Notes:

Details have been optimized for use in architectural software and do not match manufacturing specifications.

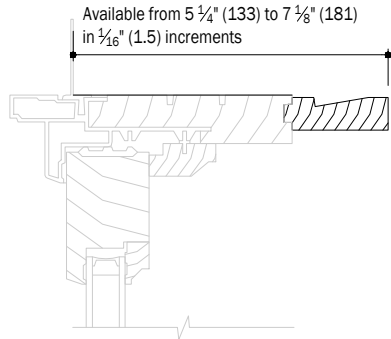
Dimensions in parentheses are in millimeters.

Andersen Windows, Inc. reserves the right to change drawing specifications without notice.

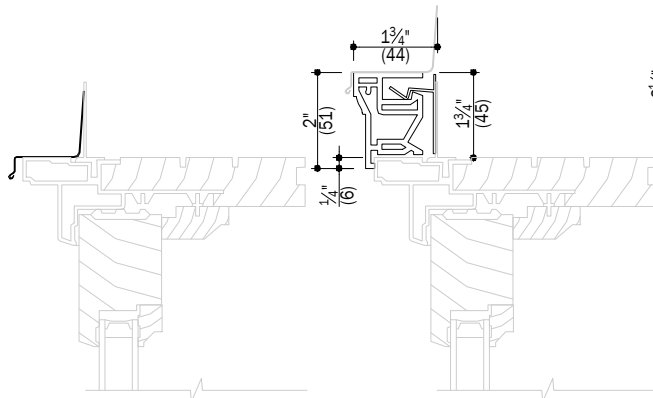
Date: 02/28/23

A-Series

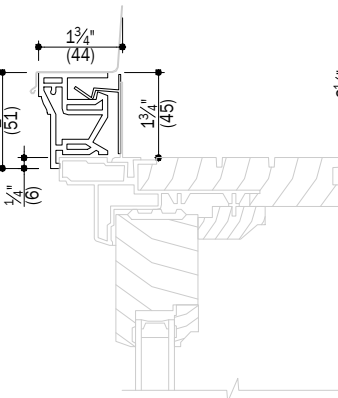
Patio Door - Sidelight & Transom
Traditional Panel



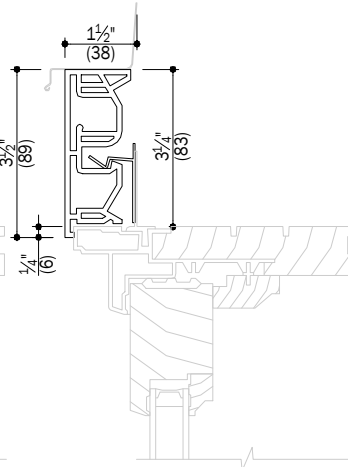
A
4 Extension Jamb



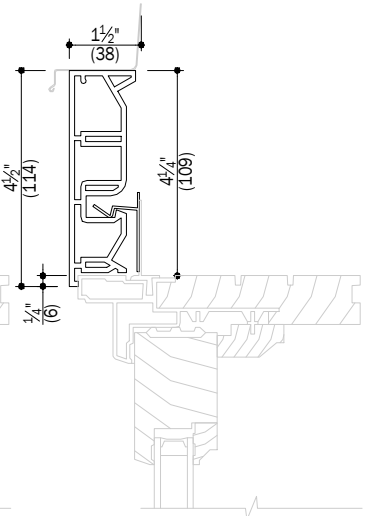
B
4 Drip Cap



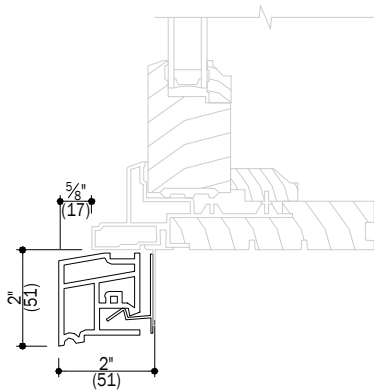
C
4 2" Brick Mould



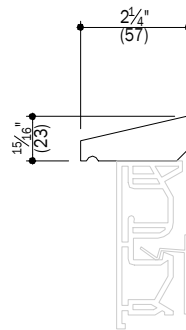
D
4 3 1/2" Flat Casing



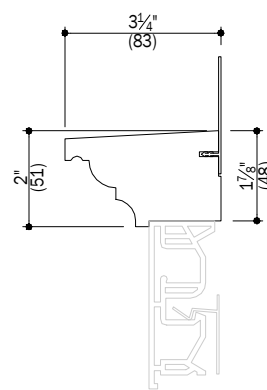
E
4 4 1/2" Flat Casing



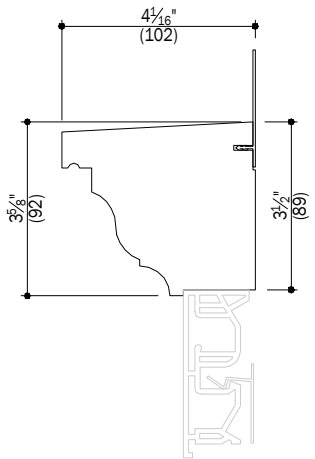
F
4 Sill Nose



G
4 Decorative Drip Cap



H
4 2" Cornice



J
4 3 5/8" Cornice

Scale: 3" (76) = 1' (305)

Notes:

Details have been optimized for use in architectural software and do not match manufacturing specifications.

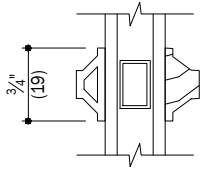
Dimensions in parentheses are in millimeters.

Andersen Windows, Inc. reserves the right to change drawing specifications without notice.

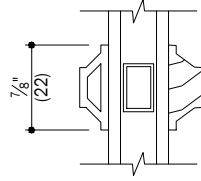
Date: 02/28/23

A-Series

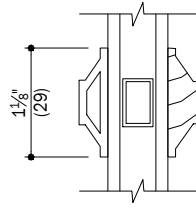
Patio Door - Sidelight & Transom
Traditional Panel



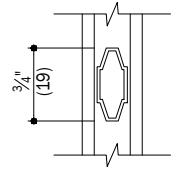
A
5 $\frac{3}{4}$ " Full Divided Light



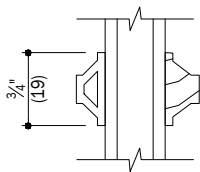
E
5 $\frac{7}{8}$ " Full Divided Light



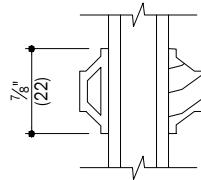
J
5 $1\frac{1}{8}$ " Full Divided Light



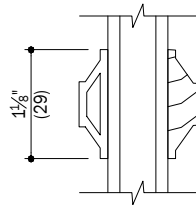
M
5 $\frac{3}{4}$ " Finelight



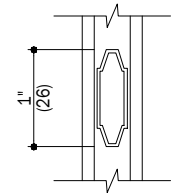
B
5 $\frac{3}{4}$ " Simulated Divided Light
Removable interior is available



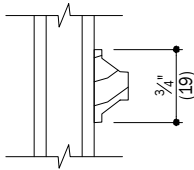
F
5 $\frac{7}{8}$ " Simulated Divided Light
Removable interior is available



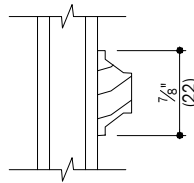
K
5 $1\frac{1}{8}$ " Simulated Divided Light
Removable interior is available



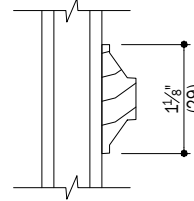
N
5 1" Finelight



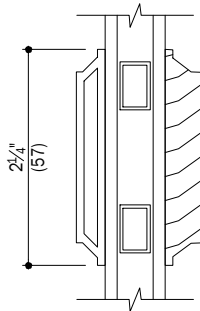
C
5 $\frac{3}{4}$ " Removable Interior Grille



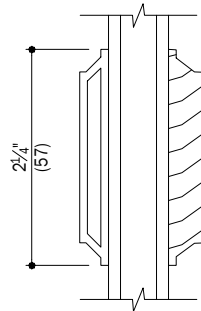
G
5 $\frac{7}{8}$ " Removable Interior Grille



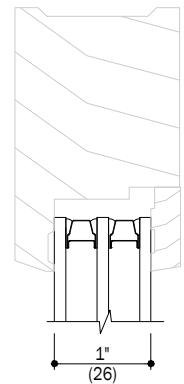
L
5 $1\frac{1}{8}$ " Removable Interior Grille



D
5 $2\frac{1}{4}$ " Full Divided Light
Simulated check rail



H
5 $2\frac{1}{4}$ " Simulated Divided Light
Simulated check rail



P
5 Triple Pane Glass

Scale: 6" (152) = 1' (305)

Notes:

Details have been optimized for use in architectural software and do not match manufacturing specifications.

Dimensions in parentheses are in millimeters.

Andersen Windows, Inc. reserves the right to change drawing specifications without notice.

Date: 02/28/23