



Casement

- Low maintenance exterior
- Easy to operate
- Slim frame and sash profile maximize the field of view
- Excellent for creating window combinations, as well as bays and bows



Awning

Contents

Casement Window

Basic Unit Details - Single Sash Units	1-2
Basic Unit Details - Double Sash Units.....	1-3
Basic Unit Details - Picture Unit	1-4
Options / Accessories	

Extension Jambs	1-4
Andersen® Grilles.....	1-5
Vent Limiter.....	1-7

Joining Details	1-8
Anchoring Methods	1-10
Suggested Product Applications	1-11

Awning Window

Basic Unit Details - Single Sash Unit.....	1-13
Basic Unit Details - Picture Unit	1-14

Options / Accessories

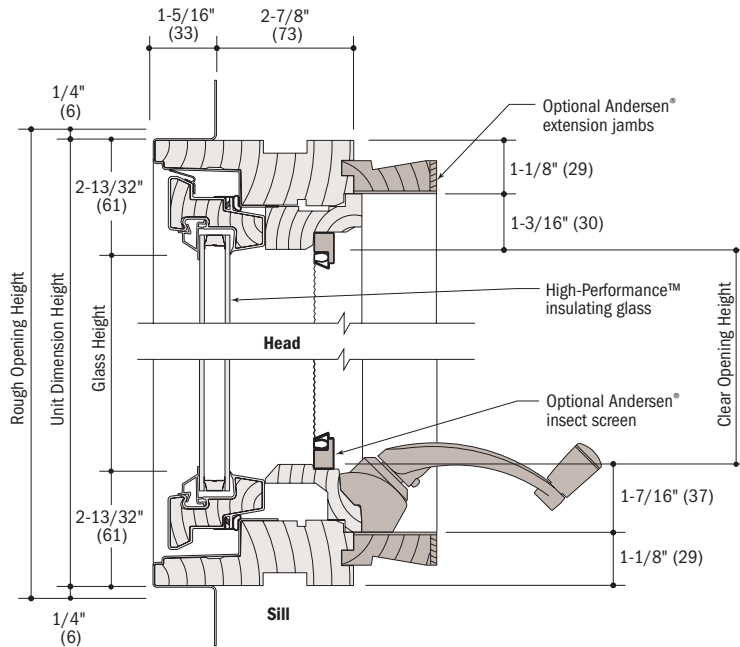
Extension Jambs	1-14
Andersen® Grilles.....	1-15
Extension Arm Pack.....	1-17
Vent Limiter.....	1-18
Operators.....	1-20

Joining Details	1-21
Anchoring Methods	1-23
Suggested Product Applications	1-24

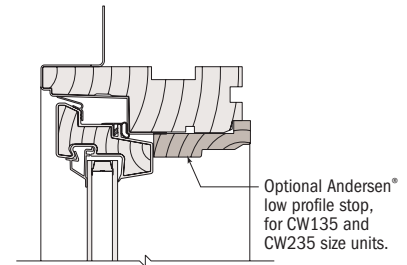
Basic Unit Details - Single Sash Units

Basic Unit

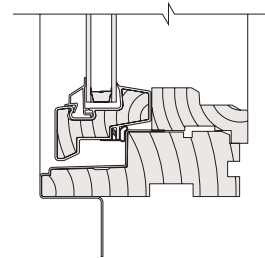
Scale 3" = 1'-0" (1:4)



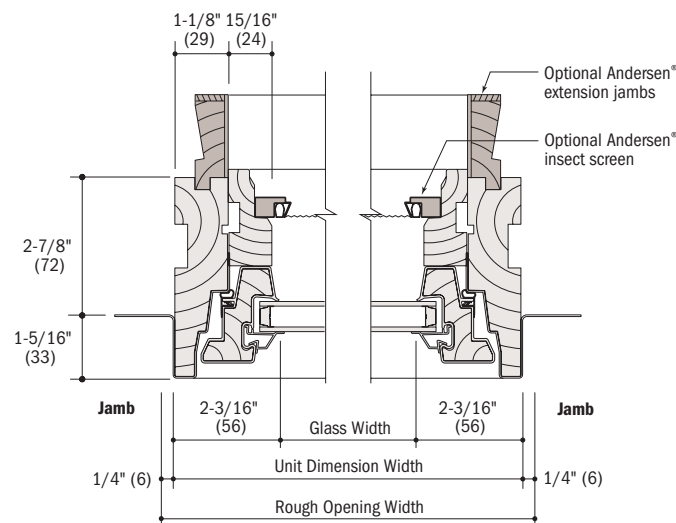
Vertical Section



**Vertical Section
Low Profile Stop**



**Vertical Section
Stationary Sill**

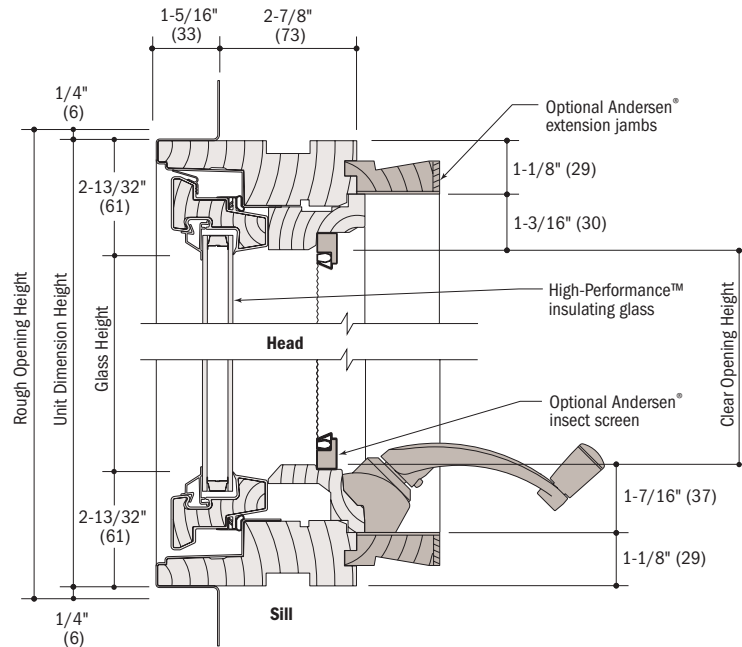


Horizontal Section

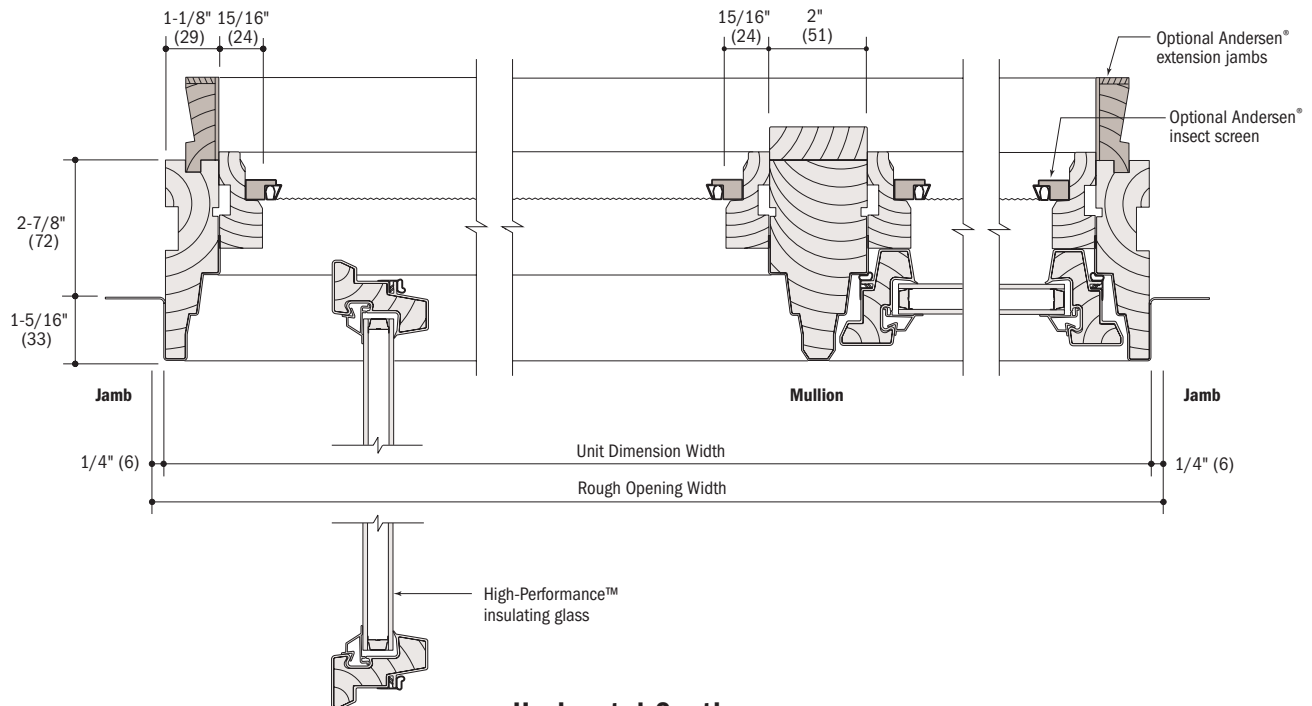
Basic Unit Details - Double Sash Units

Basic Unit

Scale 3" = 1'-0" (1:4)



Vertical Section

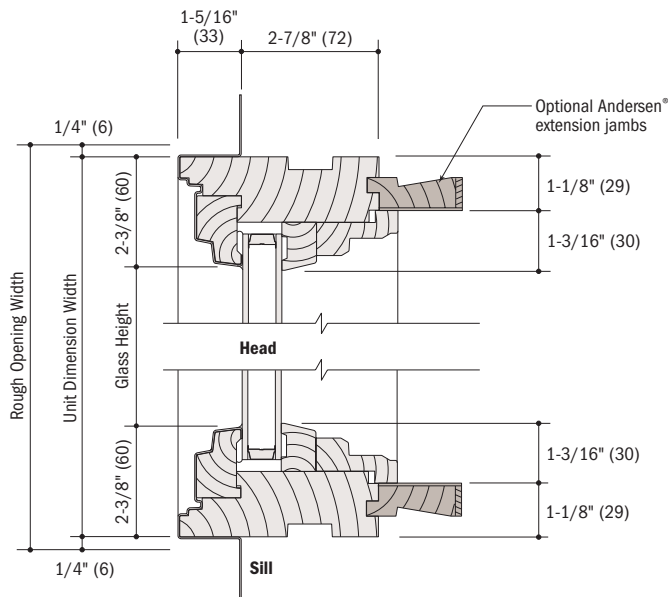


Horizontal Section

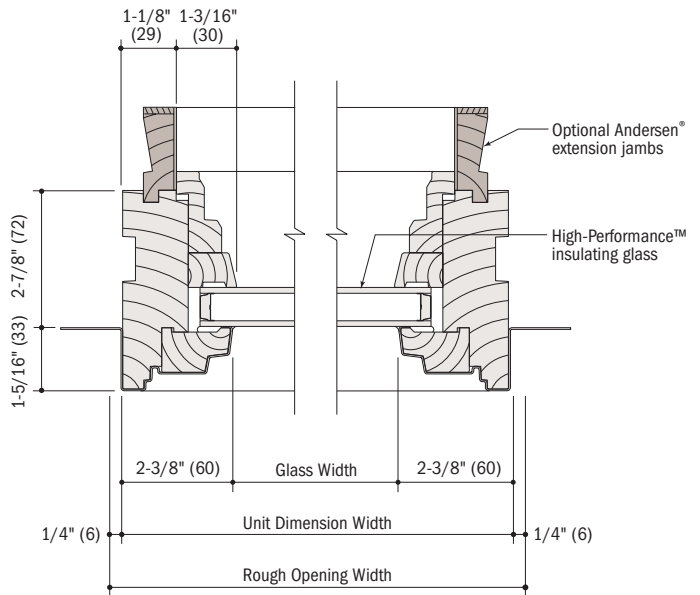
Basic Unit Details - Picture Unit (P)

Basic Unit

Scale 3" = 1'-0" (1:4)



Vertical Section

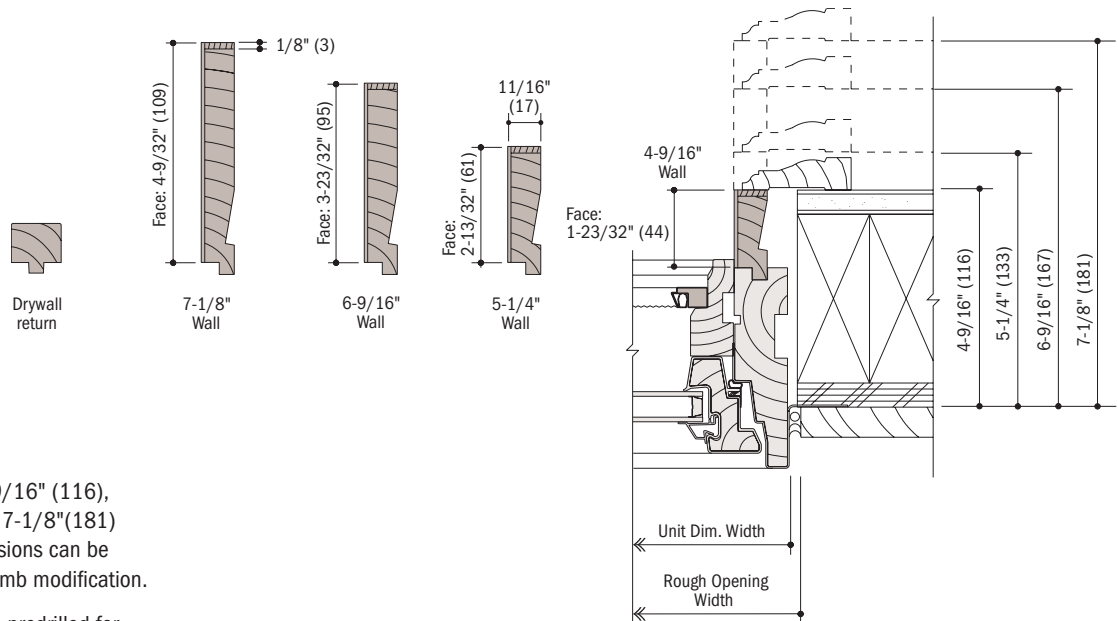


Horizontal Section

Options / Accessories

Extension Jambs

Scale 3" = 1'-0" (1:4)



Extension jambs available for 4-9/16" (116), 5-1/4" (133), 6-9/16" (167) or 7-1/8" (181) wall thickness. Other wall dimensions can be accommodated with extension jamb modification.

6-9/16" (167) extension jamb is predrilled for easy application.

Horizontal Section

Options / Accessories

Andersen® Divided Light Grilles

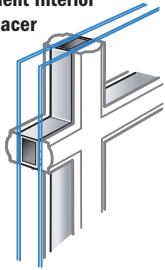
- Available now
- Available only with 3/8" glass through the Andersen Divided Light program
- ✓ Please check with Andersen for availability

		Andersen® 400 Series Windows																Andersen® 400 Series Doors				
		Casement & Awning	Casement Picture Window	Gliding Window	Woodwright® Double-Hung & Transom	Woodwright® Picture Window	Woodwright® Archtop & Unequal Leg Archtop	Woodwright® Springline™ Single-Hung	Tilt-Wash Double-Hung & Transom	Tilt-Wash Picture Window	Circle Top™ & Quarter Round	Arch	Springline™	Flexiframe®	Elliptical	Circle & Oval	Gothic	200 Series Narroline® Double-Hung & Transom	Frenchwood® Gliding	Frenchwood® Hinged Inswing	Frenchwood® Hinged Outswing	Frenchwood® Patio Door Sidelights & Transoms
Exterior Color	White	●	●	●	●	●	●	●	●	●	●	●	●	●	●	●	●	○	●	●	●	●
	Sandtone	●	●	●	●	●	●	●	●	●	●	●	●	●	●	●	●	○	●	●	●	●
	Terratone®	●	●	●	●	●	●	●	●	●	●	●	●	●	●	●	●	○	●	●	●	●
	Forest Green	●	●	●	●	●	●	●	●	●	●	●	●	●	●	●	●	○	●	●	●	●
Width	3/4"	●	●	●	●	●	●	●	●	●	●	●	●	●	●	●	●	○	●	●	●	●
	7/8"	●	●	●	●	●	●	●	●	●	●	●	●	●	●	●	●	○	●	●	●	●
	1-1/8"	●	●	●	●	●	●	●	●	●	●	●	●	●	●	●	●	○	●	●	●	●
	2-1/4"	●	●	●	●	●	●	●	●	●	●	✓	●	●	✓	✓	●	○	●	●	●	●
Type	With Spacer	●	●	●	●	●	●	●	●	●	●	●	●	●	✓	✓	●	○	●	●	●	●
	Without Spacer	●	●	●	●	●	●	●	●	●	●	●	●	●	●	●	●	○	●	●	●	●
Interior	Maple	●	●	●	●	●	●	●	●	●	●	●	●	●	●	●	●	○	●	●	●	●
	Oak	●	●	●	●	●	●	●	●	●	●	●	●	●	●	●	●	○	●	●	●	●
	Prefinished	●	●	●	●	●	●	●	●	●	●	●	●	●	●	●	●	○	●	●	●	●
	Pine	●	●	●	●	●	●	●	●	●	●	●	●	●	●	●	●	○	●	●	●	●
Patterns	Colonial	●	●	●	●	●	●	●	●	●	●	●	●	✓	●	●	●	○	●	●	●	●
	Modified Colonial	●	●	●	●	●	●	●	●	●	●	●	●	●	●	●	●	○	●	●	●	●
	Modified Col W/Check Rail	●	●	●	●	●	●	●	●	●	●	●	●	●	●	●	●	○	●	●	●	●
	Prairie A	●	●	●	●	●	●	●	●	●	●	✓	●	●	●	●	●	○	●	●	●	●
	Short Fractional	●	●	●	●	●	●	●	●	●	●	●	●	●	●	●	●	○	●	●	●	●
	Short Fractional W/Check Rail	●	●	●	●	●	●	●	●	●	●	●	●	●	●	●	●	○	●	●	●	●
	Tall Fractional	●	●	●	●	●	●	●	●	●	●	●	●	●	●	●	●	○	●	●	●	●
	Tall Fractional W/Check Rail	●	●	●	●	●	●	●	●	●	●	●	●	●	●	●	●	○	●	●	●	●
	Victorian	●	●	●	●	●	●	●	●	●	●	●	●	●	●	●	●	○	●	●	●	●
	Renaissance	●	●	●	●	●	●	●	●	●	●	●	●	●	●	●	●	○	●	●	●	●
	Sunburst	●	●	●	●	●	●	●	●	●	●	●	●	●	●	●	●	○	●	●	●	●
	Specified Equal Light	●	●	●	●	●	●	●	●	●	●	●	●	●	●	●	●	○	●	●	●	●
	Custom	●	●	●	●	●	●	●	●	●	●	●	●	●	●	●	●	○	●	●	●	✓
	Glass	HP/HP Tempered	●	●	●	●	●	●	●	●	●	●	●	●	●	●	●	●	○	●	●	●
HP Sun/HP Sun Temp		●	●	●	●	●	●	●	●	●	●	●	●	●	●	●	●	○	●	●	●	●
3/8" Low-E/Temp		●	●	●	●	●	●	●	●	●	●	●	●	●	●	●	●	○	●	●	●	●
Single-Pane Impact		●	●	●	●	●	●	●	●	●	●	●	●	●	●	●	●	○	●	●	●	●

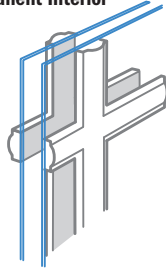
Options / Accessories

400 Series Grille Options

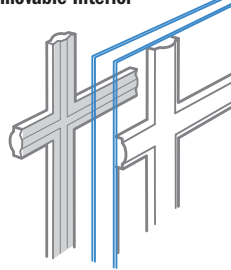
**Andersen® Divided Light Grille
Permanent Exterior
Permanent Interior
with Spacer**



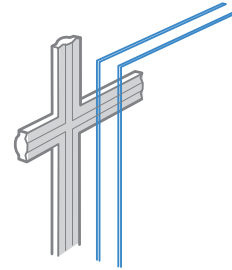
**Andersen® Divided Light Grille
Permanent Exterior
Permanent Interior**



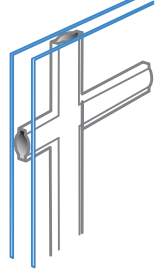
**Andersen® Divided Light Grille
Permanent Exterior
Removable Interior**



**Removable
Interior**

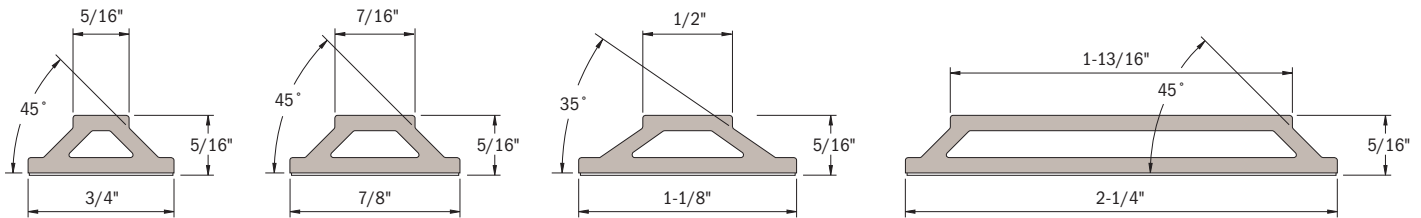


**Andersen® Finelight™
Grilles-Between-the-Glas**



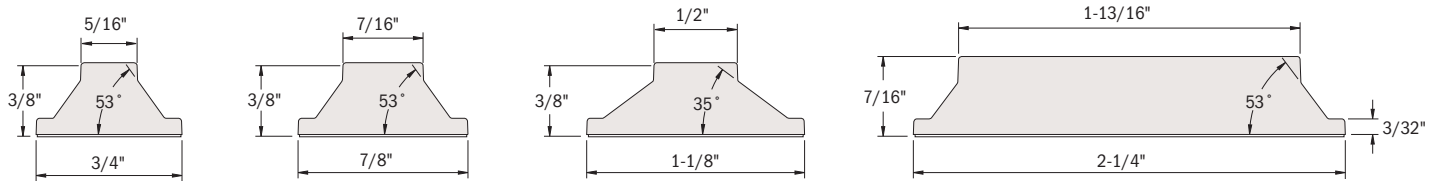
Grille Profiles • Scale = Full • Dimensions include thickness of tape.

Permanent Exterior Fibrex® Material Grille Profiles (chamfer profile). Also used for pre-finished interior, except 400 Series Woodwright® double-hung windows.

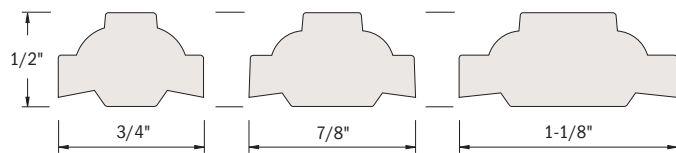


Permanent Interior Wood Grille Profiles (chamfer profile).

The Fibrex® material exterior grille is used when a permanent prefinished grille is specified, except with 400 Series Woodwright® double-hung windows.

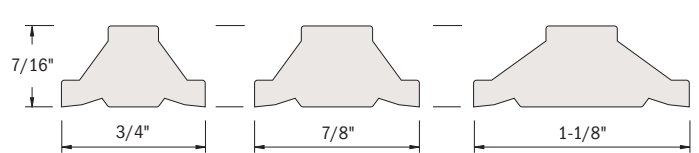


Removable Interior Wood Grille Profile (roman ogee profile).

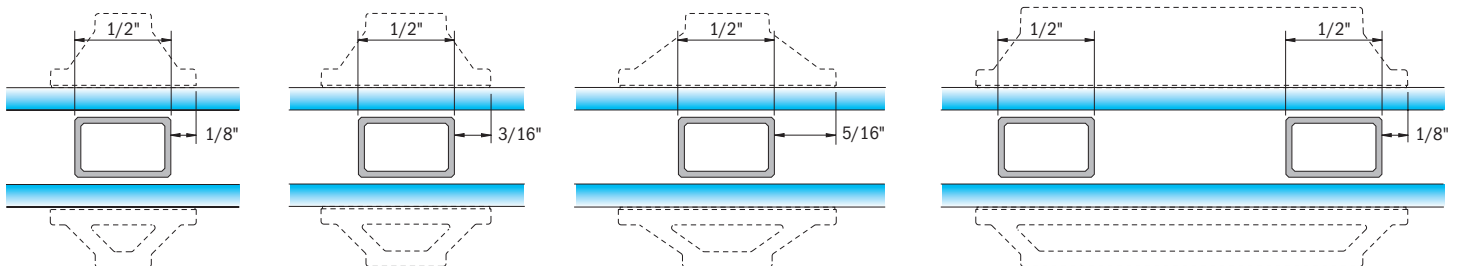


Removable Interior Wood Grille Profile (Chamfer profile).

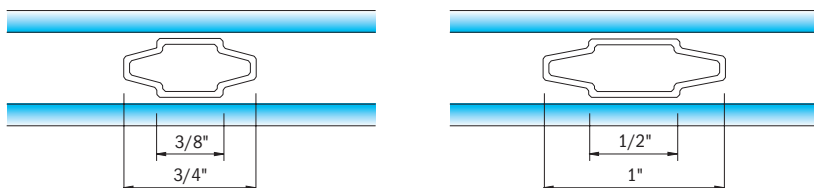
400 Series Woodwright® double-hung windows only.



Permanent Full Divided Light Grille spacer location.



Andersen® Finelight™ Grilles-Between-the-Glass.



Options / Accessories

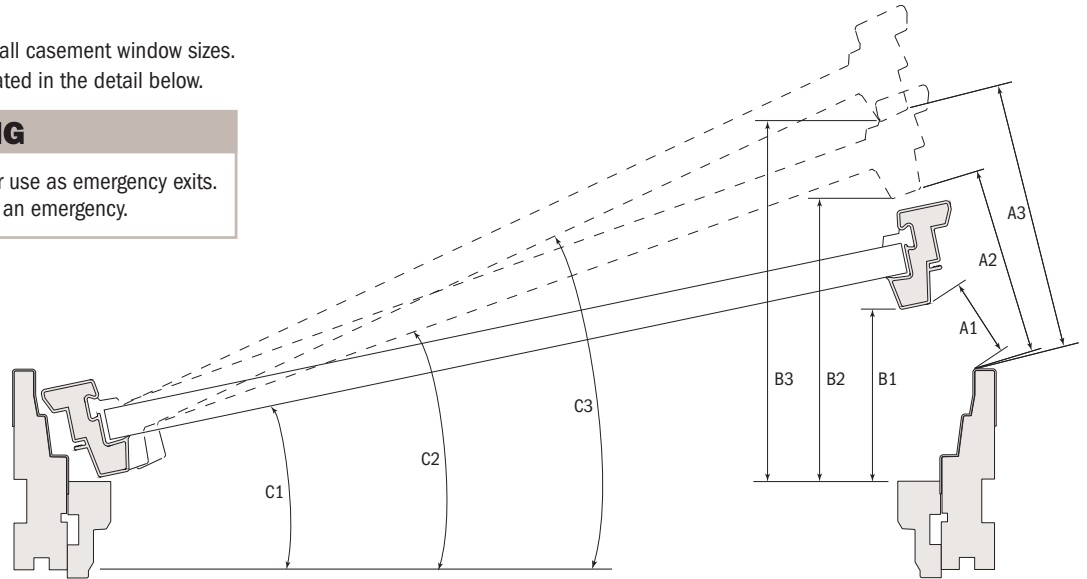
Casement Vent Limiter

Scale: None

Split arm vent limiters are available for all casement window sizes. They have three position settings, indicated in the detail below.

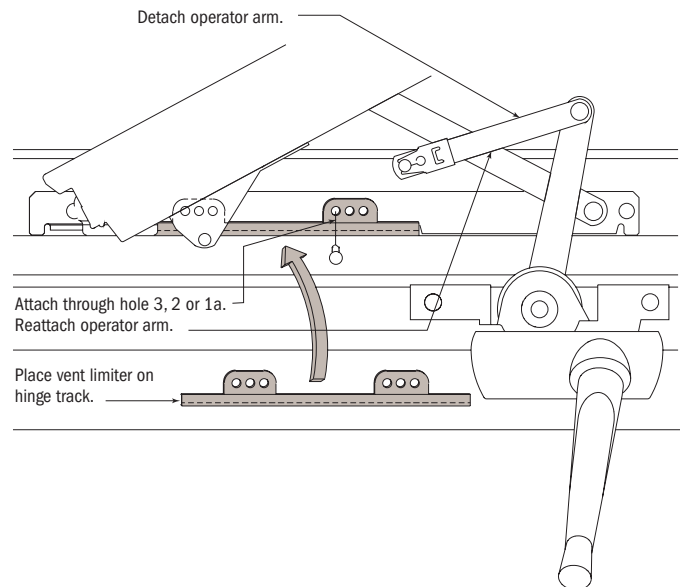
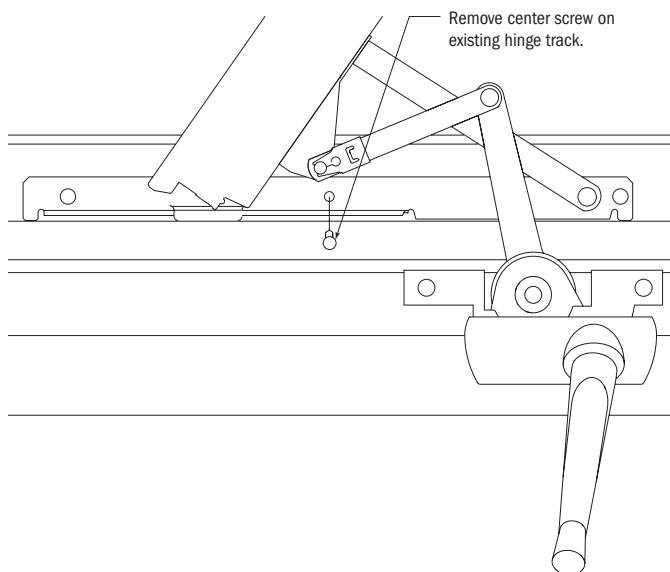
⚠ WARNING

Do not install on windows intended for use as emergency exits. Device will hinder escape or rescue in an emergency.



	Position A			Position B			Position C		
Unit Size	A1	A2	A3	B1	B2	B3	C1	C2	C3
CR widths	1-7/16"	3-3/8"	4-7/8"	3-5/16"	5-5/16"	6-3/4"	13.56°	22.07°	28.27°
CN widths	2-3/16"	4-11/16"	6-9/16"	4-1/8"	6-5/8"	8-3/8"	13.56°	22.07°	28.27°
C widths	3"	6-1/8"	8-3/8"	4-15/16"	8"	10-1/8"	13.56°	22.07°	28.27°
CW widths	4"	7-3/4"	10-7/16"	5-15/16"	9-9/16"	12-1/8"	13.56°	22.07°	28.27°
CX widths	4-15/16"	9-1/8"	12-1/8"	6-7/8"	10-15/16"	13-3/4"	13.56°	22.07°	28.27°
CXW widths	5-3/4"	10-5/8"	14-1/8"	7-3/4"	12-7/16"	15-11/16"	13.56°	22.07°	28.27°

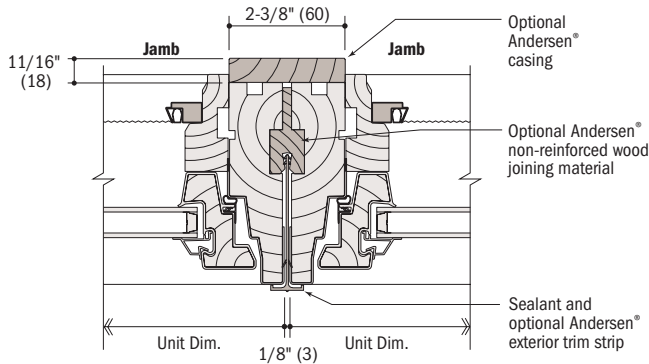
See complete instruction guide at www.andersenwindows.com



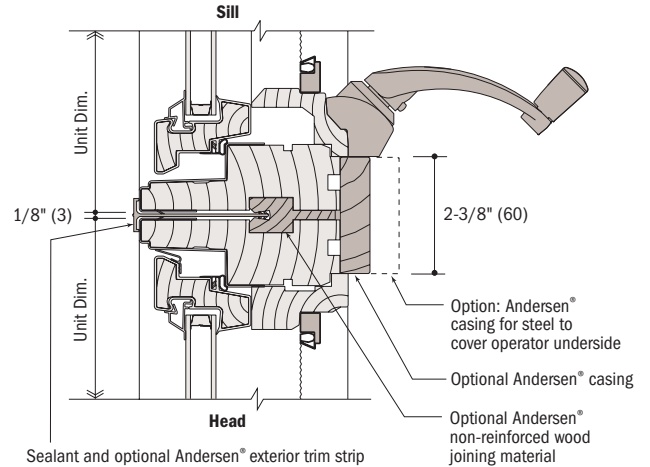
Joining Details—Andersen® Narrow Joining Materials

Andersen® Non-Reinforced Joining

Scale 3" = 1'-0" (1:4)



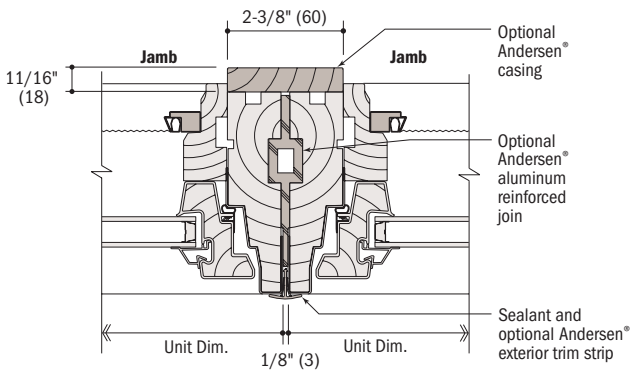
Horizontal Section



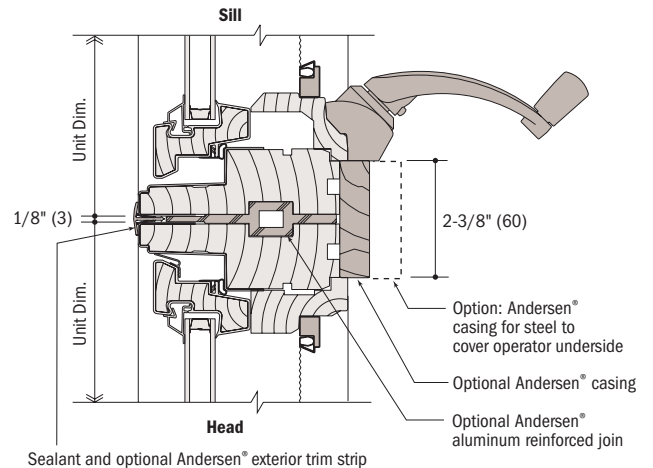
Vertical Section

Andersen® Aluminum Reinforced Joining

Scale 3" = 1'-0" (1:4)



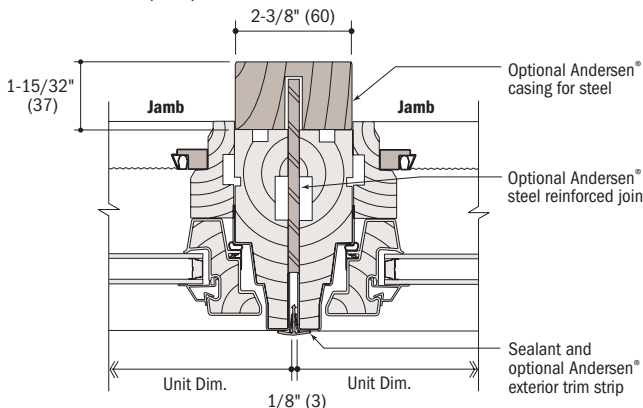
Horizontal Section



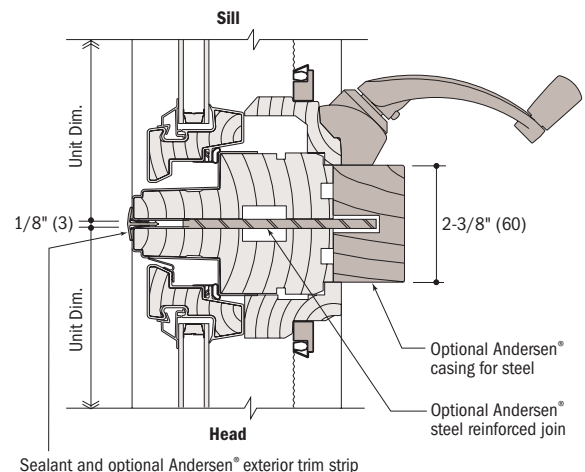
Vertical Section

Andersen® Steel Reinforced Joining

Scale 3" = 1'-0" (1:4)



Horizontal Section

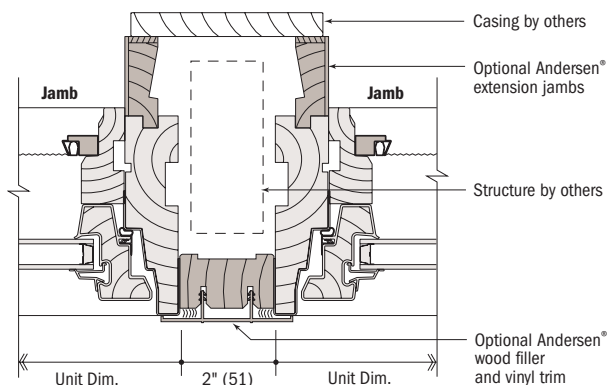


Vertical Section

Joining Details

2" Support Mullion

Scale 3" = 1'-0" (1:4)



Horizontal Section

Joining Compatibility

Many Andersen® units are designed to be joined with other Andersen units in a variety of non-reinforced and reinforced combinations. Other combination types and joining methods can be viewed in the Andersen® Product Guide, in Andersen Window Studio® software, and by visiting andersenwindows.com. Combination designs should always be checked for design pressure performance requirements to ensure the appropriate joining method is specified.

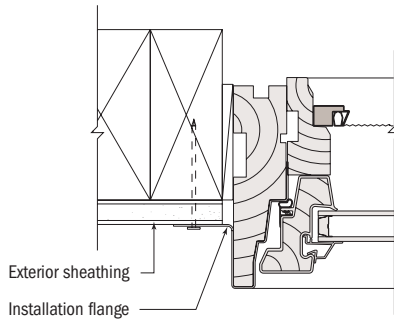
NOTE: Reinforced component details are typical examples for large window combinations that require additional support for windload (lateral load) purposes. Determination of the reinforcing member(s) required for a specific job and appropriate selection of Andersen® products which conform to all applicable laws, ordinances, building codes, and safety requirements is the sole responsibility of the architect, building owner and/or contractor. Check with your local building code officials for specific requirements and with your local Andersen supplier for general information. Andersen strongly recommends consultation with an architect or structural engineer to determine appropriate support and reinforcement. Andersen is not responsible for conditions in, or performance of, adjacent wall or roof construction beyond the perimeter of the Andersen unit, nor the fastening system used.

Anchoring Methods

Installation Flange

Scale 3" = 1'-0" (1:4)

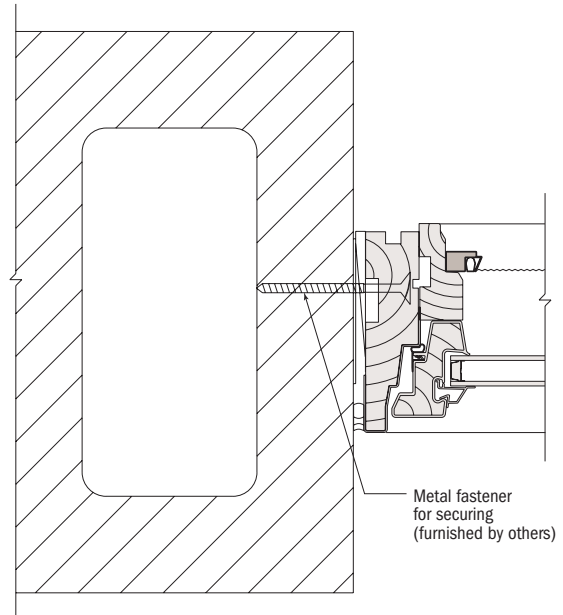
Casement window is secured in the opening by using fasteners through the installation flange.



Threaded Masonry Fastener / Expansion Sleeve

Scale 3" = 1'-0" (1:4)

To secure a casement window unit in an opening, remove the sash stops and pre-drill through the side jambs for fastener installation.



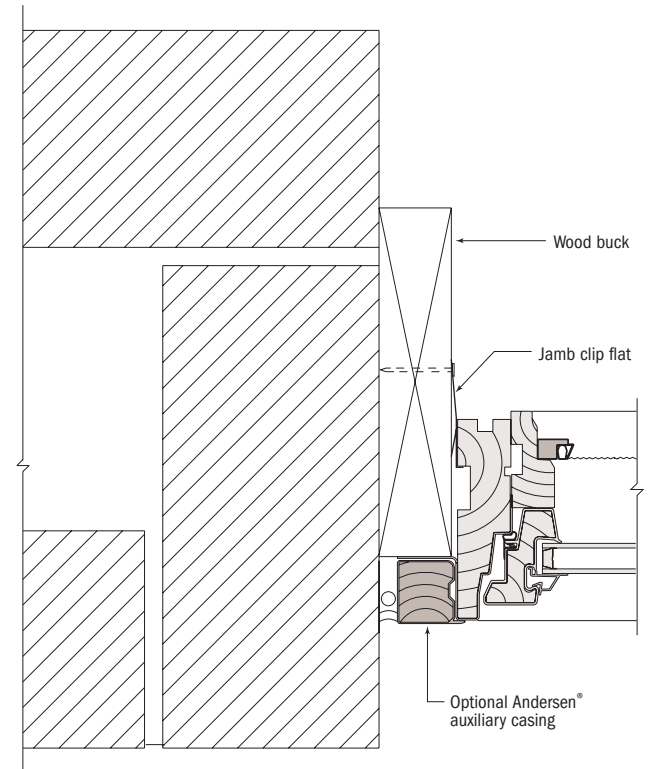
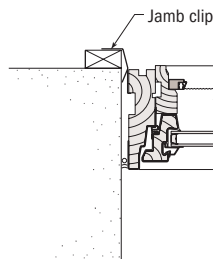
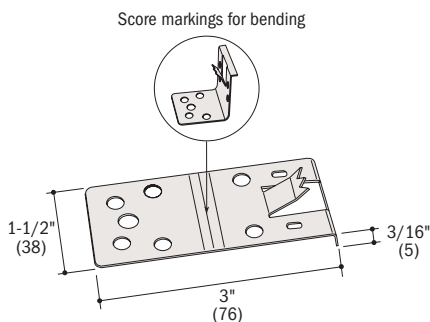
Jamb Clip

Scale 3" = 1'-0" (1:4)

Casement window unit secured in opening by others using Andersen® 302 stainless steel sheet metal jamb clips and stainless steel screws. Bend the jamb clips to secure unit fit in opening. Installation flange can be cut as required to accommodate the jamb clips.

APPLICATION:

- First secure jamb clip to back side of window unit jamb(s)
- Apply 12" apart on center starting 6" from corners of head jamb, sill and side jambs
- Jamb clip lateral design load capacity: maximum 200 lb.

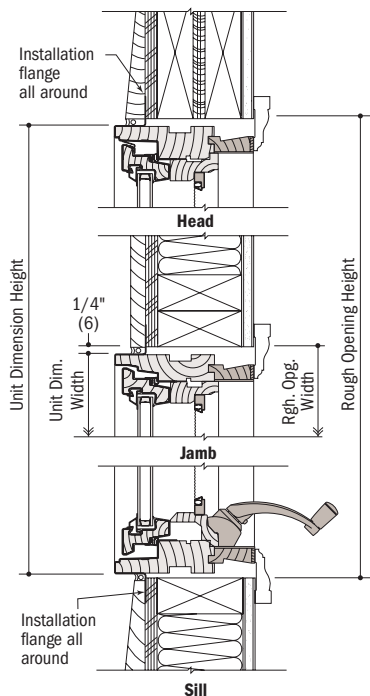


CAUTION

Unit will not operate properly if frame parts are stressed. Make sure that the unit frame parts do not become bowed when using anchoring methods.

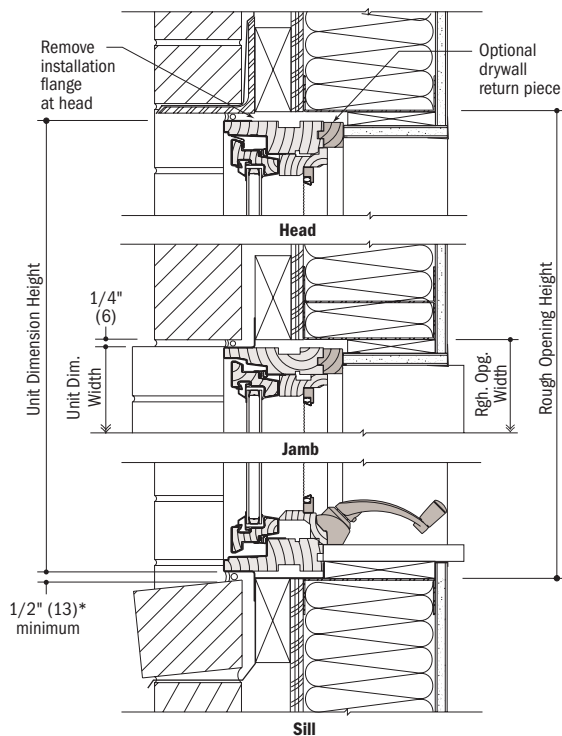
Suggested Product Applications

Wall Types Scale 1-1/2" = 1'-0" (1:8)



Vertical Section

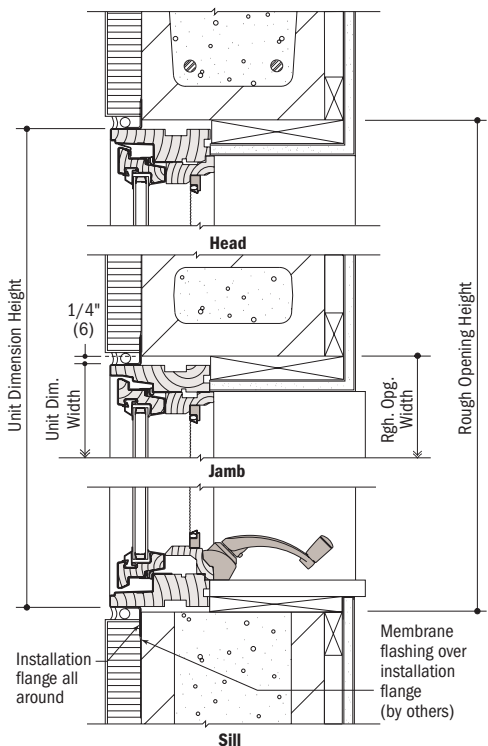
Wood Siding / 2 x 4 Wood Stud Framing



*1/2\" (13) minimum to accommodate differential shrinkage/expansion when brick is used with wood framing.

Vertical Section

Brick Veneer / 2 x 6\" Metal Stud Framing



Vertical Section

E.I.F.S. / Concrete Masonry Unit (CMU)

Importance of Proper Installation

Proper installation and maintenance of Andersen® products are essential if optimum performance is to be fully attained. Written installation instructions which provide guidelines for proper installation are available for Andersen products from your local Andersen supplier or by writing to: Andersen Windows, Inc., Box 12, Bayport, MN 55003 or by visiting our website at www.andersenwindows.com. Remember that every installation is different. Andersen strongly recommends consultation with an Andersen product representative and with an experienced contractor, architect, or structural engineer prior to the installation of any Andersen product. Installation of Andersen products, including method of attachment, fastener selection, and code compliance is the sole responsibility of the architect, building owner, contractor, and/or consumer.

Construction by Others

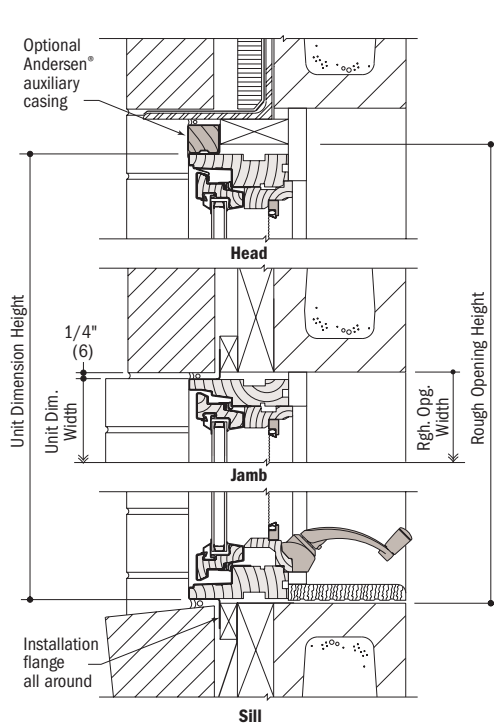
Andersen Corporation is not responsible for the design of, conditions in, or performance of, adjacent wall or roof construction beyond the perimeter of the Andersen units. Proper integration of the Andersen units with the weather-repellent system of the building is the responsibility of others.

NOTE: Where E.I.F.S. wall finish is adjacent to window units, contact E.I.F.S. manufacturer for installation instructions, including the use of appropriate flashing, the proper use of sealant and backer rod, and the proper width of sealant joint around the perimeter of the window.

NOTE: Leave adequate clearance between sill and masonry for caulking and dimensional change of framework. Installation flange may be removed where construction sequence/ detailing requires no flange.

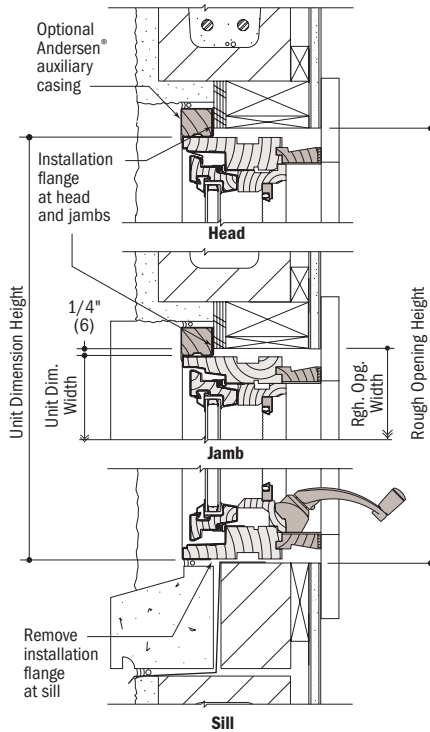
Suggested Product Applications

Wall Types Scale 1-1/2" = 1'-0" (1:8)



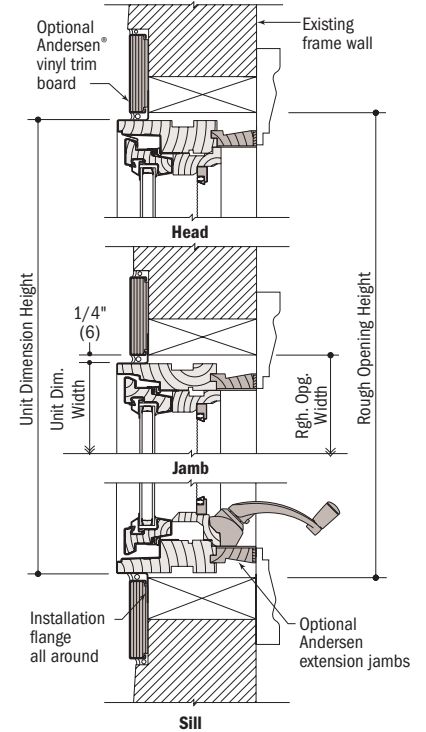
Vertical Section

Brick / Concrete Masonry Unit (CMU)



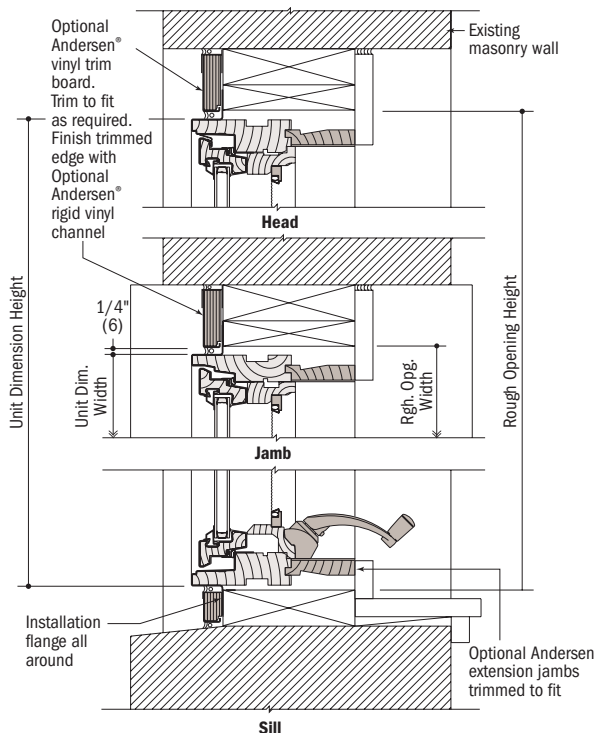
Vertical Section

Stucco / Concrete Masonry Unit (CMU) Inset Window



Vertical Section

Existing Stud Wall



Vertical Section

Existing Masonry Wall

Importance of Proper Installation

Proper installation and maintenance of Andersen® products are essential if optimum performance is to be fully attained. Written installation instructions which provide guidelines for proper installation are available for Andersen products from your local Andersen supplier or by writing to: Andersen Windows, Inc., Box 12, Bayport, MN 55003 or by visiting our website at www.andersenwindows.com. Remember that every installation is different. Andersen strongly recommends consultation with an Andersen product representative and with an experienced contractor, architect, or structural engineer prior to the installation of any Andersen product. Installation of Andersen products, including method of attachment, fastener selection, and code compliance is the sole responsibility of the architect, building owner, contractor, and/or consumer.

Construction by Others

Andersen Corporation is not responsible for the design of, conditions in, or performance of, adjacent wall or roof construction beyond the perimeter of the Andersen units. Proper integration of the Andersen units with the weather-repellent system of the building is the responsibility of others.

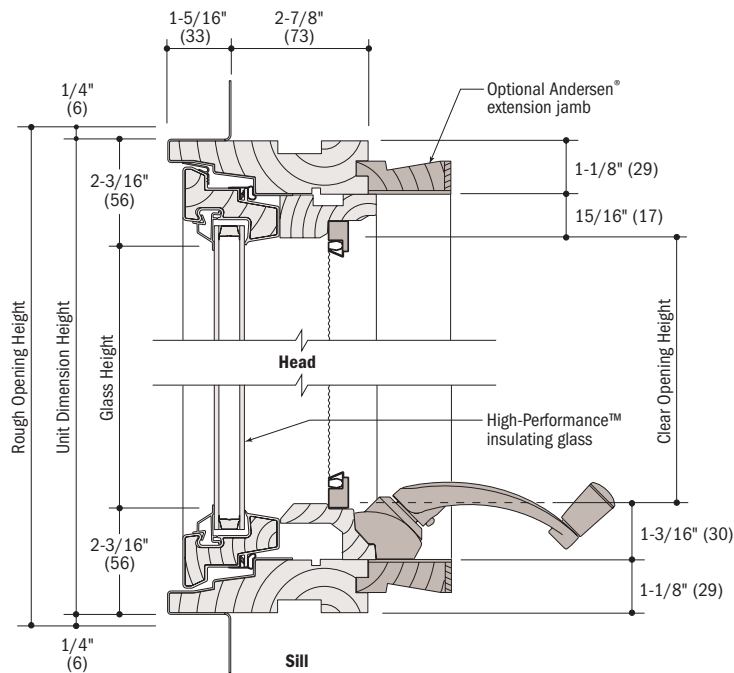
NOTE: Where E.I.F.S. wall finish is adjacent to window units, contact E.I.F.S. manufacturer for installation instructions, including the use of appropriate flashing, the proper use of sealant and backer rod, and the proper width of sealant joint around the perimeter of the window.

NOTE: Leave adequate clearance between sill and masonry for caulking and dimensional change of framework. Installation flange may be removed where construction sequence/ detailing requires no flange.

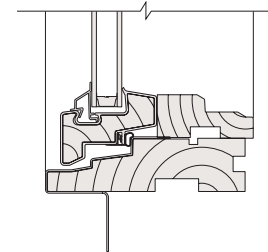
Basic Unit Details - Single Sash Unit

Basic Unit

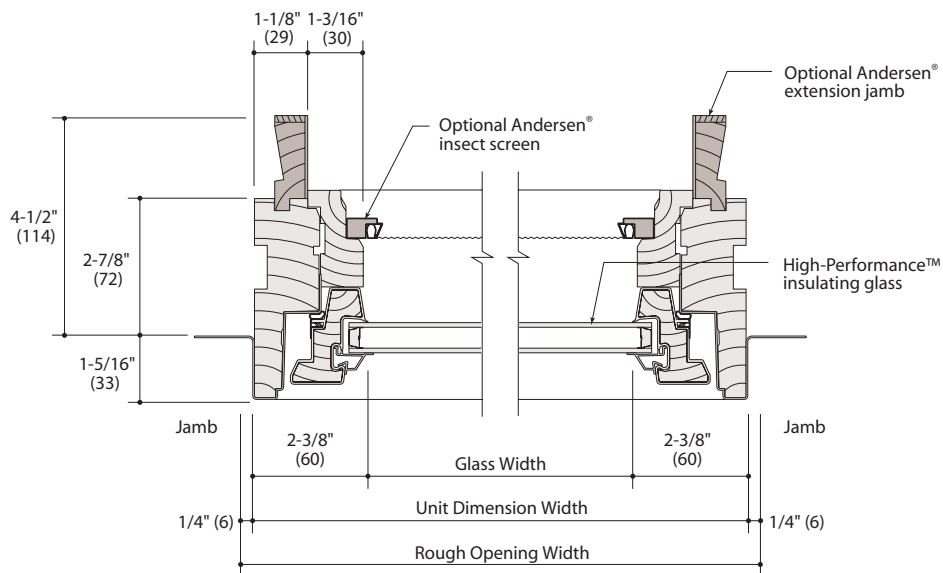
Scale 3" = 1'-0" (1:4)



Vertical Section



**Vertical Section
Stationary Sill**

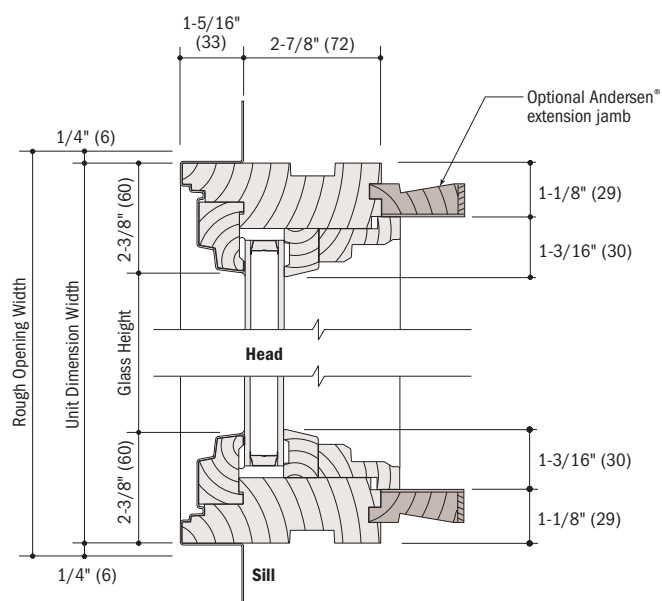


Horizontal Section

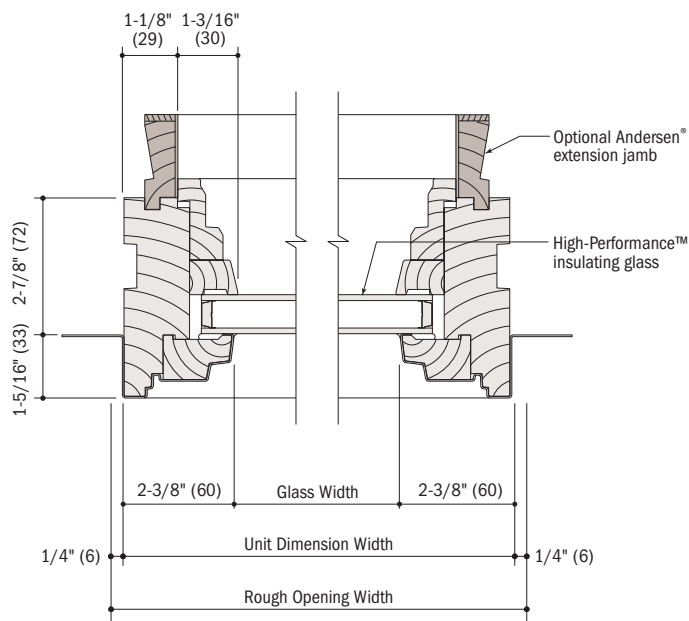
Basic Unit Details - Picture Unit (P)

Basic Unit

Scale 3" = 1'-0" (1:4)



Vertical Section

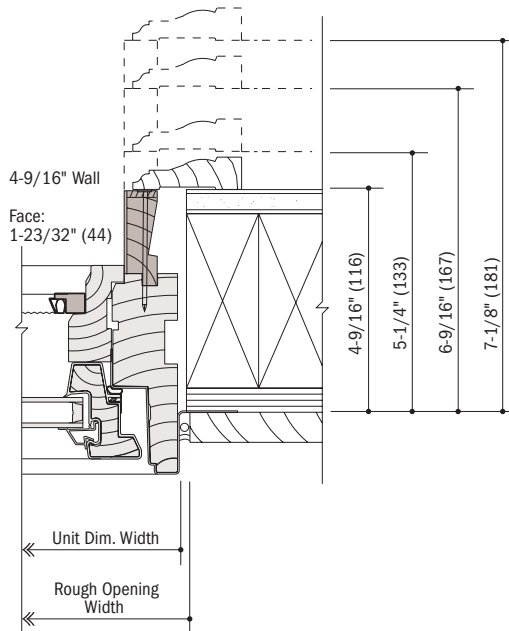
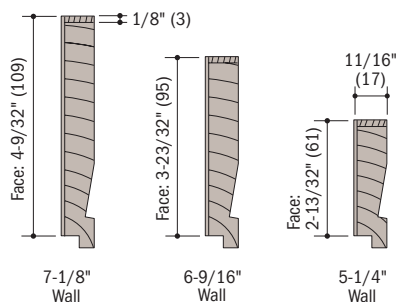


Horizontal Section

Options / Accessories

Extension Jamb

Scale 3" = 1'-0" (1:4)






Horizontal Section

Extension jambs available for 4-9/16" (116), 5-1/4" (133), 6-9/16" (167) or 7-1/8" (181) wall thickness. Other wall dimensions can be accommodated with extension jamb modification.

6-9/16" (167) extension jambs are predrilled for easy application.

Options / Accessories

Andersen® Divided Light Grilles

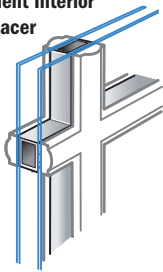
-  Available now
-  Available only with 3/8" glass through the Andersen Divided Light program
-  Please check with Andersen for availability

		Andersen® 400 Series Windows															200 Series Narroline® Double-Hung & Transom	Andersen® 400 Series Doors			
		Casement & Awning	Casement Picture Window	Gliding Window	Woodwright® Double-Hung & Transom	Woodwright® Picture Window	Woodwright® Archtop & Unequal Leg Archtop	Woodwright® Springline™ Single-Hung	Tilt-Wash Double-Hung & Transom	Tilt-Wash Picture Window	Circle Top™ & Quarter Round	Arch	Springline™	Flexiframe®	Elliptical	Circle & Oval	Gothic	Frenchwood® Gliding	Frenchwood® Hinged Inswing	Frenchwood® Hinged Outswing	Frenchwood® Patio Door Sidelights & Transoms
Exterior Color	White	●	●	●	●	●	●	●	●	●	●	●	●	●	●	●	●	●	●	●	●
	Sandtone	●	●	●	●	●	●	●	●	●	●	●	●	●	●	●	●	●	●	●	●
	Terratone®	●	●	●	●	●	●	●	●	●	●	●	●	●	●	●	●	●	●	●	●
	Forest Green	●	●	●	●	●	●	●	●	●	●	●	●	●	●	●	●	●	●	●	●
Width	3/4"	●	●	●	●	●	●	●	●	●	●	●	●	●	●	●	●	●	●	●	●
	7/8"	●	●	●	●	●	●	●	●	●	●	●	●	●	●	●	●	●	●	●	●
	1-1/8"	●	●	●	●	●	●	●	●	●	●	●	●	●	●	●	●	●	●	●	●
	2-1/4"	●	●	●	●	●	●	●	●	●	●	✓	●	●	✓	✓	●	●	●	●	●
Type	With Spacer	●	●	●	●	●	●	●	●	●	●	●	●	●	✓	✓	●	●	●	●	●
	Without Spacer	●	●	●	●	●	●	●	●	●	●	●	●	●	●	●	●	●	●	●	●
Interior	Maple	●	●	●	●	●	●	●	●	●	●	●	●	●	●	●	●	●	●	●	●
	Oak	●	●	●	●	●	●	●	●	●	●	●	●	●	●	●	●	●	●	●	●
	Prefinished	●	●	●	●	●	●	●	●	●	●	●	●	●	●	●	●	●	●	●	●
	Pine	●	●	●	●	●	●	●	●	●	●	●	●	●	●	●	●	●	●	●	●
Patterns	Colonial	●	●	●	●	●	●	●	●	●	●	●	●	✓	●	●	●	●	●	●	●
	Modified Colonial	●	●	●	●	●	●	●	●	●	●	●	●	●	●	●	●	●	●	●	●
	Modified Col W/Check Rail	●	●	●	●	●	●	●	●	●	●	●	●	●	●	●	●	●	●	●	●
	Prairie A	●	●	●	●	●	●	●	●	●	●	✓	●	●	●	●	●	●	●	●	●
	Short Fractional	●	●	●	●	●	●	●	●	●	●	●	●	●	●	●	●	●	●	●	●
	Short Fractional W/Check Rail	●	●	●	●	●	●	●	●	●	●	●	●	●	●	●	●	●	●	●	●
	Tall Fractional	●	●	●	●	●	●	●	●	●	●	●	●	●	●	●	●	●	●	●	●
	Tall Fractional W/Check Rail	●	●	●	●	●	●	●	●	●	●	●	●	●	●	●	●	●	●	●	●
	Victorian	●	●	●	●	●	●	●	●	●	●	●	●	●	●	●	●	●	●	●	●
	Renaissance	●	●	●	●	●	●	●	●	●	●	●	●	●	●	●	●	●	●	●	●
	Sunburst	●	●	●	●	●	●	●	●	●	●	●	●	●	●	●	●	●	●	●	●
	Specified Equal Light	●	●	●	●	●	●	●	●	●	●	●	●	●	●	●	●	●	●	●	●
	Custom	●	●	●	●	●	●	●	●	●	●	●	●	●	●	●	●	●	●	●	✓
	Glass	HP/HP Tempered	●	●	●	●	●	●	●	●	●	●	●	●	●	●	●	●	●	●	●
HP Sun/HP Sun Temp		●	●	●	●	●	●	●	●	●	●	●	●	●	●	●	●	●	●	●	●
3/8" Low-E/Temp		●	●	●	●	●	●	●	●	●	●	●	●	●	●	●	●	●	●	●	●
Single-Pane Impact		●	●	●	●	●	●	●	●	●	●	●	●	●	●	●	●	●	●	●	●

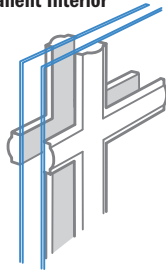
Options / Accessories

400 Series Grille Options

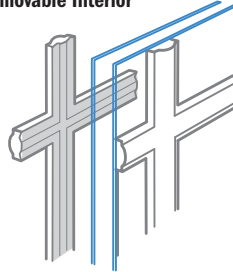
Andersen® Divided Light Grille
Permanent Exterior
Permanent Interior
with Spacer



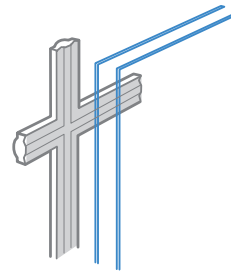
Andersen® Divided Light Grille
Permanent Exterior
Permanent Interior



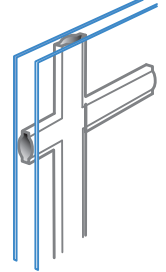
Andersen® Divided Light Grille
Permanent Exterior
Removable Interior



**Removable
Interior**

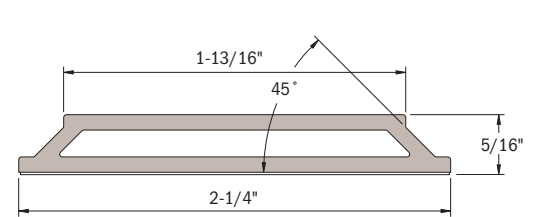
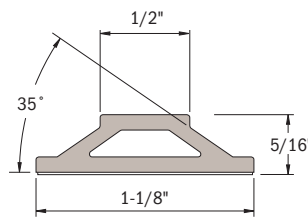
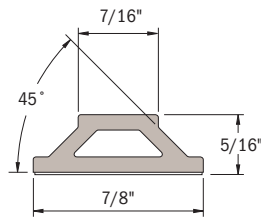
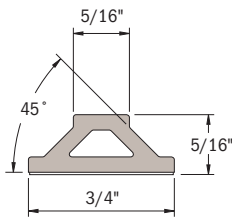


Andersen® Finelight™
Grilles-Between-the-Glass



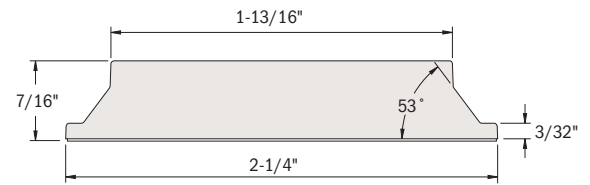
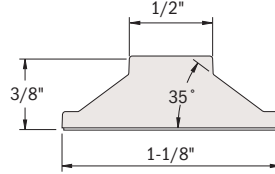
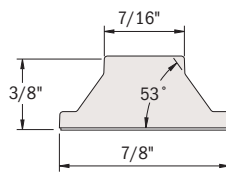
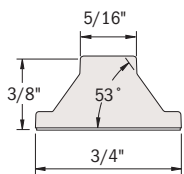
Grille Profiles • Scale = Full • Dimensions include thickness of tape.

Permanent Exterior Fibrex® Material Grille Profiles (chamfer profile). Also used for pre-finished interior, except 400 Series Woodwright® double-hung windows.

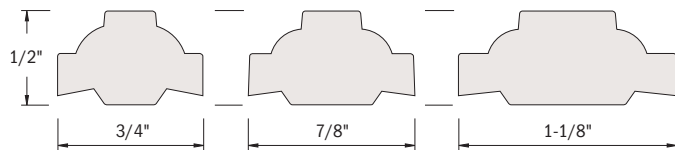


Permanent Interior Wood Grille Profiles (chamfer profile).

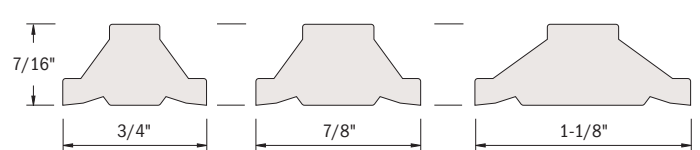
The Fibrex® material exterior grille is used when a permanent prefinished grille is specified, except with 400 Series Woodwright® double-hung windows.



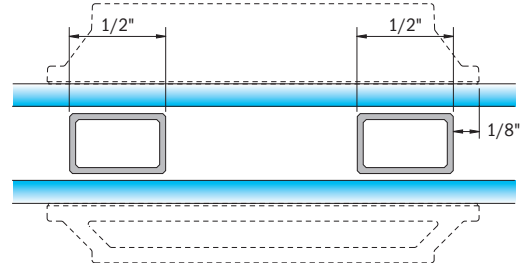
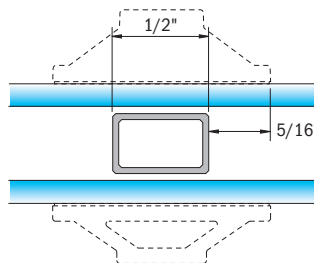
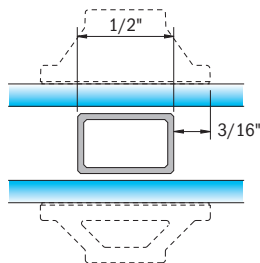
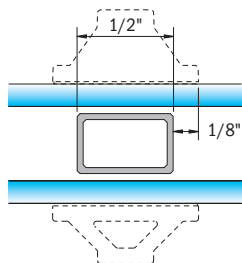
Removable Interior Wood Grille Profile (roman ogee profile).



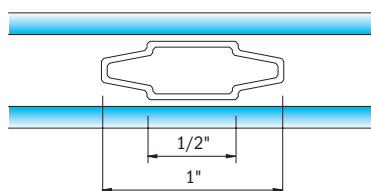
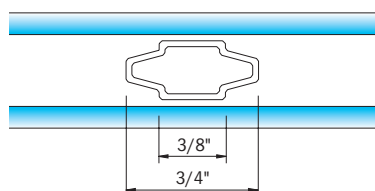
Removable Interior Wood Grille Profile (Chamfer profile).
400 Series Woodwright® double-hung windows only.



Permanent Full Divided Light Grille spacer location.



Andersen® Finelight™ Grilles-Between-the-Glass.



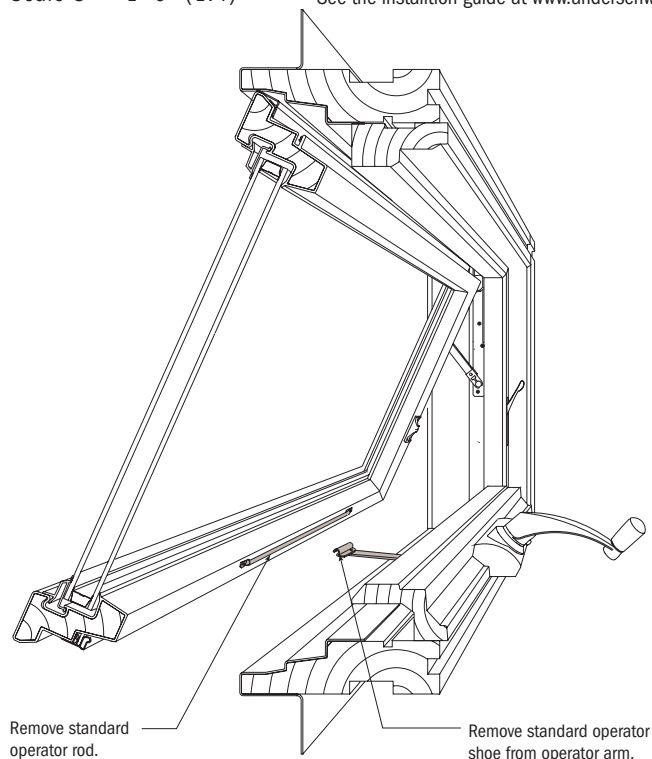
Options / Accessories

Extension Arm Pack

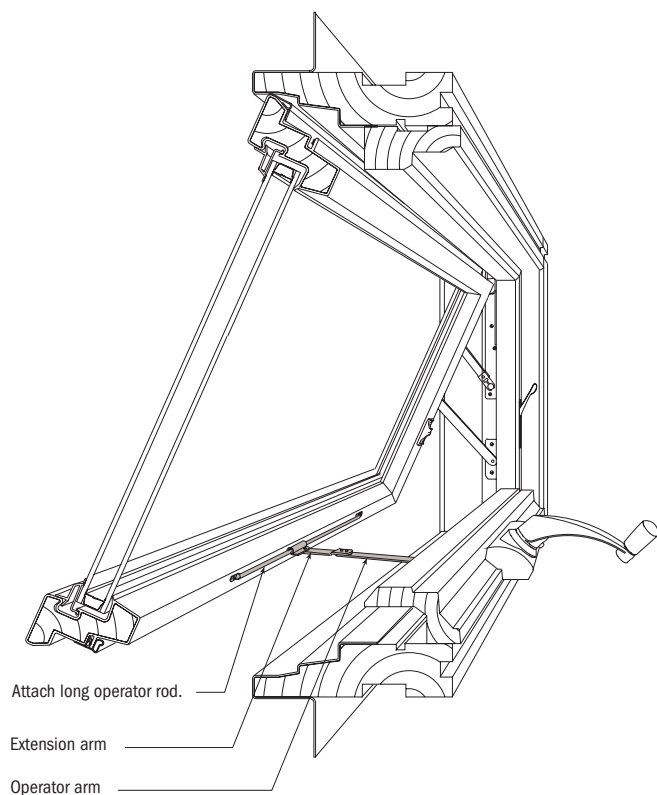
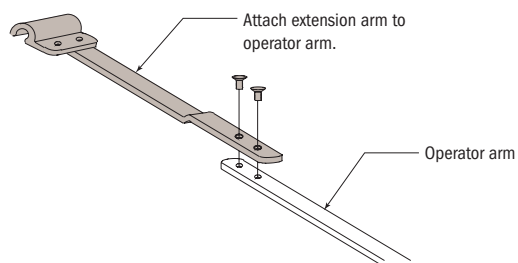
Scale 3" = 1'-0" (1:4)

For venting awning windows A3 and wider. Adds approximately 3-3/4" to opening depth.

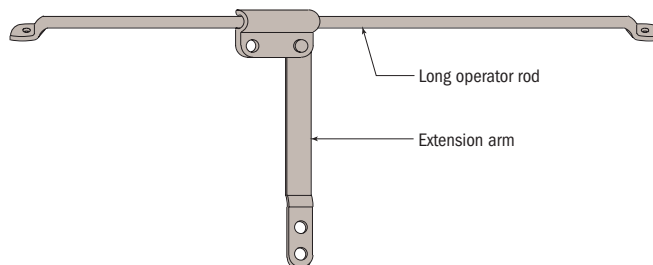
See the installation guide at www.andersenwindows.com for installation details.



Standard Operator



Operator with Extension Arm



Options / Accessories

Awning Vent Limiter - 2001 to present

Scale: None

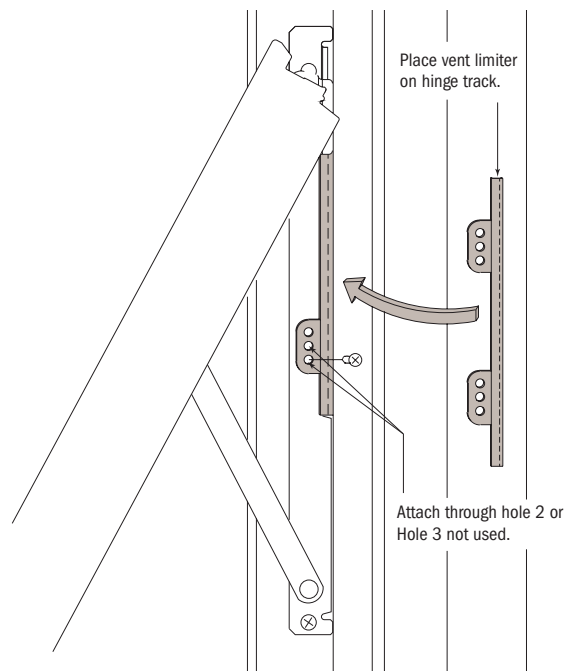
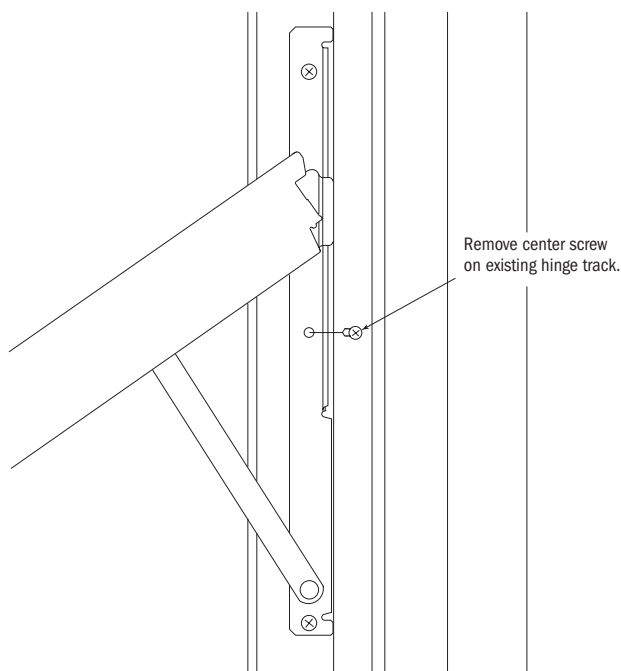
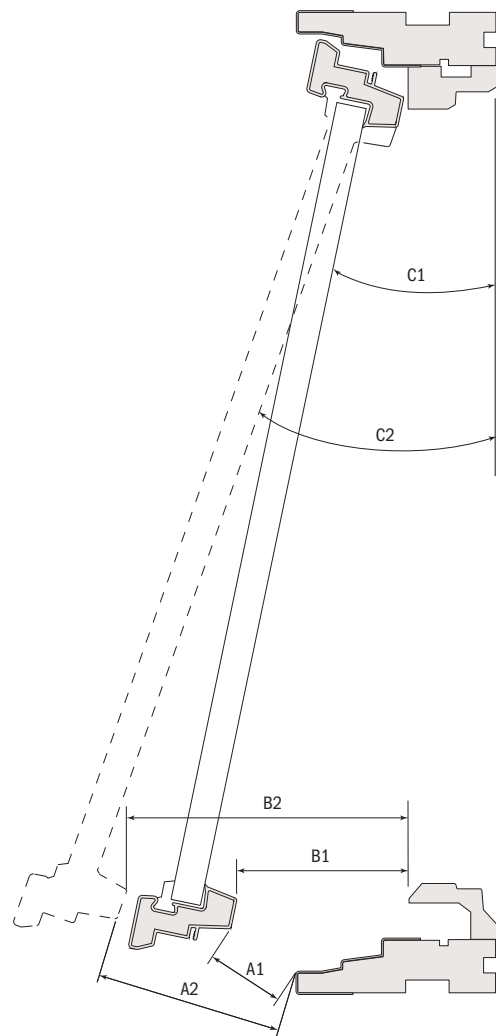
Split arm vent limiters are available for awning window sizes excluding A335, A3535, AP32V, AP352V and AP42V units. They have two position settings, indicated in the detail below.

WARNING

Do not install on windows intended for use as emergency exits. Device will hinder escape or rescue in an emergency.

	Position A		Position B		Position C	
Unit Size	A1	A2	B1	B2	C1	C2
AR heights	1-7/16"	3-3/8"	3-5/16"	5-5/16"	13.56°	22.07°
AN heights	2-3/16"	4-11/16"	4-1/8"	6-5/8"	13.56°	22.07°
A heights	3"		4-15/16"		13.56°	
AW heights	4"		5-15/16"		13.56°	
AX heights	4-15/16"		6-7/8"		13.56°	
AXW heights	5-3/4"		7-3/4"		13.56°	

See complete instruction guide at www.andersenwindows.com



Options / Accessories

Vent Control Adaptor - 1978 to 2001

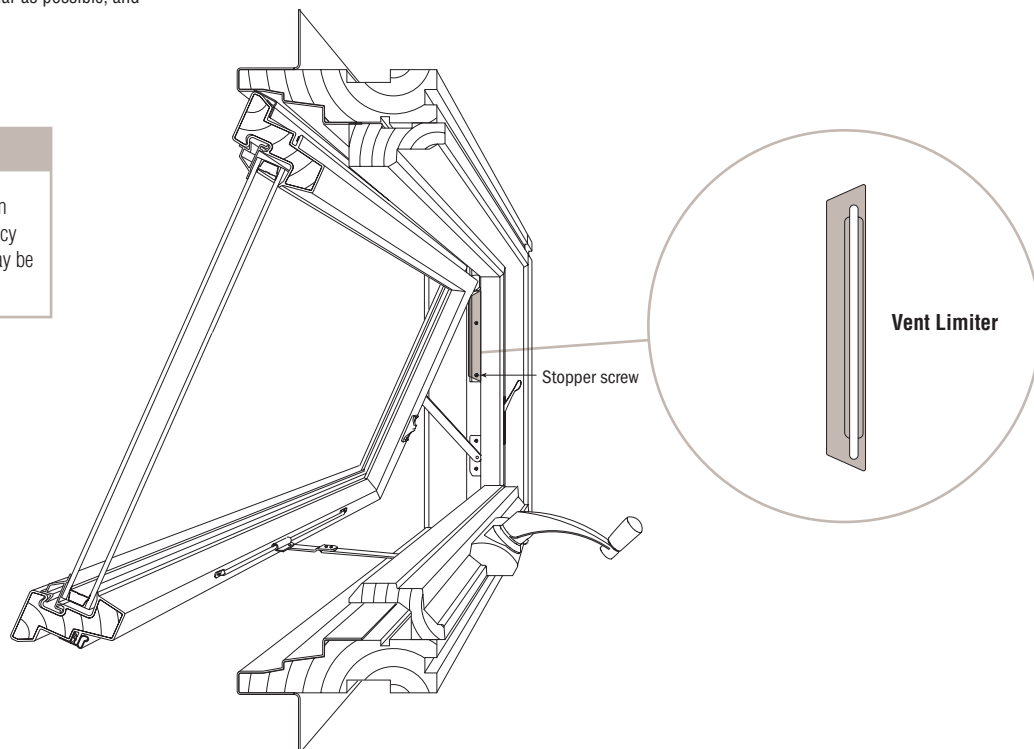
Scale 3" = 1'-0" (1:4)

For installation on both jambs. (Use to reduce opening depth—adjustable.)

1. Remove the stopper screw that is located at the end of the hinge channel.
2. Install the vent control adaptor into the channel. Align the slot in the adaptor to the stopper screw hole.
3. Apply the stopper screw.
4. Close the window to the desired maximum opening, slide the vent control adaptor up as far as possible, and tighten the stopper screw.

⚠ WARNING

DO NOT use limited vent hardware on windows intended for use as emergency exits. Emergency escape or rescue may be hindered.

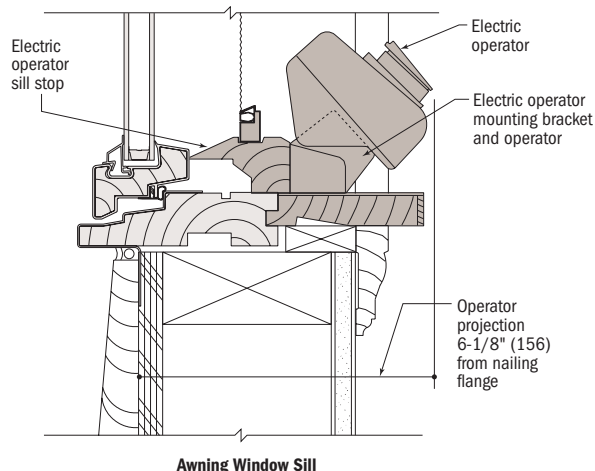


Options / Accessories

Operators

Electric Window Opener

For out-of-reach installations, the electric opener provides convenient power operation.



Vertical Section



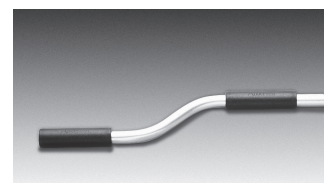
Hex socket adaptor with flexible extension pole tip.

Hex Socket Adaptor

For out-of-reach installations when using an extension pole. It replaces the operator handle. Each vent operator extension pole (shown above) includes one hex socket adaptor.

Flexible Extension Pole Tip

The flexible extension pole tip is used on the venting extension pole for steep pitched installations.

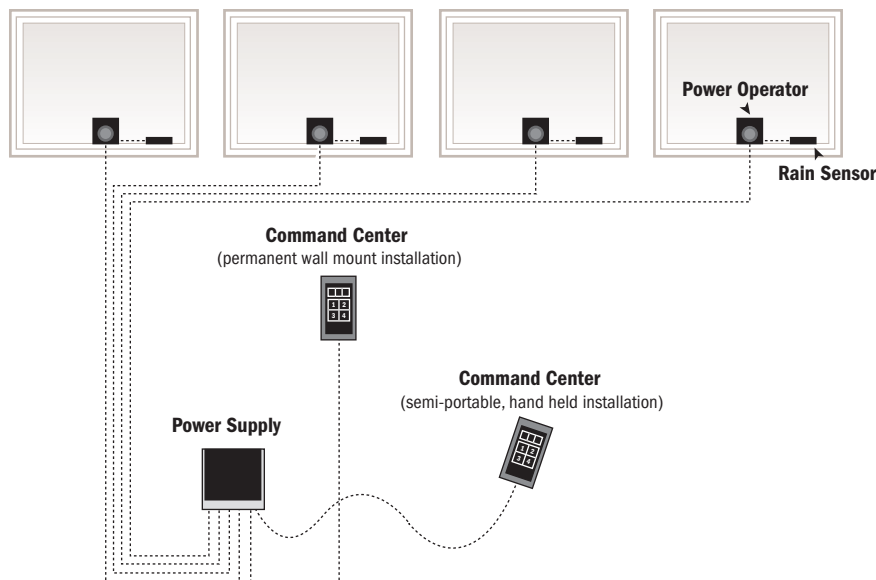


Operator Offset Extension Pole

For out-of-reach installations, this extension pole easily controls the vent operator and shade. Pole adjusts from 6' to 10' in length. Each vent operator extension pole includes one hex socket adaptor.

Typical Electric Opener System Installation

See the installation guide at www.andersenwindows.com for installation details.



Installation Accessories

Up to four window sash can be operated from one command center. 10 or 20 ft. extension cords are available for use with either the command center or the power operator (power operator and command center come with 10' cord).

Operation of Multiple Units

For power operation with multiple units, purchase 1 electric window opener set for first window and 1 power operator set for each additional sash. Power operators can be added for up to three additional sash for each window opener set.

Parts for the electric window opener for include:

Single-Unit Electric Window Opener Set

- 1 power supply (converts 110 AC to DC)
- 1 command center with 10' cord (controls 4 operators maximum)
- 1 power operator (DC motor) with bracket and 10' cord
- 1 rain sensor
- 1 insect screen safety connector
- 1 roof window mounting bracket
- 1 Perma-Shield® awning mounting bracket
- All mounting screws and instructions

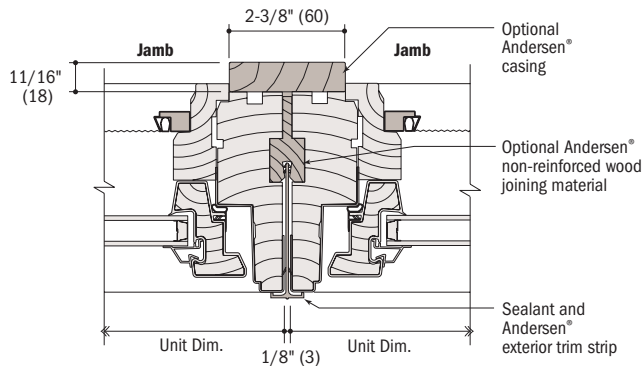
Power Operator Set

- 1 power operator with mounting bracket and 10' cord
- 1 rain sensor
- 1 insect screen safety connector
- 1 roof window mounting bracket
- 1 Perma-Shield® awning mounting bracket
- All mounting screws and instructions

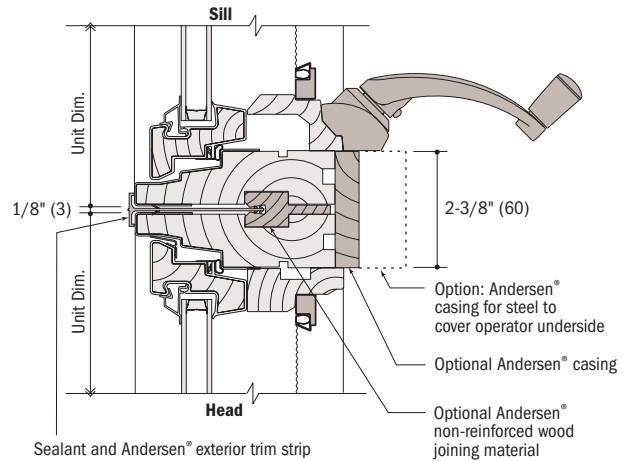
Joining Details—Andersen® Narrow Joining Materials

Andersen® Non-Reinforced Joining

Scale 3" = 1'-0" (1:4)



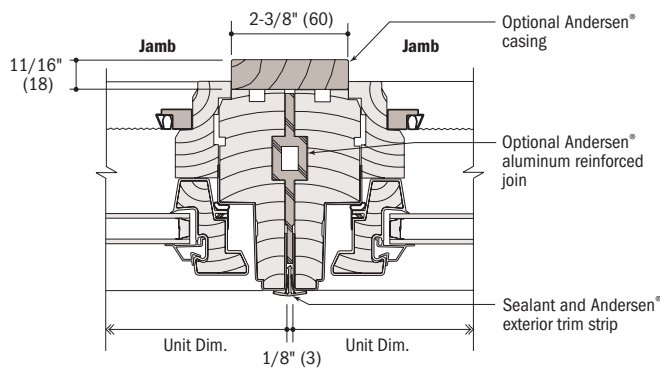
Horizontal Section



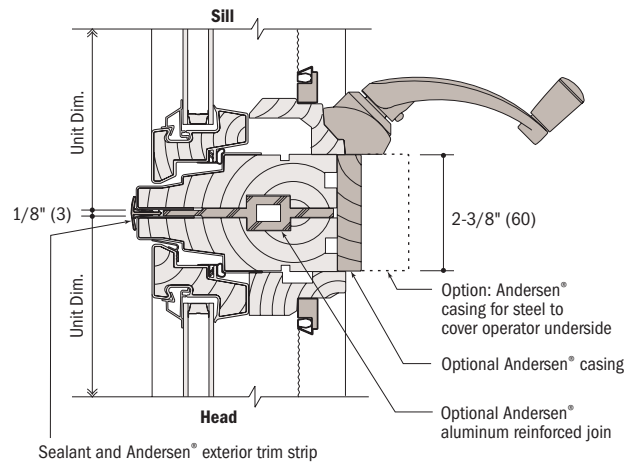
Vertical Section

Andersen® Aluminum Reinforced Joining

Scale 3" = 1'-0" (1:4)



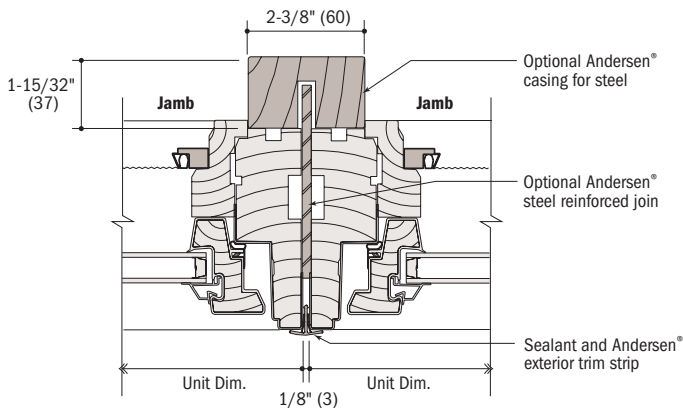
Horizontal Section



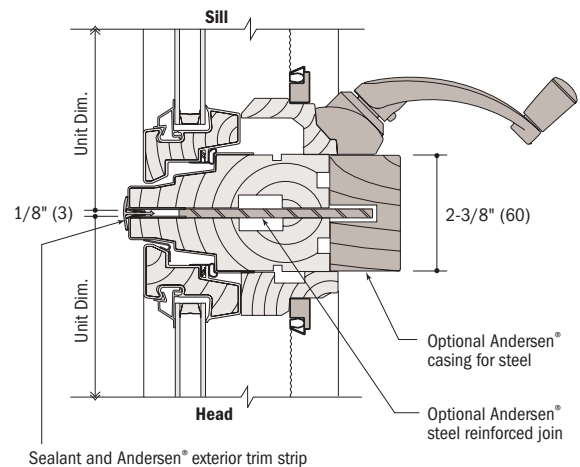
Vertical Section

Andersen® Steel Reinforced Joining

Scale 3" = 1'-0" (1:4)



Horizontal Section

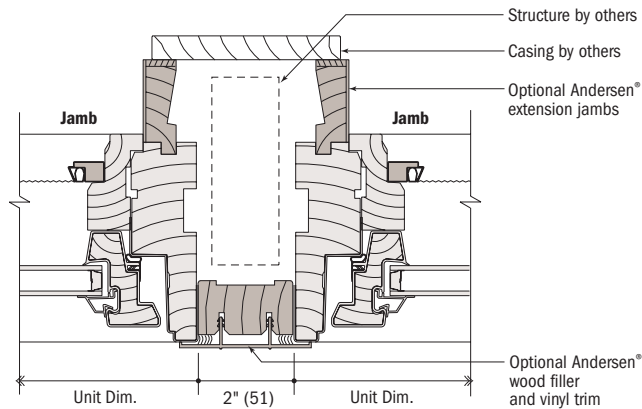


Vertical Section

Joining Details

Support Mullion

Scale 3" = 1'-0" (1:4)



Horizontal Section

Joining Compatibility

Many Andersen® units are designed to be joined with other Andersen units in a variety of non-reinforced and reinforced combinations. Other combination types and joining methods can be viewed in the Andersen® Product Guide, in Andersen Window Studio® software, and by visiting andersenwindows.com. Combination designs should always be checked for design pressure performance requirements to ensure the appropriate joining method is specified.

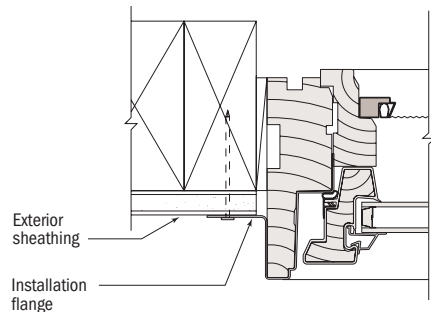
NOTE: Reinforced component details are typical examples for large window combinations that require additional support for windload (lateral load) purposes. Determination of the reinforcing member(s) required for a specific job and appropriate selection of Andersen® products which conform to all applicable laws, ordinances, building codes, and safety requirements is the sole responsibility of the architect, building owner and/or contractor. Check with your local building code officials for specific requirements and with your local Andersen supplier for general information. Andersen strongly recommends consultation with an architect or structural engineer to determine appropriate support and reinforcement. Andersen is not responsible for conditions in, or performance of, adjacent wall or roof construction beyond the perimeter of the Andersen unit, nor the fastening system used.

Anchoring Methods

Installation Flange

Scale 3" = 1'-0" (1:4)

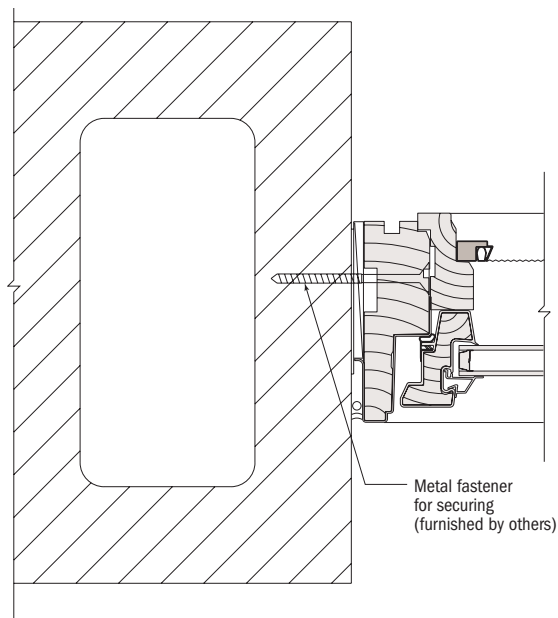
Awning window is secured in the opening by using fasteners through the installation flange.



Threaded Masonry Fastener / Expansion Sleeve

Scale 3" = 1'-0" (1:4)

To secure a casement window unit in an opening, remove the sash stops and pre-drill through the side jambs for fastener installation.



Jamb Clip

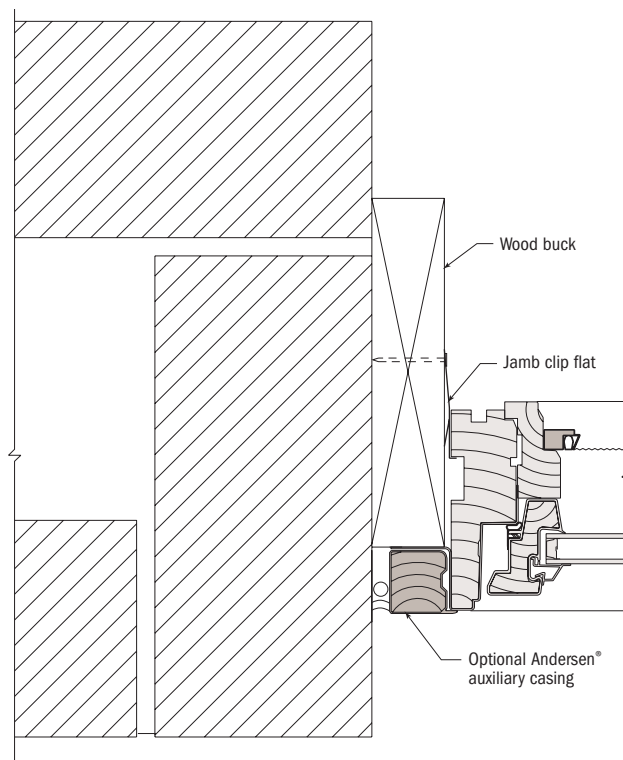
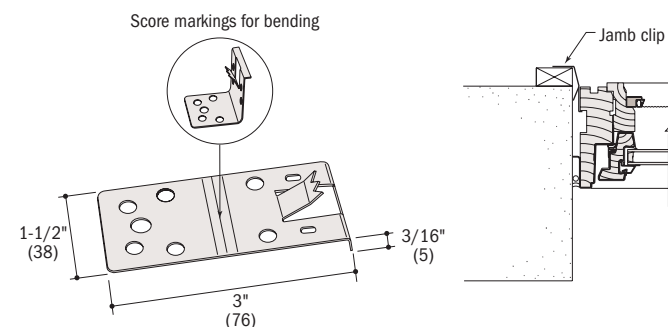
Scale 3" = 1'-0" (1:4)

Awning window unit secured in opening by others using Andersen® 302 stainless steel sheet metal jamb clips and stainless steel screws. Bend the jamb clips to secure unit fit in opening. Installation flange can be cut as required to accommodate the jamb clips.



APPLICATION:

- First secure jamb clip to back side of window unit jamb(s)
- Apply 12" apart on center starting 6" from corners of head jamb, sill and side jambs
- Jamb clip lateral design load capacity: maximum 200 lb.



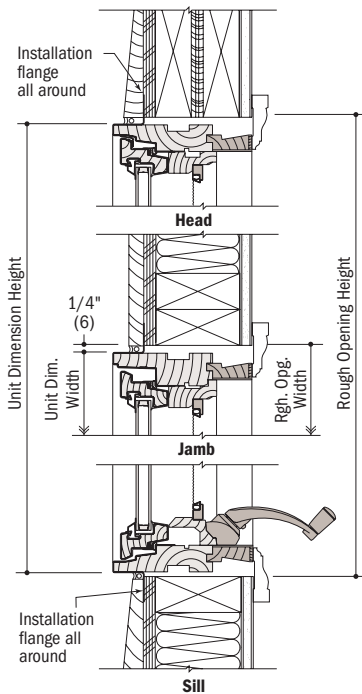
CAUTION

Make sure that the unit frame parts do not become bowed when using anchoring methods. Unit will not operate properly if frame parts are stressed.

Suggested Product Applications

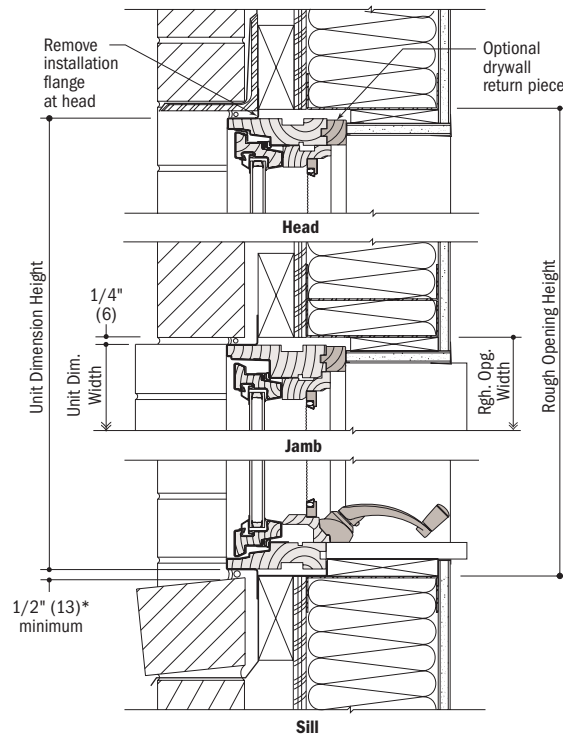
Wall Types

Scale 1-1/2" = 1'-0" (1:8)



Vertical Section

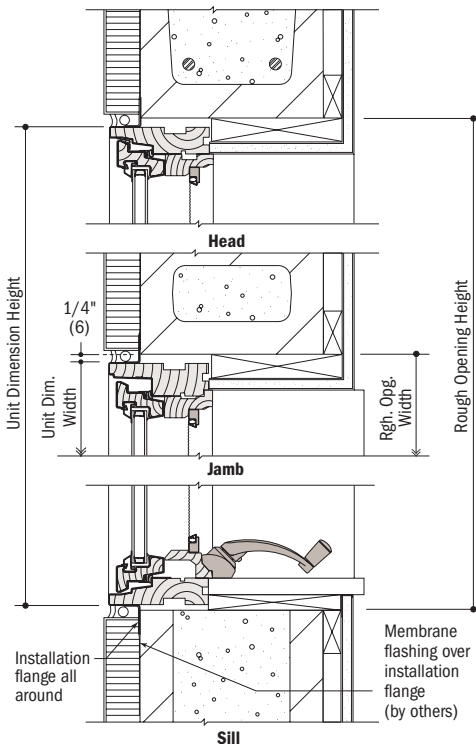
Wood Siding / 2 x 4 Wood Stud Framing



*1/2" (13) minimum to accommodate differential shrinkage/expansion when brick is used with wood framing.

Vertical Section

Brick Veneer / 2 x 6" Metal Stud Framing



Vertical Section

E.I.F.S. / Concrete Masonry Unit (CMU)

Importance of Proper Installation

Proper installation and maintenance of Andersen® products are essential if optimum performance is to be fully attained. Written installation instructions which provide guidelines for proper installation are available for Andersen products from your local Andersen supplier or by writing to: Andersen Windows, Inc., Box 12, Bayport, MN 55003 or by visiting our website at www.andersenwindows.com. Remember that every installation is different. Andersen strongly recommends consultation with an Andersen product representative and with an experienced contractor, architect, or structural engineer prior to the installation of any Andersen product. Installation of Andersen products, including method of attachment, fastener selection, and code compliance is the sole responsibility of the architect, building owner, contractor, and/or consumer.

Construction by Others

Andersen Corporation is not responsible for the design of, conditions in, or performance of, adjacent wall or roof construction beyond the perimeter of the Andersen units. Proper integration of the Andersen units with the weather-repellent system of the building is the responsibility of others.

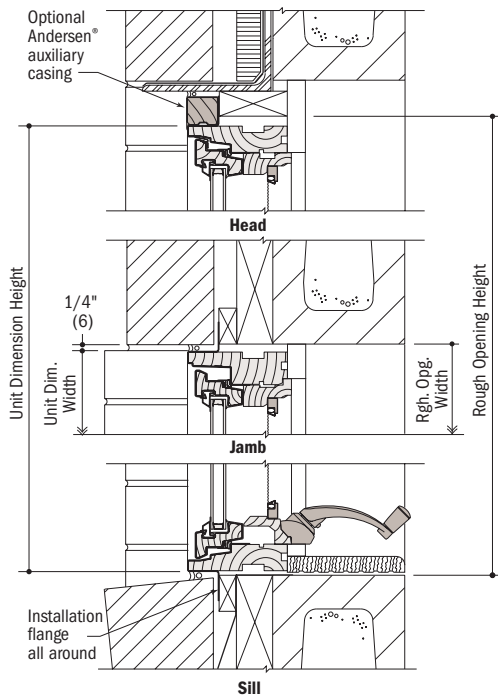
NOTE: Where E.I.F.S. wall finish is adjacent to window units, contact E.I.F.S. manufacturer for installation instructions, including the use of appropriate flashing, the proper use of sealant and backer rod, and the proper width of sealant joint around the perimeter of the window.

NOTE: Leave adequate clearance between sill and masonry for caulking and dimensional change of framework. Installation flange may be removed where construction sequence/ detailing requires no flange.

Suggested Product Applications

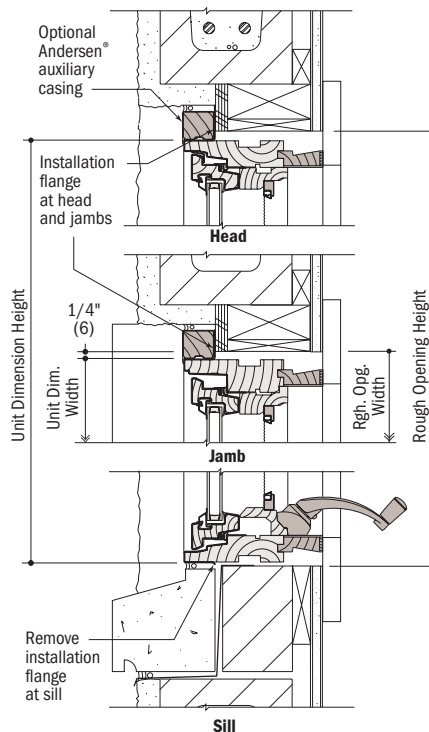
Wall Types

Scale 1-1/2" = 1'-0" (1:8)



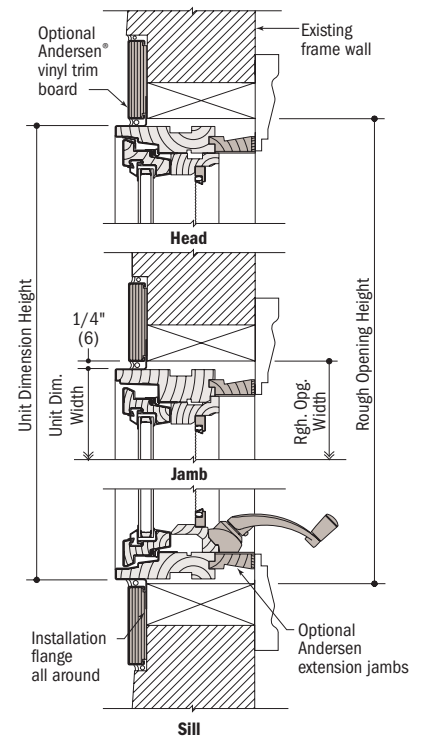
Vertical Section

Brick / Concrete Masonry Unit (CMU)



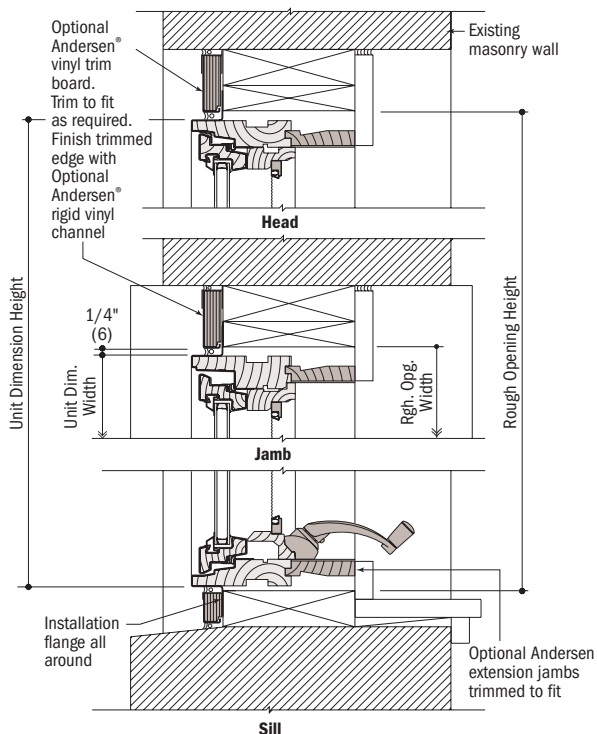
Vertical Section

Stucco / Concrete Masonry Unit (CMU) Inset Window



Vertical Section

Existing Stud Wall



Vertical Section

Existing Masonry Wall

Importance of Proper Installation

Proper installation and maintenance of Andersen® products are essential if optimum performance is to be fully attained. Written installation instructions which provide guidelines for proper installation are available for Andersen products from your local Andersen supplier or by writing to: Andersen Windows, Inc., Box 12, Bayport, MN 55003 or by visiting our website at www.andersenwindows.com. Remember that every installation is different. Andersen strongly recommends consultation with an Andersen product representative and with an experienced contractor, architect, or structural engineer prior to the installation of any Andersen product. Installation of Andersen products, including method of attachment, fastener selection, and code compliance is the sole responsibility of the architect, building owner, contractor, and/or consumer.

Construction by Others

Andersen Corporation is not responsible for the design of, conditions in, or performance of, adjacent wall or roof construction beyond the perimeter of the Andersen units. Proper integration of the Andersen units with the weather-repellent system of the building is the responsibility of others.

NOTE: Where E.I.F.S. wall finish is adjacent to window units, contact E.I.F.S. manufacturer for installation instructions, including the use of appropriate flashing, the proper use of sealant and backer rod, and the proper width of sealant joint around the perimeter of the window.

NOTE: Leave adequate clearance between sill and masonry for caulking and dimensional change of framework. Installation flange may be removed where construction sequence/ detailing requires no flange.